

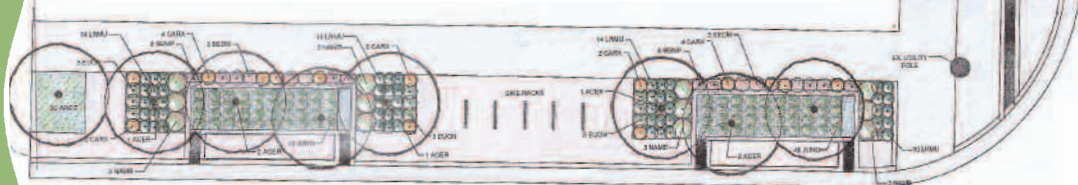
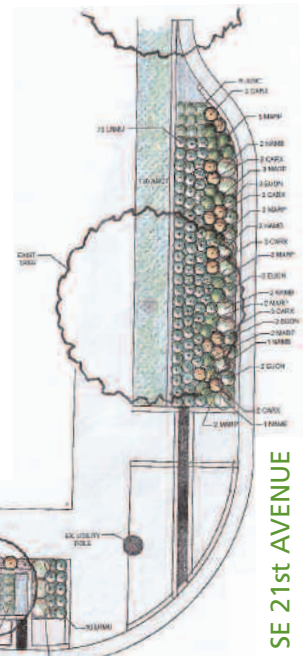
# Sustainable Stormwater Management Green Street

## SE Tibbetts Street and 21st Avenue

working for  
clean rivers,  
healthy  
watersheds,  
and a livable,  
sustainable  
community

**S**ustainable stormwater management integrates stormwater into building and site development. Disconnecting the flow from the storm sewer system and directing runoff to more natural systems reduces the amount of runoff by allowing water to soak into the ground, and filters pollutants before stormwater reaches our rivers and streams.

The City of Portland, in cooperation with People's Food Co-Op and HAND (Hosford-Abernethy Neighborhood Development), has developed an innovative green street project that meets, for the first time, the objectives of managing stormwater in a sustainable manner and enhancing neighborhood safety through pedestrian improvements. Through its unique design and use of native plantings and street trees, this project reduces the amount of stormwater and pollutants flowing into the Willamette River and enhances neighborhood safety and livability by increasing pedestrian visibility and improving street crossing opportunities.



### TIBBETTS STREET

The project includes a vegetated curb extension along SE 21st in front of People's Food Co-Op, and a chain of stormwater planters along Tibbetts. The work includes converting two to three street parking spaces on SE 21st to bicycle parking, and removing two trees on SE Tibbetts. The City will plant eight approved street trees to replace the trees that are removed.

### PROJECT PLANTINGS

TREES	Coral Bark Maple
SHRUBS	Dwarf Nandina New Zealand Sedge Dwarf Euonymus
GROUNDCOVERS	Kinnikinnick Creeping Mahonia Purple Hens and Chicks Stonecrop
BASIN PLANTS	Grooved Rush Lilac Beauty Lilyturf



ENVIRONMENTAL SERVICES  
CITY OF PORTLAND  
working for clean rivers

Sam Adams, Commissioner  
Dean Marriott, Director

### ***Green Streets***

Southeast 21st and Tibbetts are served by an underground pipe system that collects stormwater from the street and residential driveways. When it rains, stormwater flows into this pipe system carrying sediment and other pollutants into the Willamette River.

A green street is a curb extension or infiltration planter that slows and filters stormwater runoff through vegetation and allows some to soak into the ground. Green street projects show how the City can redesign residential streets to manage stormwater effectively, stop sewer backups into basements, reduce combined sewer overflows (CSOs), and improve neighborhood aesthetics.

### ***Examples of Other Green Streets***



New Season's Stormwater Planters



SE Siskiyou curb extension

### ***For More Information***

If you have questions or comments, please call Rhett Drennan at 503-823-6006, or email [rhettad@bes.ci.portland.or.us](mailto:rhettad@bes.ci.portland.or.us). More information about Environmental Services stormwater management programs is available at [www.portlandonline.com/bes](http://www.portlandonline.com/bes).