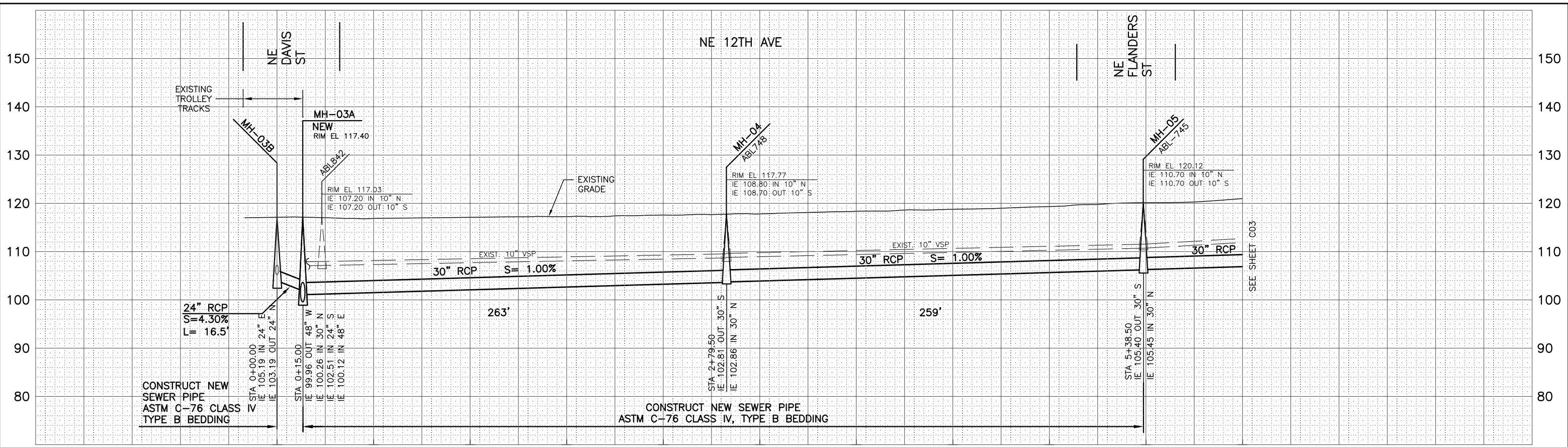
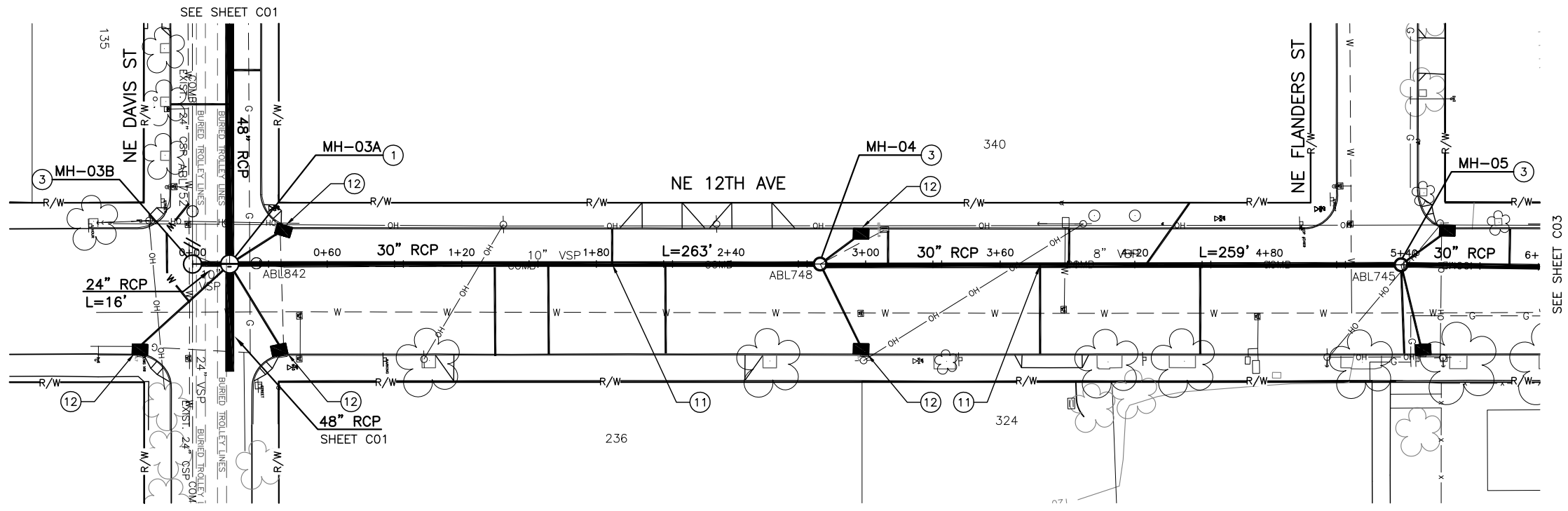


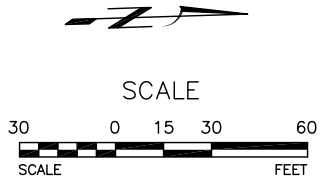
D:\CAD_PROJECTS\EOXXXX_OAK_BASIN\DWG\EOXXXX_C02.DWG 6/4/2013 2:32:16 PM JOHND



PROFILE: HORIZ: 1"=30'
VERT: 1"=10'



- CONSTRUCTION NOTES:**
- ① CONSTRUCT 96" MANHOLE PER STD. DRAWINGS P-150, P-151 & P-152.
 - ③ CONSTRUCT 60" MANHOLE PER STD. DRAWINGS P-150, P-151 & P-152.
 - ⑪ RECONSTRUCT ALL EXISTING ACTIVE SERVICE LATERALS BETWEEN NEW MAINLINE SEWER AND CURB.
 - ⑫ RECONSTRUCT INLET AND 10" INLET LEAD, STANDARD DRAWING RD364, TYPE G-1.



XREF(S) USED: EOXXXX_XBAS, EOXXXX_XDSN, EOXXXX_XSUR		DESIGNED BY	DATE APPD.
ROTATION ANGLE: DVIEW TW = 271.80 DEGREES		DRAWN BY	PROGRAM MGR.
CONSTRUCTED BY		CHECKED BY	CONST. MGR.
PROJECT COMPLETED		DESIGN MGR.	
MAP CORRECTED BY			
CHECKED BY			
DRAWING NAME: EOXXXX_C02.DWG			
NO.	DATE	DESCRIPTION	APPD.
REVISION			

CITY OF PORTLAND
ENVIRONMENTAL SERVICES



**OAK BASIN
RELIEF AND RECONSTRUCTION**
PLAN AND PROFILE

1/4 SECTION
3031
JOB NO.
EOXXXX
SHEET NO.
C02
4 OF 13

3_SAMPLE_PLAN_PROF-FULL-GRID.PDF