

working for clean rivers

CLARIFIER

MAY
2015

A NEWSLETTER FOR THE EMPLOYEES OF ENVIRONMENTAL SERVICES



A Message from Jim Hagerman

Commissioner Fish has named three finalists for Director of the Bureau of Environmental Services. The job opening attracted more than 40 applicants. A selection committee interviewed five candidates on April 28. The Commissioner chose three finalists from that group and interviewed the three on April 29. The three finalists are:

PAUL GRIBBON, the former BES Chief Engineer on the Willamette River CSO Tunnels project. Paul went to work for S.A. Healy in 2011 after working at Environmental Services for 20 years. Before heading up the tunnel project, Paul managed the BES Capital Improvement Program.

MICHAEL JORDAN, the former manager of the Oregon Department of Administrative Services. He has also worked as Metro's Chief Operating Officer and Canby City Administrator. Jordan has also served as a Canby City Councilor and Clackamas County Commissioner.

PAUL SLYMAN, Metro's Parks and Environmental Services Director. He is a past manager of the Portland Development Commission Sustainable Services Division and an Oregon Department of Environmental Quality Deputy Director.

Commissioner Fish hopes to name a finalist later this month.

A handwritten signature in black ink, appearing to be 'JH', written in a cursive style.

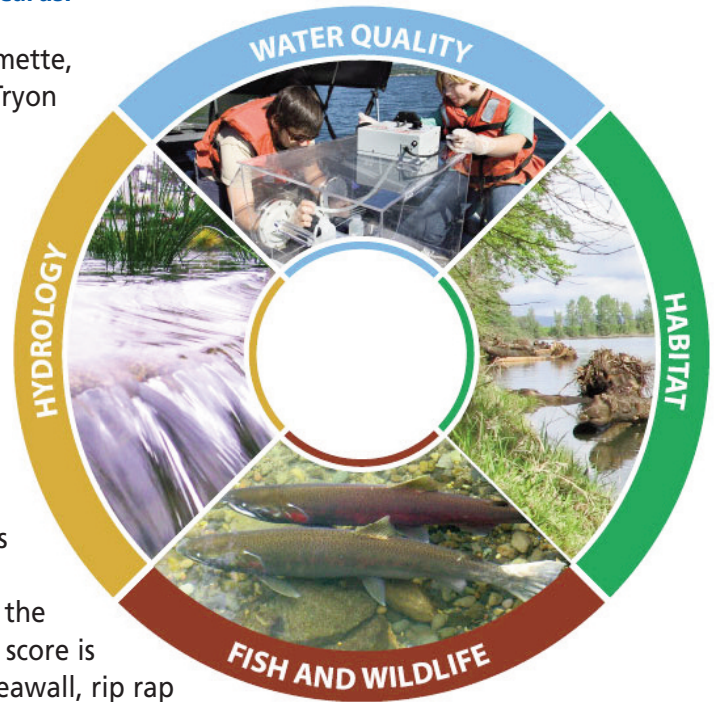
How healthy are Portland's watersheds?

Environmental Services staff went to City Council on Earth Day to announce a first of its kind system for grading and tracking watershed health in Portland. On May 1, the Portland Watershed Report Cards went live online at www.portlandoregon.gov/bes/ReportCards.

The city tracks conditions in the Willamette, Willamette Tributaries, Fanno Creek, Tryon Creek, Columbia Slough and Johnson Creek watersheds. The monitoring focuses on water quality in rivers and streams, how water flows over land and in streams, how well habitat supports fish and wildlife, and the diversity and health of the city's fish, birds and other wildlife.

The Willamette watershed, for example, gets a B for water quality. *E. coli* bacteria and many pollutant levels are low in the river, but high water temperature and mercury levels bring the grade down. The Willamette's habitat score is C- mainly because of the downtown seawall, rip rap on river banks, and development up to the river's edge.

Portland's watersheds will never return to pristine, pre-development conditions. Reversing the negative impacts of 150 years of urban development is a long process and some watershed conditions get low grades. But they would likely be much worse without the investments Portland has made to protect the city's natural resources.



Crystal Springs Restoration Award

The American Planning Association (APA) has recognized the restoration of Crystal Springs Creek in Westmoreland Park with its **2015 Excellence in Sustainability Award**. The APA sustainability award recognizes the work the city, its many community partners and other agencies are doing to bring nature into neighborhoods, restore salmon habitat in the city and improve our parks.

Portland Parks & Recreation, Environmental Services, the U.S. Army Corps of Engineers, Metro and many other partners finished work last fall to restore Crystal Springs Creek in the park and improve access to trails and the creek. The park's restored duck pond has a more natural stream channel with pools and riffles to improve fish habitat. Native trees and shrubs planted on the bank shade and cool the water and provide wildlife habitat.

The project included adding a boardwalk and overlooks, seating, paths, lighting, and picnic areas. Parks also renovated the play area as part of its Nature-Based Play Initiative to create settings in developed parks that encourage creative play and interaction with natural features.

Pump Station Update

Construction on the SW 86th Avenue Pump Station is on schedule to be completed by the end of the year. The new facility at the end of SW 86th Avenue near the Fanno Pump Station will increase pumping capacity to ensure that the system can handle wastewater flows during large rain storms. The 86th Avenue pump station will operate year-round and the existing Fanno pump station will operate only during wet weather.



Construction photo from February 2015

The contractor has completed constructing the electrical, compressor, and mechanical buildings. Surge tanks are installed, and the wet well and pumping facility are all in. Crews are working on the diversion structure and installing conduit for the pump station and its buildings.

The Regional Arts and Culture Council formed a selection committee with representatives of local artists, the Garden Home neighborhood, trail advocates, and Tualatin Hills Park & Recreation District to select artists to design and install public art for the project. The selected local artists are David Boekelheide and Christina Conant.

The artists will meet with the public tomorrow on the Fanno Creek trail at SW 84th Avenue to discuss their concept at the proposed location on the trail next to the construction project. Portland's Percent for Art program will provide funds for the art installation.

Sherman County Biosolids Contract Extended

Environmental Services expanded its biosolids land application program in 2010 to include acreage near Wasco in Sherman County. The Portland City Council recently extended the Sherman County land application contract for five more years.

In 1990, the bureau began applying biosolids to agricultural land at Madison Farms in Umatilla County near Echo. Most of Portland's biosolids still go to Umatilla County but the bureau trucks more than 25,000 wet tons, or about one-third of our biosolids production, to Sherman County each year. The Sherman County sites are about 80 miles closer to Portland than the Umatilla County site.

That reduces travel distance and saves our ratepayers money. The trucks that haul biosolids travel about 54,000 fewer miles per year and have reduced diesel fuel consumption by about 17,000 gallons annually. That represents a reduction in carbon dioxide emissions of 200 tons a year. The Sherman County contract saves the biosolids program about \$280,000 a year, or \$1.3-million over five years.

Portland Building Changes

Portland Chief Administrative Officer Fred Miller has recommended that the city completely replace and renovate the interior of the Portland Building. The project would include replacing all electrical, plumbing and mechanical systems at an estimated cost of \$175 million. The remodeling project will retain the building's exterior. Portland Building staff would be relocated during the renovation work.



City's chief administrative officer recommends renovating the interior of the Portland Building.

The city has studied options since 2013 to make the Portland Building more earthquake resilient and stop water from leaking into the building. The major remodel would be less expensive than demolishing and replacing the building. If the City Council supports the recommendation, the renovated Portland Building could re-open for business in 2019.

You can read the details in the documents "The Portland Building Systems and Interior Assessment" and "The Portland Building Systems and Interior Assessment Appendix" on the [Bureau of Internal Business Services website](#).

BLT Road Show

This month, members of the BES Bureau Leadership Team will hold their regular weekly meeting at three BES workplaces followed by employee question and answer sessions. Employees are free to observe the meeting and encouraged to take part in the conversation afterward.

This a time of transition for the bureau and BLT members want to answer employee questions and hear concerns, comments and suggestions. If you can't make it to the meeting closest to your workplace, please feel free to attend one of the others.

Tuesday, May 5

10:00 a.m. – Noon

Water Pollution Control Lab, Smith and Bybee Rooms

Tuesday, May 12

10:00 a.m. – Noon

Columbia Boulevard Wastewater Treatment Plant

Mt. Mazama Room, Columbia Building

Tuesday, May 19

3:00 p.m. – 5:00 p.m.

Portland Building, 2nd floor auditorium

Value Award Time

Three BES Value Award presentations are scheduled this month. Please plan to attend an event and support your co-workers. You can find more Value Award information at www.portlandoregon.gov/bes/ValueAwards.

Tuesday, May 19

9:30 a.m. – 10:30 a.m.

Portland Building, 2nd Floor Auditorium

Tuesday, May 26, 1:00 p.m.

Columbia Boulevard

Wastewater Treatment Plant

Columbia Building, Mt. Mazama Room

Tuesday, May 26, 2:00 p.m.

Water Pollution Control Laboratory

Smith and Bybee Lakes Room



New Stars



The Environmental Services Recognition Committee circulates Shining Star Awards throughout the bureau. Employees give them to co-workers to recognize outstanding achievement and notable performance on the job. Recipients display the Shining Star on their desk for two months, then pass it on.

The Shining Star acknowledges achievements and good work that might otherwise go unnoticed in a bureau as large as BES. When it's time to pass on your Shining Star, consider employees in all groups, as well as your own work team or group.

Here is a list of new Shining Stars.

Ray Lions	Shining Star # 1	to Tim Knighton
Joe Hoffman	Shining Star # 2	to Albert Tabino
Valerie Joachim	Shining Star # 3	to Amber Clayton
Baron Howe	Shining Star # 4	to Charles Garver
Matt Krueger	Shining Star # 5	to Amy Chomowicz
Rosa Lehman	Shining Star # 6	to Jessica Rojas
Michael Hauser	Shining Star # 7	to Mark Walla
Sue Terzo	Shining Star # 8	to Bryan Davis

[Read more about Shining Stars](#) on the BES intranet .



Wellness Tip

Recent studies confirm the benefit of eating nuts such as almonds, hazelnuts, pistachios and walnuts. The research shows that those who ate more than ¼ ounce of tree-grown nuts daily weighed less, had lower blood pressure and higher HDL (good) cholesterol. They also consumed less sugar, saturated fats and sodium. Researchers also found that eating nuts reduces the risk of heart disease and diabetes.



Contact your PEERs

PEERs are specially trained Environmental Services staff volunteers who are available to offer bureau employees support, guidance and referral. [Click here to learn more](#) or to contact a PEER volunteer.

Being Prepared! Home Evacuation Plans

Don't wait until an earthquake strikes or the fire alarm sounds to think about an evacuation plan. Here are some things to keep in mind in planning one at home.

Know the escape routes from your home, including more obscure ones, like out that ground-level window in your bathroom. If you have kids, draw them a map and post it near their door.

Plan where the family will regroup if you have to evacuate your house. Pick one location right outside your home, and one outside the neighborhood, in case you need to leave the area. Decide ahead of time where you would go in case of an evacuation. It could be a friend's or relative's house, or a Red Cross shelter.



ENVIRONMENTAL SERVICES
CITY OF PORTLAND
working for clean rivers



Our Mission

Environmental Services serves the Portland community by protecting public health, water quality and the environment.

We provide sewage and stormwater collection and treatment services to accommodate Portland's current and future needs.

We protect the quality of surface and ground waters and conduct activities that plan and promote healthy ecosystems in our watersheds.

Our Vision

To be recognized as a trusted service provider and innovative environmental leader through a demonstrated commitment to clean rivers, healthy watersheds and our community.

Environmental Services: www.portlandoregon.gov/bes
Nick Fish, Commissioner James Hagerman, Interim Director

Produced electronically OD 2015