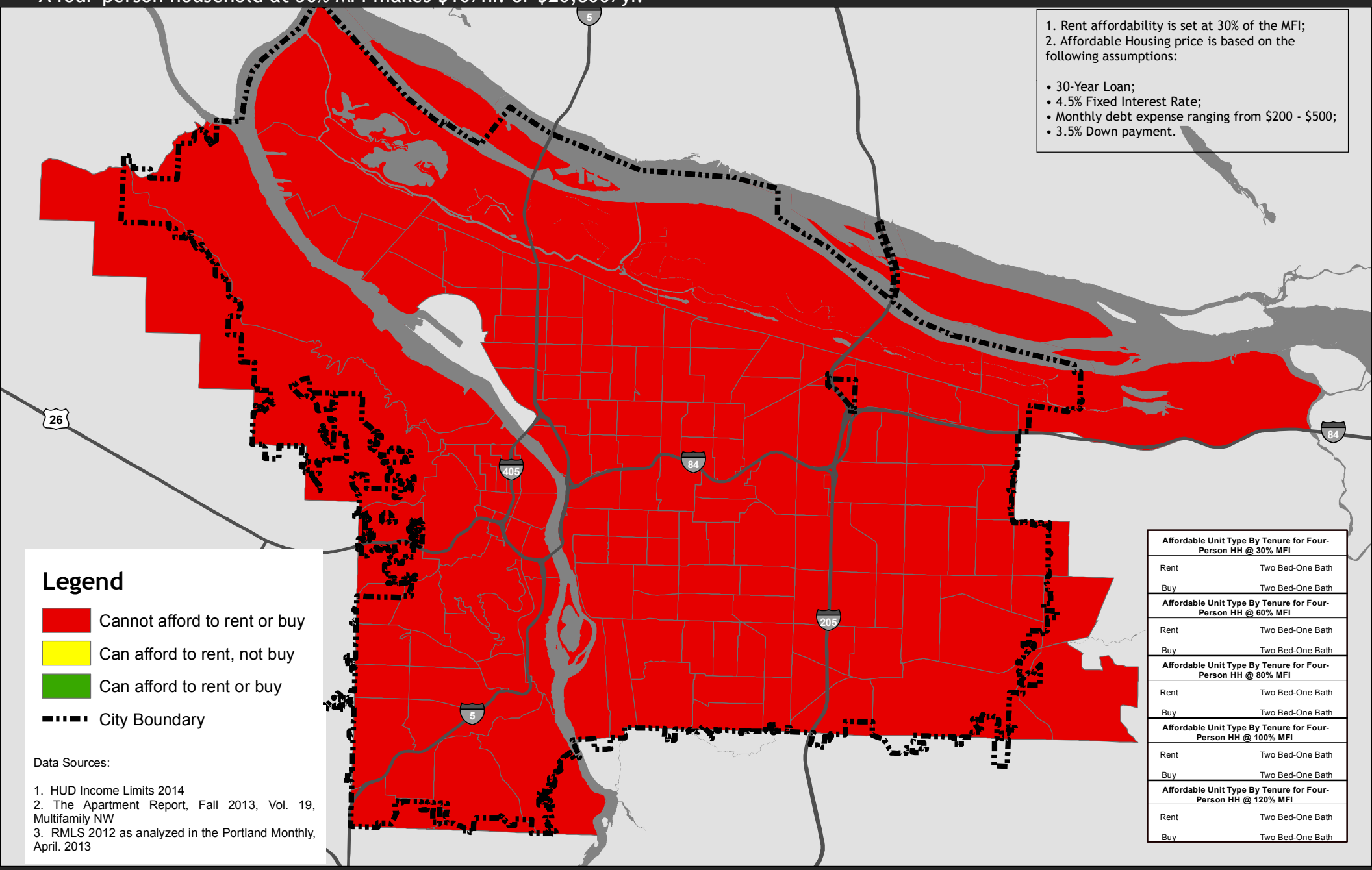


# Housing Affordability for a Four-Person Household at 30% Median Family Income (MFI)\*

\*A four-person household at 30% MFI makes \$10/hr. or \$20,800/yr.

1. Rent affordability is set at 30% of the MFI;  
 2. Affordable Housing price is based on the following assumptions:

- 30-Year Loan;
- 4.5% Fixed Interest Rate;
- Monthly debt expense ranging from \$200 - \$500;
- 3.5% Down payment.



## Legend

- Cannot afford to rent or buy
- Can afford to rent, not buy
- Can afford to rent or buy
- City Boundary

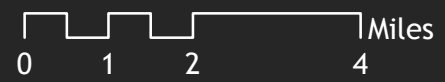
### Data Sources:

1. HUD Income Limits 2014
2. The Apartment Report, Fall 2013, Vol. 19, Multifamily NW
3. RMLS 2012 as analyzed in the Portland Monthly, April, 2013

Affordable Unit Type By Tenure for Four-Person HH @ 30% MFI	
Rent	Two Bed-One Bath
Buy	Two Bed-One Bath
Affordable Unit Type By Tenure for Four-Person HH @ 60% MFI	
Rent	Two Bed-One Bath
Buy	Two Bed-One Bath
Affordable Unit Type By Tenure for Four-Person HH @ 80% MFI	
Rent	Two Bed-One Bath
Buy	Two Bed-One Bath
Affordable Unit Type By Tenure for Four-Person HH @ 100% MFI	
Rent	Two Bed-One Bath
Buy	Two Bed-One Bath
Affordable Unit Type By Tenure for Four-Person HH @ 120% MFI	
Rent	Two Bed-One Bath
Buy	Two Bed-One Bath

February 28th, 2014

City of Portland | Oregon  
 Portland Housing Bureau



The information on this map was derived from City of Portland GIS databases. Care was taken in the creation of this map but it is provided "as is". The City of Portland cannot accept any responsibility for error, omissions or positional accuracy.