



# NW Cornelius Pass Rd. Project Update

Portland Freight Advisory Committee

November 1<sup>st</sup>, 2018

## Cornelius Pass Road Transfer

- HB2017 transfers Cornelius Pass Road between US26 and US30 from Washington and Multnomah Counties to ODOT
- Timing of transfer will be after completion of current project, no firm date yet
- ODOT is currently gathering information about the road
- Multnomah County in process of sharing available information



## Project Description

- Safety improvements are needed to Cornelius Pass Rd between Highway 30 and NW Kaiser Rd
- The Oregon Legislature allocated funding to Multnomah County for the enhancements
- Landslides on alternate routes delayed project





## Corridor-Wide Improvements

- Signage
- Vehicle pullouts
- Barriers and guardrails
- Reduce pavement drop-offs with gravel shoulder wedge

# NW CORNELIUS PASS ROAD // Project Details and Locations



- **8<sup>th</sup> Ave** minor curve realignment and shoulder widening

- **“S” curves** reconstruction and realignment

- **Curves south of Plainview Rd** signage and sight distance improvements

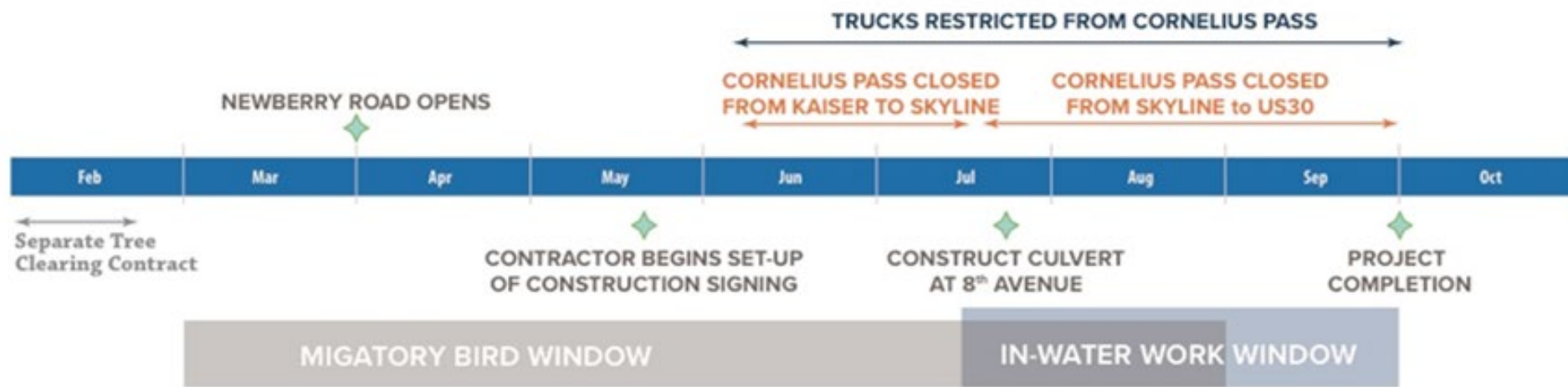
- **Kaiser Rd** signage, sight distance, and shoulder widening

- Reviewed many options with consultant:
  - In-water work:
    - 11-weeks (July 15-September 30) in water-work window.
    - Full closure required to do in one summer.
  - Flagging two-way traffic around one lane closure:
    - Traffic backups to Hwy. 26 and 30.
    - Large trucks may be banned due to narrow work zone.
  - One-way traffic:
    - Building culvert in 2 sections stretches schedule to 2 years and very costly.
    - Large trucks may be banned due to narrow work zone.
  - Full Closure:
    - Large trucks have long detours, but fastest schedule (4 months).
    - Cars and small trucks have nearby alternate routes.

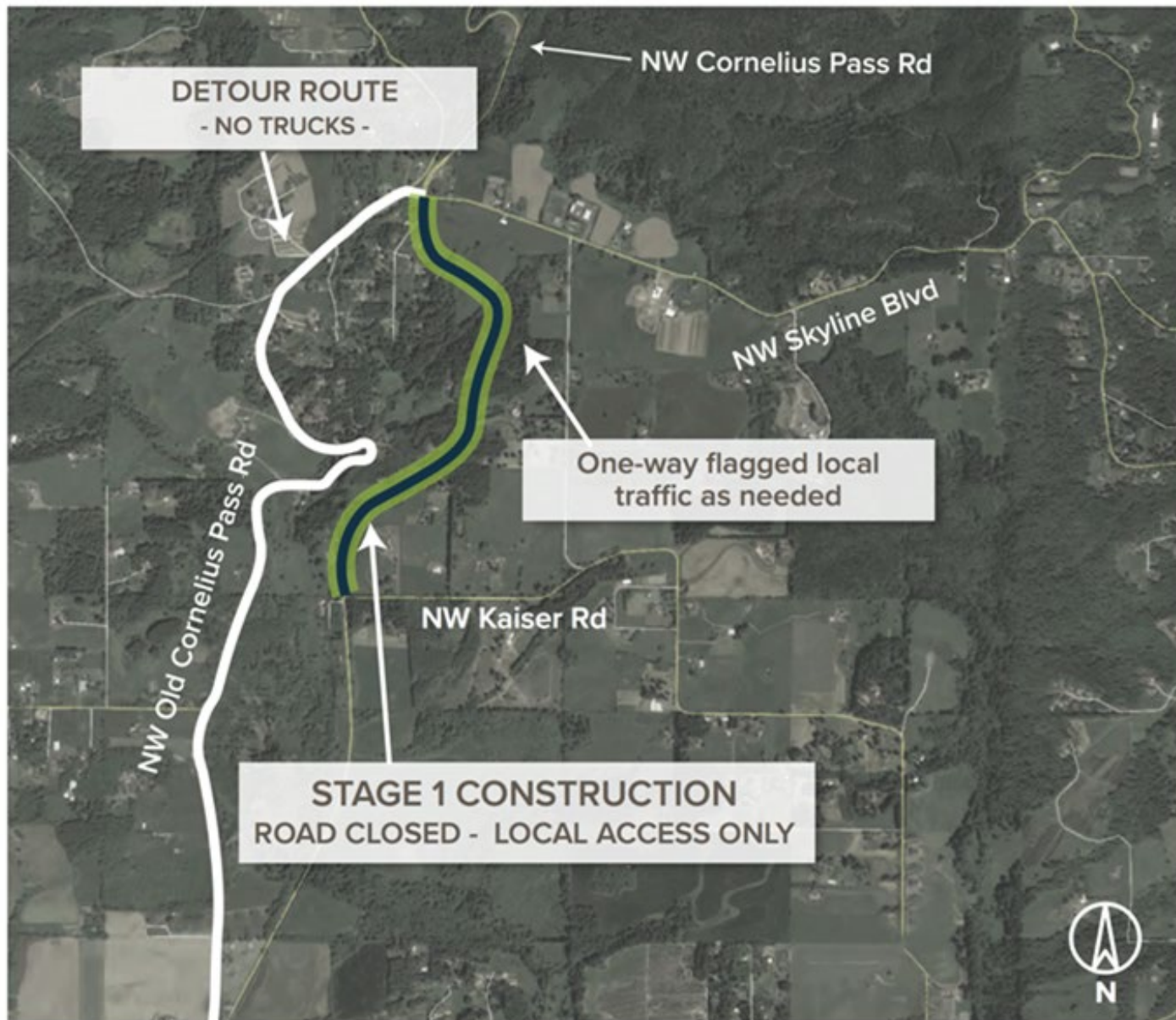




## NW CORNELIUS PASS ROAD CONSTRUCTION SCHEDULE

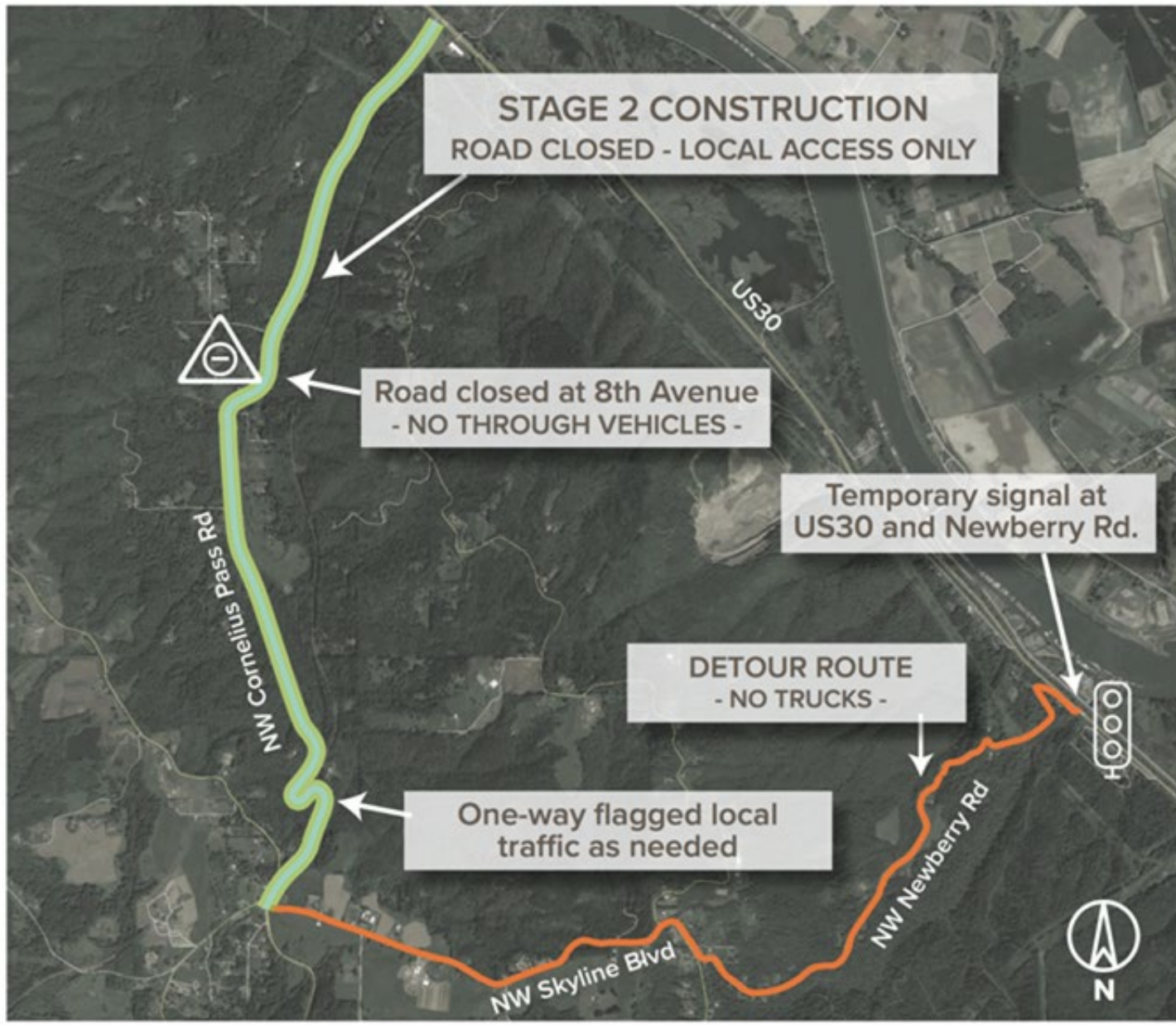


# NW CORNELIUS PASS ROAD // Stage 1 Traffic Plan



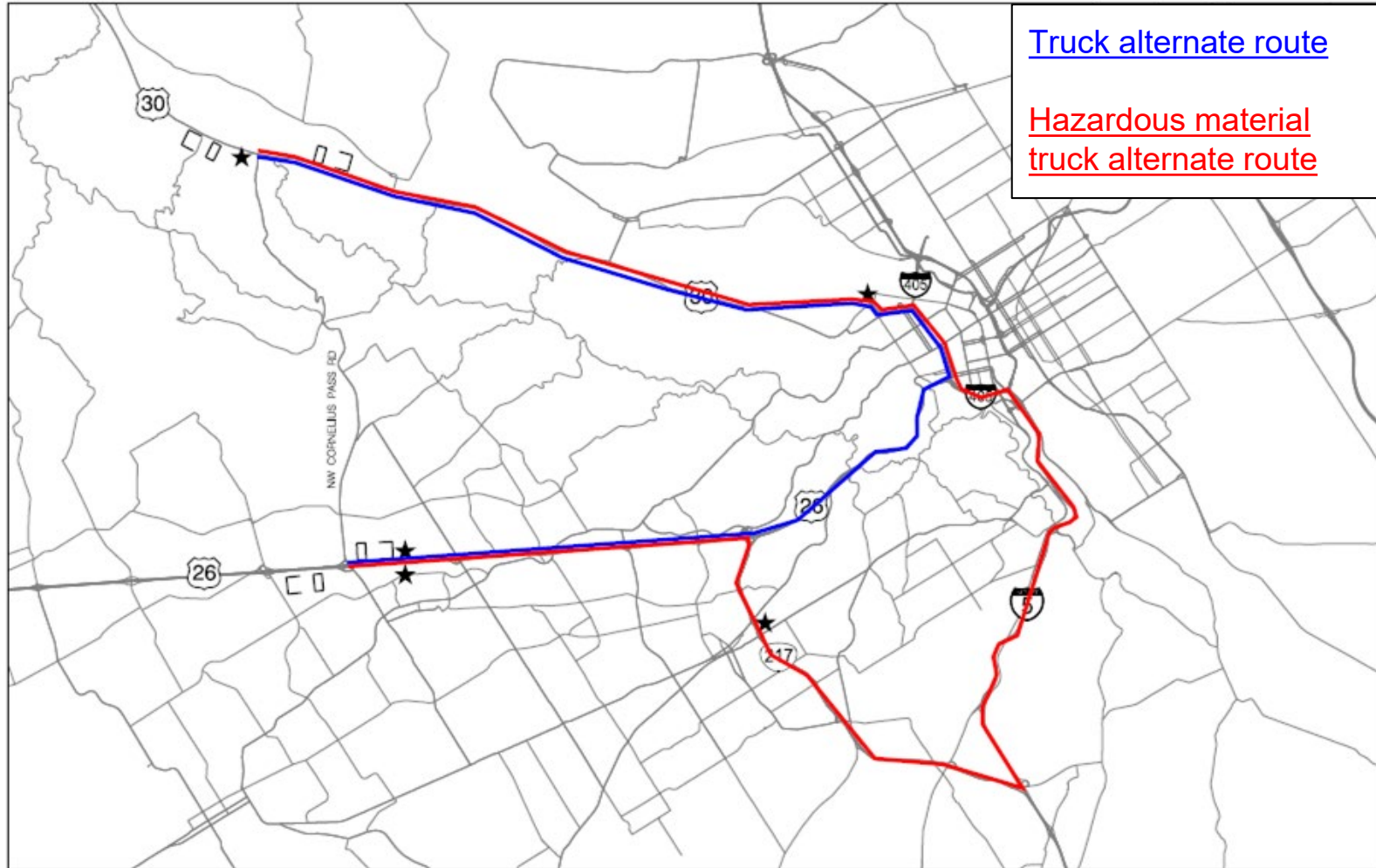


# NW CORNELIUS PASS ROAD // Stage 2 Traffic Plan



# NW CORNELIUS PASS ROAD // Freight Detour Route

TRUCK ALTERNATE ROUTE  
CORNELIUS PASS RD CLOSED TO ALL TRUCK TRAFFIC  
LIMITED DURATION





# NW CORNELIUS PASS ROAD // Safety



## Detour Plan

- Bicycle and Pedestrian Outreach: October 2018
- Outreach to freight: November 2018
- Coordination with Washington and Columbia Counties
- Pre-construction public meeting: Spring 2019
- Other issues/actions needed?

A stylized graphic on the left side of the slide. It features two dark green mountain peaks with rounded tops. Below the mountains is a dark green wavy band representing a valley or forest. At the bottom is a dark blue wavy band representing water. The graphic is composed of solid colors and simple shapes.

# NW Cornelius Pass Questions

**For more information:**

**Web:** [multco.us/cornpass](http://multco.us/cornpass)

**Twitter:** @MultCoRoads