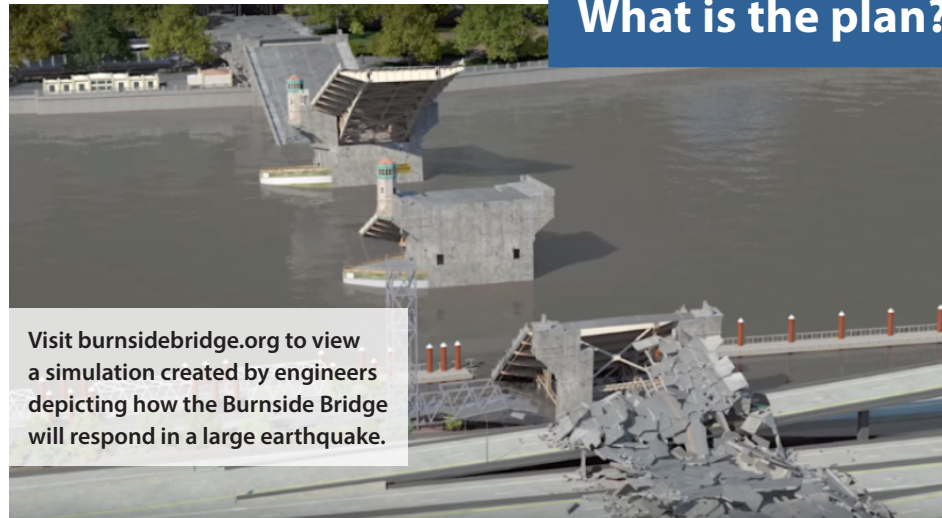


Portland’s aging downtown bridges are not expected to withstand a major earthquake.

Since 1926, the Burnside Bridge has served us well. To take us across the river for another 100 years, it needs an upgrade. Over the next several years, Multnomah County will evaluate options for creating a resilient Burnside crossing that will withstand a major earthquake.

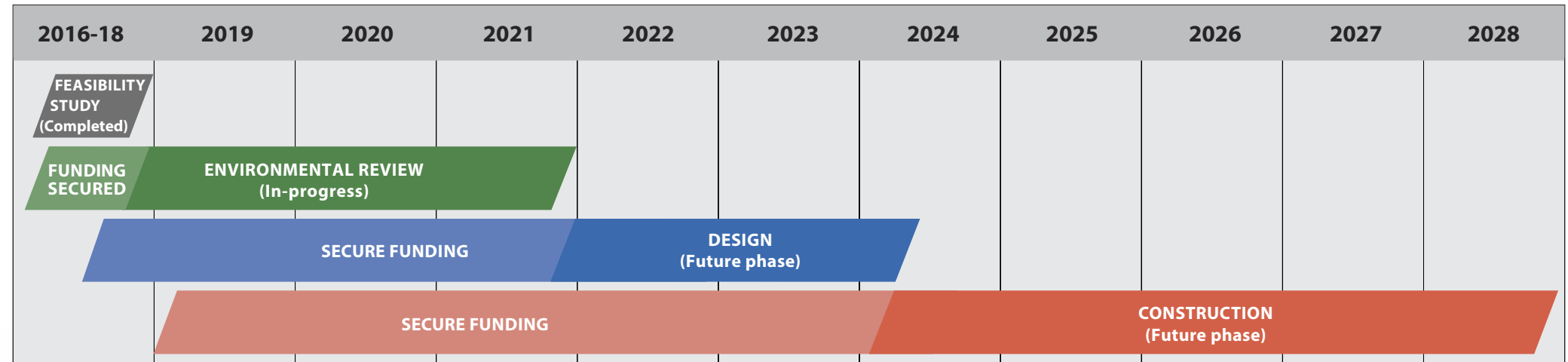
What is the plan?



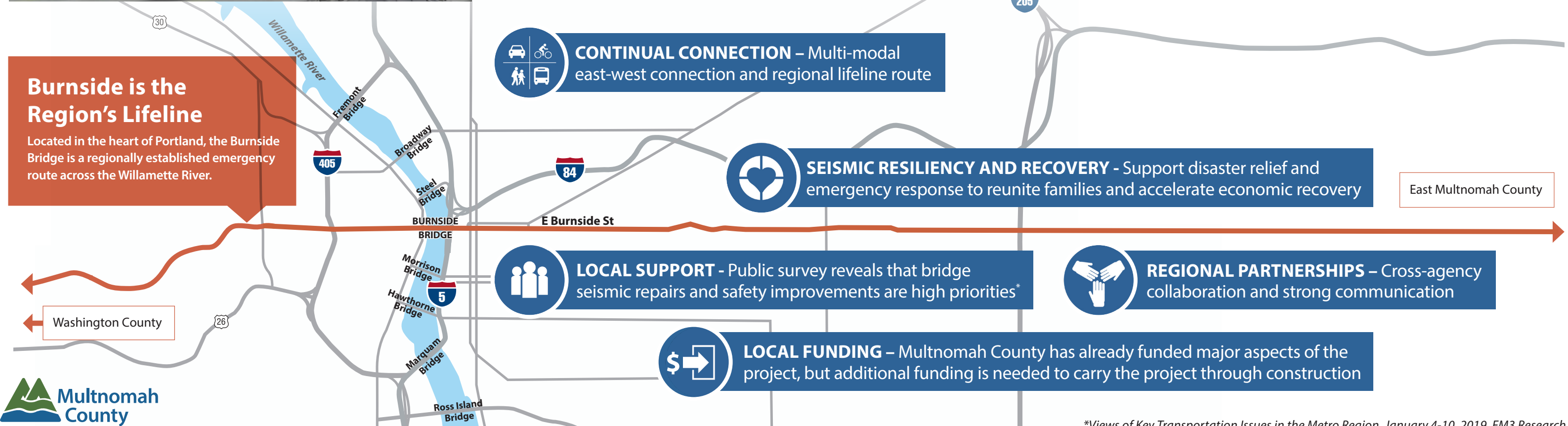
Visit burnsidebridge.org to view a simulation created by engineers depicting how the Burnside Bridge will respond in a large earthquake.

PROJECT TIMELINE

The project is now in the Environmental Review phase which includes preparing an Environmental Impact Statement (EIS). Your input is vital in helping us get to a preferred option to advance into Design and then into Construction.



Burnside is the Region’s Lifeline
 Located in the heart of Portland, the Burnside Bridge is a regionally established emergency route across the Willamette River.



CONTINUAL CONNECTION – Multi-modal east-west connection and regional lifeline route

SEISMIC RESILIENCY AND RECOVERY - Support disaster relief and emergency response to reunite families and accelerate economic recovery

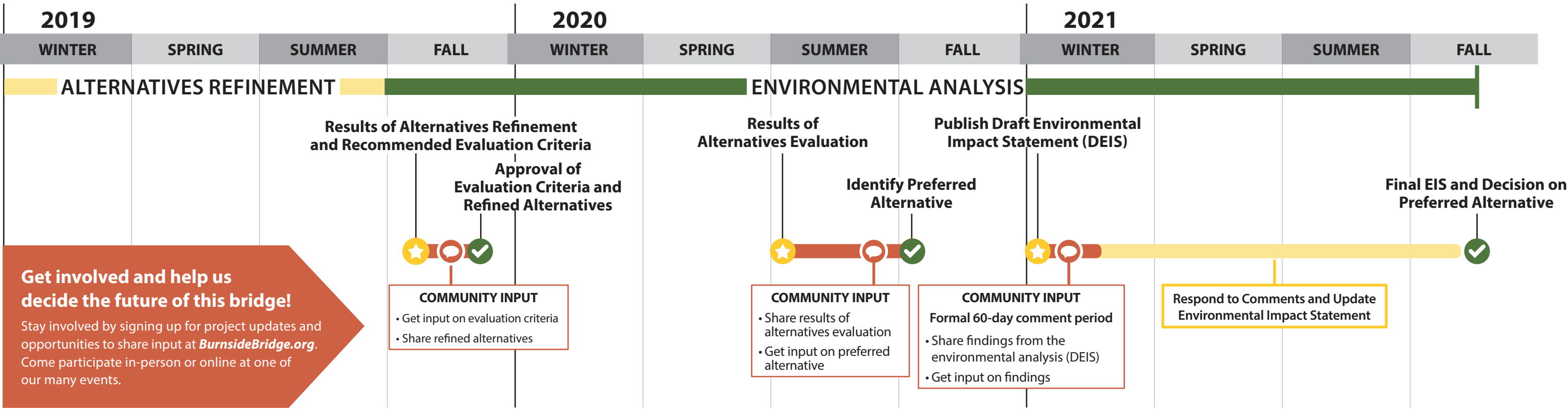
LOCAL SUPPORT - Public survey reveals that bridge seismic repairs and safety improvements are high priorities*

REGIONAL PARTNERSHIPS – Cross-agency collaboration and strong communication

LOCAL FUNDING – Multnomah County has already funded major aspects of the project, but additional funding is needed to carry the project through construction

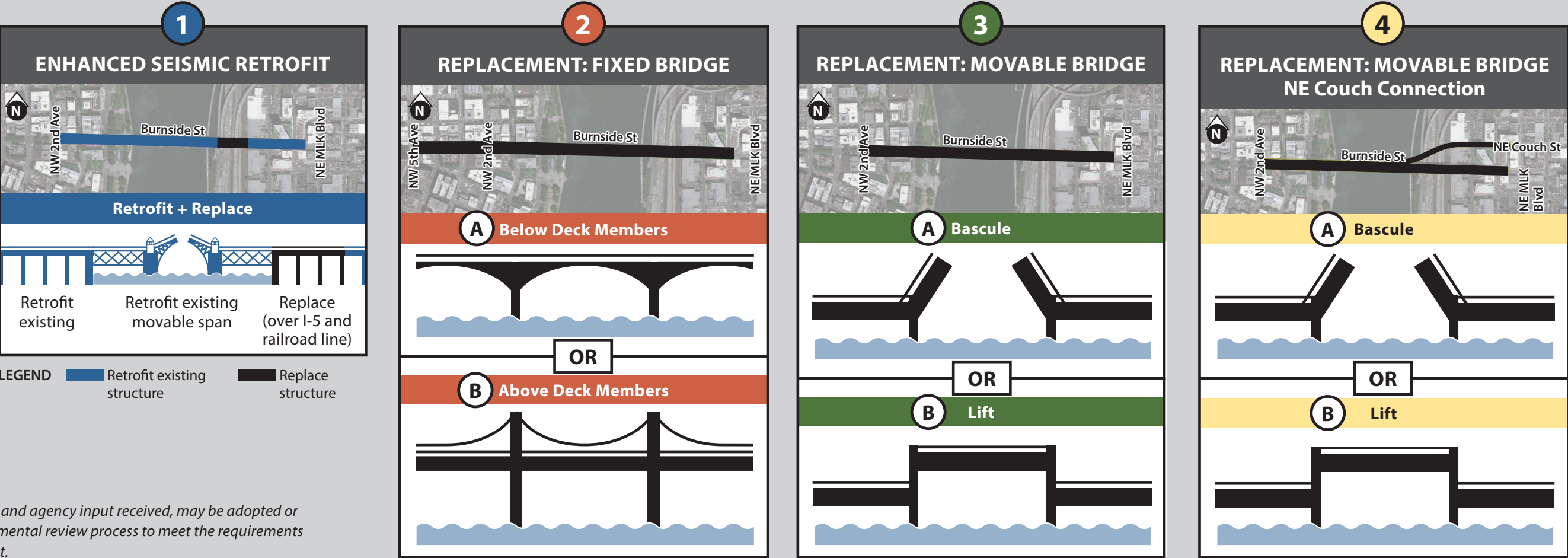
*Views of Key Transportation Issues in the Metro Region, January 4-10, 2019, FM3 Research

Environmental Review Process



Alternatives with options under evaluation

Four alternatives with multiple options are being studied further as part of the Environmental Review phase of the Earthquake Ready Burnside Bridge project, each with distinct characteristics to consider and evaluate. A no-build alternative will also be evaluated.



The information presented here, and the public and agency input received, may be adopted or incorporated by reference into a future environmental review process to meet the requirements of the federal National Environmental Policy Act.

Alternative illustrations are not to scale and are for bridge type illustration purposes only.

For information about this project in other languages, please call 503-209-4111 or email burnsidebridge@multco.us.
 Para obtener información sobre este proyecto en español, ruso u otros idiomas, llame al 503-209-4111 o envíe un correo electrónico a burnsidebridge@multco.us.
 Для получения информации об этом проекте на испанском, русском или других языках, свяжитесь с нами по телефону 503-209-4111 или по электронной почте: burnsidebridge@multco.us.

BurnsideBridge.org

[f](https://www.facebook.com/multcobridges) [i](https://www.instagram.com/multcobridges) [t](https://www.tiktok.com/@multcobridges) [y](https://www.youtube.com/multcobridges) @MultCoBridges, #ReadyBurnside

