



# Patio sliding doors make a graceful transition from your indoor to outdoor spaces.

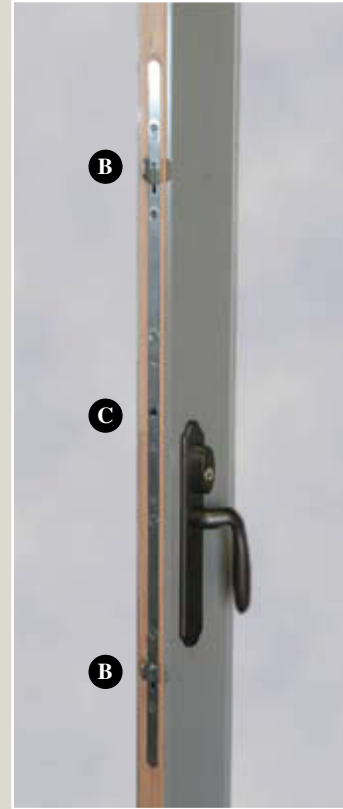
Sierra Pacific's sliding patio doors are the perfect solution for a space-saving opening to a deck, terrace or patio. Beautiful, yet functional - these doors are the perfect complement to any project.



## Our Patio Sliding Door Features a Pultruded Fiberglass Sill. The Benefits Include:

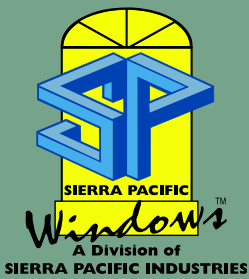
- Low thermal conductivity
- Impermeable to water
- Dimensional stability
- Material is chemically inert

- A** When door is closed, interlocker reduces air penetration and holds panels securely in place.
- B** Two point locking system offers optimum locking point contact with jamb to assure door passes the most stringent forced entry tests - comfort from security.
- C** Mishandling device prevents potential damage to the hardware, frame or panel.
- D** Revolutionary sill plug design protects bottom of door side jamb from moisture.



### Sliding Door Hardware Features:

- 300 Series Stainless Steel Gear Mechanism – very corrosion resistant
- Two Point Locking System – passes the most stringent CA forced entry test
- Manual Lock Operation – prevents inadvertent locking of the door
- Exceeds the current 100,000 Operational Cycle Testing Requirements



**Window Sales Locations**

**ARIZONA**

Phoenix - Service Center/Showroom  
 Scottsdale - Showroom  
 Tucson - Showroom

**CALIFORNIA**

Red Bluff - Manufacturing  
 Fremont - Service Center/Showroom  
 Irvine - Service Center/Showroom  
 Camarillo - Service Center/Showroom  
 Chico - Showroom  
 Fair Oaks - Showroom  
 Menlo Park - Showroom  
 Novato - Showroom  
 Redding - Showroom  
 San Diego - Showroom  
 Palm Desert - Showroom  
 Pacific Grove - Showroom

**COLORADO**

Broomfield - Service Center/Showroom  
 Denver - Showroom

**MONTANA**

Missoula - Service Center/Showroom  
 Big Sky - Showroom  
 Bozeman - Showroom  
 Columbia Falls - Showroom

**NEVADA**

Reno - Showroom

**NEW MEXICO**

Albuquerque - Service Center/Showroom  
 Santa Fe - Showroom  
 Taos - Showroom

**OREGON**

Beaverton - Showroom  
 Bend - Showroom  
 Eugene - Showroom

**UTAH**

Salt Lake City - Service Center/Showroom  
 Heber City - Showroom  
 Park City - Showroom

**WASHINGTON**

Lacey - Service Center/Showroom  
 Spokane - Service Center/Showroom  
 Kirkland - Showroom

**800.824.7744**

**Manufacturing Facility**  
**PO Box 8489**  
**Red Bluff, California 96080**  
**www.sierrapacificwindows.com**

10/07

**Sliding Door Trim**

- Solid brass forged handles and escutcheons
- Spring assist for easy locking
- Standard American cylinder is above the handle
- Available with thumb turn only or with thumb turn and exterior keylock
- Keylock has standard Schlage "C" keyway

Standard hardware

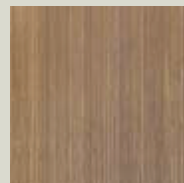


Optional hardware

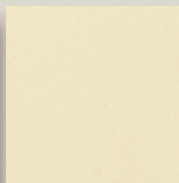


**Ten Standard Finish Options**

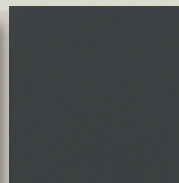
- Finishes to compliment any design
- 5 Resista® finishes available - indicated below with (R)
- Resista finish protects hardware from tarnishing under normal conditions



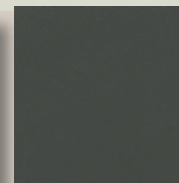
Antique Brass



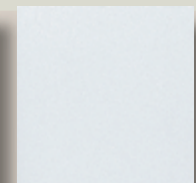
Polished Brass(R)



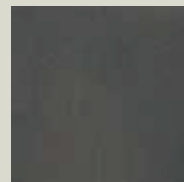
Matte Black



Rustic Umber



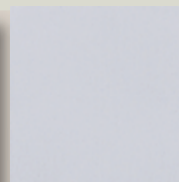
Polished Chrome(R)



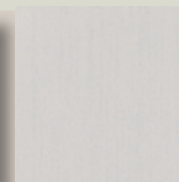
Oil Rubbed Brass



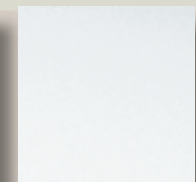
Antique Nickel(R)



Brushed Chrome(R)



Satin Nickel(R)



White

Colors may vary slightly from those shown.

