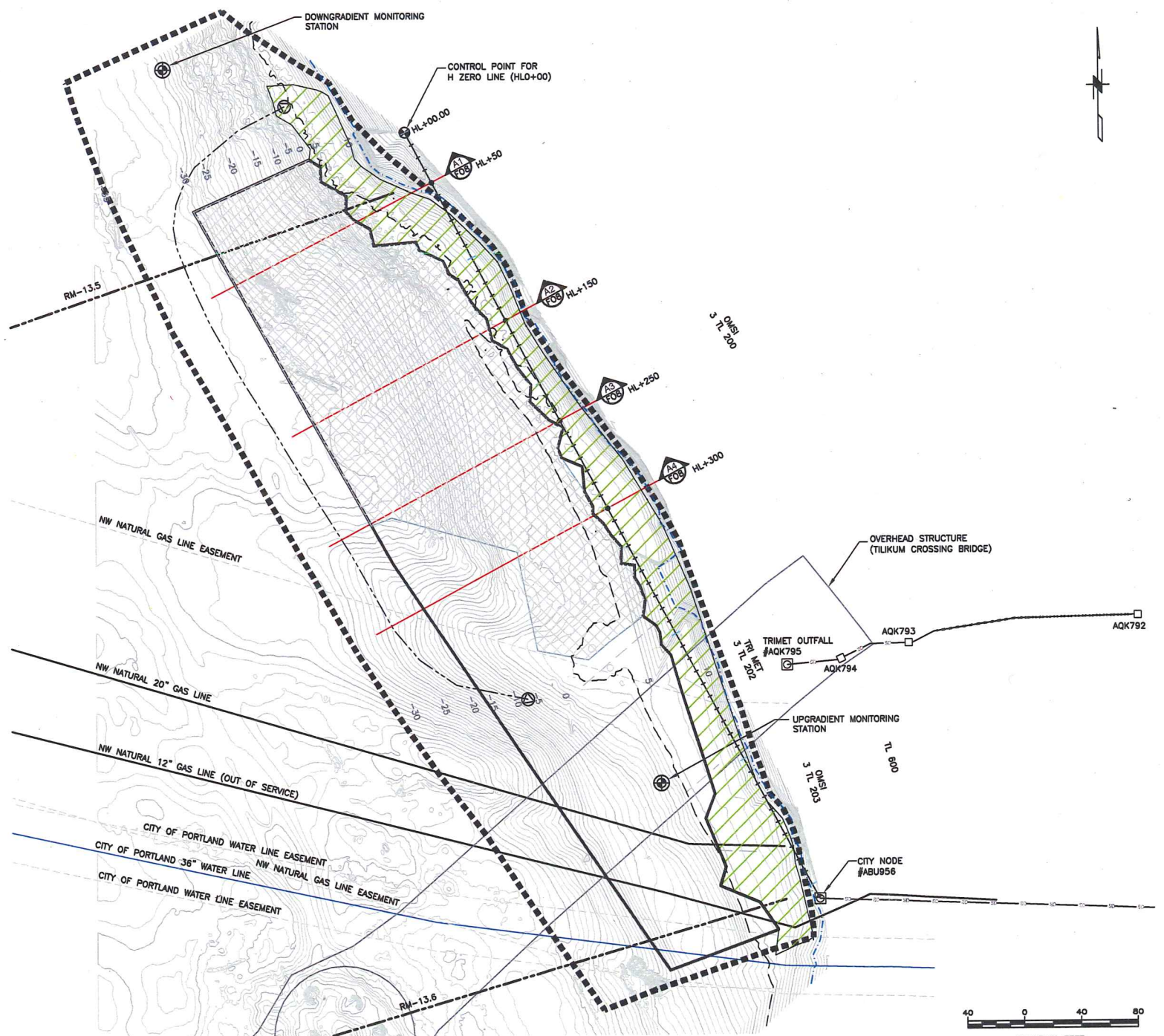


O:\25697878 PGE Cont. Env Svcs 2013\3000 Technical\RM 13.1_13.5 FS\RM 13.5 RD\Appendix A-90%\City of Portland Set\F04 Engineering Controls.dwg User:Paul_Flury Plotted: May 29, 2015 1:11pm Last Saved: Apr 09, 2015 2:55



NOTES:

1. NO WORK SHALL BE PERFORMED OUTSIDE THE PROJECT WORK LIMITS WITHOUT PRIOR WRITTEN APPROVAL BY THE OWNER.
2. THE CONTRACTOR SHALL BE RESPONSIBLE FOR ESTABLISHING AND MAINTAINING ALL SURVEY CONTROL POINTS IDENTIFIED FOR THE PROJECT. ALL SURVEY POINTS SHALL BE TIED TO THE EXISTING CITY OF PORTLAND CLASS A BENCHMARKS, BM3597 & BM3598, AND REPORTED IN NAVD88, IN FEET.
3. THE CONTRACTOR SHALL LOCATE AND PROTECT ALL EXISTING UTILITIES THROUGHOUT CONSTRUCTION.
4. THE CONTRACTOR SHALL NOT STORE OR STOCKPILE ANY MATERIALS ON THE ADJACENT PROPERTY WITHOUT PRIOR CONSENT, AUTHORIZED IN WRITING, BY THE OWNER.
5. THE CONTRACTOR SHALL INSTALL A FLOATING BOOM PRIOR TO DEBRIS REMOVAL TO CAPTURE ANY FLOATING MATERIAL GENERATED DURING THE REMOVAL ACTIVITIES. SEE REMEDIAL DESIGN REPORT FOR ADDITIONAL DETAILS.
6. THE CONTRACTOR SHALL RECORD THE TURBIDITY AT LEAST TWICE DAILY THROUGHOUT CONSTRUCTION AT EACH OF THE TURBIDITY MONITORING STATIONS IN ACCORDANCE WITH THE PERMIT REQUIREMENTS.
7. THE CONTRACTOR SHALL STOP WORK IF THE TURBIDITY AT THE DOWNRIVER MONITORING STATION IS MORE THAN 100% HIGHER THAN THE UPGRADIENT MONITORING STATION.
8. THE CONTRACTOR SHALL IMPLEMENT CONTINGENCY MEASURES, IF THE WORK RESULTS IN DOWNTIME DUE TO EXCURSION OF THE TURBIDITY LIMITS.

LEGEND:

- CONTROL POINT
- ⊙ GROUND SHOT
NORTHING, 678514, EASTING, 7646913,
NAVD88 14.042
- RIVER MILE (RM)
- ⊠ DISCHARGE POINT
- ⚠ CAP TRANSECTS
- STORM DRAIN
- ORDINARY LOW WATER
- ORDINARY HIGH WATER
- TILIKUM CROSSING BRIDGE ALIGNMENT
- ▨ RIP-RAP (EXISTING)
- STUDY AREA
- ▬ PROJECT WORK LIMITS
- ⊙ TURBIDITY MONITORING STATION
(SEE DETAIL CV-1, SHEET F08)
- TEMPORARY FLOATING BOOM
(LOCATION APPROXIMATE)
- 3 TL 200 TAX LOT
- TAX LOT BOUNDARIES
- ▨ TARGET AREA (ISOLATION CAP)

MONITORING STATION NAME	X	Y
DOWNGRADIENT MONITORING STATION	7646689	878644
UPGRADIENT MONITORING STATION	7647139	877956

PRELIMINARY
 NOT FOR CONSTRUCTION

JOB No. 25698205	DESIGNED: HWN	PROJ. ENGINEER: HWN
SCALE: AS NOTED	DRAWN BY: BJR	APPROVED BY: HWN
	CHECKED BY: BG	DATE: FEB 13, 2015

111 SW Columbia, Suite 1500
 Portland, Oregon 97201-5814
 (tel) 503-222-7200
 (fax) 503-222-4292
 www.aecom.com

Portland General Electric

Portland, Oregon

RIVER MILE 13.5, 90% SEDIMENT CAP DESIGN

 PROPOSED DEVELOPMENT SITE PLAN
 ENGINEERING CONTROLS

DRAWING NUMBER: F04	
CAD FILE NUMBER:	
SHEET: 4 OF 11	REV.

No.	DATE	BY	REVISION