

Consultants

CONSTRUCTION  
HOFFMAN CONSTRUCTION COMPANY  
805 SW BROADWAY #2100  
PORTLAND, OR 97205  
T 503-221-8811

STRUCTURAL ENGINEER  
KPFF CONSULTING ENGINEERS  
111 SW 5TH AVE #2500  
PORTLAND, OR 97204  
T 503-227-3251

CIVIL ENGINEER  
KPFF CONSULTING ENGINEERS  
111 SW 5TH AVE #2500  
PORTLAND, OR 97204  
T 503-227-3251

MEP ENGINEERS  
AFFILIATED ENGINEERS NW, INC.  
1601 5TH AVE #1400  
SEATTLE, WA 98101  
T 206-256-0800

LANDSCAPE ARCHITECT  
PLACE STUDIO  
735 NW 18TH AVE  
PORTLAND, OR 97209  
T 503-334-2080

Revisions

**OHSU Commons  
CHH South  
Block 29**

3485 SW Bond Ave  
Portland, OR 97239

Drawing Title

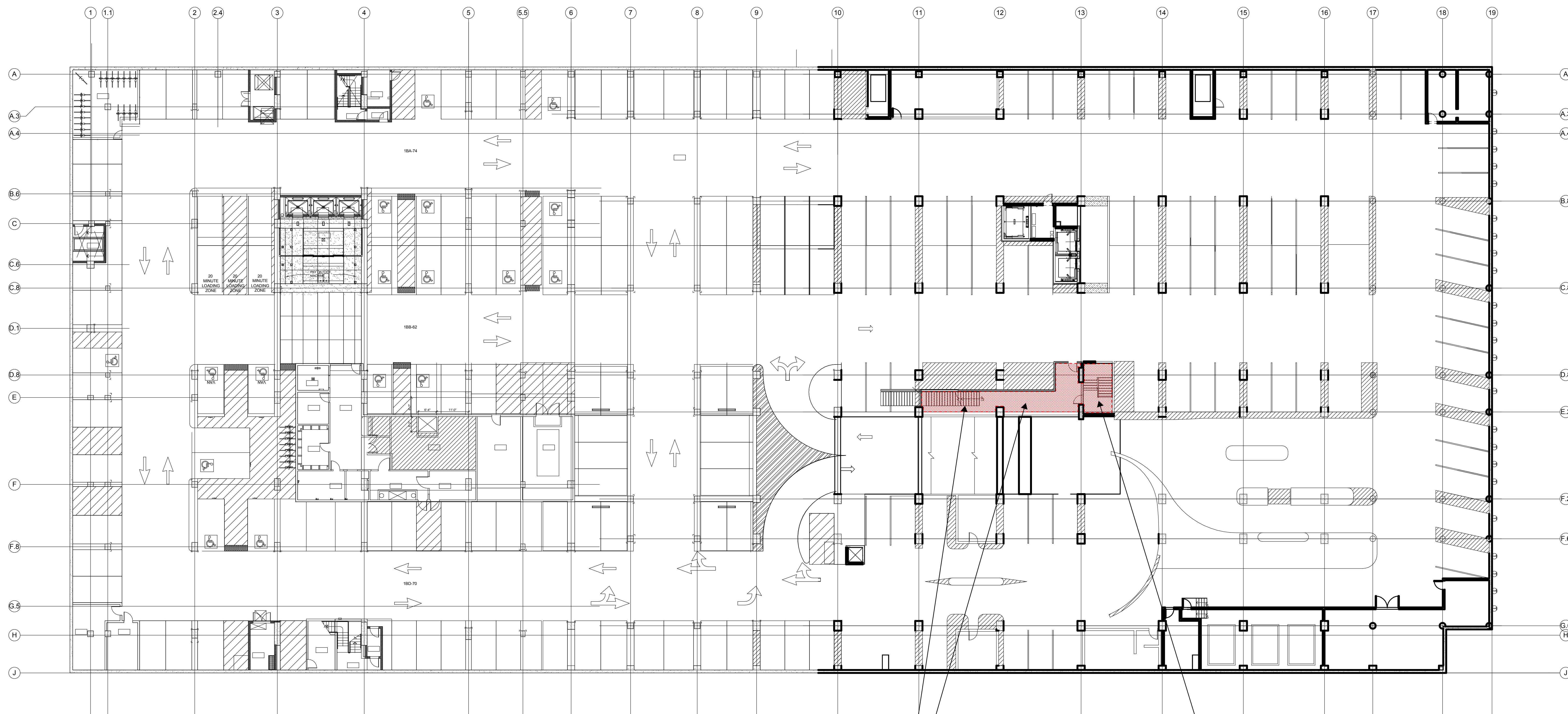
**PARKING LEVEL 1  
(B29/B25)**



Date: 05.02.2016  
Job No: 22681.chh  
Drawn By: KC  
Checked By: Checker

Drawing No.

**A2.P1.1  
EXHIBIT 'C'**



**1**  
A2.P1.1  
FLOOR PLAN - PARKING LEVEL 1.1  
1/16" = 1'-0"

NEW EXIT PASSAGEWAY  
AND EGRESS STAIR

EXISTING EGRESS  
STAIR

## OHSU Commons CHH South Block 29

3485 SW Bond Ave  
Portland, OR 97239

Drawing Title  
PLAN - FLOOR -  
LEVEL 1

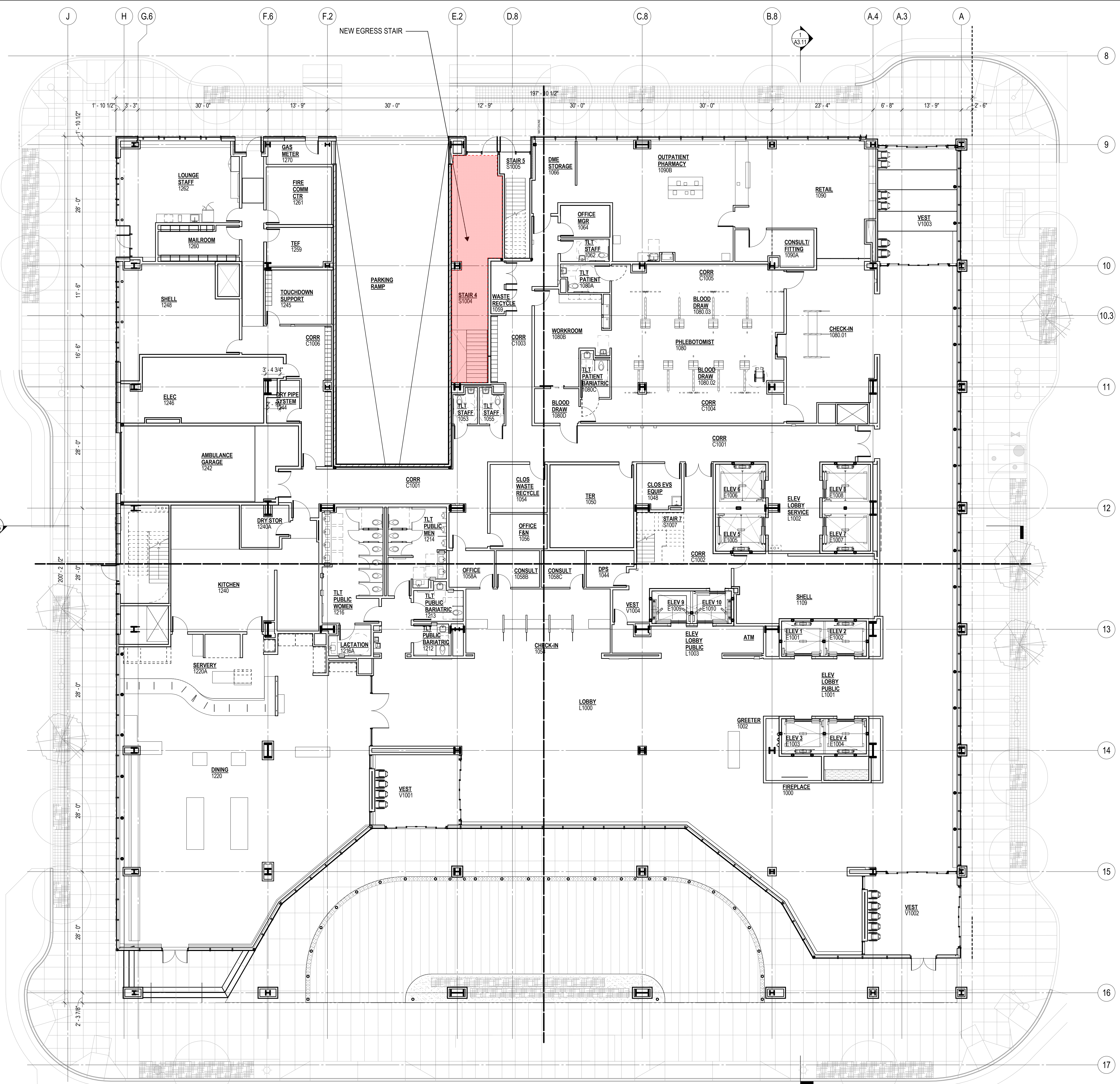


Date: 05.02.2016  
Job No: 22881.chh  
Drawn By: KC  
Checked By: DG

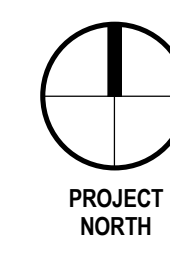
Drawing No.

# A2.01 EXHIBIT 'C'

August 15, 2016  
2 of 2



1 FLOOR PLAN - LEVEL 1  
A2.01 1/8" = 1'-0"



A	B
C	D