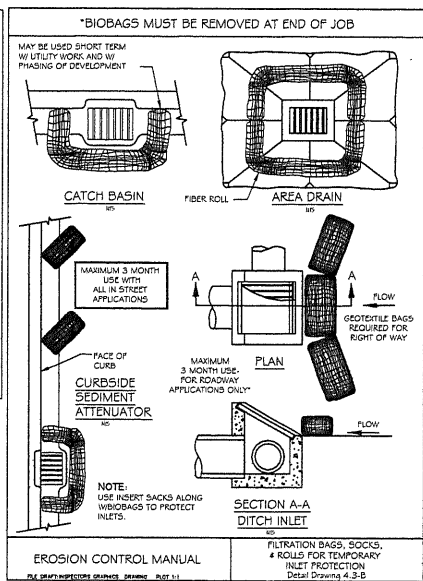


TECHNICAL GUIDANCE HANDBOOK
TEMPORARY EROSION CONTROL
DRAWING 4.1-2
Scale: 1/4\"/>

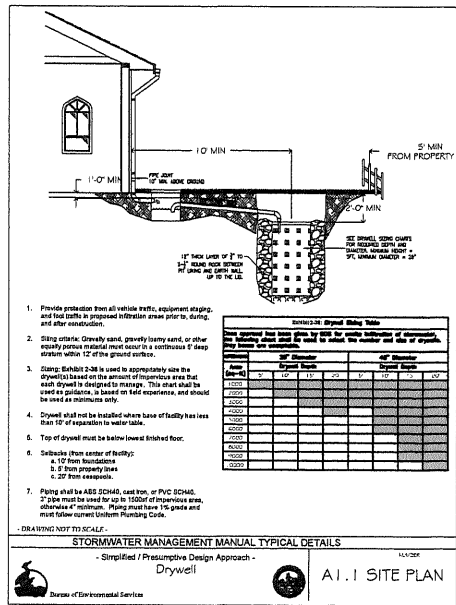
2 EROSION CONTROL
A.I.I.



3 EROSION CONTROL
Scale: N.T.S.

TECHNICAL GUIDANCE HANDBOOK
GRAVEL CONSTRUCTION ENTRANCE
Detail Drawing 4.1-A

3 EROSION CONTROL
A.I.I.



4 EROSION CONTROL
A.I.I.

1. Provide protection from all vehicle traffic, equipment staging, and fuel spills in proposed infiltration area prior to, during, and after construction.

2. Using various drainage sand, gravelly heavy sand, or other equally porous material must occur in a continuous 2' deep column within 12" of the ground surface.

3. Classify Exhibit 2-26 is used to appropriately size the drywells based on the amount of impervious area that each drywell is designed to manage. This area should be used as guidance, is based on field experience, and should be used as a minimum only.

4. Drywells shall not be installed where base of facility has less than 10' of expansion to water table.

5. Top of drywell must be below lowest finished floor.

6. Sediments (then center of facility):
a. 12" from foundation
b. 2' from property lines
c. 2' from easements

7. Piping shall be ADS SCH40, cast iron, or PVC SCH40. 2" pipe must be used for up to 10000' of impervious area, otherwise 4" minimum. Piping must have 1% slope and must follow current Oregon Plumbing Code.

DRAWING NOT TO SCALE.

STORMWATER MANAGEMENT MANUAL TYPICAL DETAILS
- Simplified / Presumptive Design Approach -
Drywell
A.I.I. SITE PLAN
Scale: 1/4\"/>

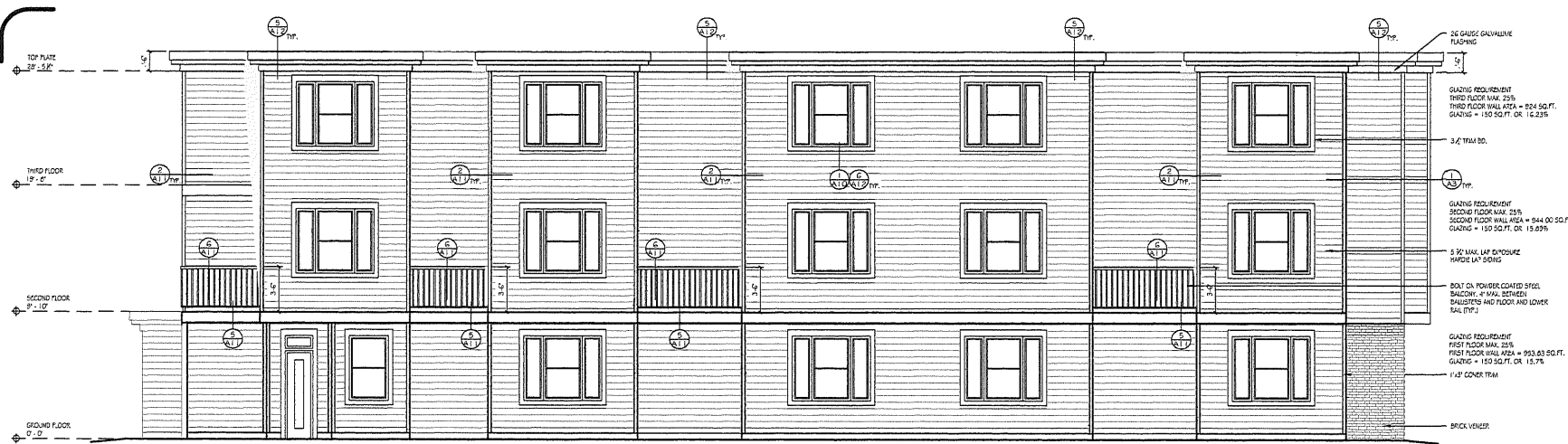
5 DRYWELL DETAIL
A.I.I.

MENTRUM ARCHITECTURE INCORPORATED
1880 S.E. MORRISON ST.
PORTLAND OR. 97216
PHONE 971-270-9663
REVISIONS:

436 NE STAFFORD ST
PORTLAND OR. 97266

6/02/2017

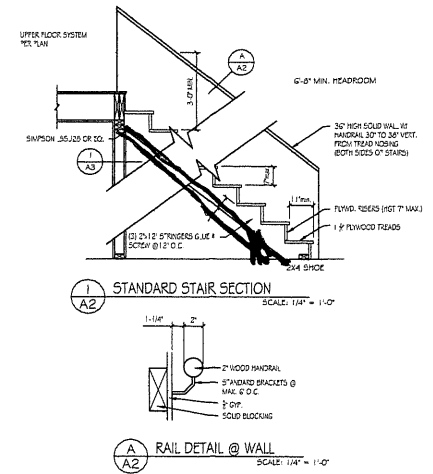
SHEET NO:
A.I.I.
OF 12



EAST ELEVATION PLAN
Scale 1/4" = 1'-0"



NORTH ELEVATION PLAN
Scale 1/4" = 1'-0"



1 STANDARD STAIR SECTION
SCALE: 1/4" = 1'-0"

A RAIL DETAIL @ WALL
SCALE: 1/4" = 1'-0"

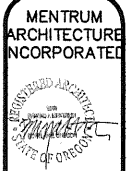
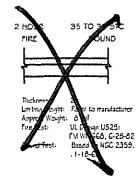
GA FILE NO. WP 1841

SOLID OPSUM WALLBOARD
ONE LAYER, 1/2" PROPRIETARY TYPE 2 OPSUM WALLBOARD OR OPSUM VENEER BASE APPLIED PARALLEL TO EACH SIDE OF 1 1/2" PROPRIETARY TYPE 3 OPSUM PANELS WITH LANGRITHING COUPLING COVERED OVER THE ENTIRE CONTACT SURFACE AND 1 3/4" TYPE 3 SCREWS 24" O.C. HORIZONTAL AND VERTICALLY. 1" OPSUM CORNERBOARD PANELS ATTACHED TO 26 GAUGE 1 1/2" X 1/4" TRIM 1/4" FURNERS ALONG FLOOR AND CEILING LINES WITH TWO 1 3/4" TYPE 3 SCREWS AT TOP AND BOTTOM. WALLBOARD LAYERS ATTACHED TO C-TUNERS WITH 1/2" TYPE 3 SCREWS 12" O.C.

JOINTS STAGGERED 12" ON OPPOSITE SIDES. NUBS
PROPRIETARY OPSUM BOARD
UNITED STATES OPSUM COMPANY

1/2" GOLD BRND BRAND FIRE SHIELD G
OPSUM WALLBOARD
1" GOLD BRND BRAND FIRE SHIELD
SMAPLUXER

2-HOUR SHAFT DETAIL
TANDER STAIRS



11880 S.E. MORRISON ST.
PORTLAND OR. 97216
PHONE 971-270-9883

REVISIONS:

NO.	DESCRIPTION

436 NE STAFFORD ST
PORTLAND OR. 97266

6/02/2017

SHEET NO:
A2
OF 12

