

**PARK AVENUE WEST  
FIRE & LIFE SAFETY SUMMARY**

- Governing Codes:**
  - 2007 Oregon Structural Specialty Code
  - 2007 Oregon Fire Code
  - 2007 Oregon Mechanical Specialty Code
  - 2008 Oregon Electrical Specialty Code
  - 2008 Oregon Plumbing Specialty Code
  - 2005 Oregon Elevator Specialty Code
  - 2002 NFPA 13
- Building Occupancy Classification:**
  - a) Occupancy Classifications: S-2 at below grade enclosed parking garage; M at level 1&2 retail; B at level one lobby and levels 3 thru 26 office; Non-separated occupancies (508.3.2); High rise buildings (403); Enclosed Parking Garage (406.2 & 406.4)
  - b) Occupancy separation
  - c) Special detailed requirements

- Building Area:**
  - a) Sum of Recess Calculation: N/A (non-separated occupancies 508.3.2.2)
  - b) Allowable Area (A2)(Table 503): Unlimited
  - c) Total building perimeter (P): not used
  - d) Perimeter used as Frontage (F): not used
  - e) Width of Public Way (W): not used
  - f) Increase due to frontage (F): not used
  - g) Automatic Sprinkler Increase (Is) (506.3): not used
  - h) Allowable Area per story: Unlimited
  - i) Multiple story multiplier (506.4): not used
  - j) Total Allowable Building Area: Unlimited
  - k) Proposed Building Area Summary by Floor:

LEVEL	S2	M	B	TOTAL
L16 (Basement)	18,656			18,656
L15	22,342			22,342
L14	21,821			21,821
L13	21,970			21,970
L12	21,781			21,781
L11	19,662			19,662
1	12,167	3,017	15,184	30,368
2	18,000			18,000
3	14,723	14,723		29,446
4-5	14,994	14,994		29,988
6	13,297	13,297		26,594
7-20	14,298	14,298		28,596
21	13,773	13,773		27,546
22	14,213	14,213		28,426
23	14,288	14,288		28,576
24	14,487	14,487		28,974
25	10,371	10,371		20,742
26	10,310	10,310		20,620
27 - MECH. PENTHOUSE				
GRAND TOTAL	136,322	30,187	324,361	490,870

- Building Height:**
  - a) Proposed Building Height (502.1): 405'-7"
  - b) Maximum Allowable Height (Table 503): Unlimited
  - c) Proposed number of stories: 27 + (6 below grade) = 33
  - d) Allowable number of stories (Table 503): YES (Level L16)
  - e) Basement (502.1): 84'-9" non-combustible steel spiral @ east side
  - f) Roof Structures (504.3)
- Building Construction Type:**
  - a) Type of Construction: Type II (reduction from Type IA per section 403.3.1.1) \* sprinkler coverage provided throughout
  - b) Proposed Fire Protection: 2 (2 hour for columns supporting floors)
  - c) Structural Frame: 2
  - d) Exterior Bearing Walls: 2
  - e) Interior Bearing Walls: 2
  - f) Partitions: 2
  - g) Floor Construction: 0
  - h) Roof Construction: 2

\*NOTE: Section 403.3 allows construction type reduction from IA to IB excepting the fire resistance rating for columns supporting floors must remain per IA requirements.

- Fire Resistant Building Elements**
  - a) Exterior Walls (Table 602): fire separation distance ≥ 30 feet = 0; fire separation distance < 30 feet = 1; Unprotected / No Limit (min. rad = 21 feet); 1 (reduced from 2hr per section 403.3.2) \*
  - b) Exterior opening protection (Table 704.8)
  - c) Shaft enclosures (Section 707)
  - d) Exit enclosures (Section 1009.1)
  - e) Door & Shutter protection (Table 715.4): 1, 1/2, \*\*
  - f) 1-hour Shafts: 1/2
  - g) Other 1-hour fire barriers: 3/4
  - h) Corridor Walls: 3/4
  - i) Other fire Partitions (1hour): 3/4
  - j) Exterior walls (1hour): 3/4
  - k) Interior Wall/Ceiling Finish (Table 602.3): Class B
  - l) Interior Floor Covering (Section 804.4.1): must meet DOC FF-1 (all test)
  - m) Roof assembly fire class (Section 1506): Class B
  - n) Elevator Lobbies (Section 707.14): Pressurized hold-way used in lieu of lobby (707.14.2)
  - o) Generator Enclosure (Section 403.10.1): 2 hour Fire Barrier

\*NOTE: Section 403.3.1 allows shaft enclosure reduction to 1hr where automatic controllers are installed within the shaft enclosure at the top and alternate floor levels. Stair & elevator enclosures are excluded.

\*\*NOTE: Temperature rise doors are not required (715.4.4 exception)

- Egress Requirements:**
  - a) Occupant Load calculation: (see FLS sheets for space by space breakdown)
    - Level L16: 87
    - Level L15: 114
    - Level L14 & L13: 111
    - Level L12: 104
    - Level L11: 115
    - Level 1: 503
    - Level 2: 300
    - Level 3: 184
    - Level 4-5: 149
    - Level 6: 242
    - Level 7-20: 142
    - Level 21: 171
    - Level 22-24: 144
    - Level 25: 368
    - Level 26: 103
    - Level 27: x (common path of travel <100'-0") (1015.1)
  - b) Egress width per occupant served: (OSCC 1005.1)
    - Stairways: 2' per occupant
    - Other egress components: 1.5' per occupant
  - c) Common Path of Egress Travel: 75 feet @ M Occupancy (1014.3); 100 feet @ B & S Occupancies (1014.3) x1
  - d) Access travel distance (Table 1016.1): 250 feet at M occupancy; 300 feet at B occupancy; 400 feet at S-2 occupancy
  - e) Corridor Rating (Table 1017.1): 0 hour @ M/S/M occupancies
  - f) Number of Exits (1019): 2 exits required per floor
  - g) Vertical Exit Enclosure (1020): Pressurized stairways provided (909.20); Ventrilates not required (1020.1.7.2 Exception)
  - h) Exit Passageways (1021): Exit passageways connect vertical exit enclosures to the building exterior @ Level One; 44' minimum width; 2 hour fire barrier (706); Pressurized as stairway (1020.1.7.1.2)
  - i) Egress convergence (1004.5): Convergence occurs at Level One Stairways.
  - j) Discharge Identification Barrier (1020.1.5) Barriers & directional signage provided @ Level One stairs to prevent travel below level of discharge.
  - k) Exit Discharge (1024)
  - l) Exit Signage (1011): Placed at stairway entrances, corridor intersections and exits from the building; On emergency power; 100' max. viewing distance to any exit sign.
  - m) Means of Egress Illumination (1006): Emergency lighting provided in corridors, stair landings, elevator cabs and along path of egress travel; Powered by on-site emergency generator; One foot candle minimum at walking surface.

See FLS sheets for additional egress information

- Fire Suppression:**
  - a) Automatic Sprinkler System: Required (403.2)
    - i) Sprinkler system: NFPA 13 Standard/quick response; Secondary on-site tank supplied by City water main @ 1.43 not usable gallons; Located on L16
    - ii) water supply: Throughput; Parking Levels served by dry pipe system; Low pressure monitoring switches; Pressure alarm switches
  - vi) Wet system: Conditioned spaces served by wet pipe system; Supervised control valve, gauge, check valve, water flow switch, test and drain station provided for each wet pipe system; Floor control zone valves serve each full floor zone; Supervised control valve, check valve, pressure gauge & flow switch at each floor control assembly; Pressure reducing valves provided at each floor where pressure is expected to exceed 175 psi; Class I automatic wet combined system (NFPA 14); Topmost outlet at Standpipe 1 is dry, supplied by post indicator controlling valve in conditioned ceiling space below; control valve normally closed; Hose connections at intermediate stairwell landings at first floor @ above; Hose connections at floor level stairwell landings at below grade levels; Hose outlets provided at roof level; Pressure reducing valves limit hose outlet to 150PSI; Connected to main FDC
  - c) Standpipes: Electric fire pump booster system (NFPA 20); Located on Level L15; Supplies combined standpipe/sprinkler system; 100psi/500gpm for topmost outlet @ standpipe I; 100psi/250gpm for topmost outlet @ standpipe II; Tank connection water source; 100psi/500gpm for topmost outlet @ standpipe I; 100psi/250gpm for topmost outlet @ standpipe II; Tank connection water source with city water bypass; Located at street level mounted to exterior of Fire Command Center on West Facade; Water flow switches activate outside alarm bell & signal alarm panel; Pressure switches activate outside alarm bell & signal alarm panel; Supervisory switches signal alarm panel when normally open control valve is closed, or when normally closed valve is open; Signals also sent to monitoring service.
  - d) Fire Pumps: Electric fire pump booster system (NFPA 20); Located on Level L15; Supplies combined standpipe/sprinkler system; 100psi/500gpm for topmost outlet @ standpipe I; 100psi/250gpm for topmost outlet @ standpipe II; Tank connection water source; 100psi/500gpm for topmost outlet @ standpipe I; 100psi/250gpm for topmost outlet @ standpipe II; Tank connection water source with city water bypass; Located at street level mounted to exterior of Fire Command Center on West Facade; Water flow switches activate outside alarm bell & signal alarm panel; Pressure switches activate outside alarm bell & signal alarm panel; Supervisory switches signal alarm panel when normally open control valve is closed, or when normally closed valve is open; Signals also sent to monitoring service.
  - e) Alarms: Pressure switches activate outside alarm bell & signal alarm panel; Supervisory switches signal alarm panel when normally open control valve is closed, or when normally closed valve is open; Signals also sent to monitoring service.
  - f) Portable Fire extinguishers provided
  - g) Type and Size of Fire extinguisher: see plans; Multipurpose Dry-Chemical Type UL-rated 2-A:10-B:C, 2.3-kg (5-lb) nominal capacity

- Fire Alarm and Detection Systems:**
  - a) Smoke detection and fire alarm systems: Required (403.5, 403.6, 403.7); Smoke detectors connected to automatic alarm system; Automatic fire detection: Unintelligible; Activation operates voice/alarm communication system; Main electrical and telephone rooms; Fire command center; Elevator machine rooms; Elevator shaft - every 5th floor; Air handling units exceeding 2,000cfm (supply & return); Connections to return air vertical fire rating 2+ stories; Corridors; Landings; Stairwells; Outside each door leading to pressurized shaft enclosure; Elevator Lobbies; 100psi/500gpm for topmost outlet @ standpipe I; 100psi/250gpm for topmost outlet @ standpipe II; Mounted 42"-48" above finish floor; Read in color; Monitored by supervising station
  - b) Detector Locations: Public and common areas; Corridors; Retail spaces; Open office areas; Elevator groups; Exit stairway groups; Each floor group; Manual override for selective and all-call paging; Capability to broadcast live voice messages; Elevator Cab; Emergency and stand-by power rooms; Fire Pump Rooms; Exit Stairwell Landings; Main Fire Alarm Control Panel to be addressable and utilize voice evacuation for notification; Smoke control panel with status indicators and controls for smoke control fans and dampers will be integrated with fire alarm system; Monitor points for emergency generator, sprinkler flow and tamper switches, fire pump, mechanical smoke control system monitoring, testing, manual override, damper position and power downstream of disconnects; Testing per NFPA 72 & City of Portland requirements.
  - c) Manual pull stations (Section 907.3.2): 2
  - d) Power supply: Secondary system power by emergency generator; Separate zones at each floor; smoke detectors, water-flow devices, and manual pull stations; Annunciate panel located in Fire Command Center
  - e) Zoned: Public and common areas; Corridors; Retail spaces; Open office areas; Elevator groups; Exit stairway groups; Each floor group; Manual override for selective and all-call paging; Capability to broadcast live voice messages; Elevator Cab; Emergency and stand-by power rooms; Fire Pump Rooms; Exit Stairwell Landings; Main Fire Alarm Control Panel to be addressable and utilize voice evacuation for notification; Smoke control panel with status indicators and controls for smoke control fans and dampers will be integrated with fire alarm system; Monitor points for emergency generator, sprinkler flow and tamper switches, fire pump, mechanical smoke control system monitoring, testing, manual override, damper position and power downstream of disconnects; Testing per NFPA 72 & City of Portland requirements.
  - f) Alarm notification: 1. Visible alarms: Public and common areas; Corridors; Retail spaces; Open office areas; Elevator groups; Exit stairway groups; Each floor group; Manual override for selective and all-call paging; Capability to broadcast live voice messages; Elevator Cab; Emergency and stand-by power rooms; Fire Pump Rooms; Exit Stairwell Landings; Main Fire Alarm Control Panel to be addressable and utilize voice evacuation for notification; Smoke control panel with status indicators and controls for smoke control fans and dampers will be integrated with fire alarm system; Monitor points for emergency generator, sprinkler flow and tamper switches, fire pump, mechanical smoke control system monitoring, testing, manual override, damper position and power downstream of disconnects; Testing per NFPA 72 & City of Portland requirements.
  - ii) Audible alarms: 1/2
  - iii) Voice/Alarm Communication System: Speakers located throughout building by paging zones; Elevator groups; Exit stairway groups; Each floor group; Manual override for selective and all-call paging; Capability to broadcast live voice messages; Elevator Cab; Emergency and stand-by power rooms; Fire Pump Rooms; Exit Stairwell Landings; Main Fire Alarm Control Panel to be addressable and utilize voice evacuation for notification; Smoke control panel with status indicators and controls for smoke control fans and dampers will be integrated with fire alarm system; Monitor points for emergency generator, sprinkler flow and tamper switches, fire pump, mechanical smoke control system monitoring, testing, manual override, damper position and power downstream of disconnects; Testing per NFPA 72 & City of Portland requirements.
  - g) Fire department Communication System: 2 hour Fire Barrier
  - h) Other Features: Main Fire Alarm Control Panel to be addressable and utilize voice evacuation for notification; Smoke control panel with status indicators and controls for smoke control fans and dampers will be integrated with fire alarm system; Monitor points for emergency generator, sprinkler flow and tamper switches, fire pump, mechanical smoke control system monitoring, testing, manual override, damper position and power downstream of disconnects; Testing per NFPA 72 & City of Portland requirements.

- Fire Department Access:**
  - a) Fire Department Vehicle Access: Public streets along all 4 sides of the building; 26 feet required for aerial apparatus.
  - b) Roadway width: 26 feet required for aerial apparatus.
  - Notes: Existing roadway does not provide 26 feet of clear width. See appeal #5651 for Alternative Proposal.
  - c) Fire Hydrant Access: No portion of the exterior of the building shall be more than 250 feet from a fire hydrant as measured along an approved manner around the outside of the building and along an approved fire apparatus access roadway.
  - d) Minimum number of fire hydrants: x required
  - e) Estimated fire flow required: xxx GPM.
  - See FLS site plan for additional information

- Fire Command Center**
  - a) Separation: One Hour Fire Barrier (Section 706)
  - b) Size: 96 SF minimum required
  - c) Features: Emergency voice/alarm communication system unit; Fire Department Communication Unit; Fire Detection & Alarm annunciator; Elevator location annunciator unit; Status indicators & controls for air-handling systems; Fire fighters control panel for smoke control systems; Controls for unlocking stairway doors simultaneously; Sprinkler valve & water flow detector display panels; Emergency & stand-by power status indicators; Fire dept. phone w/ control access to public phone; Fire Pump status indicators; Schematic Building Plans; Notables; Generator supervision devices; Public Address system

- Emergency Stand-by Power**
  - a) Generator: 1000 KW diesel-powered located on level L11; Side-mounted with a double-well tank; Fuel supply exceeds 2 hour backup time per OFC 604.2.15; Automatic start upon failure of utility power; Remote fuel fill station (includes overflow protection); Located ground floor level at the loading dock; Accessible by truck off the street; Life safety transfer switch will be open-transition; Standby transfer switch will be closed-transition
  - b) Refueling: Fire pumps; Exit stair tower pressurization fans (standby power branch); Elevator shaft pressurization fans (standby power branch); Elevator (standby power branch); Signage lighting (life safety power branch); Exit signage (life safety power branch); Elevator cab and machine room lights (life safety power branch); Lighting circuits supplying the fire command center, fire pump room, generator room and main electrical room (life safety power branch); Fire alarm/detector/comm. system (life safety power branch); Building communication systems (life safety power branch); Elevator machine room cooling (standby power branch)
  - c) Switching: Fire pumps; Exit stair tower pressurization fans (standby power branch); Elevator shaft pressurization fans (standby power branch); Elevator (standby power branch); Signage lighting (life safety power branch); Exit signage (life safety power branch); Elevator cab and machine room lights (life safety power branch); Lighting circuits supplying the fire command center, fire pump room, generator room and main electrical room (life safety power branch); Fire alarm/detector/comm. system (life safety power branch); Building communication systems (life safety power branch); Elevator machine room cooling (standby power branch)
  - d) Systems Supported: Fire pumps; Exit stair tower pressurization fans (standby power branch); Elevator shaft pressurization fans (standby power branch); Elevator (standby power branch); Signage lighting (life safety power branch); Exit signage (life safety power branch); Elevator cab and machine room lights (life safety power branch); Lighting circuits supplying the fire command center, fire pump room, generator room and main electrical room (life safety power branch); Fire alarm/detector/comm. system (life safety power branch); Building communication systems (life safety power branch); Elevator machine room cooling (standby power branch)

- HVAC and Smoke Control**
  - Fire & Smoke Damper Locations: Provided when ducts penetrate fire barriers. Dampers will be rated for 1.5 hours in 1 and 2 hour fire barriers.
  - Fire/smoke dampers: Provided when a supply duct penetrates a shaft enclosure, 1.5 hour fire-smoke damper will be provided.
  - Parking Garage: System set to shut down in an alarm event.
  - Generator: Generator exhaust and parking garage are exempt per section 716.5.3 exceptions 1, 4 and 3.
  - Exit Enclosure Pressurization: Stairwells will be pressurized for smoke control per 1020.1.7 & 909.20. Each stairwell will have a pressurization fan located at the roof and first floor bringing in 100% outside air to provide smoke control. Supply fans will be provided with VFDs to allow for balancing; Pressurized air will be heated to eliminate the maximum stack effect using heated air from the penthouse DHW storage tank through a heat exchanger and the condenser loop; In an alarm event the stairwell enclosure is designed to maintain a minimum differential pressure of 0.15 inch water column relative to the building and a maximum of 0.35 inch water column; The pressure distribution will be maintained with all doors closed. A rooftop relief vent with normally open (power closed) motorized damper is designed to relieve a minimum of 2,500 cfm at 0.15 inch WC; Door latches will be designed to release with a force of 15 pounds, and the opening force to set the door in motion will not exceed 30 pounds. Once in motion, the door shall require a maximum of 15 pounds to swing in the full-open position; Doors at stair enclosures to be dual egress to ensure doors return to fully closed position once opened; Electrically powered components of the pressurization system to be provided with emergency power; System includes fireman's override panel at fire command rooms on ground floor; Minimum inlet/outlet distance to Property line; Fire system shall monitor damper position via fire system monitor module. System shall monitor pressurization fans via addressable relays; In an alarm event stairway pressurization fans will be activated to pressurize the exit passageways as an extension of the stairway enclosures; Pressurization fans will be initiated by a signal from a smoke detector located in the corridor, machine room or lobby area or open sprinkler water flow; Pressurization fans for the stairwells will be programmed to shut down upon an alarm from the smoke detector at the intake of the fan pressurizing the stairwell this function can be overridden at the FACP; Passing criteria for the test will be with all elevator and stairwell pressurization systems running and with all doors closed;
  - Elevator Shaft Pressurization: Elevator lobbies 1 thru 6, 8 and 9 will be pressurized in lieu of providing an elevator lobby (Section 707.14.2). See H302 for fan locations; Elevator hoistways are designed to maintain a minimum pressure between the hoistway and floor of 0.05 inch WG with all doors open at the rated floor; All fans to be provided with VFDs and all electrical components of the pressurization system to be provided with emergency power; System includes fireman's override panel at fire command rooms on ground floor; Panel will connect to dampers at each floor; Fire system shall monitor damper position via fire system monitor module. System shall monitor pressurization fans via addressable relays; A supply duct smoke detector will be provided and will shut down the pressurization system if fire smoke is detected at the fan intake and can be overridden at the FACP. The pressurization intake will be 20 feet away or 2 feet below any smoke relief outlet.

- Occupancy Ventilation Requirements:**
  - Minimum inlet/outlet separation: 10 feet; from contaminated source or 2 feet below
  - Minimum inlet/outlet distance to Property line: 10 feet; Environmental Exhaust to be 10 feet above grade
  - Minimum inlet/outlet height: See attached Ventilation Schedule

- Energy Code Requirements:**
  - Energy Code Analysis method Used: Whole Building Method
  - Refer to energy model simulation results included in permit application

- Plumbing Fixtures:**
  - Minimum Number of fixtures required: See FLS Sheets for fixture schedule

- Special Inspections:**
  - Special inspections are required for the following elements:
    - Fabrication (Section 1704.2)
    - Steel Construction (Section 1704.3)
    - Concrete Construction (Section 1704.4)
    - Masonry Construction (Section 1704.5)
    - Soils (Section 1704.7)
    - Foundations (Section 1704.8 & 1704.9)
    - Sprayed fire resistive materials (Section 1704.10)
    - Fire relative coatings (Section 1704.11)
    - Smoke Control Systems (Section 1704.14)
    - Seismic Resistance (1705.3 & 1707)
  - See Structural drawing sheet SD.03 for Special Inspections Program

- Structural Observation:**
  - Structural Observations are required. See Structural drawing sheet SO.02 & SO.03 for Structural Observation Program.

- Deferred Submittals:**
  - Elevators: Spray applied fire-proofing; PT casting; Steel Stairs; Guardrails; Curtain Wall System; Stone panels; Seismic instrumentation; Seismic restraints; Seismic calculations for equipment over 4000lb; Window washing bracket calculations; Fire Alarm System; Fire Sprinkler Systems

**PRESTRESSING PROGRAM:**  
THE GENERAL CONTRACTOR SHALL SCHEDULE A PRESTRESSING MEETING WITH THE BUILDING INSPECTOR AND ALL SUBCONTRACTORS THAT WILL BE INSTALLING PRESTRESSING MATERIALS. THE CONTRACTOR SHALL PROVIDE A PRESTRESSING MATRIX LISTING ALL PRESTRESS MATERIALS/ASSEMBLIES WHICH WILL BE USED, THE TYPE OF PENETRATIONS WHERE EACH MATERIAL/ASSEMBLY WILL BE USED, THE LISTING AND APPROVAL INFORMATION (I.E. UL, ICC OR OTHER APPROVED RIBBON/TESTING NUMBER); AND THE SUBCONTRACTOR RESPONSIBLE FOR INSTALLATION. THIS INFORMATION MUST BE SUBMITTED TO, AND APPROVED BY, THE ARCHITECT AND BUILDING INSPECTOR PRIOR TO ANY INSTALLATION

- APPEALS - GRANTED BY COP APPEAL BOARD**
- 4989 03.07.08 2007 OSCC, SECTION 3202.3.2 ENCROACHMENTS  
ITEM 1: REQUIRES: WHERE THE VERTICAL CLEARANCE ABOVE GRADE TO PROJECTING ARCHITECTURAL FEATURE IS MORE THAN 8 FEET, THE MAXIMUM ENCROACHMENT SHALL BE 4'-0".  
APPROVED: THE ARCHITECTURAL FEATURE IS USED TO REDUCE THE SCALE AT ALL BUILDING FACADES AT STREET LEVEL WHICH WILL BOTH HUMANIZE THE PEDESTRIAN EXPERIENCE AND COMPLEMENT SIMILAR FEATURES ON ADJACENT BUILDINGS.
  - 5076 04.14.08 2007 OSCC, SECTION 1014.3 EGRESS THROUGH INTERVENING SPACES  
ITEM 1: REQUIRES: EGRESS FROM A ROOM OR SPACE SHALL NOT PASS THROUGH ADJOINING OR INTERVENING ROOMS OR AREAS EXCEPT WHERE ROOMS OR AREAS ARE ACCESSORY, NOT HIGH-HAZARD, AND A DISCREETABLE PATH OF EGRESS TRAVEL.  
APPROVED: MEN'S AND WOMEN'S LOCKER ROOMS SERVE A SECONDARY, SUBORDINATE FUNCTION TO THE PARKING GARAGE, IS NOT HIGH-HAZARD, AND PROVIDES A DIRECT AND CLEAR PATH OF EGRESS. THESE ROOMS WILL BE USED FOR SHORT PERIODS OF TIME AND TYPICALLY ONLY BY A FEW PEOPLE AT ONE TIME.
  - 5154 05.08.08 2007 OFC, SECTION 804.2.15.1 STANDBY POWER  
ITEM 1: REQUIRES: WHERE THE STANDBY SYSTEM IS A GENERATOR SET INSIDE A BUILDING, THE SYSTEM SHALL BE LOCATED IN A SEPARATE ROOM ENCLOSED WITH 2-HR FIRE BARRIERS OR HORIZONTAL ASSEMBLIES CONSTRUCTED IN ACCORDANCE WITH THE INTERNATIONAL BUILDING CODE, OR BOTH.  
APPROVED: FOR THE GENERATOR EXHAUST AND FOR L13 PARKING GARAGE EXHAUST WILL BE FROM FREE AREA OF THE PARKING GARAGE ENTRANCE. A UNRATED OPENING INTO THE GENERATOR ROOM WILL BE SPRINKLED TO KEEP FIRE OUT AND NO STORAGE OR PARKING WILL BE WITHIN 10'-0" OF THE OPENING. THE UNRATED OPENING IN THE GARAGE EXHAUST FAN ENCLOSURE WILL BE SPRINKLED TO KEEP FIRE OUT. THE EXHAUST DUCT THAT RUNS FROM THE GENERATOR ROOM TO THE EXHAUST DUCT WILL BE CONSTRUCTED OF 18 GAUGE SHEET METAL AND WILL BE SPRINKLED BELOW AT 10'-0" INTERVALS.
  - 5851 10.03.08 INTERNATIONAL FIRE CODE  
ITEM 1: REQUIRED: D103.1. AN UNOBSTRUCTED DRIVING SURFACE OF 36 FEET FOR THOSE PORTIONS ADJACENT TO FIRE HYDRANTS SHALL BE PROVIDED. D103.1. BUILDINGS ON PORTIONS OF BUILDINGS EXCEEDING 30 FEET IN HEIGHT ABOVE THE LOWEST LEVEL OF FIRE DEPARTMENT VEHICLE ACCESS SHALL BE PROVIDED WITH APPROVED FIRE APPARATUS ACCESS ROADS CAPABLE OF ACCOMMODATING FIRE DEPARTMENT VEHICLES. D103.2 - ARRIAL FIRE APPARATUS ACCESS ROADS SHALL HAVE MINIMUM UNOBSTRUCTED WIDTH OF 26 FEET IN THE IMMEDIATE VICINITY OF ANY BUILDING OR PORTION OF ANY BUILDING MORE THAN 30 FEET IN HEIGHT.  
DUE TO THE EXISTING SITE CONDITIONS AT THE BUILDINGS ADJACENT STREETS, THERE IS NOT A 26 FEET ACCESS ROAD WIDTH AVAILABLE. THE DESIGN ALTERNATE WILL INSTALL A BREATHING AIR REILLING SYSTEM WHICH COMPLES WITH APPRO APPENDIX F. THE SYSTEM WILL INCLUDE (3) EXTERIOR FILL STATIONS AT GRADE LEVEL, AND DISTRIBUTION PIPING TO INTERIOR FILL STATIONS (1 PER FLOOR) LOCATED ON FLOORS 3, 5, 9, 12, 15, 18, 21, 24, 27, AND 30.
  - 5710 10.20.08 2007 OSCC, SECTION 1008.1.2 - PENETRATIONS  
ITEM 1: REQUIRES: PENETRATIONS AND OPENINGS THROUGH AN EXIST ENCLOSURE ARE PROHIBITED EXCEPT FOR REQUIRED EXIT DOORS, EQUIPMENT AND DUCTWORK NECESSARY FOR INDEPENDENT PRESSURIZATION, SPRINKLER PIPING, STANDPIPES, ELECTRICAL RACEWAY FOR FIRE DEPARTMENT COMMUNICATIONS, AND ELECTRICAL RACEWAY SERVING THE EXIST ENCLOSURE TERMINATING AT A STEEL BOX NOT EXCEEDING 16 SQUARE INCHES (0.010 SQUARE METERS). SUCH PENETRATIONS SHALL BE PROTECTED IN ACCORDANCE WITH SECTION 712. THESE SHALL BE PENETRATION OPENINGS, WHETHER PROTECTED OR NOT BETWEEN ADJACENT EXIST ENCLOSURES.  
APPROVED: THE INTAKE PLENUM FOR THE BUILDING ELEVATOR AND STAIRWELL PRESSURIZATION SYSTEM IS LOCATED ON THE GROUND FLOOR LEVEL, ALONG GRIDLINE 'C' BETWEEN GRIDS '5' AND '7'. THE PLENUM IS FULLY ENCLOSED BY 2-HOUR RATED CONSTRUCTION ON ALL SIDES. IT IS ACTING AS AN EXTENSION OF THE LOUVERS, FOR THE PURPOSE OF AIR INTAKE, AND IS ESSENTIALLY AN EXTERIOR AREA OF THE BUILDING. THE INTENT OF THE CODE IS MET IN THIS WAY, RATHER THAN PROVIDING RATED 2-HOUR PARTITIONS INSIDE THE PLENUM WHICH WOULD SEPARATE THE INTAKE AREA OF EACH FAN SYSTEM AND THE ASSOCIATED DUCTWORK.
  - 5976 02.11.09 2007 OSCC, SECTION 1008.1.2 - DOOR SWING  
ITEM 1: REQUIRED: DOORS SHALL SWING IN THE DIRECTION OF EGRESS TRAVEL WHERE SERVING AN OCCUPANT LOAD OF 50 OR MORE PERSONS OR A GROUP OCCUPANCY.  
APPROVED: TERRACE 615 AND 616 EACH HAVE AN OCCUPANCY LOAD OF 54, BASED ON A LOAD FACTOR OF ONE OCCUPANT PER 15 SQUARE FEET OF AREA. TWO EXIT ACCESS DOORS WILL BE PROVIDED AT EACH TERRACE, SWINGING OUTWARD.  
THE TERRACE EXIT ACCESS DOORS ARE PART OF THE CURTAIN WALL SYSTEM AND CAN'T BE PROVIDED TO SWING INWARD, IN THE DIRECTION OF EGRESS TRAVEL, WITHOUT COMPROMISING WEATHER TIGHTNESS.
  - 5976 02.11.09 2007 OSCC, SECTION 3202.2 - ENCROACHMENTS ABOVE GRADE AND BELOW 8 FEET IN HEIGHT  
ITEM 3: REQUIRED: ENCROACHMENTS INTO THE PUBLIC RIGHT-OF-WAY ABOVE GRADE AND BELOW 8 FEET IN HEIGHT SHALL BE PROHIBITED EXCEPT AS PROVIDED FOR IN SECTIONS 3202.2.1 THROUGH 3202.2.3. DOORS AND WINDOWS SHALL NOT OPEN OR PROJECT INTO THE PUBLIC RIGHT-OF-WAY.  
APPROVED: THE GAS REGULATOR ROOM, AT THE GROUND FLOOR LEVEL, IS A MECHANICAL CLOSET WITH A PAIR OF 4'-0" X 10'-4" HINGED ACCESS PANELS, OPENING OVER THE PUBLIC RIGHT-OF-WAY SIDEWALK ON SW PARK AVENUE. THE ACCESS PANELS WILL ONLY BE USED BY THE GAS UTILITY FOR READING AND SERVICING METER AND WILL BE LOCKED AT ALL TIMES. THE METERS HAVE BEEN LOCATED TO MEET ALL UTILITY AND CODE REQUIREMENTS. THE ROOM WILL BE INFREQUENTLY ACCESSED AND ONLY BY TRAINED PERSONNEL UNDER CONTROLLED CIRCUMSTANCES.
  - 6747 12.05.09 2007 OSCC, SECTION 1008.1.2 - DOOR SWING  
ITEM 1: REQUIRED: DOORS SHALL SWING IN THE DIRECTION OF EGRESS TRAVEL WHERE SERVING AN OCCUPANT LOAD OF 50 OR MORE PERSONS OR A GROUP OCCUPANCY.  
APPROVED: TERRACE 2512 AND TERRACE 2513, ON THE NORTH AND SOUTH SIDES OF LEVEL 25, EACH HAVE AN AREA OF 1000 SQUARE FEET. THE TERRACES WILL EACH HAVE AN OCCUPANT LOAD OF 127, BASED ON A LOAD FACTOR OF ONE OCCUPANT PER 15 SQUARE FEET OF AREA. TWO EXIT ACCESS DOORWAYS WILL BE PROVIDED AT EACH TERRACE, SWINGING OUTWARD TO THE BUILDING EXTERIOR. THESE DOORS WILL BE PROVIDED WITH LATCHING HARDWARE AS LBU OF PAIR HARDWARE AS THEY DO NOT SWING IN THE DIRECTION OF EGRESS TRAVEL. THE TERRACE EXIT ACCESS DOORS ARE PART OF THE CURTAIN WALL SYSTEM AND CAN'T BE PROVIDED TO SWING INWARD, IN THE DIRECTION OF EGRESS TRAVEL, WITHOUT COMPROMISING WEATHER TIGHTNESS. DOORS ARE TO BE OPERABLE FROM THE TERRACE SIDE WITHOUT THE USE OF A KEY OR SPECIAL KNOWLEDGE OR EFFORT.
  - 6818 01.20.10 2007 OSCC, SECTION 1008.1.2 - DOOR SWING  
ITEM 1: REQUIRED: TABLE 602 REQUIRES EXTERIOR WALL CONSTRUCTION SHALL BE ONE-HOUR FIRE-RESISTANT CONSTRUCTION WHERE FIRE SEPARATION DISTANCE IS LESS THAN 30' FROM PROPERTY LINE FOR TYPE B, M, AND S OCCUPANCIES.  
TABLE 602 REQUIRES THE EAST AND WEST EXTERIOR WALL OF THE TOWER SHALL BE ONE-HOUR FIRE-RESISTANT CONSTRUCTION DUE TO FIRE SEPARATION DISTANCE LESS THAN 30' FROM PROPERTY LINE (CENTERLINE OF SW PARK AND SW 9TH AVENUES RESPECTIVELY).  
APPROVED: THE EAST AND WEST WALLS OF THE PROPOSED BUILDING ARE 25' FROM THE CENTERLINE OF THE ADJACENT R.O.W. THE EXTERIOR SKIN SYSTEM FOR THE BUILDING CONSISTS PRIMARILY OF AN ALUMINUM FRAMED CURTAINWALL SYSTEM WITH INFILL PANELS OF VISION GLASS, SPANDEL GLASS, AND ALUMINUM PANEL. THIS SYSTEM REPRESENTS THE LATEST TECHNOLOGY FOR EXTERIOR SKIN SYSTEMS FOR HIGH-RISE CONSTRUCTION AS RELATED TO WEATHER PROTECTION, AND STRUCTURAL INTEGRITY IN RESISTING THE HIGH WIND LOADS AND SEISMIC FORCES OCCURRING ON THIS BUILDING. HOWEVER, THESE CURTAINWALL SYSTEMS ALONE DO NOT PROVIDE A FIRE RATED ASSEMBLY. THE BUILDING IS DESIGNED AS A SPECULATIVE COMMERCIAL OFFICE BUILDING THAT WILL ULTIMATELY BE OCCUPIED BY MULTIPLE TENANTS, YET TO BE DETERMINED, AND THUS INTERIOR FINISH SYSTEMS ARE NOT A PART OF THIS BUILDING PERMIT. THE BUILDING IS FULLY SPRINKLERED. THE EAST AND WEST WALLS OF THE PROPOSED BUILDING ABOUT SW PARK AND SW 9TH AVENUES RESPECTIVELY, OSCC TABLE 602 ALLOWS THE FIRE SEPARATION TO BE TAKEN FROM THE CENTERLINE OF THE R.O.W. IN THESE CONDITIONS, THE REALITY IS THAT THIS BUILDING AND THE STRUCTURES ON THE OPPOSITE SIDE OF THE STREETS CAN NEVER ENCRACH INTO THE R.O.W., THUS MAINTAINING A TRUE FIRE SEPARATION DISTANCE OF 50' CLEAR, A DISTANCE THAT NO LONGER REQUIRES THE FIRE RATED CONSTRUCTION. IN ADDITION, OSCC SECTION 704 AND TABLE 704.8 ALLOW FOR UNPROTECTED OPENINGS FOR 100% OF THE EXTERIOR WALL WHERE FIRE SEPARATION DISTANCE IS GREATER THAN 20 FEET. ROOMS & TOWER CURTAINWALLS WITH FIRE RATED CONSTRUCTION. THESE WALLS ARE THE EXTERIOR CURTAINWALL SKIN SYSTEM COMPRISED OF INFILL PANELS OF GLASS OR METAL PANEL GLAZED INTO THE SYSTEM. METAL FRAMED WALL ASSEMBLIES ON THE PODIUM ARE ONE HOUR RATED AND IN COMPLIANCE WITH THE OSCC.

**tva architects**  
ROBERT THOMPSON, FAIA  
TVA Architects, LLC  
620 SW Sixth Ave, Suite 1500  
Portland, Oregon 97204  
Phone 503.220.0668



**park avenue west tower.2**  
TMT DEVELOPMENT  
portland, oregon  
revisions:  
REV 1 - 2006.12.07  
REV 2 - 2010.01.20

10.01.09  
Permit Set  
CODE SUMMARY  
project: 9108

G003

ABOVE GRADE PERMIT SET

FIRE AND LIFE SAFETY SCHEDULE LOWER LEVEL 1									
LEVEL	NAME	AREA	FUNCTION OF SPACE	LOAD FACTOR	OCCUPANCY LOAD	EXIT WIDTH (STAIR)	EXIT REQUIRED	EXIT PROVIDED	OCCUPANCY CLASSIFICATION
LL 1	L101	11,882 SF	PARKING	200 GR	80	15.0	2	2	2-B-2
	L102	LOCKER LOBBY							
	L103	WOMENS LOCKER ROOM	172 SF	GR	4	0.8	1	1	1-B-2
	L104	WOMENS SHOWER	238 SF	GR	8	1.6	1	1	1-B-2
	L105	MENS SHOWER	208 SF	GR	6	1.2	1	1	1-B-2
	L106	MENS LOCKER ROOM	181 SF	GR	4	0.8	1	1	1-B-2
	L107	JANITORS CLOSET	41 SF	GR	1	0.2	1	1	1-B-2
	L108								
	L109	LONG TERM BICYCLE PARKING	823 SF	GR	3	0.6	1	1	1-B-2
	L110	WATER EQUIPMENT ROOM	285 SF	MECHANICAL	300 GR	1	0.2	1	1-B-2
	L111	ELECTRICAL ROOM	400 SF	MECHANICAL	300 GR	2	0.4	1	1-B-2
	L112	TELECOM ROOM	275 SF	MECHANICAL	300 GR	1	0.2	1	1-B-2
	L113								
	L114	GENERATOR ROOM	565 SF	MECHANICAL	300 GR	2	0.4	1	1-B-2
	L115	FACILITIES MGMT OFFICE	377 SF	BUSINESS AREA	100 GR	4	0.8	1	1-B-2
	L117	STORAGE	124 SF	STORAGE AREA	300 GR	1	0.2	1	1-B-2
	L118	ELEV LOBBY							
	L119	TOILET							
	L120	VESTIBULE							
	L121	STAIR #1							
	L122	BICYCLE STORAGE	210 SF	STORAGE AREA	300 GR	1	0.2	1	1-B-2
	L123								
	L124	HALL							
	L125	VESTIBULE							
	L126	STAIR #2							
	L128	ELECTRICAL	38 SF	MECHANICAL	300 GR	1	0.2	1	1-B-2
	L129	BOOTH							
	L130	ADA BOOTH							
TOTALS		19,862 SF				118	22.0	2	2

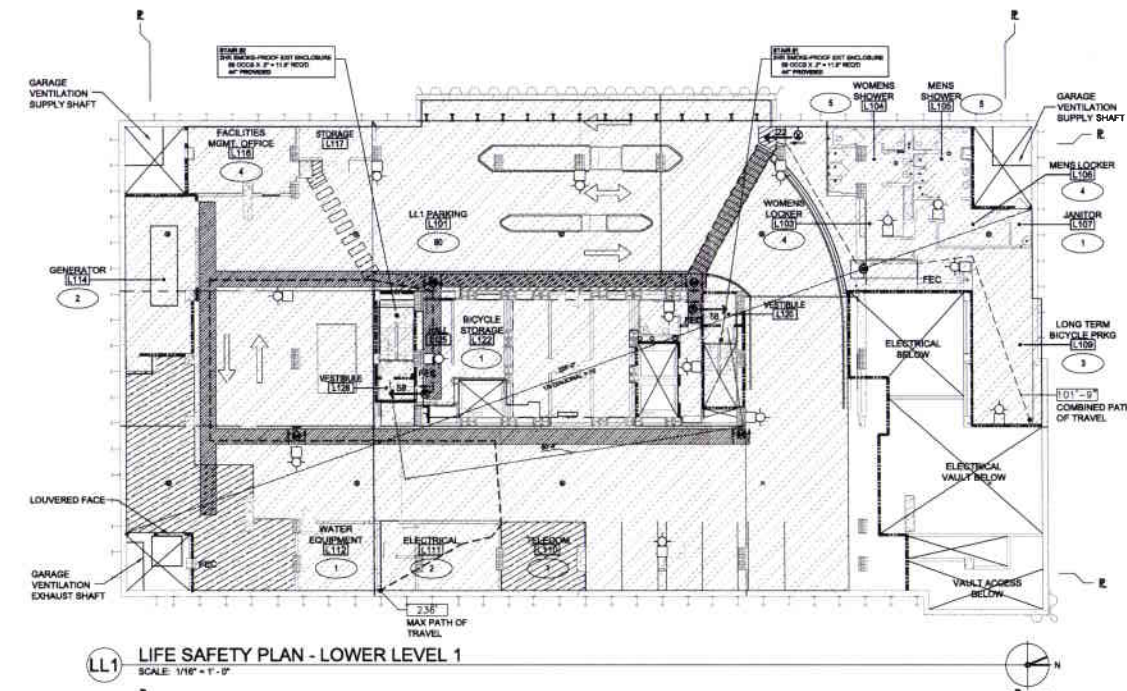
PARKING STALLS: LL1				
STALL TYPE	RETAIL	OFFICE	TOTAL	
CARPOOL	0	0	0	
HYBRID	0	0	0	
ACCESSIBLE	0	0	0	
VAN ACCESSIBLE	0	0	0	
STANDARD STALL	0	8	8	
TOTAL			8	

FIRE AND LIFE SAFETY SCHEDULE LOWER LEVEL 2									
LEVEL	NAME	AREA	FUNCTION OF SPACE	LOAD FACTOR	OCCUPANCY LOAD	EXIT WIDTH (STAIR)	EXIT REQUIRED	EXIT PROVIDED	OCCUPANCY CLASSIFICATION
LL 2	L201	17,206 SF	PARKING	200 GR	80	17.0	2	2	2-B-2
	L202	EQUIPMENT	100 SF	MECHANICAL	300 GR	1	0.2	1	1-B-2
	L203	STORAGE	1478 SF	STORAGE AREA	300 GR	2	0.4	1	1-B-2
	L204	ELECTRICAL	390 SF	MECHANICAL	300 GR	2	0.4	1	1-B-2
	L205	VAULT	996 SF	MECHANICAL	300 GR	4	0.8	1	1-B-2
	L206	VAULT ACCESS	358 SF	MECHANICAL	300 GR	1	0.2	1	1-B-2
	L207								
	L208	STORAGE	70 SF	STORAGE AREA	300 GR	1	0.2	1	1-B-2
	L209								
	L210	ELEV LOBBY							
	L211	VESTIBULE							
	L212	STAIR #1							
	L213								
	L214	EMERGENCY ELECTRICAL ROOM	281 SF	MECHANICAL	300 GR	1	0.2	1	2-B-2
	L215	STORAGE	265 SF	STORAGE AREA	300 GR	1	0.2	1	1-B-2
	L216	HALL							
	L217	VESTIBULE							
	L218	STAIR #2							
	L219	STORAGE	210 SF	STORAGE AREA	300 GR	1	0.2	1	1-B-2
	L220	HALL							
TOTALS		21,781 SF				194	20.8	2	2

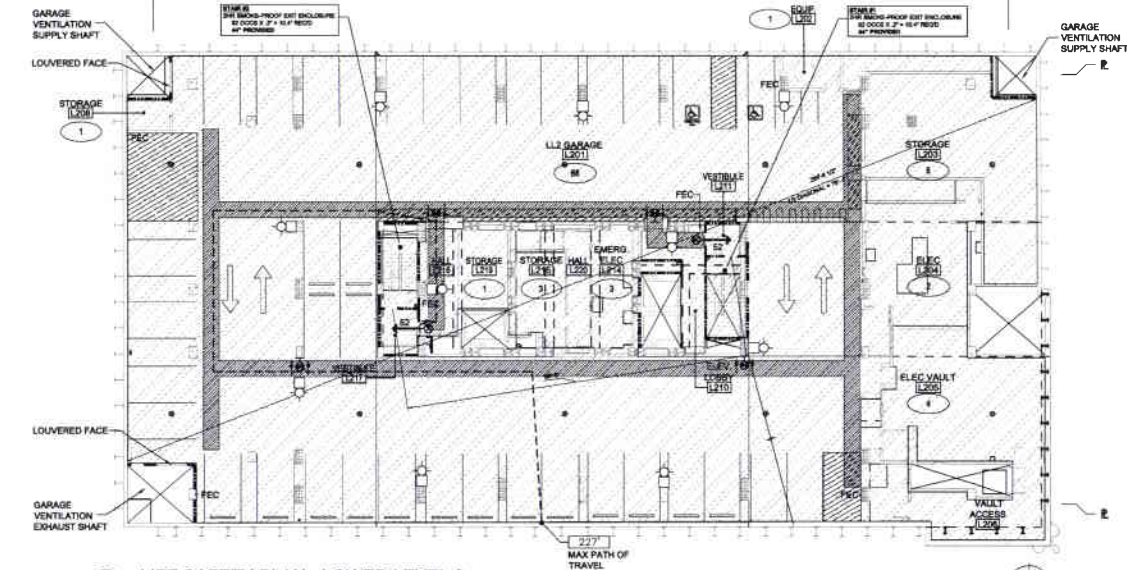
PARKING STALLS: LL2				
STALL TYPE	RETAIL	OFFICE	TOTAL	
CARPOOL	0	4	4	
HYBRID	0	0	0	
ACCESSIBLE	0	5	5	
VAN ACCESSIBLE	0	2	2	
STANDARD STALL	10	12	22	
TOTAL			33	

FIRE AND LIFE SAFETY SCHEDULE LOWER LEVEL 3									
LEVEL	NAME	AREA	FUNCTION OF SPACE	LOAD FACTOR	OCCUPANCY LOAD	EXIT WIDTH (STAIR)	EXIT REQUIRED	EXIT PROVIDED	OCCUPANCY CLASSIFICATION
LL 3	L301	20,782 SF	PARKING	200 GR	104	21.0	2	2	2-B-2
	L302	STORAGE	70 SF	STORAGE AREA	300 GR	1	0.2	1	1-B-2
	L304	ME EXHAUST	80 SF	STORAGE AREA	300 GR	1	0.2	1	1-B-2
	L305	STORAGE	70 SF	STORAGE AREA	300 GR	1	0.2	1	1-B-2
	L306	NOT USED							
	L307	ELEV LOBBY							
	L308	VESTIBULE							
	L309	STAIR #1							
	L310	STORAGE	210 SF	STORAGE AREA	300 GR	1	0.2	1	1-B-2
	L311	RECYCLING ROOM	748 SF	STORAGE AREA	300 GR	3	0.6	1	1-B-2
	L312	HALL							
	L313	VESTIBULE							
	L314	STAIR #2							
TOTALS		21,870 SF				111	22.2	2	2

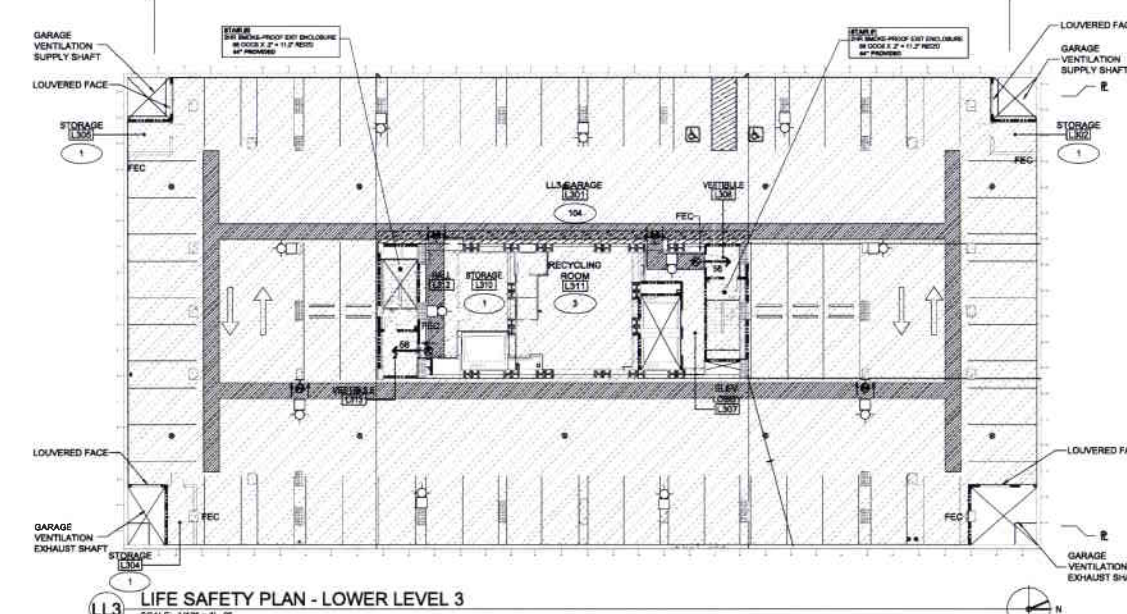
PARKING STALLS: LL3				
STALL TYPE	RETAIL	OFFICE	TOTAL	
CARPOOL	0	8	8	
HYBRID	0	8	8	
ACCESSIBLE	0	0	0	
VAN ACCESSIBLE	0	0	0	
STANDARD STALL	0	41	41	
TOTAL			56	



LL1 LIFE SAFETY PLAN - LOWER LEVEL 1  
SCALE: 1/16" = 1'-0"



LL2 LIFE SAFETY PLAN - LOWER LEVEL 2  
SCALE: 1/16" = 1'-0"



LL3 LIFE SAFETY PLAN - LOWER LEVEL 3  
SCALE: 1/16" = 1'-0"

**OCCUPANCY CLASSIFICATION TYPES**

- BUSINESS GROUP B
- MERCANTILE GROUP M
- ASSEMBLY GROUP A-3
- STORAGE GROUP S-2

**FIRE RESISTIVE - SEPARATION**

- 1 HOUR FIRE PARTITION
- 1 HOUR FIRE BARRIER
- 2 HOUR WALL
- 3 HOUR WALL
- 4 HOUR WALL @ PROPERTY LINE

**LEGEND - LIFE SAFETY**

- EXIT PATH
- W EGRESS LIGHTING ON EMERGENCY POWER
- 1) FOOT-CANDLE SHALL BE MAINTAINED AT FLOOR LEVEL THROUGHOUT EXIT PATH
- 8\"/>

**tva architects**

ROBERT THOMPSON, FAIA  
TVA Architects, Inc.  
520 SW Sixth Ave, Suite 1500  
Portland, Oregon 97204  
Phone 503.220.0668



**park avenue west tower.2**  
TMT DEVELOPMENT  
portland, oregon

10.01.09  
Permit Set

fire & life safety  
111-113  
project: 9108

**G004**  
ABOVE GRADE PERMIT SET

FIRE AND LIFE SAFETY SCHEDULE LOWER LEVEL 4									
LEVEL	NAME	AREA	FUNCTION OF SPACE	LOAD FACTOR	OCCUPANCY LOAD	EXIT WIDTH (STAIR)	EXIT REQUIRED	EXIT PROVIDED	OCCUPANCY CLASSIFICATION
LL4	L401	LL4 GARAGE	20,774 SF PARKING	200 GR	104	20.8	2	2	2-2
	L402	STORAGE	70 SF STORAGE AREA	300 GR	1	0.2	1	1	1-2
	L403	STORAGE	80 SF STORAGE AREA	300 GR	1	0.2	1	1	1-2
	L404	STORAGE	80 SF STORAGE AREA	300 GR	1	0.2	1	1	1-2
	L405	STORAGE	70 SF STORAGE AREA	300 GR	1	0.2	1	1	1-2
	L406	NOT USED							
	L407	ELEV LOBBY							2-2
	L408	VESTIBULE							2-2
	L409	STAIR #1							2-2
	L410	STORAGE	210 SF STORAGE AREA	300 GR	1	0.2	1	1	1-2
	L411	FIRE PUMP CONTROL ROOM	348 SF MECHANICAL	300 GR	2	0.4	1	1	1-2
	L412	HALL							2-2
	L413	VESTIBULE							2-2
	L414	STAIR #2							2-2
TOTALS:		21,620 SF			111	22.2	2	2	

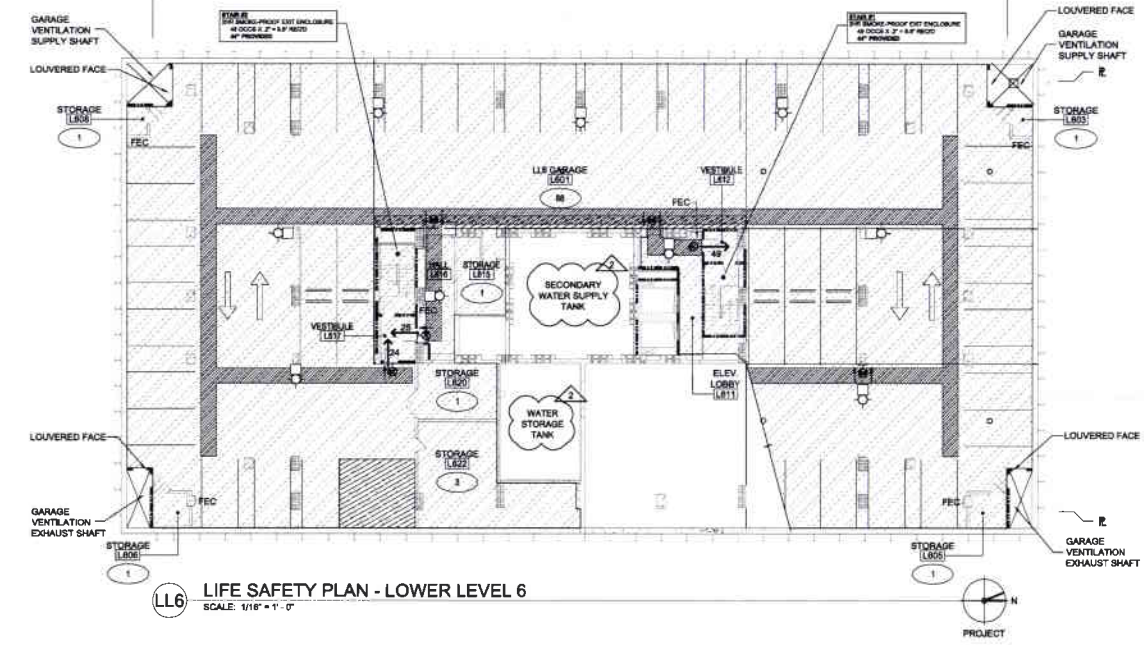
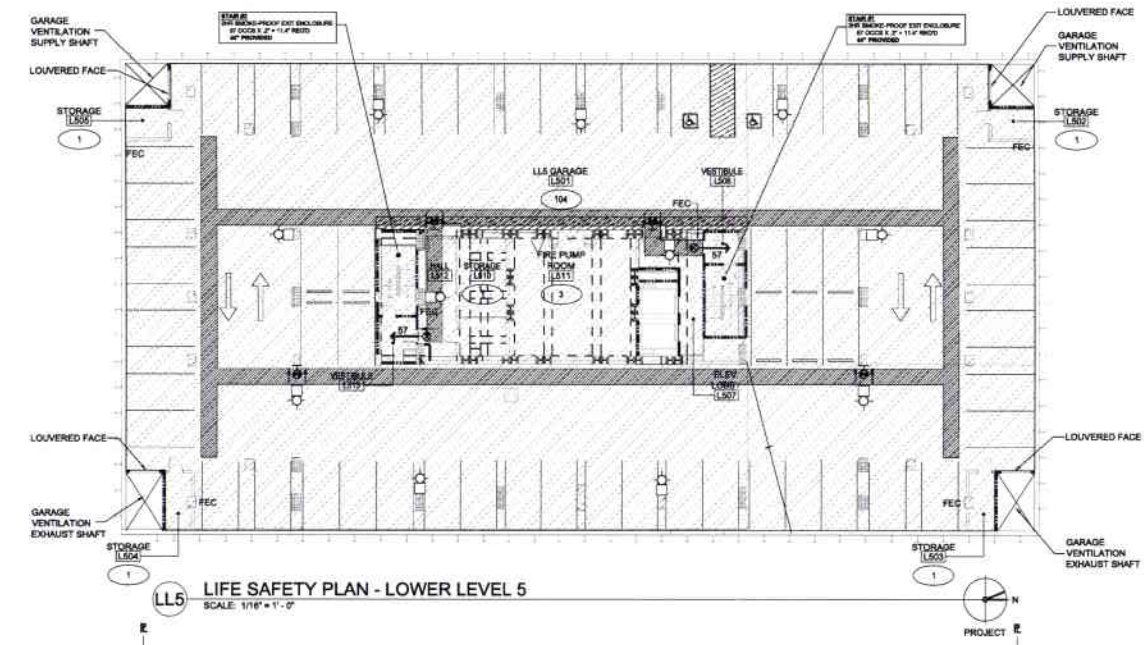
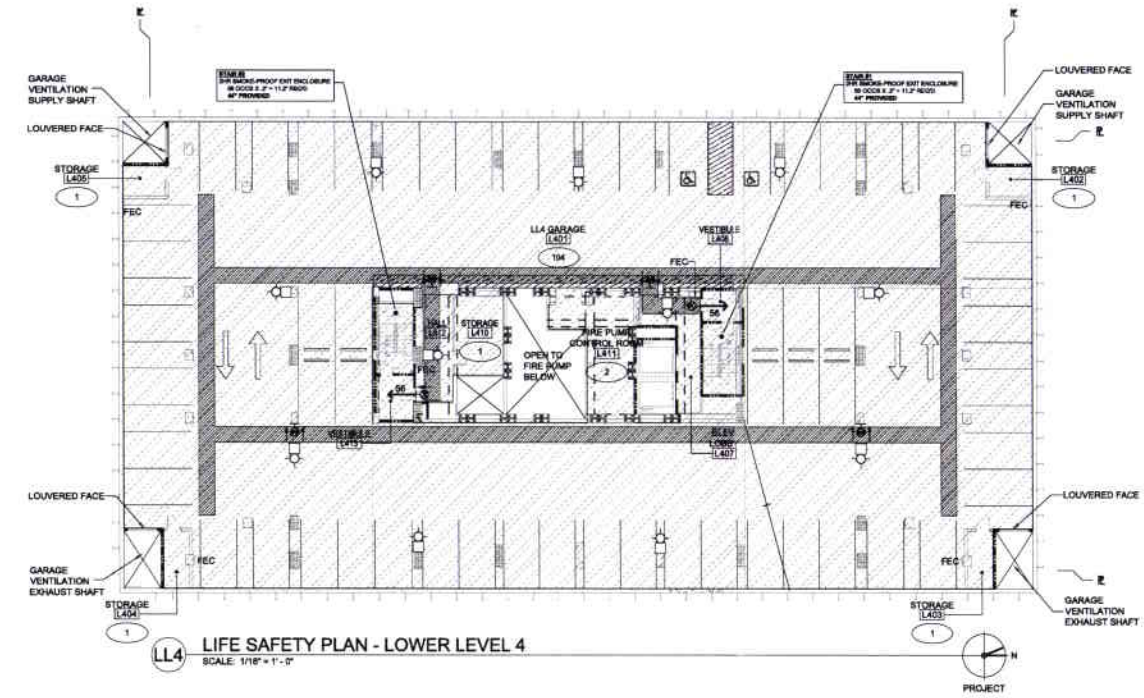
PARKING STALLS: LL4				
STALL TYPE	RETAIL	OFFICE	COND	TOTAL
CARPOOL	0	0	0	0
HYBRID	0	0	0	0
REG. ACCESSIBLE	0	0	0	0
VAN ACCESSIBLE	0	0	0	0
STANDARD STALL	0	57	0	57
TOTAL	0	57	0	57

FIRE AND LIFE SAFETY SCHEDULE LOWER LEVEL 5									
LEVEL	NAME	AREA	FUNCTION OF SPACE	LOAD FACTOR	OCCUPANCY LOAD	EXIT WIDTH (STAIR)	EXIT REQUIRED	EXIT PROVIDED	OCCUPANCY CLASSIFICATION
LL5	L501	LL5 GARAGE	21,035 SF PARKING	200 GR	106	21.2	2	2	2-2
	L502	STORAGE	70 SF STORAGE AREA	300 GR	1	0.2	1	1	1-2
	L503	STORAGE	80 SF STORAGE AREA	300 GR	1	0.2	1	1	1-2
	L504	STORAGE	80 SF STORAGE AREA	300 GR	1	0.2	1	1	1-2
	L505	STORAGE	70 SF STORAGE AREA	300 GR	1	0.2	1	1	1-2
	L506	NOT USED							
	L507	ELEV LOBBY							2-2
	L508	VESTIBULE							2-2
	L509	STAIR #1							2-2
	L510	STORAGE	210 SF STORAGE AREA	300 GR	1	0.2	1	1	1-2
	L511	FIRE PUMP ROOM	797 SF MECHANICAL	300 GR	3	0.6	1	1	1-2
	L512	HALL							2-2
	L513	VESTIBULE							2-2
	L514	STAIR #2							2-2
TOTALS:		22,342 SF			114	22.6	2	2	

PARKING STALLS: LL5				
STALL TYPE	RETAIL	OFFICE	COND	TOTAL
CARPOOL	0	0	0	0
HYBRID	0	0	5	5
REG. ACCESSIBLE	0	0	3	3
VAN ACCESSIBLE	0	0	0	0
STANDARD STALL	0	0	42	42
TOTAL	0	0	47	47

FIRE AND LIFE SAFETY SCHEDULE LOWER LEVEL 6									
LEVEL	NAME	AREA	FUNCTION OF SPACE	LOAD FACTOR	OCCUPANCY LOAD	EXIT WIDTH (STAIR)	EXIT REQUIRED	EXIT PROVIDED	OCCUPANCY CLASSIFICATION
LL6	L601	LL6 GARAGE	17,566 SF PARKING	200 GR	88	17.6	2	2	2-2
	L602	STORAGE	32 SF STORAGE AREA	300 GR	1	0.2	1	1	1-2
	L603	STORAGE	70 SF STORAGE AREA	300 GR	1	0.2	1	1	1-2
	L604	STORAGE	70 SF STORAGE AREA	300 GR	1	0.2	1	1	1-2
	L605	STORAGE	32 SF STORAGE AREA	300 GR	1	0.2	1	1	1-2
	L606	NOT USED							
	L607	ELEV LOBBY							2-2
	L608	VESTIBULE							2-2
	L609	STAIR #1							2-2
	L610	STORAGE	210 SF STORAGE AREA	300 GR	1	0.2	1	1	1-2
	L611	HALL							2-2
	L612	VESTIBULE							2-2
	L613	STAIR #2							2-2
	L614	STORAGE	241 SF STORAGE AREA	300 GR	1	0.2	1	1	1-2
	L615	STORAGE	943 SF STORAGE AREA	300 GR	3	0.6	1	1	1-2
TOTALS:		18,886 SF			97	19.4	2	2	

PARKING STALLS: LL6				
STALL TYPE	RETAIL	OFFICE	COND	TOTAL
CARPOOL	0	0	0	0
HYBRID	0	0	0	0
REG. ACCESSIBLE	0	0	0	0
VAN ACCESSIBLE	0	0	0	0
STANDARD STALL	0	0	47	47
TOTAL	0	0	47	47



**OCCUPANCY CLASSIFICATION TYPES**

- BUSINESS GROUP B
- MERCANTILE GROUP M
- ASSEMBLY GROUP A-3
- STORAGE GROUP S-2

**FIRE RESISTIVE - SEPARATION**

- 1 HOUR FIRE PARTITION
- 1 HOUR FIRE BARRIER
- 2 HOUR WALL
- 3 HOUR WALL
- 4 HOUR WALL @ PROPERTY LINE

**LEGEND - LIFE SAFETY**

- EXIT PATH
- W/ EGRESS LIGHTING ON EMERGENCY POWER
- 1) FOOT-CANDLE SHALL BE MAINTAINED AT FLOOR LEVEL THROUGHOUT EXIT PATH
- 8'-2" MIN. VERTICAL ACCESSIBLE DRIVE CLEARANCE AREA
- PRIVATE BALCONY
- COVERED AREA INCLUDED IN SQUARE FOOTAGE
- OCCUPANT LOAD
- MAXIMUM TRAVEL DISTANCE
- EXIT TO PUBLIC WAY
- 12 DIRECTION OF EGRESS + OCCUPANT NUMBER
- INTERNALLY ILLUMINATED EXIT SIGNAGE, COMPLIANT WITH OSC SECTION 1011
- INTERNALLY ILLUMINATED DIRECTIONAL EXIT SIGNAGE, COMPLIANT WITH OSC 1011, ARROWS INDICATE DIRECTION
- FEC FIRE EXTINGUISHER TYPE 2-A 10-B-C
- FEC FIRE EXTINGUISHER CABINET
- EXIT TACTILE EXIT SIGN, COMPLIANT WITH OSC 1011.3, STATING "EXIT STAIR"
- FIRE ALARM STROBE
- FIRE ALARM STROBE-CILING MOUNTED

**tva architects**  
ROBERT THOMPSON, FAIA  
TVA Architects, Inc.  
920 SW 50th Ave, Suite 1500  
Portland, Oregon 97204  
Phone 503.220.0668



**park avenue west tower.2**  
TMT DEVELOPMENT  
portland, oregon

10.01.09  
Permit Set  
fire & life safety  
14-116  
project: 9108  
**G005**  
ABOVE GRADE PERMIT SET

FIRE AND LIFE SAFETY SCHEDULE AT GROUND FLOOR										
LEVEL	ROOM #	ROOM NAME	AREA	FUNCTION OF SPACE	LOAD FACTOR	OCCUPANCY LOAD	EXIT WIDTH	EXIT REQUIRED	EXIT PROVIDED	OCCUPANCY CLASSIFICATION
GF	100	LOBBY	2882 SF	LOBBY	15 NT	152	22.4	2	3	B
	101	OFFICE ELEVATOR LOBBY								B
	102	RECEPTION								B
	103	RETAIL	331 SF	MERCANTILE / GRADE FL	30 GR	12	1.4	1	1	M
	104	STAIR #2								M
	105	ELEC / DATA								M
	106	SERVICE HALL								M
	107	PARKING ELEVATOR LOBBY								B
	108	TOILET								B
	109	FIRE COMMAND CENTER	128 SF	FIRE COMMAND CENTER	100	2	0.18	1	1	B
	110	STAIR #1								M
	111	RETAIL HALL								M
	112	RETAIL AREA	4,252 SF	MERCANTILE / GRADE FL	30 GR	142	21.3	2	2	M
	113	PARKING RAMP								B-2
	114	LOADING DOCK	2,010 SF	LOADING DOCK	300 GR	7	1.06	1	1	M
	115	GAS REGULATOR ROOM								M
	116	RETAIL AREA	5,574 SF	MERCANTILE - GRADE FL	30 GR	196	27.8	2	2	M
		TOTALS:	16,184 SF			201	75.15'	3	3	

**PLUMBING FIXTURE COUNT**

GROUP M: RETAIL FIXTURES TO BE PROVIDED WITH TENANT BUILD OUT.

GROUP B: 5 EMPLOYEES PER SECTION 2902.3  
1 UNISEX REQ'D  
1 UNISEX PROVIDED

FIRE AND LIFE SAFETY SCHEDULE FLOOR 2										
LEVEL	ROOM #	NAME	AREA	FUNCTION OF SPACE	LOAD FACTOR	OCCUPANCY LOAD	EXIT WIDTH	EXIT REQUIRED	EXIT PROVIDED	OCCUPANCY CLASSIFICATION
FL 2	201	HALL								M
	202	HALL								M
	203	ELEC / DATA								M
	204	STAIR #2								M
	205	MAIL								M
	206	LOBBY								M
	207	HALL								M
	208	ELEV. CONTROL								M
	209	NOT USER								M
	210	STAIR #1								M
	211	RETAIL	17,848 SF	RETAIL - AREA ON OTHER FLS.	30 GR	206	89.9'	2	2	M
		TOTALS:	17,848 SF			206	89.9'	2	2	

**PLUMBING FIXTURE COUNT**

GROUP M: RETAIL FIXTURES TO BE PROVIDED WITH TENANT BUILD OUT.

FIRE AND LIFE SAFETY SCHEDULE FLOOR 3										
LEVEL	ROOM #	NAME	NUMBER	AREA	FUNCTION OF SPACE	LOAD FACTOR	OCCUPANCY LOAD	EXIT WIDTH	EXITS REQUIRED / PROVIDED	OCCUPANCY CLASSIFICATION
FL 3	301	LOBBY								B
	302	HALL								B
	303	MEDIA		222 SF	MECHANICAL	300 GR	1	1	1	B
	304	STAIR #2								B
	305	HALL								B
	306	WOMENS								B
	307	MENS								B
	308	ELEC / DATA								B
	309	JANITORS CLOSET								B
	310	STAIR #1								B
	311	CORRIDOR								B
	312	CORRIDOR								B
	313	CORRIDOR								B
	314	WOMENS LOCKER ROOM		854 SF	LOCKER ROOM	50 GR	19.27"	1	1	B
	315	MENS LOCKER ROOM		850 SF	LOCKER ROOM	50 GR	19.28"	1	1	B
	316	EXERCISE ROOM		1,818 SF	EXERCISE ROOM	30 GR	37.58"	1	2	B
	317	OFFICE		10,881 SF	BUSINESS AREA	100 GR	109.16 3/4"	2	2	B
		TOTALS:		14,723 SF			184.38 1/2"	2	2	

**PLUMBING FIXTURE COUNT**

GROUP B OFFICE: 10,881 SF / 200 = 55 OCCS PER TABLE 204  
MALE: 2 WC & 1 LAV REQ'D  
FEMALE: 2 WC & 1 LAV REQ'D

GROUP A GYMNASIUM: 3,800 SF / 50 = 120 OCCS PER TABLE 204  
MALE: 2 WC & 2 LAV REQ'D  
FEMALE: 2 WC & 2 LAV REQ'D

**OCCUPANCY CLASSIFICATION TYPES**

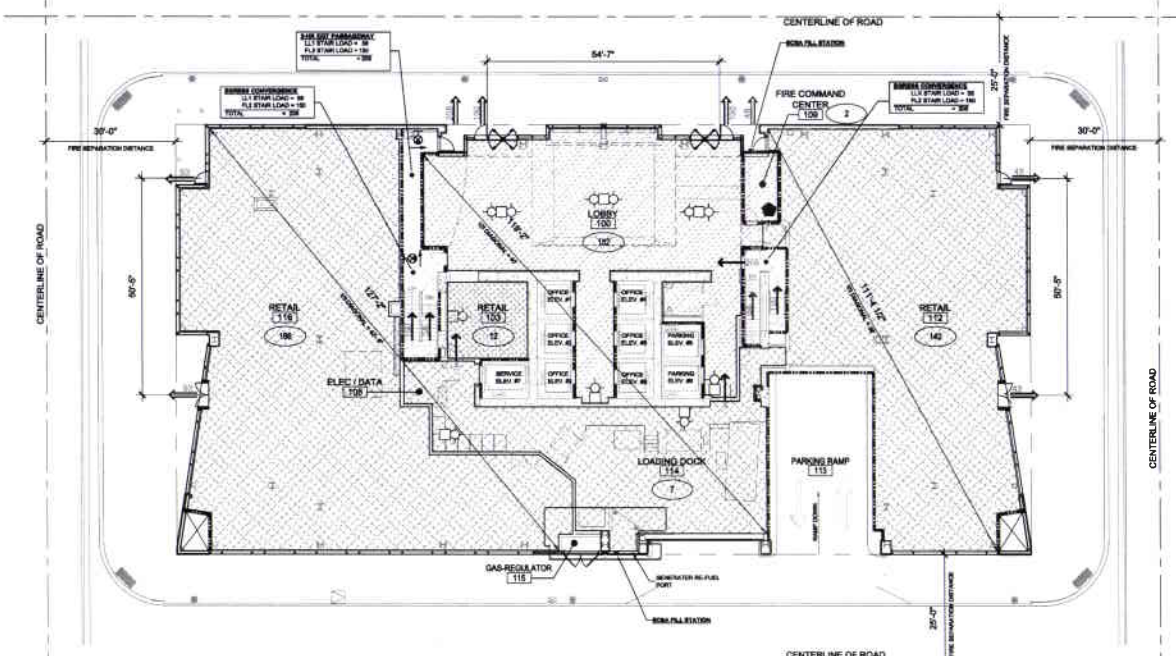
- BUSINESS GROUP B
- MERCANTILE GROUP M
- ASSEMBLY GROUP A-3
- STORAGE GROUP S-2

**FIRE RESISTIVE - SEPARATION**

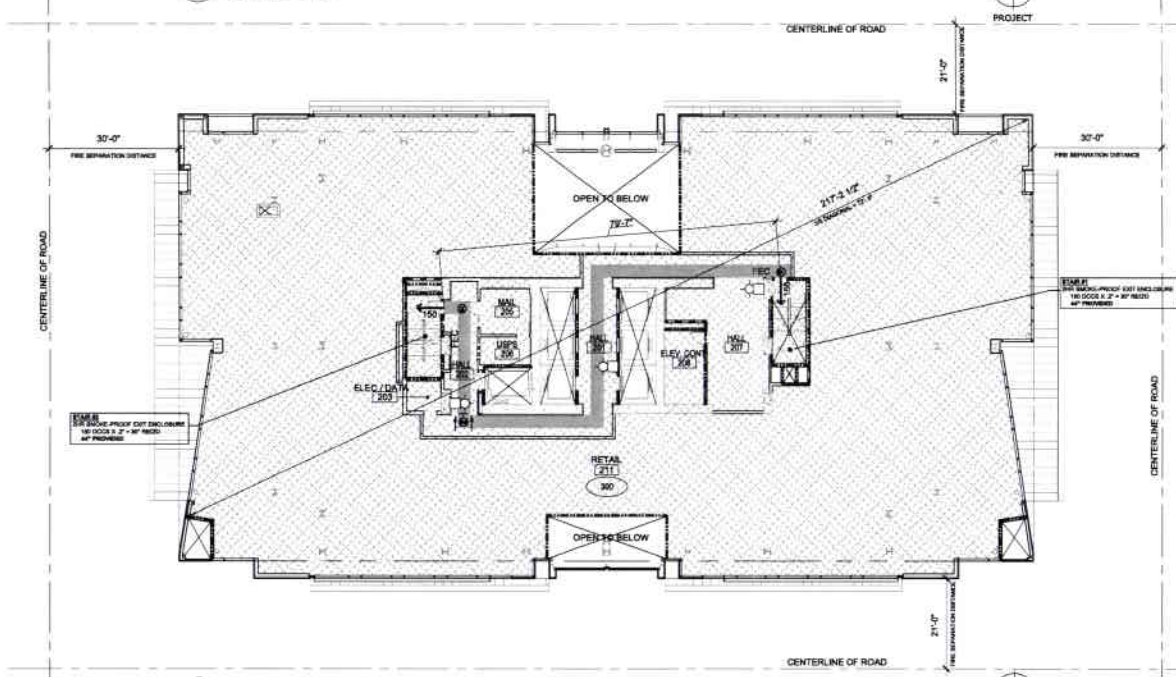
- 1 HOUR FIRE PARTITION
- 1 HOUR FIRE BARRIER
- 2 HOUR WALL
- 3 HOUR WALL
- 4 HOUR WALL

**LEGEND - LIFE SAFETY**

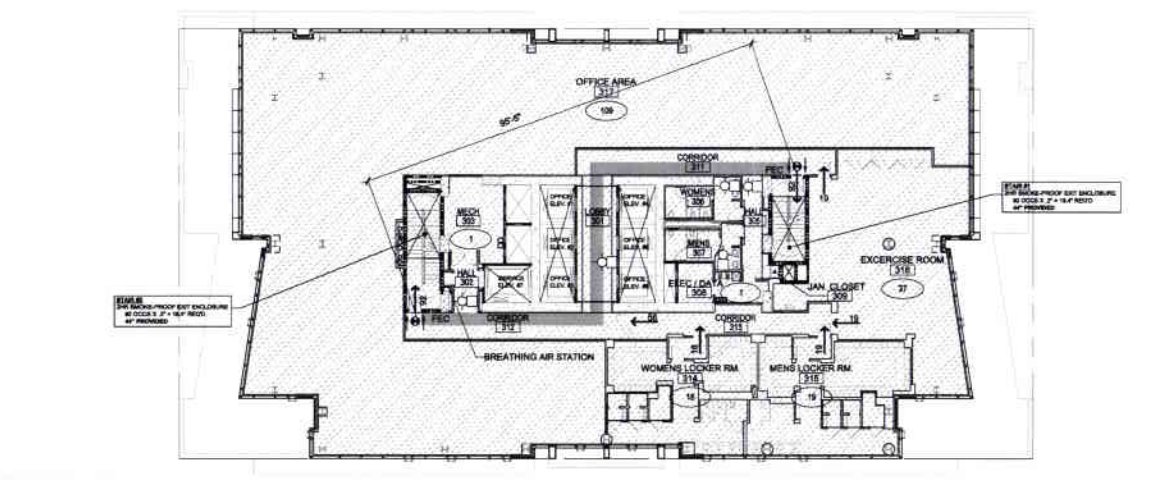
- EXIT PATH WITH EGRESS LIGHTING ON EMERGENCY POWER
- 8'-2" MIN. VERTICAL ACCESSIBLE DRIVE CLEARANCE AREA
- OCCUPANT LOAD
- MAXIMUM TRAVEL DISTANCE
- EXIT TO PUBLIC WAY
- DIRECTION OF EGRESS + OCCUPANT NUMBER
- INTERNALLY ILLUMINATED EXIT SIGNAGE, COMPLIANT WITH OESC SECTION 1011.
- INTERNALLY ILLUMINATED DIRECTIONAL EXIT SIGNAGE, COMPLIANT WITH OESC 1011. ARROWS INDICATE DIRECTION
- FEC FIRE EXTINGUISHER TYPE 2A 10-B-C
- FEC FIRE EXTINGUISHER CABINET
- TACTILE EXIT SIGN, COMPLIANT WITH OESC 1011.3, STATING "EXIT STAIR"
- FIRE ALARM STROBE
- FIRE ALARM STROBE - CEILING MOUNTED



1 LIFE SAFETY PLAN - GROUND FLOOR  
SCALE: 1/16" = 1' - 0"



2 LIFE SAFETY PLAN - LEVEL TWO  
SCALE: 1/16" = 1' - 0"



3 LIFE SAFETY PLAN - LEVEL THREE  
SCALE: 1/16" = 1' - 0"

tva architects

ROBERT THOMPSON, FAIA  
TVA Architects, Inc.  
920 SW Sixth Ave, Suite 1500  
Portland, Oregon 97204  
Phone 503.220.0668



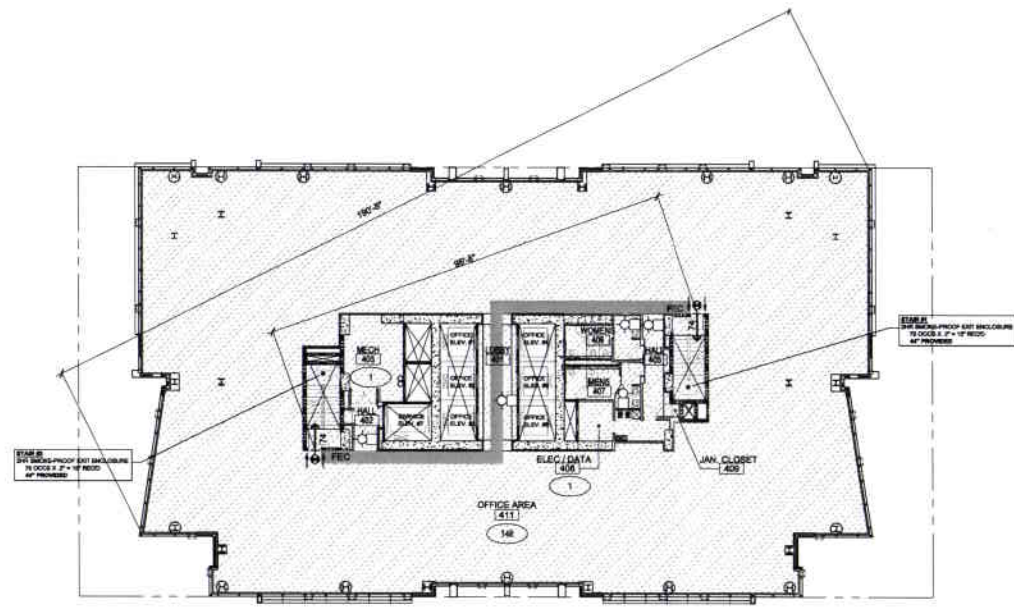
park avenue west tower.2  
TMT DEVELOPMENT  
portland, oregon

10.01.09  
Permit Set  
fire & life safety  
of, fl2, fl3  
project: 9108

G006  
ABOVE GRADE PERMIT SET

FIRE AND LIFE SAFETY SCHEDULE FLOORS 4-5										
LEVEL	ROOM NUMBER	NAME	AREA	FUNCTION OF SPACE	LOAD FACTOR	OCCUPANCY LOAD	EXIT WIDTH (STAIR)	EXIT REQUIRED	EXIT PROVIDED	OCCUPANCY CLASSIFICATION
FL 4-5	401	ELEVATOR LOBBY						1	1B	
	402	HALL						1	1B	
	403	MECH	241 SF MECHANICAL		300 GR		1	0.18"	1	1B
	404	STAIR #2								
	405	HALL								
	406	WOMENS								
	407	MENS								
	408	ELEC/DATA	194 SF MECHANICAL		300 GR		1	0.18"	1	1B
	409	JANITOR CLOSET								
	410	STAIR #1								
	411	OFFICE	14,864 SF BUSINESS AREA		100 GR		148	21.0"	2	2B
TOTALS:			14,864 SF					148/21.0"	2	2

**PLUMBING FIXTURE COUNT**  
 GROUP B OFFICE: 14,864 SF/200 = 75 OCCS  
 PER TABLE 20A  
 MALE: 3 WC & 2 LAV REQ'D  
 FEMALE: 3 WC & 2 LAV REQ'D

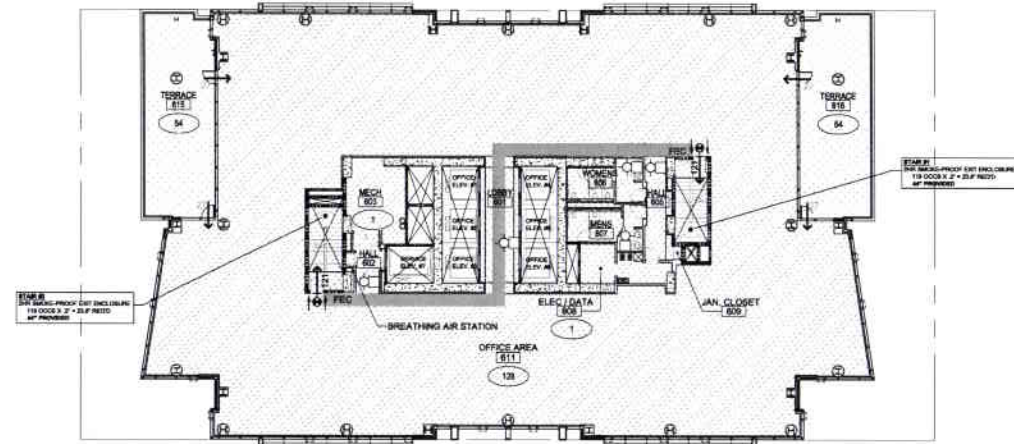


4 LIFE SAFETY PLAN - LEVELS 4 & 5  
 SCALE: 1/16" = 1' - 0"

FIRE AND LIFE SAFETY SCHEDULE FLOOR 6										
LEVEL	ROOM NUMBER	NAME	AREA	FUNCTION OF SPACE	LOAD FACTOR	OCCUPANCY LOAD	EXIT WIDTH (STAIR)	EXIT REQUIRED	EXIT PROVIDED	OCCUPANCY CLASSIFICATION
FL 6	601	ELEVATOR LOBBY						1	1B	
	602	HALL								
	603	MECH	241 SF MECHANICAL		300 GR		1	0.2	1	1B
	604	STAIR #2								
	605	HALL								
	606	WOMENS								
	607	MENS								
	608	ELEC/DATA	194 SF MECHANICAL		300 GR		1	0.2	1	1B
	609	JANITOR CLOSET								
	610	STAIR #1								
	611	OFFICE	12,741 SF BUSINESS AREA		100 GR		128	27.6"	2	2B
612	TERRACE	787 SF ASSEMBLY/CONCENTRATED SEATING		54	10.8			2	2A-3	
613	TERRACE	797 SF ASSEMBLY/CONCENTRATED SEATING		54	10.8			2	2A-3	
TOTALS:			14,730 SF					128/27.6"	2	2

NOTE: TERRACE AREA EXCLUDED FROM FLOOR TOTAL AREA PER OBCS SECTION 802.1.

**PLUMBING FIXTURE COUNT**  
 GROUP B OFFICE: 14,730 SF/200 = 74 OCCS  
 PER TABLE 20A  
 MALE: 3 WC & 2 LAV REQ'D  
 FEMALE: 3 WC & 2 LAV REQ'D



6 LIFE SAFETY PLAN - LEVEL 6  
 SCALE: 1/16" = 1' - 0"

**OCCUPANCY CLASSIFICATION TYPES**

- BUSINESS GROUP B
- MERCANTILE GROUP M
- ASSEMBLY GROUP A-3
- STORAGE GROUP S-2

**FIRE RESISTIVE - SEPARATION**

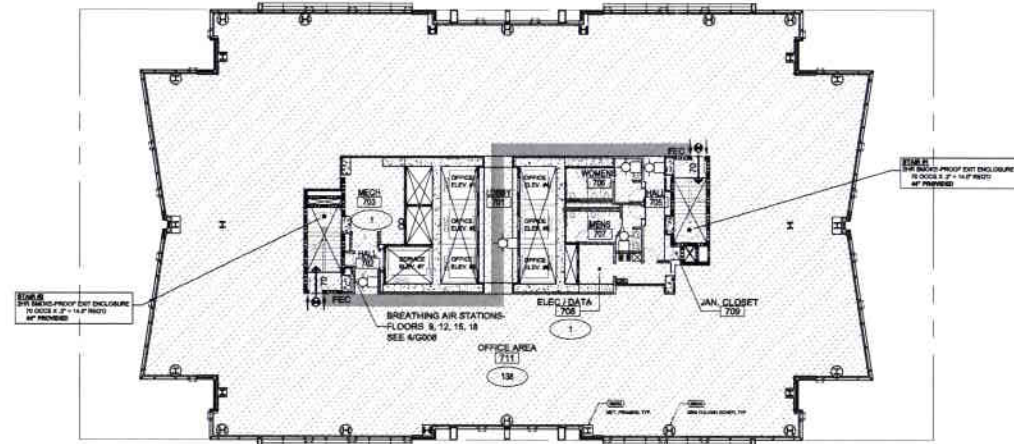
- 1 HOUR FIRE PARTITION
- 1 HOUR FIRE BARRIER
- 2 HOUR WALL
- 3 HOUR WALL
- 4 HOUR WALL

**LEGEND - LIFE SAFETY**

- EXIT PATH
- W/ EGRESS LIGHTING ON EMERGENCY POWER
- 8'-2" MIN VERTICAL ACCESSIBLE DRIVE CLEARANCE AREA
- OCC - OCCUPANT LOAD
- MAXIMUM TRAVEL DISTANCE
- EXIT TO PUBLIC WAY
- 12 - DIRECTION OF EGRESS + OCCUPANT NUMBER
- INTERNALLY ILLUMINATED EXIT SIGNAGE, COMPLIANT WITH OBCS SECTION 1011.
- INTERNALLY ILLUMINATED DIRECTIONAL EXIT SIGNAGE, COMPLIANT WITH OBCS 1011. ARROWS INDICATE DIRECTION.
- FEC - FIRE EXTINGUISHER TYPE 2-A 10-B-C
- FEC - FIRE EXTINGUISHER CABINET
- EXIT - TACTILE EXIT SIGN, COMPLIANT WITH OBCS 1011.3, STANDING "EXIT STAIR"
- ALARM - FIRE ALARM STROBE
- ALARM - FIRE ALARM STROBE CBLUNG MOUNTED

FIRE AND LIFE SAFETY SCHEDULE FLOOR 7-20 (FL 7-20)										
LEVEL	ROOM NUMBER	NAME	AREA	FUNCTION OF SPACE	LOAD FACTOR	OCCUPANCY LOAD	EXIT WIDTH (STAIR)	EXIT REQUIRED	EXIT PROVIDED	OCCUPANCY CLASSIFICATION
FL 7-20	701	ELEVATOR LOBBY						1	1B	
	702	HALL								
	703	MECH	241 SF MECHANICAL		300 GR		1	0.2	1	1B
	704	STAIR #2								
	705	HALL								
	706	WOMENS								
	707	MENS								
	708	ELEC/DATA	194 SF MECHANICAL		300 GR		1	0.2	1	1B
	709	JANITOR CLOSET								
	710	STAIR #1								
	711	OFFICE	13,742 SF BUSINESS AREA		100 GR		138	27.6"	2	2B
TOTALS:			14,137 SF					138/27.6"	2	2

**PLUMBING FIXTURE COUNT**  
 GROUP B OFFICE: 14,137 SF/200 = 71 OCCS  
 PER TABLE 20A  
 MALE: 3 WC & 2 LAV REQ'D  
 FEMALE: 3 WC & 2 LAV REQ'D



7 LIFE SAFETY PLAN - LEVELS 7 THRU 20  
 SCALE: 1/16" = 1' - 0"

tva architects  
 ROBERT THOMPSON, FAIA  
 TVA Architects, Inc.  
 920 SW Sixth Ave, Suite 1500  
 Portland, Oregon 97204  
 Phone 503.220.0668

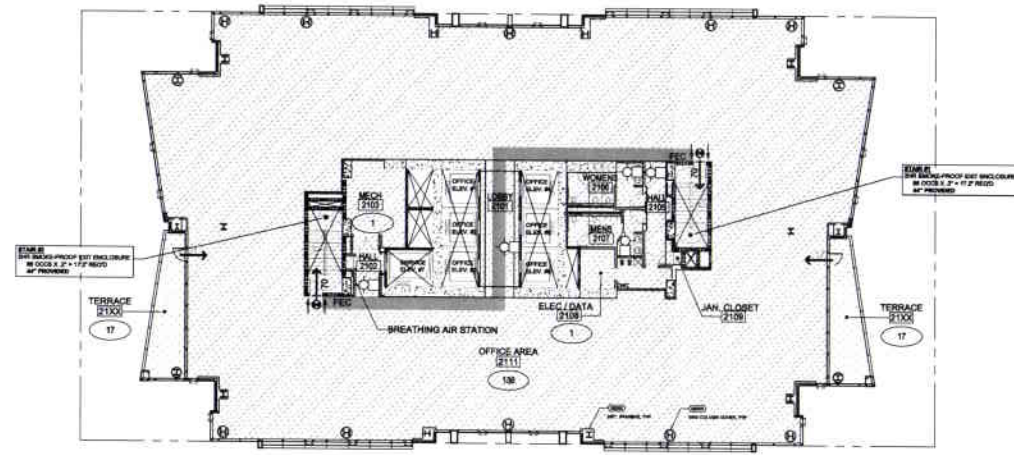


park avenue west tower.2  
 TMT DEVELOPMENT  
 portland, oregon  
 revision:

10.01.09  
 Permit Set  
 fire & life safety  
 fl4-5, 6, & 7-20  
 project: 9108  
 G007  
 ABOVE GRADE PERMIT SET

FIRE AND LIFE SAFETY SCHEDULE FLOOR 21											
LEVEL	ROOM NUMBER	NAME	AREA	FUNCTION OF SPACE	LOAD FACTOR	OCCUPANCY LOAD	EXIT WIDTH (STAIR)	EXIT REQUIRED	EXIT PROVIDED	OCCUPANCY CLASSIFICATION	
FL 21	2101	LOBBY									
	2102	HALL									
	2103	MECH	222 SF	MECHANICAL	300 GR		1.0	2	1	1B	
	2104	STAIR #2									
	2105	HALL									
	2106	WOMENS									
	2107	MENS									
	2108	ELEC / DATA	154 SF	MECHANICAL	300 GR		1.0	2	1	1B	
	2109	JANITOR									
	2110	STAIR #1									
	2111	OFFICE	13,551 SF	BUSINESS AREA	100 GR		126	27.2	2	2	2B
	2112	TERRACE	244 SF	ASSEMBLY / UNCONCENTRATED NET			17	4.8	1	1B	
2113	TERRACE	244 SF	ASSEMBLY / UNCONCENTRATED NET			17	4.8	1	1B		
TOTALS			13,773 SF				171	34.4	2	2	

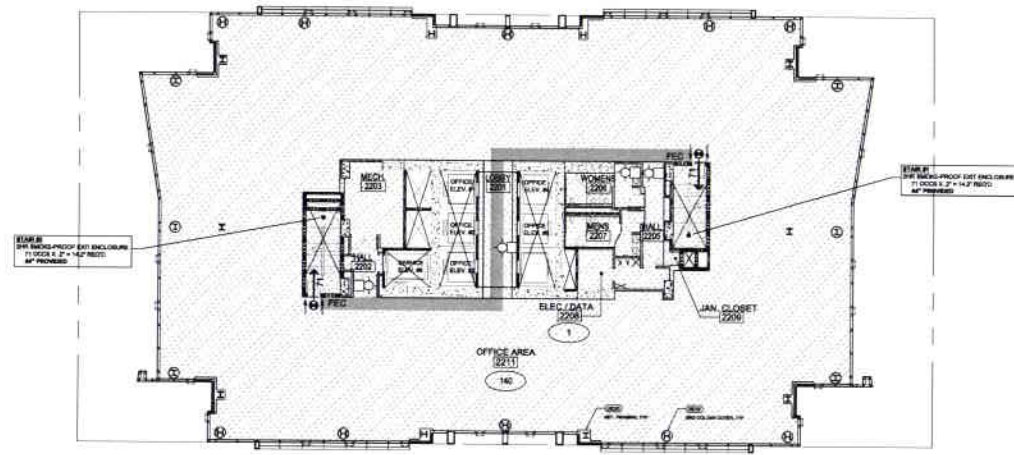
**PLUMBING FIXTURE COUNT**  
 GROUP B OFFICE: 14,415 SF/200 = 72 OCCS  
 PER TABLE 20A  
 MALE: 3 WC & 2 LAV REQ'D  
 FEMALE: 3 WC & 2 LAV REQ'D



21 LIFE SAFETY PLAN - LEVEL 21  
 SCALE: 1/16" = 1'-0"

FIRE AND LIFE SAFETY SCHEDULE FLOOR 22,24											
LEVEL	ROOM NUMBER	NAME	AREA	FUNCTION OF SPACE	LOAD FACTOR	OCCUPANCY LOAD	EXIT WIDTH (STAIR)	EXIT REQUIRED	EXIT PROVIDED	OCCUPANCY CLASSIFICATION	
FL 22	2201	LOBBY									
	2202	HALL									
	2203	MECH	222 SF	MECHANICAL	300 GR		1.0	2	1	1B	
	2204	STAIR #2									
	2205	HALL									
	2206	WOMENS									
	2207	MENS									
	2208	ELEC / DATA	154 SF	MECHANICAL	300 GR		1.0	2	1	1B	
	2209	JANITOR									
	2210	STAIR #1									
	2211	OFFICE	13,991 SF	BUSINESS AREA	100 GR		140	28.0	2	2	2B
	TOTALS			14,048 SF				141	28.2	2	2

**PLUMBING FIXTURE COUNT**  
 GROUP B OFFICE: 14,048 SF/200 = 71 OCCS  
 PER TABLE 20A  
 MALE: 3 WC & 2 LAV REQ'D  
 FEMALE: 3 WC & 2 LAV REQ'D



22 LIFE SAFETY PLAN - LEVEL 22 THRU LEVEL 24  
 SCALE: 1/16" = 1'-0"

**OCCUPANCY CLASSIFICATION TYPES**

- BUSINESS GROUP B
- MERCANTILE GROUP M
- ASSEMBLY GROUP A-3
- STORAGE GROUP S-2

**FIRE RESISTIVE - SEPARATION**

- 1 HOUR FIRE PARTITION
- 1 HOUR FIRE BARRIER
- 2 HOUR WALL
- 3 HOUR WALL
- 4 HOUR WALL

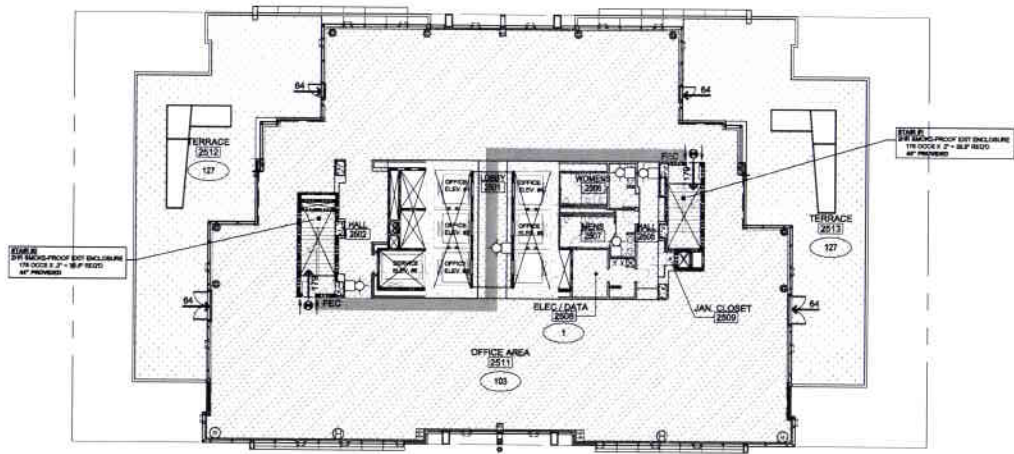
**LEGEND - LIFE SAFETY**

- EXIT PATH WITH EGRESS LIGHTING ON EMERGENCY POWER
- 8'-2" MIN. VERTICAL ACCESSIBLE DRIVE CLEARANCE AREA
- OCCUPANT LOAD
- MAXIMUM TRAVEL DISTANCE
- EXIT TO PUBLIC WAY
- DIRECTION OF EGRESS + OCCUPANT NUMBER
- INTERNALLY ILLUMINATED EXIT SIGNAGE COMPLIANT WITH OSBC SECTION 1011.
- INTERNALLY ILLUMINATED DIRECTIONAL EXIT SIGNAGE COMPLIANT WITH OSBC 1011. ARROWS INDICATE DIRECTION
- FEC FIRE EXTINGUISHER TYPE 2A 10-BC
- FEC FIRE EXTINGUISHER CABINET
- TACTILE EXIT SIGN COMPLIANT WITH OSBC 1011.3. STATING "EXIT STAIR"
- FIRE ALARM STROBE
- FIRE ALARM STROBE CEILING MOUNTED

FIRE AND LIFE SAFETY SCHEDULE FLOOR 25											
LEVEL	ROOM NUMBER	NAME	AREA	FUNCTION OF SPACE	LOAD FACTOR	OCCUPANCY LOAD	EXIT WIDTH (STAIR)	EXIT REQUIRED	EXIT PROVIDED	OCCUPANCY CLASSIFICATION	
FL 25	2501	LOBBY									
	2502	HALL									
	2503	NOT USED									
	2504	STAIR #2									
	2505	HALL									
	2506	WOMENS									
	2507	MENS									
	2508	ELEC / DATA	150 SF	MECHANICAL	300 GR		1.0	2	1	1B	
	2509	JANITOR									
	2510	STAIR #1									
	2511	OFFICE	8,987 SF	BUSINESS AREA	100 GR		190	38.0	2	2	2B
	2512	TERRACE	1900 SF	ASSEMBLY / UNCONCENTRATED NET			127	25.4	2	2	2A-3
2513	TERRACE	1900 SF	ASSEMBLY / UNCONCENTRATED NET			127	25.4	2	2	2A-3	
TOTALS			10,147 SF				388	71.0	2	2	

NOTE: TERRACE AREA EXCLUDED FROM FLOOR TOTAL AREA PER OSBC SECTION 502.1.

**PLUMBING FIXTURE COUNT**  
 GROUP B OFFICE: 13,847 SF/200 = 70 OCCS  
 PER TABLE 20A  
 MALE: 3 WC & 2 LAV REQ'D  
 FEMALE: 3 WC & 2 LAV REQ'D



25 LIFE SAFETY PLAN - LEVEL 25  
 SCALE: 1/16" = 1'-0"

tva architects

ROBERT THOMPSON, FAIA  
 TVA Architects, Inc.  
 520 SW Sixth Ave, Suite 1500  
 Portland, Oregon 97204  
 Phone 503.220.0668

REGISTERED ARCHITECT  
 ROBERT THOMPSON  
 PORTLAND, OREGON  
 STATE OF OREGON

park avenue west tower.2  
 TMT DEVELOPMENT  
 portland, oregon

10.01.09  
 Permit Set

fire & life safety  
 fl 21, 22-24, & 25  
 project: 9108

G008

ABOVE GRADE PERMIT SET

FIRE AND LIFE SAFETY SCHEDULE FLOOR 26										
LEVEL	ROOM NUMBER	NAME	AREA	FUNCTION OF SPACE	LOAD FACTOR	OCCUPANCY LOAD	EXIT WIDTH (STAIRS)	EXIT REQUIRED	EXIT PROVIDED	OCCUPANCY CLASSIFICATION
FL. 26	2601	LOBBY								
	2602	HALL								
	2603	NOT USED								
	2604	STAIR #2								
	2605	HALL								
	2606	WOMENS								
	2607	MENS								
	2608	ELEC. DATA	150 SF	MECHANICAL	300 GR.	1	0.2	1	1	1B-2
	2609	LIFTOR								
	2610	STAIR #1								
	2611	OFFICE	8,842 SF	BUSINESS AREA	100 GR.	100	20.0	2	2	2B
		TOTALS	10,092 SF				191	2.2	2	2

**PLUMBING FIXTURE COUNT**  
 GROUP B OFFICE: 10,092 SF/200 = 51 OCCS.  
 PER TABLE 20A  
 MALE: 3 WC & 2 LAV REQD.  
 FEMALE: 3 WC & 2 LAV REQD.

FIRE AND LIFE SAFETY SCHEDULE FLOOR 27										
LEVEL	ROOM NUMBER	NAME	AREA	FUNCTION OF SPACE	LOAD FACTOR	OCCUPANCY LOAD	EXIT WIDTH (STAIRS)	EXIT REQUIRED	EXIT PROVIDED	OCCUPANCY CLASSIFICATION
FL. 27	2701	VESTIBULE	77 SF	MECHANICAL	300 GR.	1	0.2	1	1	1B-2
	2702	MECH. RM. B	360 SF	MECHANICAL	300 GR.	2	0.4	1	1	1B-2
	2703	STAIR								
	2704	MECH. RM. A	1716 SF	MECHANICAL	300 GR.	6	1.2	2	2	1B-2
	2705	PUMP ROOM	481 SF	MECHANICAL	300 GR.	2	0.4	1	1	1B-2
	2706	ACCESSWAY	303 SF	MECHANICAL	300 GR.	2	0.4	1	1	1B-2
		TOTALS	5,471 SF				13	2.6	2	2

NOTE: THE COMMON PATH OF EGRESS TRAVEL IS LESS THAN 100 FEET. PER OSSC SECTION 1015.1 ONLY ONE EXIT FROM THIS LEVEL IS REQUIRED.  
 NOTE: A SECOND EXIT ACCESS DOORWAY IS REQUIRED FROM ROOM 2704 PER OSSC SECTION 1015.3. ONE OF THE REQUIRED EXIT ACCESS DOORWAYS IS PERMITTED TO BE A LADDER OR ALTERNATING TREAD DEVICE.

**OCCUPANCY CLASSIFICATION TYPES**

- BUSINESS GROUP B
- MERCANTILE GROUP M
- ASSEMBLY GROUP A-3
- STORAGE GROUP S-2

**FIRE RESISTIVE - SEPARATION**

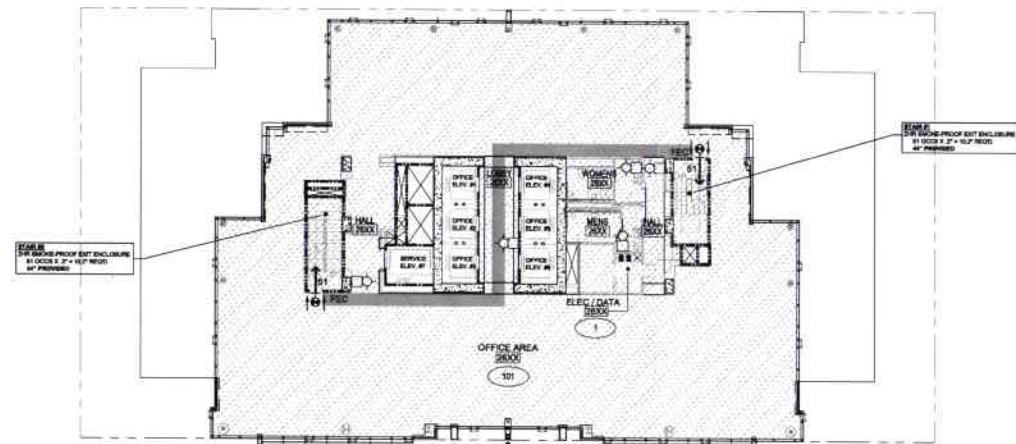
- 1 HOUR FIRE PARTITION
- 1 HOUR FIRE BARRIER
- 2 HOUR WALL
- 3 HOUR WALL
- 4 HOUR WALL

**LEGEND - LIFE SAFETY**

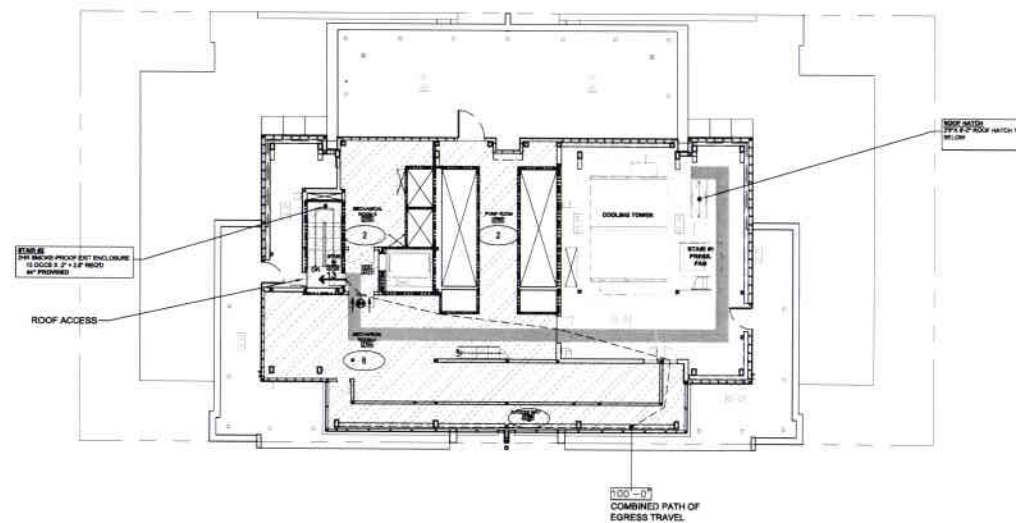
- EXIT PATH W/ EGRESS LIGHTING ON EMERGENCY POWER
- 8'-2" MIN. VERTICAL ACCESSIBLE DRIVE CLEARANCE AREA
- OCC - OCCUPANT LOAD
- 30'-0" - MAXIMUM TRAVEL DISTANCE
- EXIT TO PUBLIC WAY
- 12 - DIRECTION OF EGRESS + OCCUPANT NUMBER
- INTERNALLY ILLUMINATED EXIT SIGNAGE, COMPLIANT WITH OSSC SECTION 1011
- INTERNALLY ILLUMINATED DIRECTIONAL EXIT SIGNAGE, COMPLIANT WITH OSSC SECTION 1011, ARROWS INDICATE DIRECTION
- FEC - FIRE EXTINGUISHER TYPE 2-A 10-B-C
- FEC - FIRE EXTINGUISHER CABINET
- EXIT - TACTILE EXIT SIGN, COMPLIANT WITH OSSC 1011.3, STATING "EXIT STAIR"
- ALARM - FIRE ALARM STROBE
- ALARM - FIRE ALARM STROBE - CEILING MOUNTED

FIRE AND LIFE SAFETY SCHEDULE FLOOR 28										
LEVEL	ROOM NUMBER	NAME	AREA	FUNCTION OF SPACE	LOAD FACTOR	OCCUPANCY LOAD	EXIT WIDTH (STAIRS)	EXIT REQUIRED	EXIT PROVIDED	OCCUPANCY CLASSIFICATION
FL. 28	2801	ELEVATOR MACHINE RM.		MECHANICAL	300 GR.					1B-2
	2802	SERVICE ELEVATOR MACH. RM.		MECHANICAL	300 GR.					1B-2
	2803	MECHANICAL ROOM		MECHANICAL	300 GR.					1B-2

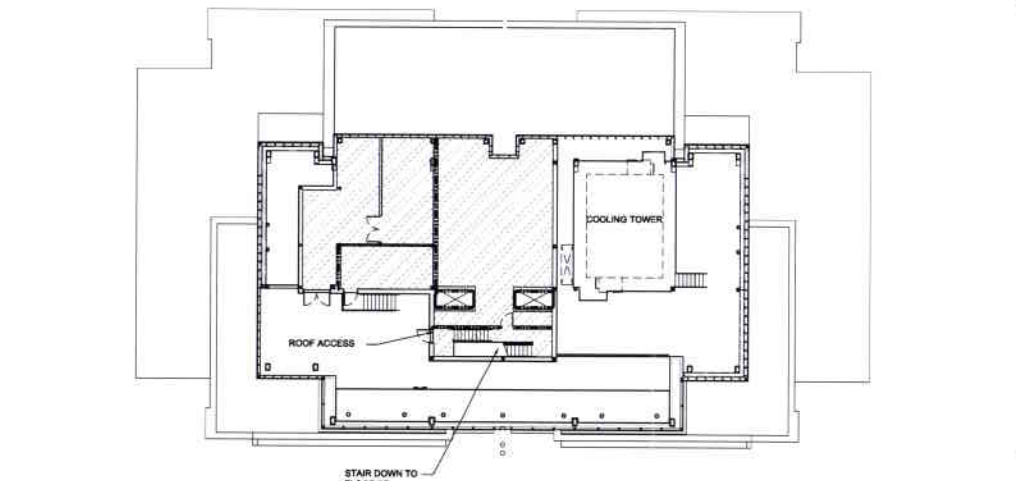
NOTE: ALL SPACES AT THIS LEVEL ARE EQUIPMENT PLATFORMS AS DEFINED BY OSSC SECTION 505.5.



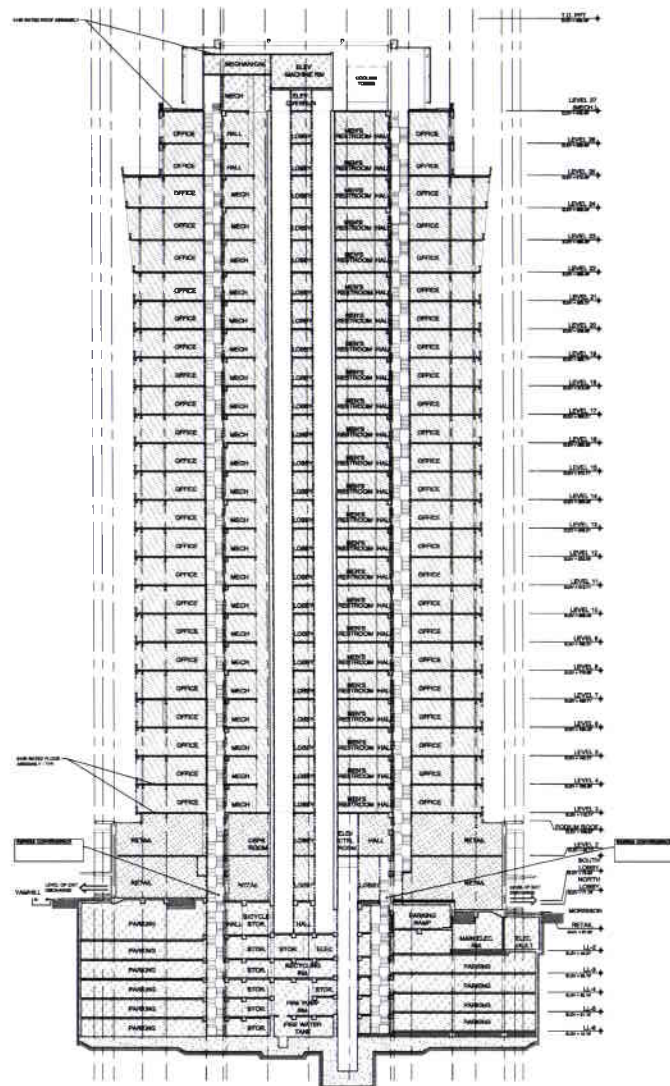
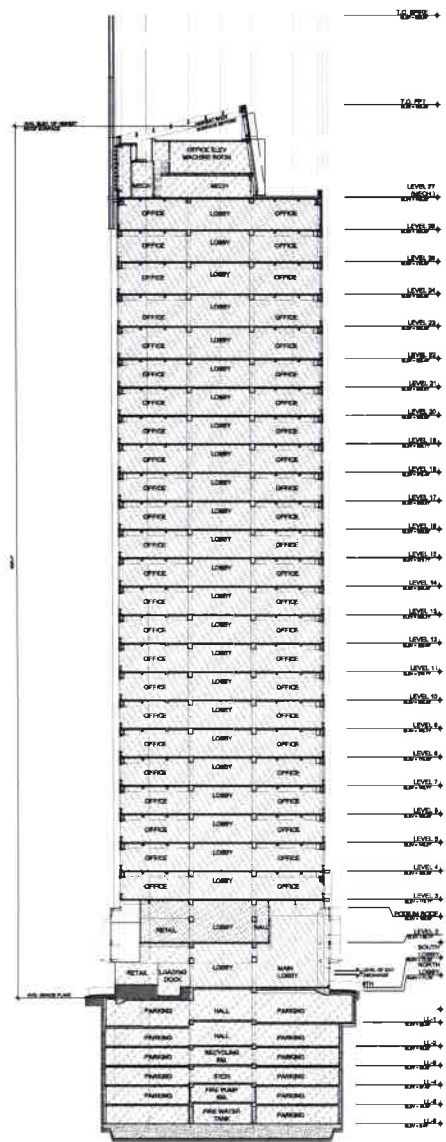
26 LIFE SAFETY PLAN - LEVEL 26  
 SCALE: 1/16" = 1'-0"



27 LIFE SAFETY PLAN - LEVEL 27  
 SCALE: 1/16" = 1'-0"



28 LIFE SAFETY PLAN - LEVEL 28 (EQUIPMENT PLATFORMS)  
 SCALE: 1/16" = 1'-0"



tva architects

ROBERT THOMPSON, FAIA  
TVA Architects, Inc.  
920 SW Sixth Ave, Suite 1500  
Portland, Oregon 97204  
Phone 503.220.0668



park avenue west tower.2  
TMT DEVELOPMENT  
portland, oregon

revisions:

10.01.09  
Permit Set

fire &  
life safety  
bldg sections  
project: 9108

G010

ABOVE GRADE PERMIT SET