



**Bureau of
Development
Services**
FROM CONCEPT
TO CONSTRUCTION

TRAINING OPPORTUNITY

Seismic Assessment & Retrofit Guidelines for Detached, Single-Family, Wood-Frame Dwellings

Hosted by:
Portland
Bureau of
Emergency
Management
(PBEM)



Presented by:
Federal
Emergency
Management
Agency
(FEMA)



FEMA

Exciting news for industry partners in Portland! PBEM has received a grant to host a training for FEMA P-50 and P-50-1 Simplified Seismic Assessment and Retrofit Guidelines for Detached, Single-Family, Wood-Frame Dwellings.

This course will present on the FEMA P-50 and P-50-1 documents, addressing seismic assessment and retrofit of detached single-family wood-frame dwellings. The simplified assessment methodology uses a six-page form to assign each dwelling a structural score, identify assessed items that could be retrofit and the improved grade that could result with retrofit.



**Tuesday,
April 23, 2019**



9 a.m. – 4 p.m.
(includes one-hour lunch)
Length: 7 hours (CEI credit: 3 hours)



**Portland Water Bureau
Interstate Auditorium**
644 N Tillamook St, Portland, OR 97227

Intended Audience: Design professionals, home builders, emergency planners, building officials, inspectors, plans examiners, insurers and any other persons interested in learning about how to implement or use results from the FEMA P-50 simplified seismic assessment methodology.

Cost: FREE

Registration: <https://bit.ly/2YzU9FI>

Download handbook: www.atcouncil.org/images/files/FEMA_P-50-1.pdf

For more information about this training opportunity,
please contact Katy.Wolf@PortlandOregon.gov

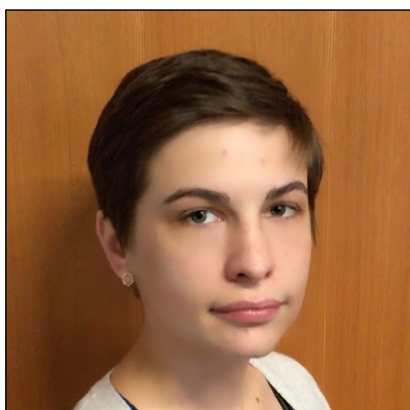
PBEM Training & Exercise and ECC Responder Program



Katy Wolf

Interim Operations Manager and
Exercise & Training Coordinator

- katy.wolf@portlandoregon.gov
- (503) 823-3874



Angela Carkner

Exercise & Training Specialist

- angela.carkner@portlandoregon.gov
- (503) 823-3926

Sign into [portlandoregon.gov](https://www.portlandoregon.gov), and visit our webpage for
more information:

<https://www.portlandoregon.gov/pbem/53229>