



**City of Portland, Oregon**  
**Bureau of Development Services**  
**Land Use Services**  
FROM CONCEPT TO CONSTRUCTION

Ted Wheeler, Mayor  
Rebecca Esau, Director  
Phone: (503) 823-7300  
Fax: (503) 823-5630  
TTY: (503) 823-6868  
[www.portlandoregon.gov/bds](http://www.portlandoregon.gov/bds)

**Date:** July 2, 2019  
**To:** Interested Person  
**From:** Hillary Adam, Land Use Services  
503-823-3581 / [Hillary.Adam@portlandoregon.gov](mailto:Hillary.Adam@portlandoregon.gov)

**NOTICE OF A TYPE Ix DECISION ON A PROPOSAL IN YOUR NEIGHBORHOOD**

The Bureau of Development Services has approved a proposal in your neighborhood. The mailed copy of this document is only a summary of the decision. The reasons for the decision are included in the version located on the BDS website <http://www.portlandonline.com/bds/index.cfm?c=46429>. Click on the District Coalition then scroll to the relevant Neighborhood, and case number. If you disagree with the decision, you can appeal. Information on how to do so is included at the end of this decision.

**CASE FILE NUMBER: LU 19-156330 HR – COMMON GROUNDS SIGNAGE**

**Applicant:** Chris Brown, Applicant 503-777-4555  
Ramsay Signs  
9160 SE 74th Ave, Portland, OR 97206

**Owner:** Association Of Unit Owners Of Irving Street Lofts, Owner  
1314 NW Irving St, Portland, OR 97209

**Site Address:** 1314 NW IRVING ST

**Legal Description:** A CONDOMINIUM GENERAL COMMON ELEMENTS, IRVING STREET LOFTS

**Tax Account No.:** R419800010, R419800010, R419800010

**State ID No.:** 1N1E33AD 80000, 1N1E33AD 80000, 1N1E33AD 80000

**Quarter Section:** 2928

**Neighborhood:** Pearl District, contact [planning@pearldistrict.org](mailto:planning@pearldistrict.org).

**Business District:** Pearl District Business Association, contact at [info@explorethepearl.com](mailto:info@explorethepearl.com)

**District Coalition:** Neighbors West/Northwest, contact Mark Sieber at 503-823-4212.

**Plan District:** Central City - Pearl District

**Other Designations:** Contributing resource in the NW 13<sup>th</sup> Avenue Historic District

**Zoning:** EXd – Central employment with Design and Historic Resource Protection overlays

**Case Type:** HR – Historic Resource Review

**Procedure:** Type Ix, an administrative decision with appeal to the Oregon Land Use Board of Appeals (LUBA).

**Proposal:**

Approval of three new signs all to be silkscreened onto an existing awning above the main entry to the subject retail space (indicated as location “A” on the site plan) in the Irving Street Lofts building, a contributing resource in the NW 13<sup>th</sup> Avenue Historic District. The sizes of the signs are as follows:

- One logo + letter sign, measuring 6'-7" (l) x 9 1/8" (h); and
- Two logo signs, measuring 1'-7<sup>3</sup>/<sub>4</sub>" (l) x 1'-5<sup>1</sup>/<sub>2</sub>" (h).

The Notice of Proposal indicated that the applicant was proposing four new non-illuminated pin-mounted signs in the following locations and sizes: letter sign facing NW Irving measuring 19'-5 5/8" (l) x 1'-6 1/2" (h) x 1/4" (d); letter sign facing NW 14<sup>th</sup> measuring 24'-5" (l) x 1'-11" (h) x 1/4" (d); and two logo signs facing NW 14<sup>th</sup>, measuring 8 3/4" (l) x 8" (h) x 1/4" (d). The applicant has since revised the proposal to that indicated in the paragraph above.

Historic Resource Review is required for all new signage within a historic district.

**Relevant Approval Criteria:**

In order to be approved, this proposal must comply with the approval criteria of Title 33. The relevant approval criteria are:

- Central City Fundamental Design Guidelines
- NW 13<sup>th</sup> Avenue Historic District Design Guidelines

**ANALYSIS**

**Site and Vicinity:** The subject building, named the Irving Street Lofts (ISL), is a contributing resource in the NW 13<sup>th</sup> Avenue Historic District and is located in the Pearl Subdistrict of the Central City Plan District. It is an existing eight story half-block condominium building situated on NW Irving Street between 13<sup>th</sup> and 14<sup>th</sup> Avenues in the Northwest Triangle Pedestrian District. Built in 1923 for the Blumauer-Frank Drug Company, it was once joined with a sky bridge across 14<sup>th</sup> to the Meier and Frank Warehouse, now the Avenue Lofts. In 1985, the building became the first major warehouse in the district to be converted to live-work lofts and became a unique creative community. In 1995, it was converted to live-work condominiums.

In 1904, the Portland City Council approved the construction of a railroad spur line along 13<sup>th</sup> Ave to extend from Johnson Street to Glisan Street, which was completed in 1907. This spur, as well as one along 15<sup>th</sup> and the purchase of 40 blocks in the area by various railroad companies resulted in a significant increase in land values as well as the construction of what became a warehouse district for the shipping and receiving of goods. NW 13<sup>th</sup> Avenue was the first spur line used specifically for warehouse use and is consequently the most intact, easily distinguished from other streets in the Pearl District by its wealth of extant brick warehouse buildings and its unusual pedestrian character marked by the prevalence of loading docks converted to contemporary use as elevated sidewalks.

**Zoning:** The Central Employment (EX) zone allows mixed-uses and is intended for areas in the center of the City that have predominantly industrial type development. The intent of the zone is to allow industrial and commercial uses which need a central location. Residential uses are allowed but are not intended to predominate or set development standards for other uses in the area. The development standards are intended to allow new development which is similar in character to existing development.

The Historic Resource Protection overlay is comprised of Historic and Conservation Districts, as well as Historic and Conservation Landmarks and protects certain historic resources in the region and preserves significant parts of the region's heritage. The regulations implement Portland's Comprehensive Plan policies that address historic preservation. These policies recognize the role historic resources have in promoting the education and enjoyment of those living in and visiting the region. The regulations foster pride among the region's citizens in their city and its heritage. Historic preservation beautifies the city, promotes the city's economic health, and helps to preserve and enhance the value of historic properties.

The “d” (Design) overlay promotes the conservation and enhancement of areas of the City with special historic, architectural or cultural value. New development and exterior modifications to existing development are subject to design review. This is achieved through the creation of design districts and applying the Design Overlay Zone as part of community planning projects, development of design guidelines for each district, and by requiring design review. In addition, design review ensures that certain types of infill development will be compatible with the neighborhood and enhance the area.

The Central City Plan District implements the Central City 2035 Plan. The regulations address the unique role the Central City plays as the region’s premier center for jobs, health and human services, tourism, entertainment and urban living. The regulations encourage a high-density urban area with a broad mix of commercial, residential, industrial and institutional uses, and foster transit-supportive development, pedestrian and bicycle-friendly streets, a vibrant public realm and a healthy urban river. The site is within the Pearl Subdistrict of this plan district.

**Land Use History:** City records indicate that prior land use reviews include the following:

- LU 91-008307 HL (LUR 91-00053 HL) - Approval with conditions to replace 3 overhead doors.
- LU 95-012362 DZ (LUR 95-00469 DZ) - Design Review approval for new banner signs.
- LU 97-014304 DZ (LUR 97-00258 DZ) - Design Review approval of awning.
- LU 06-104448 HDZ – Approval of replacement of glass canopy, 3 new signs, exterior lighting, and louver installation.
- LU 06-162213 DA – Design Advice Request for alterations to penthouse.
- LU 06-185602 HDZ – Approval of penthouse addition and roof decks.
- LU 19-119960 HR – Approval to replace a window with a kitchen hood exhaust vent.

**Agency Review:** A Notice of Proposal in your Neighborhood was mailed on **May 20, 2019**. The following Bureaus have responded with no issues or concerns about the proposal:

- Life Safety Division of BDS
- Site Development Section of BDS
- Fire Bureau

**Neighborhood Review:** A Notice of Proposal in Your Neighborhood was mailed on **May 20, 2019**. No written responses have been received from either the Neighborhood Association or notified property owners in response to the proposal.

## **ZONING CODE APPROVAL CRITERIA**

### **Chapter 33.846.060 - Historic Resource Review**

#### **Purpose of Historic Resource Review**

Historic Resource Review ensures the conservation and enhancement of the special characteristics of historic resources.

#### **Historic Resource Review Approval Criteria**

Requests for Historic Resource Review will be approved if the review body finds the applicant has shown that all of the approval criteria have been met.

**Findings:** The site is located within the NW 13th Avenue Historic District and the proposal is for a non-exempt treatment. Therefore, Historic Resource Review approval is required. The approval criteria are the *NW 13<sup>th</sup> Avenue Historic District Design Guidelines* and the *Central City Fundamental Design Guidelines*.

*Staff has considered all guidelines and addressed only those applicable to this proposal.*

**NW 13<sup>th</sup> Avenue Historic District Design Guidelines****GUIDELINES FOR EXTERIOR REMODELING HISTORIC NW 13<sup>TH</sup> AVENUE DISTRICT**

- 6. Signs.** There is a tradition in the NW 13th Avenue Historic District of painting large signs on the walls (usually on non-street elevations) of warehouse structures. These historic painted wall signs should be retained where practical.

New signs on the principal (i.e., street) elevations of new or existing buildings should be restrained and should not be a dominant facade feature. Lettering painted on windows, and signs located inside buildings are appropriate; moreover, these types of signs do not require review. Other appropriate design types include indirectly lit letters mounted on spandrels above the storefront, or signs on an entry awning. Contemporary plastic, backlit signs are discouraged. Signs should be mounted so as to minimally damage any historic surface to which they are attached.

**Findings:** The proposed signs are simple in their detailing and adhered to a retail entry awning. This type of signage will not cause any damage to the historic building as the awning is fabric and not historic. The signs are placed to mark the entrance and will not dominate the façade. *This guideline is met.*

**Central City Fundamental Design Guidelines**

**B2. Protect the Pedestrian.** Protect the pedestrian environment from vehicular movement. Develop integrated identification, sign, and sidewalk-oriented night-lighting systems that offer safety, interest, and diversity to the pedestrian. Incorporate building equipment, mechanical exhaust routing systems, and/or service areas in a manner that does not detract from the pedestrian environment.

**C2. Promote Quality and Permanence in Development.** Use design principles and building materials that promote quality and permanence.

**C3. Respect Architectural Integrity.** Respect the original character of an existing building when modifying its exterior. Develop vertical and horizontal additions that are compatible with the existing building, to enhance the overall proposal's architectural integrity.

**C5. Design for Coherency.** Integrate the different building and design elements including, but not limited to, construction materials, roofs, entrances, as well as window, door, sign, and lighting systems, to achieve a coherent composition.

**C7. Design Corners that Build Active Intersections.** Use design elements including, but not limited to, varying building heights, changes in façade plane, large windows, awnings, canopies, marquees, signs and pedestrian entrances to highlight building corners. Locate flexible sidewalk-level retail opportunities at building corners. Locate stairs, elevators, and other upper floor building access points toward the middle of the block.

**C8. Differentiate the Sidewalk-Level of Buildings.** Differentiate the sidewalk-level of the building from the middle and top by using elements including, but not limited to, different exterior materials, awnings, signs, and large windows.

**C13. Integrate Signs.** Integrate signs and their associated structural components with the building's overall design concept. Size, place, design, and light signs to not dominate the skyline. Signs should have only a minimal presence in the Portland skyline.

**Findings for B2, C2, C3, C5, C7, C8, C12 and C13:** The proposed signs are simple in their detailing and adhered to a retail entry awning. This type of signage will not cause any damage to the historic building as the awning is fabric and not historic; thus, the proposed signage will respect the architectural integrity of the building. The signs are relatively simple in their design which complements the simple yet elegant former warehouse building. The signs will be located on the retail entry awning to highlight the retail entrance. *These guidelines are met.*

## **Oregon Statewide Planning Goals**

### **Goal 1: Citizen Involvement**

Goal 1 calls for “the opportunity for citizens to be involved in all phases of the planning process.” It requires each city and county to have a citizen involvement program containing six components specified in the goal. It also requires local governments to have a Committee for Citizen Involvement (CCI) to monitor and encourage public participation in planning.

**Findings:** The City of Portland maintains an extensive citizen involvement program which complies with all relevant aspects of Goal 1, including specific requirements in Zoning Code Chapter 33.730 for public notice of land use review applications that seek public comment on proposals. There are opportunities for the public to testify at a local hearing on land use proposals for Type III land use review applications, and for Type II and Type IIX land use decisions if appealed. *For this application, a written notice seeking comments on the proposal was mailed to property-owners and tenants within 100 feet of the site, and to recognized organizations in which the site is located.* The public notice requirements for this application have been and will continue to be met, and nothing about this proposal affects the City’s ongoing compliance with Goal 1. *Therefore, the proposal is consistent with this goal.*

### **Goal 2: Land Use Planning**

Goal 2 outlines the basic procedures of Oregon’s statewide planning program. It states that land use decisions are to be made in accordance with a comprehensive plan, and that suitable “implementation ordinances” to put the plan’s policies into effect must be adopted. It requires that plans be based on “factual information”; that local plans and ordinances be coordinated with those of other jurisdictions and agencies; and that plans be reviewed periodically and amended as needed. Goal 2 also contains standards for taking exceptions to statewide goals. An exception may be taken when a statewide goal cannot or should not be applied to a particular area or situation.

**Findings:** Compliance with Goal 2 is achieved, in part, through the City’s comprehensive planning process and land use regulations. For quasi-judicial proposals, Goal 2 requires that the decision be supported by an adequate factual base, which means it must be supported by substantial evidence in the record. *As discussed earlier in the findings that respond to the relevant approval criteria contained in the Portland Zoning Code, the proposal complies with the applicable regulations, as supported by substantial evidence in the record. As a result, the proposal meets Goal 2.*

### **Goal 3: Agricultural Lands**

Goal 3 defines “agricultural lands,” and requires counties to inventory such lands and to “preserve and maintain” them through farm zoning. Details on the uses allowed in farm zones are found in ORS Chapter 215 and in Oregon Administrative Rules, Chapter 660, Division 33.

### **Goal 4: Forest Lands**

This goal defines forest lands and requires counties to inventory them and adopt policies and ordinances that will “conserve forest lands for forest uses.”

**Findings for Goals 3 and 4:** In 1991, as part of Ordinance No. 164517, the City of Portland took an exception to the agriculture and forestry goals in the manner authorized by state law and Goal 2. Since this review does not change any of the facts or analyses upon which the exception was based, the exception is still valid and Goal 3 and Goal 4 do not apply.

### **Goal 5: Open Spaces, Scenic and Historic Areas and Natural Resources**

Goal 5 relates to the protection of natural and cultural resources. It establishes a process for inventorying the quality, quantity, and location of 12 categories of natural resources. Additionally, Goal 5 encourages but does not require local governments to maintain inventories of historic resources, open spaces, and scenic views and sites.

**Findings:** The City complies with Goal 5 by identifying and protecting natural, scenic, and historic resources in the City’s Zoning Map and Zoning Code. Natural and scenic resources are identified by the Environmental Protection (“p”), Environmental Conservation (“c”), and Scenic (“s”) overlay zones on the Zoning Map. The Zoning Code imposes special restrictions on development activities within these overlay zones. Historic resources are identified on the Zoning Map either with landmark designations for individual sites or as Historic Districts or Conservation Districts. *This site is a contributing resource within the NW 13<sup>th</sup> Avenue Historic District. Compliance with all requirements related to this designation have been verified as part of this land use review. Therefore, the proposal is consistent with Goal 5.*

#### **Goal 6: Air, Water and Land Resources Quality**

Goal 6 requires local comprehensive plans and implementing measures to be consistent with state and federal regulations on matters such as groundwater pollution.

**Findings:** Compliance with Goal 6 is achieved through the implementation of development regulations such as the City’s Stormwater Management Manual at the time of building permit review, and through the City’s continued compliance with Oregon Department of Environmental Quality (DEQ) requirements for cities. The Bureau of Environmental Services reviewed the proposal for conformance with sanitary sewer and stormwater management requirements and expressed no objections to approval of the application, as mentioned earlier in this report. *Staff finds the proposal is consistent with Goal 6. In this case, the scope of the project does not warrant review by the Bureau of Environmental Services; Goal 6 is not applicable.*

#### **Goal 7: Areas Subject to Natural Disasters and Hazards**

Goal 7 requires that jurisdictions adopt development restrictions or safeguards to protect people and property from natural hazards. Under Goal 7, natural hazards include floods, landslides, earthquakes, tsunamis, coastal erosion, and wildfires. Goal 7 requires that local governments adopt inventories, policies, and implementing measures to reduce risks from natural hazards to people and property.

**Findings:** The City complies with Goal 7 by mapping natural hazard areas such as floodplains and potential landslide areas, which can be found in the City’s MapWorks geographic information system. The City imposes additional requirements for development in those areas through a variety of regulations in the Zoning Code, such as through special plan districts or land division regulations. *The subject site is not within any mapped floodplain or landslide hazard area, so Goal 7 does not apply.*

#### **Goal 8: Recreation Needs**

Goal 8 calls for each community to evaluate its areas and facilities for recreation and develop plans to deal with the projected demand for them. It also sets forth detailed standards for expediting siting of destination resorts.

**Findings:** The City maintains compliance with Goal 8 through its comprehensive planning process, which includes long-range planning for parks and recreational facilities. Staff finds the current proposal will not affect existing or proposed parks or recreation facilities in any way that is not anticipated by the zoning for the site, or by the parks and recreation system development charges that are assessed at time of building permit. Furthermore, nothing about the proposal will undermine planning for future facilities. *Therefore, the proposal is consistent with Goal 8.*

#### **Goal 9: Economy of the State**

Goal 9 calls for diversification and improvement of the economy. Goal 9 requires communities to inventory commercial and industrial lands, project future needs for such lands, and plan and zone enough land to meet those needs.

**Findings:** Land needs for a variety of industrial and commercial uses are identified in the adopted and acknowledged Economic Opportunity Analysis (EOA) (Ordinance 187831). The EOA analyzed adequate growth capacity for a diverse range of employment

uses by distinguishing several geographies and conducting a buildable land inventory and capacity analysis in each. In response to the EOA, the City adopted policies and regulations to ensure an adequate supply of sites of suitable size, type, location and service levels in compliance with Goal 9. The City must consider the EOA and Buildable Lands Inventory when updating the City's Zoning Map and Zoning Code. *Because this proposal does not change the supply of industrial or commercial land in the City, the proposal is consistent with Goal 9.*

#### **Goal 10: Housing**

Goal 10 requires local governments to plan for and accommodate needed housing types. The Goal also requires cities to inventory its buildable residential lands, project future needs for such lands, and plan and zone enough buildable land to meet those needs. It also prohibits local plans from discriminating against needed housing types.

**Findings:** The City complies with Goal 10 through its adopted and acknowledged inventory of buildable residential land (Ordinance 187831), which demonstrates that the City has zoned and designated an adequate supply of housing. For needed housing, the Zoning Code includes clear and objective standards. *Since this proposal is not related to housing or to land zoned for residential use, Goal 10 is not applicable.*

#### **Goal 11: Public Facilities and Services**

Goal 11 calls for efficient planning of public services such as sewers, water, law enforcement, and fire protection. The goal's central concept is that public services should be planned in accordance with a community's needs and capacities rather than be forced to respond to development as it occurs.

**Findings:** The City of Portland maintains an adopted and acknowledged public facilities plan to comply with Goal 11. See Citywide Systems Plan adopted by Ordinance 187831. The public facilities plan is implemented by the City's public services bureaus, and these bureaus review development applications for adequacy of public services. Where existing public services are not adequate for a proposed development, the applicant is required to extend public services at their own expense in a way that conforms to the public facilities plan. *In this case, the scope of the project does not warrant review by the City's public services bureaus; Goal 11 is not applicable.*

#### **Goal 12: Transportation**

Goal 12 seeks to provide and encourage "safe, convenient and economic transportation system." Among other things, Goal 12 requires that transportation plans consider all modes of transportation and be based on inventory of transportation needs.

**Findings:** The City of Portland maintains a Transportation System Plan (TSP) to comply with Goal 12, adopted by Ordinances 187832, 188177 and 188957. The City's TSP aims to "make it more convenient for people to walk, bicycle, use transit, use automobile travel more efficiently, and drive less to meet their daily needs." The extent to which a proposal affects the City's transportation system and the goals of the TSP is evaluated by the Portland Bureau of Transportation (PBOT). *The scope of this project does not warrant transportation review; therefore Goal 12 is not applicable.*

#### **Goal 13: Energy**

Goal 13 seeks to conserve energy and declares that "land and uses developed on the land shall be managed and controlled so as to maximize the conservation of all forms of energy, based upon sound economic principles."

**Findings:** With respect to energy use from transportation, as identified above in response to Goal 12, the City maintains a TSP that aims to "make it more convenient for people to walk, bicycle, use transit, use automobile travel more efficiently, and drive less to meet their daily needs." This is intended to promote energy conservation related to transportation. Additionally, at the time of building permit review and inspection, the City will also implement energy efficiency requirements for the building itself, as required by the current building code. *For these reasons, staff finds the proposal is consistent with*

*Goal 13.*

**Goal 14: Urbanization**

This goal requires cities to estimate future growth and needs for land and then plan and zone enough land to meet those needs. It calls for each city to establish an “urban growth boundary” (UGB) to “identify and separate urbanizable land from rural land.” It specifies seven factors that must be considered in drawing up a UGB. It also lists four criteria to be applied when undeveloped land within a UGB is to be converted to urban uses.

**Findings:** In the Portland region, most of the functions required by Goal 14 are administered by the Metro regional government rather than by individual cities. The desired development pattern for the region is articulated in Metro’s Regional 2040 Growth Concept, which emphasizes denser development in designated centers and corridors. The Regional 2040 Growth Concept is carried out by Metro’s Urban Growth Management Functional Plan, and the City of Portland is required to conform its zoning regulations to this functional plan. *This land use review proposal does not change the UGB surrounding the Portland region and does not affect the Portland Zoning Code’s compliance with Metro’s Urban Growth Management Functional Plan. Therefore, Goal 14 is not applicable.*

**Goal 15: Willamette Greenway**

Goal 15 sets forth procedures for administering the 300 miles of greenway that protects the Willamette River.

**Findings:** The City of Portland complies with Goal 15 by applying Greenway overlay zones which impose special requirements on development activities near the Willamette River. *The subject site for this review is not within a Greenway overlay zone near the Willamette River, so Goal 15 does not apply.*

**Goal 16: Estuarine Resources**

This goal requires local governments to classify Oregon’s 22 major estuaries in four categories: natural, conservation, shallow-draft development, and deep-draft development. It then describes types of land uses and activities that are permissible in those “management units.”

**Goal 17: Coastal Shorelands**

This goal defines a planning area bounded by the ocean beaches on the west and the coast highway (State Route 101) on the east. It specifies how certain types of land and resources there are to be managed: major marshes, for example, are to be protected. Sites best suited for unique coastal land uses (port facilities, for example) are reserved for “water-dependent” or “water-related” uses.

**Goal 18: Beaches and Dunes**

Goal 18 sets planning standards for development on various types of dunes. It prohibits residential development on beaches and active foredunes, but allows some other types of development if they meet key criteria. The goal also deals with dune grading, groundwater drawdown in dunal aquifers, and the breaching of foredunes.

**Goal 19: Ocean Resources**

Goal 19 aims “to conserve the long-term values, benefits, and natural resources of the nearshore ocean and the continental shelf.” It deals with matters such as dumping of dredge spoils and discharging of waste products into the open sea. Goal 19’s main requirements are for state agencies rather than cities and counties.

**Findings for 16, 17, 18, and 19:** *Since Portland is not within Oregon’s coastal zone, Goals 16-19 do not apply.*

**DEVELOPMENT STANDARDS**

Unless specifically required in the approval criteria listed above, this proposal does not have to meet the development standards in order to be approved during this review process. The plans submitted for a building or zoning permit must demonstrate that all requirements of



Title 11 can be met, and that all development standards of Title 33 can be met or have received an Adjustment or Modification via a land use review, prior to the approval of a building or zoning permit.

## CONCLUSIONS

The proposed signs are simple in their design and respectfully attached to the historic building and will result in a coherent expression at this retail corner. The design review process exists to promote the conservation, enhancement, and continued vitality of areas of the City with special scenic, architectural, or cultural value. The proposal meets the applicable design guidelines and therefore warrants approval.

## ADMINISTRATIVE DECISION


Approval of three new signs all to be silkscreened onto an existing awning above the main entry to the subject retail space (indicated as location “A” on the site plan) in the Irving Street Lofts building, a contributing resource in the NW 13<sup>th</sup> Avenue Historic District. The sizes of the signs are as follows:

- One logo + letter sign, measuring 6'-7" (l) x 9 1/8" (h); and
- Two logo signs, measuring 1'-7<sup>3</sup>/<sub>4</sub>" (l) x 1'-5<sup>1</sup>/<sub>2</sub>" (h).

This approval is per the approved site plans, Exhibits C-1 through C-3, signed and dated June 26, 2019, subject to the following conditions:

- As part of the building permit application submittal, the following development-related conditions (B through XX) must be noted on each of the four required site plans or included as a sheet in the numbered set of plans. The sheet on which this information appears must be labeled "ZONING COMPLIANCE PAGE- Case File LU 19-156330 HR." All requirements must be graphically represented on the site plan, landscape, or other required plan and must be labeled "REQUIRED."
- At the time of building permit submittal, a signed Certificate of Compliance form (<https://www.portlandoregon.gov/bds/article/623658>) must be submitted to ensure the permit plans comply with the Design/Historic Resource Review decision and approved exhibits.
- No field changes allowed.

**Staff Planner: Hillary Adam**

**Decision rendered by:**  **on June 26, 2019**  
By authority of the Director of the Bureau of Development Services

**Decision mailed: July 2, 2019**

**About this Decision.** This land use decision is **not a permit** for development. Permits may be required prior to any work. Contact the Development Services Center at 503-823-7310 for information about permits.

**Procedural Information.** The application for this land use review was submitted on April 26, 2019 and was determined to be complete on May 16, 2019.

*Zoning Code Section 33.700.080* states that Land Use Review applications are reviewed under the regulations in effect at the time the application was submitted, provided that the application is complete at the time of submittal, or complete within 180 days. Therefore this application was reviewed against the Zoning Code in effect on April 26, 2019.

ORS 227.178 states the City must issue a final decision on Land Use Review applications within 120-days of the application being deemed complete. The 120-day review period may be waived or extended at the request of the applicant. In this case the applicant did not

waive or extend the 120-day review period. Unless further extended by the applicant, **the 120 days will expire on: September 13, 2019.**

**Some of the information contained in this report was provided by the applicant.**

As required by Section 33.800.060 of the Portland Zoning Code, the burden of proof is on the applicant to show that the approval criteria are met. The Bureau of Development Services has independently reviewed the information submitted by the applicant and has included this information only where the Bureau of Development Services has determined the information satisfactorily demonstrates compliance with the applicable approval criteria. This report is the decision of the Bureau of Development Services with input from other City and public agencies.

**Conditions of Approval.** If approved, this project may be subject to a number of specific conditions, listed above. Compliance with the applicable conditions of approval must be documented in all related permit applications. Plans and drawings submitted during the permitting process must illustrate how applicable conditions of approval are met. Any project elements that are specifically required by conditions of approval must be shown on the plans, and labeled as such.

These conditions of approval run with the land, unless modified by future land use reviews. As used in the conditions, the term “applicant” includes the applicant for this land use review, any person undertaking development pursuant to this land use review, the proprietor of the use or development approved by this land use review, and the current owner and future owners of the property subject to this land use review.

**This decision, and any conditions associated with it, is final.** It may be appealed to the Oregon Land Use Board of Appeals (LUBA), within 21 days of the date the decision is mailed, as specified in the Oregon Revised Statute (ORS) 197.830. Among other things, ORS 197.830 requires that a petitioner at LUBA must have submitted written testimony during the comment period for this land use review. Contact LUBA at 775 Summer St NE Suite 330, Salem, OR 97301-1283 or phone 1-503-373-1265 for further information.

The file and all evidence on this case are available for your review by appointment only. Please call the Request Line at our office, 1900 SW Fourth Avenue, Suite 5000, phone 503-823-7617, to schedule an appointment. I can provide some information over the phone. Copies of all information in the file can be obtained for a fee equal to the cost of services. Additional information about the City of Portland, city bureaus, and a digital copy of the Portland Zoning Code is available on the internet at [www.portlandonline.com](http://www.portlandonline.com).

**Recording the final decision.**

If this Land Use Review is approved the final decision will be recorded with the Multnomah County Recorder.

- *Unless appealed*, the final decision will be recorded after **July 3, 2019** by the Bureau of Development Services.

The applicant, builder, or a representative does not need to record the final decision with the Multnomah County Recorder.

For further information on your recording documents please call the Bureau of Development Services Land Use Services Division at 503-823-0625.

**Expiration of this approval.** An approval expires three years from the date the final decision is rendered unless a building permit has been issued, or the approved activity has begun.

Where a site has received approval for multiple developments, and a building permit is not issued for all of the approved development within three years of the date of the final decision, a new land use review will be required before a permit will be issued for the remaining development, subject to the Zoning Code in effect at that time.

**Applying for your permits.** A building permit, occupancy permit, or development permit may be required before carrying out an approved project. At the time they apply for a permit, permittees must demonstrate compliance with:

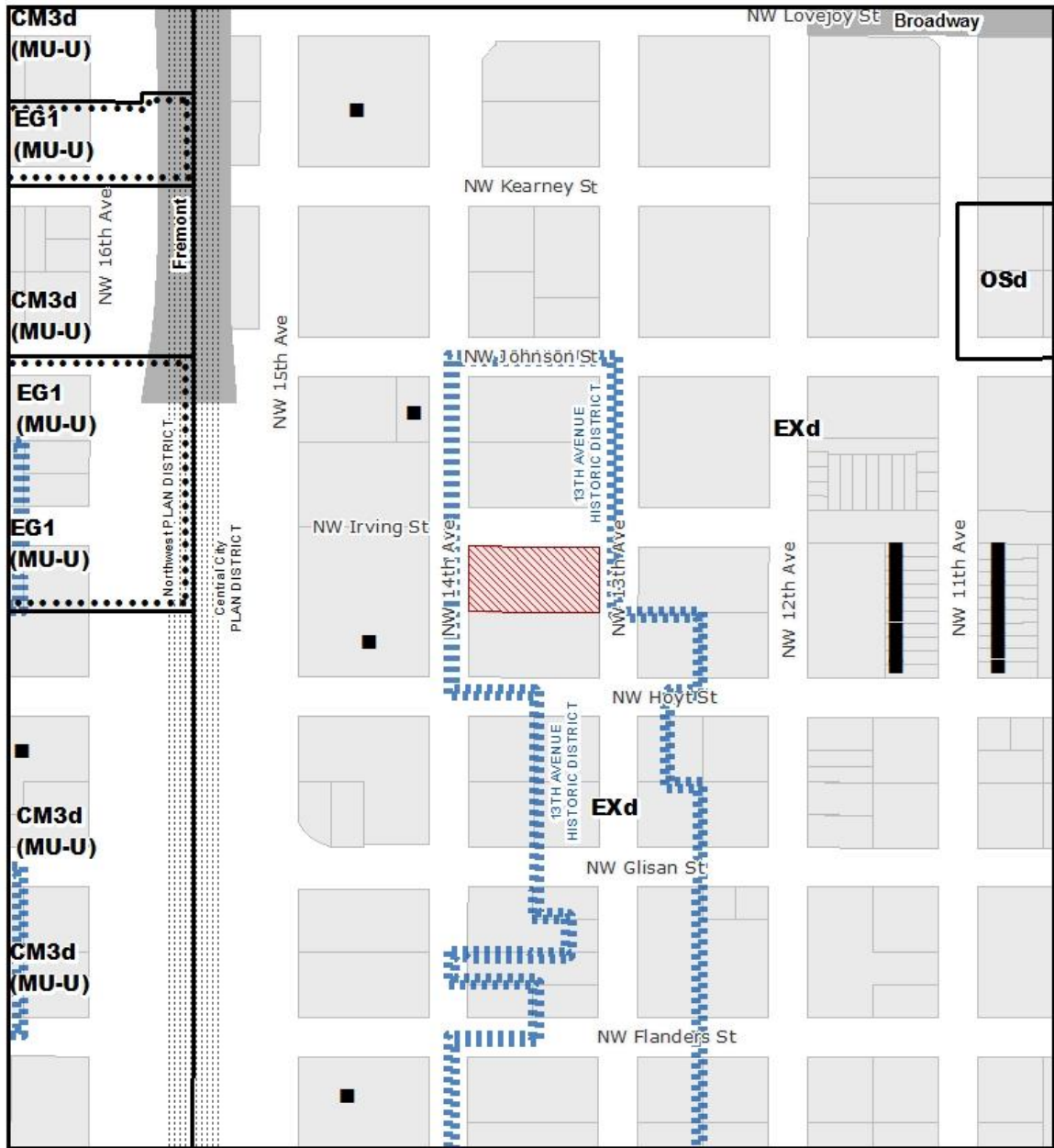
- All conditions imposed herein;
- All applicable development standards, unless specifically exempted as part of this land use review;
- All requirements of the building code; and
- All provisions of the Municipal Code for the City of Portland, and all other applicable ordinances, provisions and regulations of the City.

#### **EXHIBITS**

NOT ATTACHED UNLESS INDICATED

- A. Applicant's Statement
  - 1. Narrative
  - 2. Original Drawings
  - 3. Revised Drawings
- B. Zoning Map (attached)
- C. Plans/Drawings:
  - 1. Site Plan (attached)
  - 2. Sign Details (attached)
  - 3. Photo Simulation
- D. Notification information:
  - 1. Mailing list
  - 2. Mailed notice
- E. Agency Responses:
  - 1. Life Safety Division of BDS
- F. Correspondence: none
- G. Other:
  - 1. Original LU Application
  - 2. Email Correspondence with Applicant

**The Bureau of Development Services is committed to providing equal access to information and hearings. Please notify us no less than five business days prior to the event if you need special accommodations. Call 503-823-7300 (TTY 503-823-6868).**



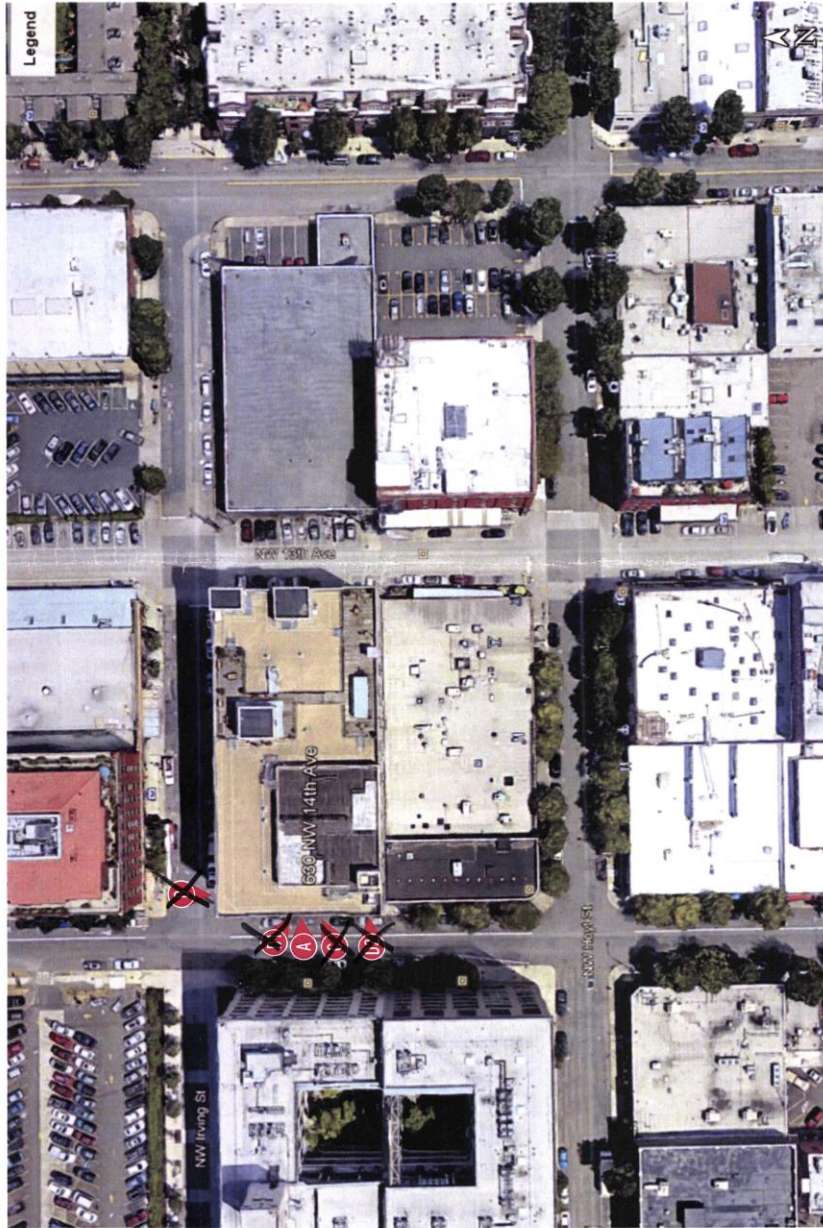
**ZONING** ↑  
NORTH

THIS SITE LIES WITHIN THE:  
CENTRAL CITY PLAN DISTRICT  
PEARL SUBDISTRICT  
13TH AVENUE HISTORIC DISTRICT

-  Site
-  Historic Landmark
-  Bridge

|             |                   |
|-------------|-------------------|
| File No.    | LU 19-156330 HR   |
| 1/4 Section | 2928              |
| Scale       | 1 inch = 200 feet |
| State ID    | 1N1E33AD 80000    |
| Exhibit     | B Apr 29, 2019    |

EXTERIOR: SITE PLAN



\*Approved\*  
 City of Portland  
 Bureau of Development Services  
 Planner Chadler  
 Date 6/26/19

\* This approval applies only to the reviews requested and is subject to all conditions of approval. Additional zoning requirements may apply.

**RAMSAY SIGNS** PRODUCTION PRINT  
 DESIGN & SALES PRINTED FOR POTENTIAL, PROVISION & ACCURACY  
 SALES: DATE: 4/17/19

PAGE # 3  
 Number of pages: 3  
 19-2022-P2

© Copyright, 2019 Ramsay Signs, Inc.  
 DESIGN & SALES PRINTED FOR POTENTIAL, PROVISION & ACCURACY  
 This document is the property of Ramsay Signs, Inc. It is intended for use by the client only. It is not to be reproduced, stored in a retrieval system, or transmitted in any form or by any means, electronic, mechanical, photocopying, recording, or by any information storage and retrieval system, without the prior written permission of Ramsay Signs, Inc. All rights reserved.

171 Signage and Building Statement for each permittee. This sign is intended to be installed on the building facade. This includes other applicable local codes. This includes proper mounting and handling of the sign. Should be either directly installed on the building facade or mounted on a separate stand or sign structure with the sign.



| Revisions: | Client Approval + Date | Landlord Approval + Date |
|------------|------------------------|--------------------------|
| (1)        |                        |                          |

Date: 01.25.19  
 Project Manager: Darrin Hauer  
 Designer: Rick Rule

Client:  
 Common Grounds  
 630 NW 4th Ave.  
 Portland, OR 97209  
 503.777.4555  
 800.613.4555  
 Fax 503.777.0020  
 ramsaysigns.com

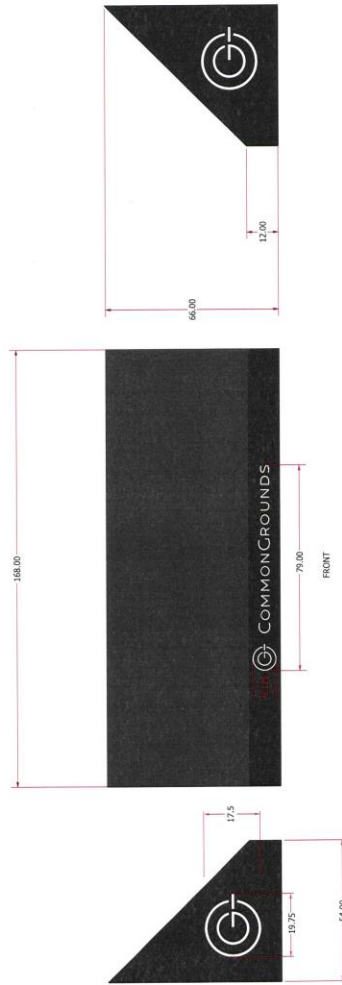


C-1

C-1

# PORTLAND AWNING

PRIMARY LOGO ON THE VALANCE  
LOGOMARK ON THE LEFT AND RIGHT SIDES



\*Approved\*  
 City of Portland  
 Bureau of Development Services  
 Planner [Signature]  
 Date 6/24/19  
 \* This approval applies only to the reviews requested and is subject to all conditions of approval. Additional zoning requirements may apply.

02



02