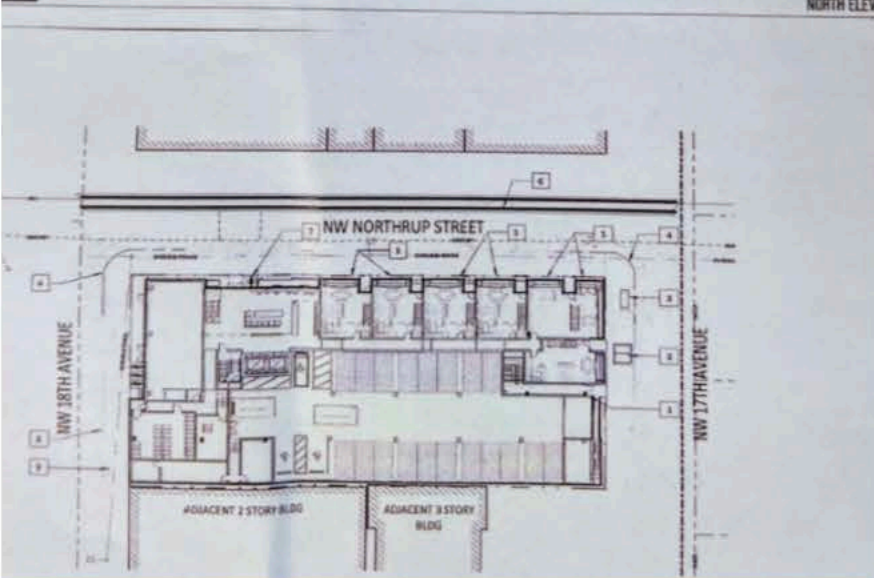


# Development Notice

PRELIMINARY DRAFT



OTHER PROJECT INFO: [www.ZEF.com/3467SEmain](http://www.ZEF.com/3467SEmain)



3467  
SE Main Street



45  
feet



Upper floors residential  
Ground floors retail



No off-street  
parking



Check [www.PortlandMaps.com](http://www.PortlandMaps.com) for latest application status

Applicant created this sign on January 5, 2020. The City has not reviewed the content of this sign.  
The project may change after the sign is posted.

**AN APPLICATION WILL BE  
SUBMITTED TO THE CITY FOR  
FUTURE CHANGES ON THIS SITE.**

## MEETING INFO

8.5" x 11" Sheet  
Informational Meeting

January 23  
6 - 8 p.m.  
Community Center  
123 SE Big St.

District Coalition:  
SE Uplift - 503-232-0010  
[info@southeastuplift.org](mailto:info@southeastuplift.org)

Neighborhood Association:  
Hosford Abernethy  
[landuse@handpdx.org](mailto:landuse@handpdx.org)

General Zoning Info:  
Bureau of Development Services  
503-823-7526

The applicant will provide language services, auxiliary aids, alternative formats, or other reasonable accommodations for barrier-free access if requested at least 3 days prior to the meeting. Contact the applicant for accommodations.

Learn how developments like this go through the zoning and land use process:

[www.PortlandOregon.gov/BDS/NeighborhoodResources](http://www.PortlandOregon.gov/BDS/NeighborhoodResources)

**Applicant:** DEF Development • [www.def.com](http://www.def.com)

**Contact:** Jane Doe 503.456.8910 • [applicant@def.com](mailto:applicant@def.com)

TIMELINE



1  
NEIGHBORHOOD  
CONTACT  
DEVELOPMENT  
NOTICE



2  
LAND USE  
REVIEW  
(FOR SOME PROJECTS)



3  
LAND USE  
PUBLIC  
HEARING  
(FOR SOME PROJECTS)



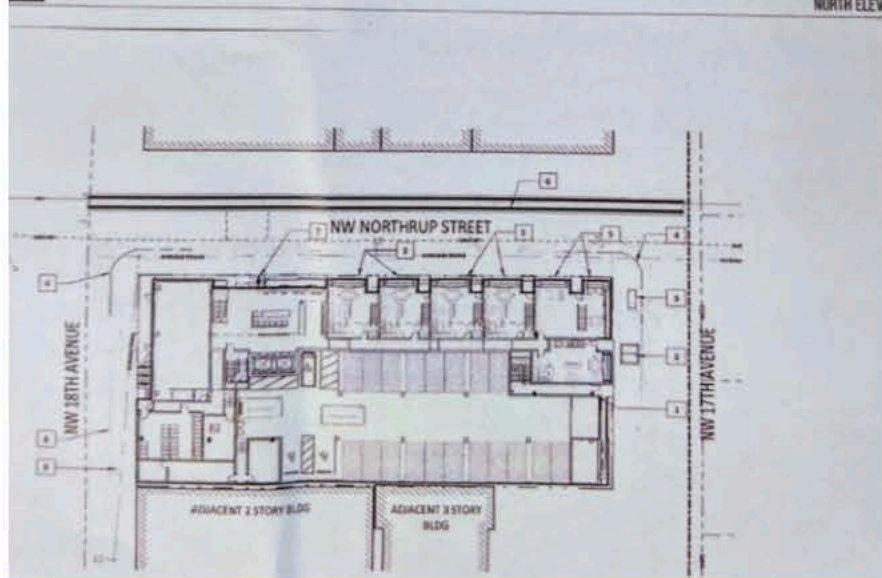
4  
BUILDING  
PERMIT  
REVIEW



5  
CONSTRUCTION

# Development Notice

PRELIMINARY DRAFT



OTHER PROJECT INFO: [www.ZEF.com/3467SEmain](http://www.ZEF.com/3467SEmain)



3467  
SE Main Street



45  
feet



Upper floors residential  
Ground floors retail



No off-street  
parking



Check [www.PortlandMaps.com](http://www.PortlandMaps.com) for latest application status

Applicant created this sign on January 5, 2020. The City has not reviewed the content of this sign.  
The project may change after the sign is posted.

**AN APPLICATION WILL BE  
SUBMITTED TO THE CITY FOR  
FUTURE CHANGES ON THIS SITE.**

No meeting is  
required for  
this project

(Portland City Code  
33.705.020)

District Coalition:  
SE Uplift - 503-232-0010  
[info@southeastuplift.org](mailto:info@southeastuplift.org)

Neighborhood Association:  
Hosford Abernethy  
[landuse@handpdx.org](mailto:landuse@handpdx.org)

General Zoning Info:  
Bureau of Development Services  
503-823-7526

The applicant will provide language services, auxiliary aids, alternative formats, or other reasonable accommodations for barrier-free access if requested at least 3 days prior to the meeting. Contact the applicant for accommodations.

Learn how developments like this go through the zoning and land use process:

[www.PortlandOregon.gov/BDS/NeighborhoodResources](http://www.PortlandOregon.gov/BDS/NeighborhoodResources)

**Applicant:** DEF Development • [www.def.com](http://www.def.com)

**Contact:** Jane Doe 503.456.8910 • [applicant@def.com](mailto:applicant@def.com)

TIMELINE



1  
NEIGHBORHOOD  
CONTACT  
DEVELOPMENT  
NOTICE



2  
LAND USE  
REVIEW  
(FOR SOME PROJECTS)



3  
LAND USE  
PUBLIC  
HEARING  
(FOR SOME PROJECTS)



4  
BUILDING  
PERMIT  
REVIEW



5  
CONSTRUCTION