

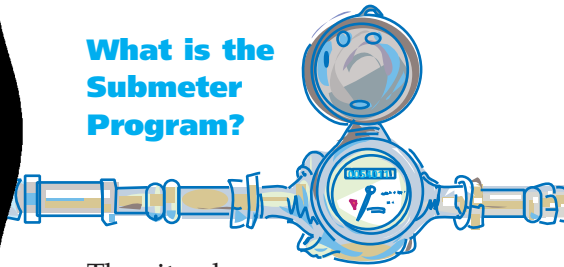
# Construction Projects and Sewer Charges

working for  
clean rivers,  
healthy  
watersheds,  
and a livable,  
sustainable  
community

## What can I expect during Plan Review?

The City of Portland issues several kinds of permits for construction projects. When you apply for your permits, several bureaus will review your application to see that your plans meet with current code requirements. If the reviewers find any deficiencies in your plans, you will receive a checksheet that documents requirements for your project. Enrolling in the city's Submeter Program may be one of those requirements.

## What is the Submeter Program?



The city charges fees for water generated as a result of construction activities or other means that is discharged into the city sewer system. The Submeter Program determines sewer user charges based on the volume of water discharged into the system. Volume information must be collected and reported as part of the city's Submeter Program.

The city will assess sewer charges based on the volume of water discharged into the public sewer. The applicant must measure and report the volume of water discharged for billing purposes unless BES determines that the discharge volume is minimal.

## When are meters required? During Construction Activity

A discharge meter may be required when water is generated on a project site as a result of construction activity and conveyed to a public sewer. If a meter is required, it must be installed in a location that easily facilitates reporting of discharge information. A representative of the Submeter Program will approve installation and meter placement. As an alternative, the city may approve other acceptable means of determining the quantity of water discharged into the public sewer.

## Post-Construction Activity

Meter installation will be required if long-term dewatering will occur at a site and this water is discharged to the public sewer. The city will require the installation of a Remote Access Reader if the meter cannot be placed in a location that is easily accessible from the street. The reader must register in cubic feet and must be installed at street-level to facilitate reporting of discharge information.

**All meters must  
register in cubic feet.**

## Construction Dewatering? Groundwater?

**Construction and Groundwater Discharge Submeter Application** is required if water is generated during the course of construction activity or if ongoing dewatering activities will take



ENVIRONMENTAL SERVICES  
CITY OF PORTLAND  
working for clean rivers

Sam Adams, Commissioner  
Dean Marriott, Director

place. Application must be made to the city to confirm and document your participation in the Submeter Program. This will trigger an inspection by city personnel near the construction start date.

### **What does this mean to you?**

If it is identified that groundwater will be discharged to the public sewer system during or after construction, the applicant must:

- Complete a Construction and Groundwater Discharge Submeter Application during plan review
- Provide name/contact information for the billable responsible party during and post-construction
- Identify the discharge meter location(s) in your building plan
- Provide a meter specification sheet with your building plan
- Identify the date construction activities will begin/end
- Contact Environmental Services at 503-823-7856 to set up a Submeter Account

### **Groundwater to a Storm Sewer**

Groundwater conveyed to a storm sewer, which discharges to a surface water body such as a river or stream may need to be authorized or permitted prior to discharge. In some cases, treatment may also be necessary. For more information on this requirement, contact the Environmental Services Industrial Stormwater Program at 503-823-7584.

### **Brownfields**

The City may ask you to supply additional information if the construction site is a brownfield, adjacent to a brownfield or potentially impacted by a brownfield.

### **What is subject to sewer charges?**

Sewer charges are billed to any customer that discharges water into the public sewer system. Environmental Services has specific rates for discharges to the storm, combined or sanitary sewer. (Note: Discharges to the combined sewer system incur the sanitary sewer rate.)

### **What isn't subject to sewer charges?**

The City may not charge for stormwater runoff from construction sites to the storm sewer system. Stormwater management charges on city utility bills support drainage services. Exceptions may apply.

### **Are there costs associated with this program?**

A commercial or industrial customer must install a special meter for each system that accounts for the volume of water entering the city sewer system. Sewer user charges will be applied to the responsible party's sewer bill. Complete sewer rates are listed in City Code 17.36 and are available online at [www.portlandonline.com/auditor](http://www.portlandonline.com/auditor).

Purchasing, installing and maintaining meters is the responsibility of the owner. The city assesses an administrative charge per meter per bill.

### **Submeter Program Questions?**

Call Environmental Services at 503-823-7856 for more information.