

# LOG OF Boring P-1

Laboratory Test Results  
or Remarks

Blows/6"  
N-Values  
Moisture  
Content(%)  
Dry  
Dens.(pcf)

Depth(ft)  
Sample

Equipment Hand Auger  
Elevation 13.4 Date 9/27/07

SILT (ML); brown to dark gray with orange mottles; trace to some clay; moist to wet.

▽  
at time of drilling

Piezometer installed at 10 feet bgs.

End of boring at 10.5 feet. Groundwater observed at 8 feet bgs.

COP\_BES 8576 OAKS BOTTOM.GPJ 3/14/08

**\*\* Elevations from C.O.P Survey (NAD83/91 Datum).**



**CITY OF PORTLAND**  
ENVIRONMENTAL SERVICES  
MATERIALS TESTING LABORATORY

**Oaks Bottom  
Springwater Trail  
Portland, Oregon**

PLATE

JOB NUMBER  
**BES 8576**

APPROVED

DATE  
**3/14/08**

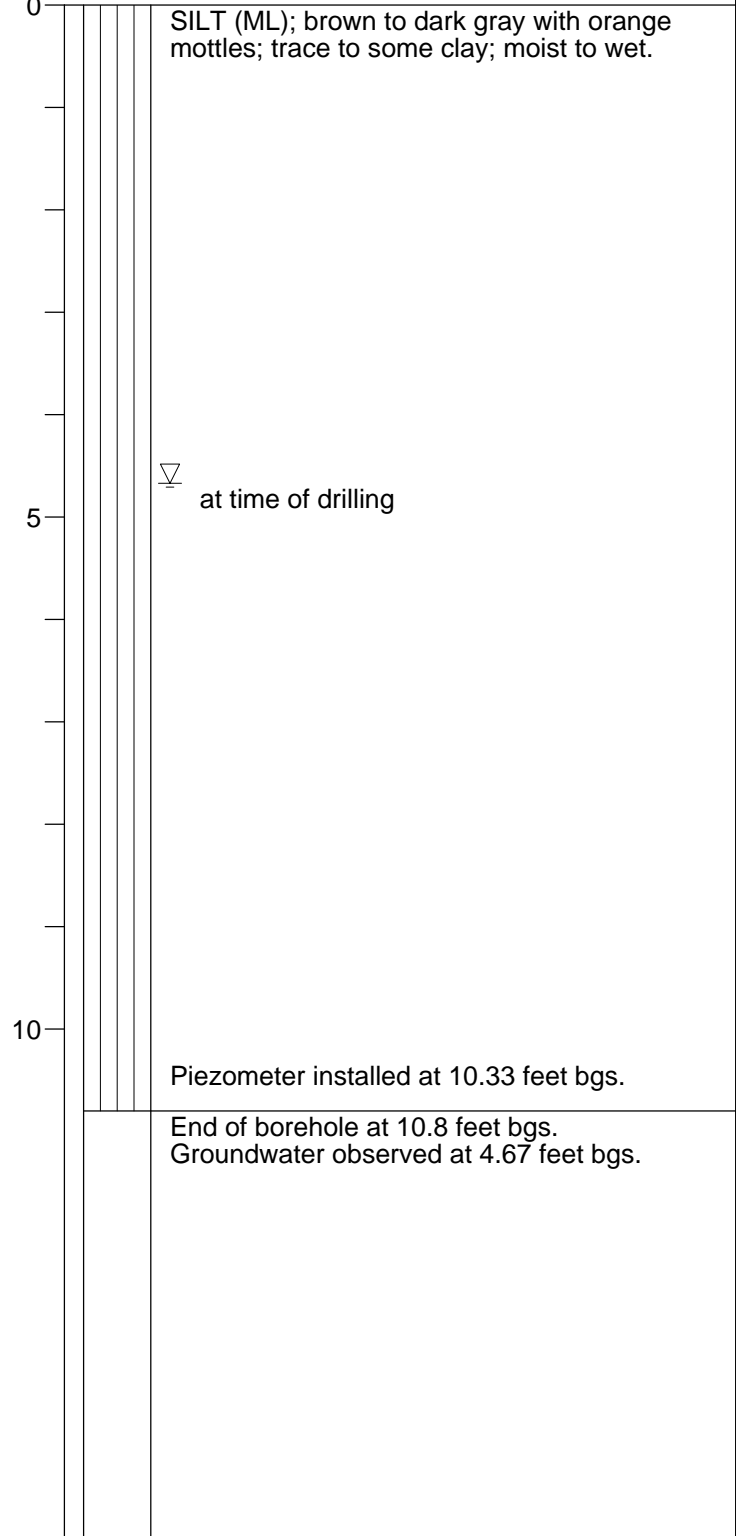
# LOG OF Boring P-2

Laboratory Test Results  
or Remarks

Blows/6"  
N-Values  
Moisture  
Content(%)  
Dry  
Dens.(pcf)

Depth(ft)  
Sample

Equipment Hand Auger  
Elevation 12.0 Date 9/27/07



COP\_BES 8576 OAKS BOTTOM.GPJ 3/14/08

**\*\* Elevations from C.O.P Survey (NAD83/91 Datum).**



**CITY OF PORTLAND**  
ENVIRONMENTAL SERVICES  
MATERIALS TESTING LABORATORY

**Oaks Bottom**  
**Springwater Trail**  
**Portland, Oregon**

PLATE

JOB NUMBER  
**BES 8576**

APPROVED

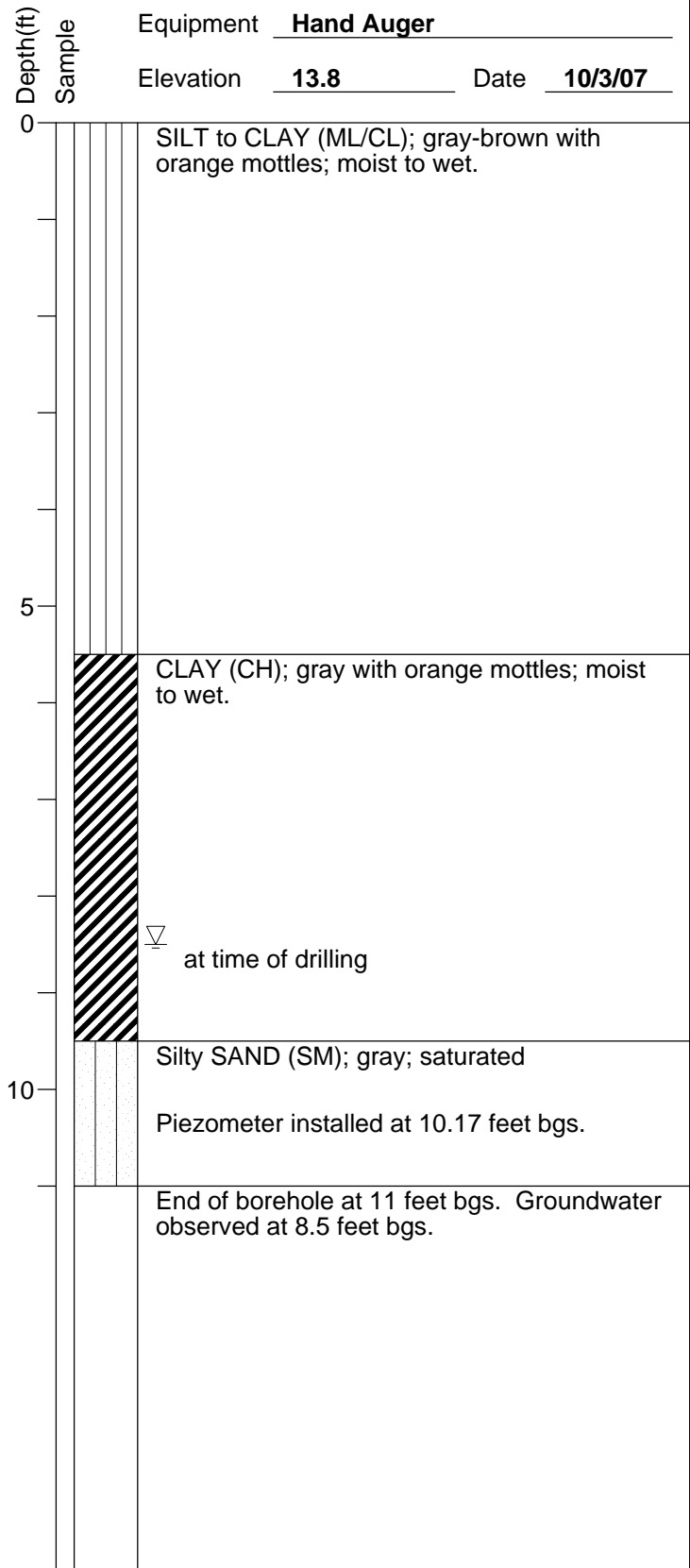
DATE  
**3/14/08**

# LOG OF Boring P-3

Laboratory Test Results  
or Remarks

Blows/6"  
N-Values  
Moisture  
Content(%)  
Dry  
Dens.(pcf)

Equipment Hand Auger  
Elevation 13.8 Date 10/3/07



COP\_BES 8576 OAKS BOTTOM.GPJ 3/14/08

**\*\* Elevations from C.O.P Survey (NAD83/91 Datum).**



**CITY OF PORTLAND**  
ENVIRONMENTAL SERVICES  
MATERIALS TESTING LABORATORY

**Oaks Bottom**  
**Springwater Trail**  
**Portland, Oregon**

PLATE

JOB NUMBER  
**BES 8576**

APPROVED

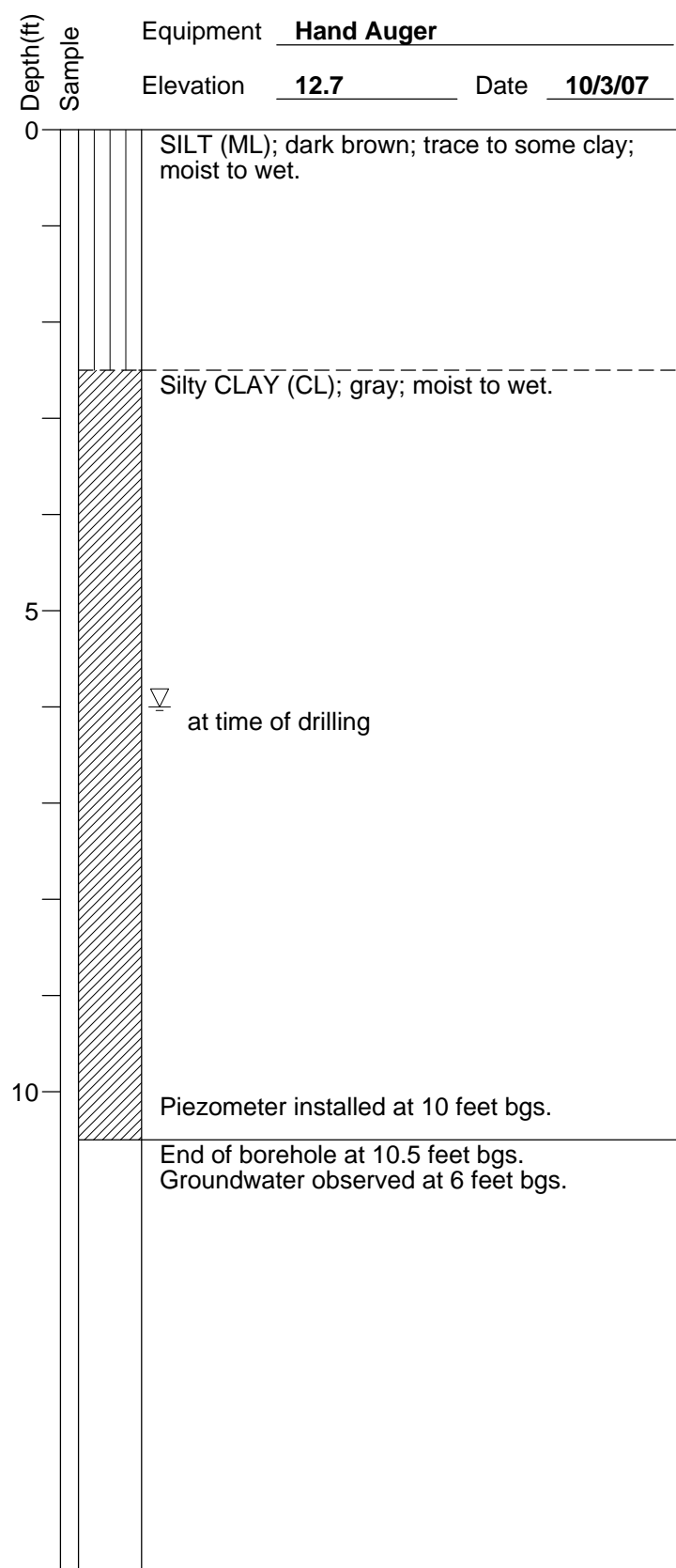
DATE  
**3/14/08**

# LOG OF Boring P-4

Laboratory Test Results  
or Remarks

Blows/6"  
N-Values  
Moisture  
Content(%)  
Dry  
Dens.(pcf)

Equipment Hand Auger  
Elevation 12.7 Date 10/3/07



COP\_BES 8576 OAKS BOTTOM.GPJ 3/14/08

**\*\* Elevations from C.O.P Survey (NAD83/91 Datum).**



**CITY OF PORTLAND**  
ENVIRONMENTAL SERVICES  
MATERIALS TESTING LABORATORY

**Oaks Bottom**  
**Springwater Trail**  
**Portland, Oregon**

PLATE

JOB NUMBER  
**BES 8576**

APPROVED

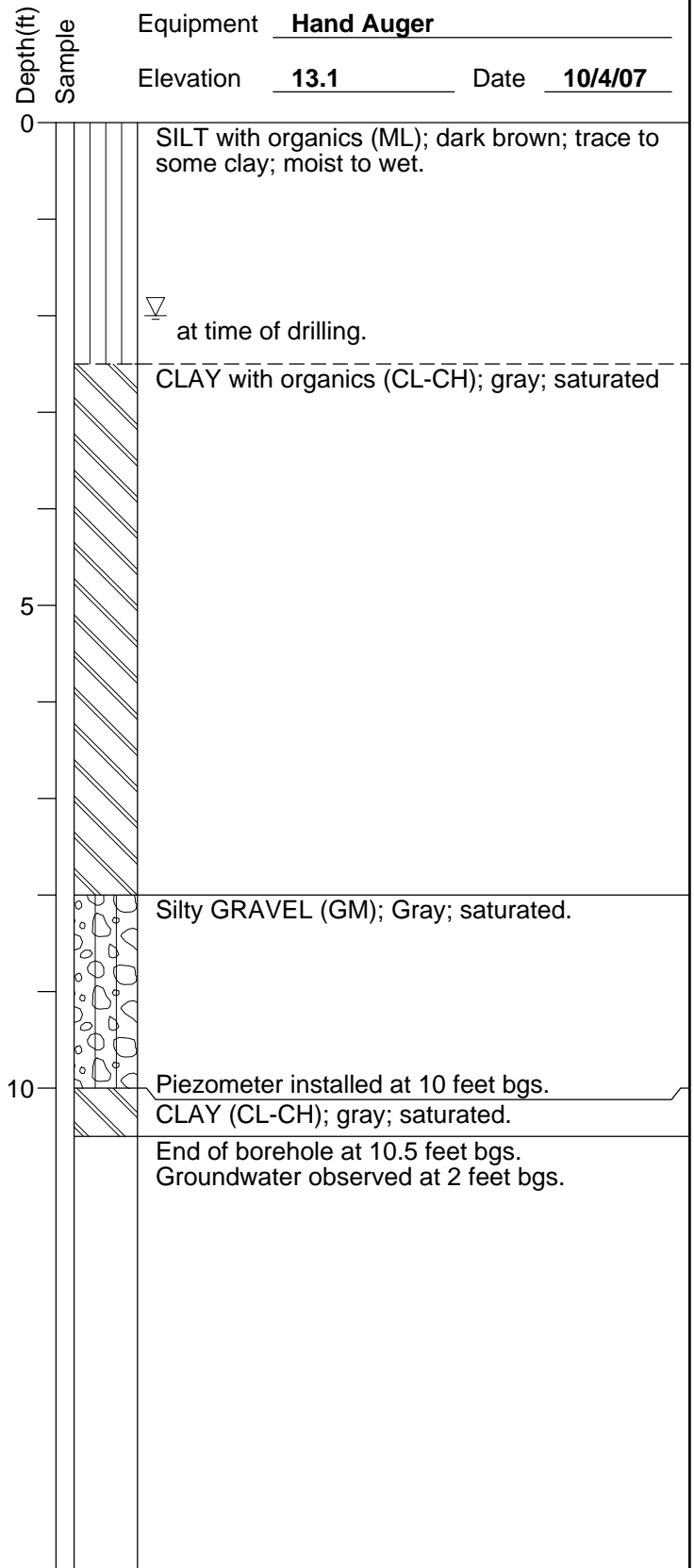
DATE  
**3/14/08**

# LOG OF Boring P-5

Laboratory Test Results  
or Remarks

Blows/6"  
N-Values  
Moisture  
Content(%)  
Dry  
Dens.(pcf)

Equipment Hand Auger  
Elevation 13.1 Date 10/4/07



COP\_BES 8576 OAKS BOTTOM.GPJ 3/14/08

**\*\* Elevations from C.O.P Survey (NAD83/91 Datum).**



**CITY OF PORTLAND**  
ENVIRONMENTAL SERVICES  
MATERIALS TESTING LABORATORY

**Oaks Bottom**  
**Springwater Trail**  
**Portland, Oregon**

PLATE

JOB NUMBER  
**BES 8576**

APPROVED

DATE  
**3/14/08**