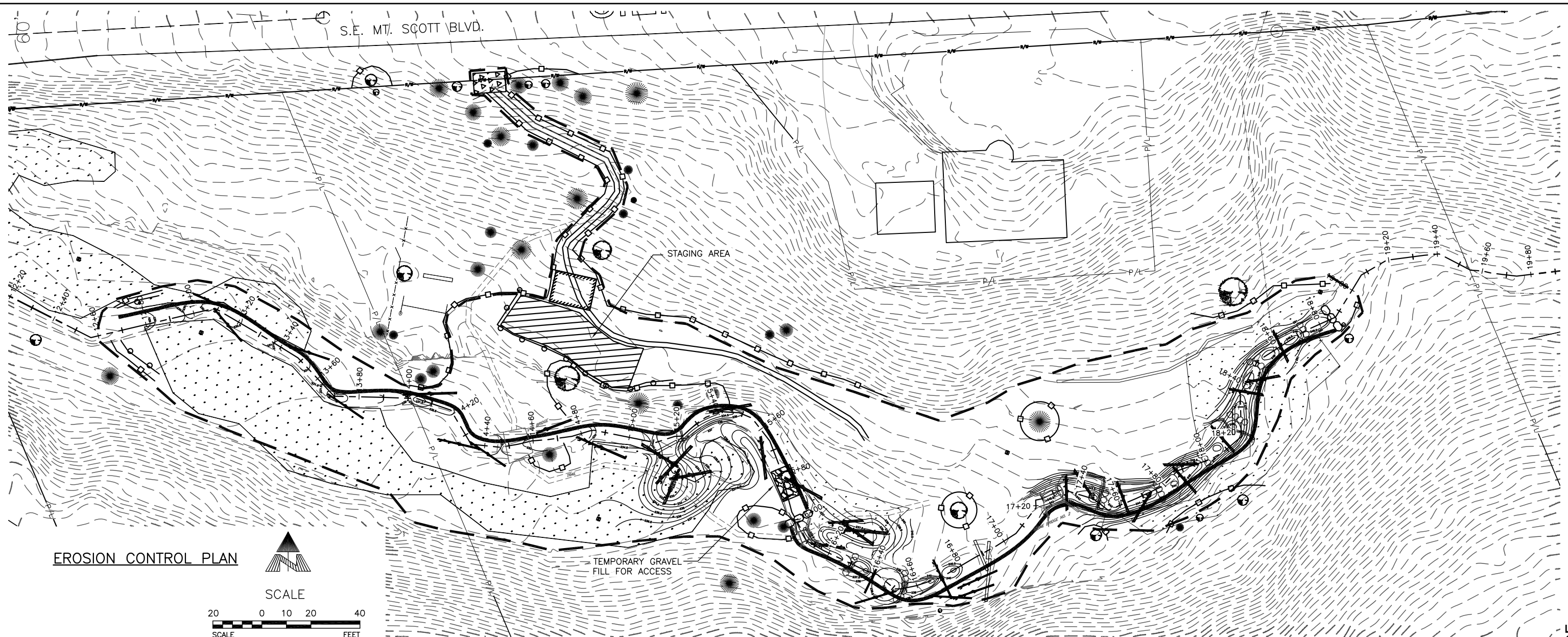
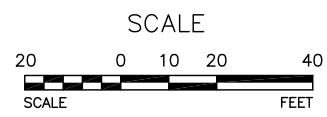


D:\CAD_PROJECTS\E1XXXX_VETERANS_CREEK\DWG\E1XXXX_CE01.DWG 6/4/2013 2:22:44 PM JOHND



EROSION CONTROL PLAN



LEGEND:

	EXISTING TRAIL		STAGING AREA
	PROPOSED ACCESS		TEMPORARY DIVERSION DAM
	AREA OF EXISTING WETLAND (15,346 sq.ft)		FLEXIBLE DIVERSION PIPE
	SURVEY CONTROL/TEMPORARY BENCHMARK		GRAVEL CONSTRUCTION ACCESS
	PROPOSED HABITAT LOG		
	EXISTING LOG		
	EXCLUSION ZONE FENCE		
	WORK AREA LIMIT		
	SEDIMENT FENCE		

- NOTES:**
- UTILITY BUILDING, SWING SET, SLIDE AND WOODEN FENCE TO BE REMOVED.
 - IN-WATER WORK AREA EXTENDS FROM STA.12+60 TO STA.19+00.
 - DISTURBANCE AREA IS 0.81 ACRES, WHICH INCLUDES TEMPORARY ACCESS.
 - FLOW DIVERSION IS ANTICIPATED TO OCCUR IN TWO PHASES. ONE PHASE WILL DEWATER CHANNEL FROM STA.12+80 TO STA.16+00. THE OTHER PHASE WILL DEWATER CHANNEL FROM STA.16+00 TO STA.18+88. DEWATERING WILL BE ACCOMPLISHED USING TEMPORARY DAMS (SANDBAGS STACKED AND WRAPPED IN VISQUEEN) AND EITHER FLEXIBLE PIPE OR A PUMP WITH FLEXIBLE HOSE.

GENERAL NOTES FOR EROSION, SEDIMENT AND POLLUTANT CONTROL

- EROSION, SEDIMENT AND POLLUTANT CONTROL IS REQUIRED FOR THIS PROJECT.
- PREPARE AN EROSION, SEDIMENT AND POLLUTANT CONTROL PLAN (ESPCP) BEFORE BEGINNING WORK. KEEP A COPY OF THE ESPCP AND THE CITY EROSION AND SEDIMENT CONTROL MANUAL (MARCH 2008) ON SITE AT ALL TIMES DURING THE PROJECT.
- THE EROSION AND SEDIMENT CONTROL FACILITIES SHOWN ON THIS PLAN ARE THE MINIMUM REQUIREMENTS FOR THE ANTICIPATED SITE AND SEASONAL CONDITIONS. UPGRADE THESE FACILITIES TO ADDRESS CHANGING WORK OR WEATHER CONDITIONS.
- SELECT BEST MANAGEMENT PRACTICES (BMPs) FROM THE FOLLOWING DOCUMENTS: 1) THE CITY OF PORTLAND EROSION AND SEDIMENT CONTROL MANUAL; 2) THE STANDARD CONSTRUCTION SPECIFICATIONS AND 3) THE PROJECT SPECIAL PROVISIONS.
- INSTALL, MONITOR, REPLACE AND UPGRADE ALL FACILITIES AND MEASURES. PERFORM MAINTENANCE TO ENSURE THEIR CONTINUED FUNCTIONING.
- INSPECT AND MAINTAIN ALL FACILITIES AND MEASURES UNTIL WORK AREAS ARE RESURFACED OR STABILIZED.
- COMPLETE AN EROSION CONTROL MONITORING FORM AFTER EACH INSPECTION. INCLUDE THE INSPECTION DATE AND TIME. RETAIN THESE COMPLETED FORMS ON SITE AND PROVIDE THEM UPON REQUEST.
- NO VISIBLE AND MEASURABLE SEDIMENT OR POLLUTANT SHALL EXIT THE SITE, ENTER A PUBLIC RIGHT-OF-WAY OR BE DEPOSITED INTO ANY WATER BODY OR STORM DRAINAGE SYSTEM.
- FOLLOWING A STORM EVENT, INSPECT AND ADJUST, REPAIR, IMPROVE OR REPLACE ALL DEFICIENT OR FAILING FACILITIES AND MEASURES.
- PROTECT ALL FUNCTIONING STORM WATER INLETS AND CATCH BASINS FROM RECEIVING UNFILTERED SEDIMENT-LADEN RUNOFF.
- REMOVE SEDIMENT AND DEBRIS FROM INLETS AND CATCH BASINS BEFORE PAVING. DO NOT FLUSH SEDIMENT-LADEN WATER INTO THE DOWNSTREAM SYSTEM.
- STABILIZE ALL EXPOSED SOIL IMMEDIATELY FOLLOWING GROUND DISTURBING ACTIVITY.
- STABILIZE AND PROTECT STOCKPILED SOIL WITH APPROVED MEASURES.
- REMOVE EROSION AND SEDIMENT CONTROL FACILITIES AFTER THE PROJECT IS COMPLETED AND ACCEPTED.
- STAGING AREAS, ACCESS ROUTES AND STREAMBANKS THAT ARE DISTURBED DURING CONSTRUCTION WILL BE RIPPED AND SEEDED. EROSION CONTROL FABRICS WILL BE PLACED AND STAKED.

XREF(S) USED: E1XXXX_XDSGN, E1XXXX_XSUR E1XXXX_XBMAP		DESIGNED BY: _____	DATE APPD: _____
ROTATION ANGLE: _____		DRAWN BY: _____	PROGRAM MGR: _____
CONSTRUCTED BY: _____		CHECKED BY: _____	CONST. MGR: _____
PROJECT COMPLETED: _____		DESIGN MGR: _____	
MAP CORRECTED BY: _____			
CHECKED BY: _____			
DRAWING NAME: E1XXXX_CE01			
NO.	DATE	DESCRIPTION	APPD.
		REVISION	

CITY OF PORTLAND
ENVIRONMENTAL SERVICES

REGISTERED PROFESSIONAL ENGINEER
99999
OREGON
JUNE 01, 2000
JOHN Q. ENGINEER
Expires XX/XX/20XX

90%

**VETERANS CREEK
STREAM RESTORATION PROJECT**

EROSION CONTROL PLAN

1/4 SECTION	3840
JOB NO.	E1XXXX
SHEET NO.	CE01
	6 OF 9

3_SAMPLE_EROSION_STREAM.PDF