



SHED AND KIOSK ECOROOF REPORT: NE 72nd AVE COMMUNITY GARDEN

Background and Community Partners:

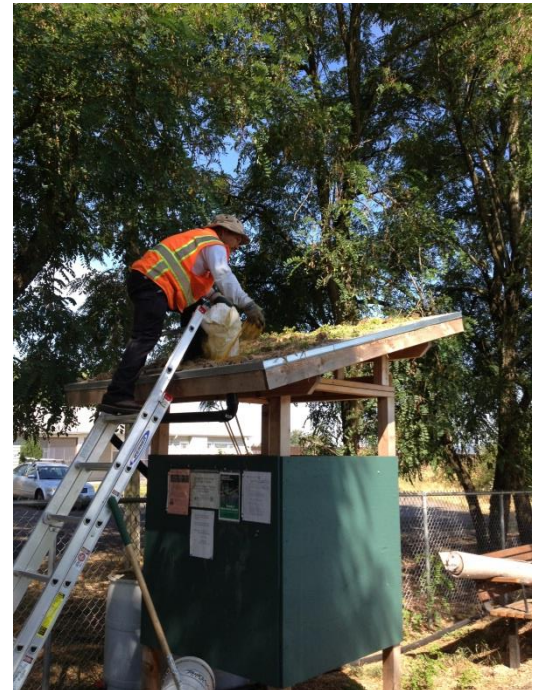
This report features a 224sf garden shed ecoroof and a 42sf information kiosk ecoroof.

The shed and kiosk are part of **the NE 72nd Ave Community Garden**, the first construction element in the development of **Cully Park**. The garden set the model for the park's design and construction activities, a community-led project organized by the Let Us Build Cully Park!/LUBCP! coalition.

The LUBCP! coalition is a collaboration of 15+ community-based organizations brought together by Verde and partners to create access to nature, create healthy recreation opportunities, redress a long-standing absence of a park in Cully, educate youth, create economic opportunity for low-income people to participate in the green economy, and build environmental wealth.

Opened in October 2012, the .68 acre garden facility has 16 large plots (each can be divided into a subplot as small as 5'x10'), a 1325sf group plot, 7 accessible raised beds, a rain garden, a garden shed and an information kiosk. Ecoroofs on the shed and kiosk were completed in summer 2013.

Construction was led by **Verde**, a Portland based non-profit organization that serves communities by building environmental wealth through social enterprise, outreach



Verde Landscape Crew Member Abel Perez adds cornmeal as soil fertilizer.

and advocacy. As a social enterprise, Verde Landscape provides Crew Members with good wages, benefits, and job training.

In addition to formal training, the Landscape enterprise takes advantage of on-the-job training opportunities for new scopes of work. For this project, 2 Landscape Crew Members worked with **Ecoroofs Everywhere** for 8 hours. The Ecoroofs Everywhere team welded membrane and provided technical assistance to the Verde crew, who then installed fabric, soil, drainage channel, cap flashing, and plants. Ecoroofs Everywhere also donated plants.



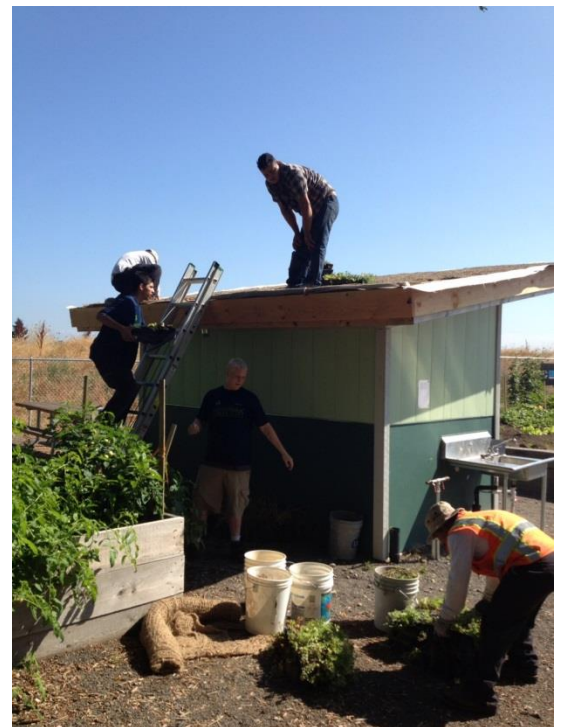
Green Team youth unload soil into buckets on site.

environmental careers, and how to be change agents to make underserved neighborhood environments more livable.

Green Team participants helped by unloading and loading soil for the roofs. They also painted rain barrels and weeded around the garden site. 10 youth participants worked for a combined total of 30 hours.

In a continuation of their Fall 2012 work constructing the informational kiosk, **Groundwork Portland's** Summer 2013 Green Team joined Verde Landscape and Ecoroofs Everywhere to install the ecoroofs.

Green Teams are a 6-week summer program where teams of diverse youth gain job skills and build awareness of environmental justice and conservation issues through brownfields reclamation, watershed restoration, and environmental stewardship. Participants learn about civic engagement,

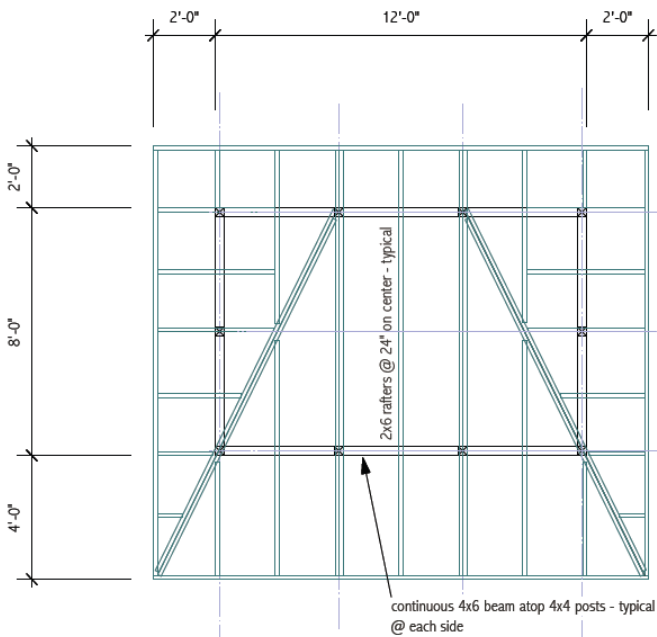
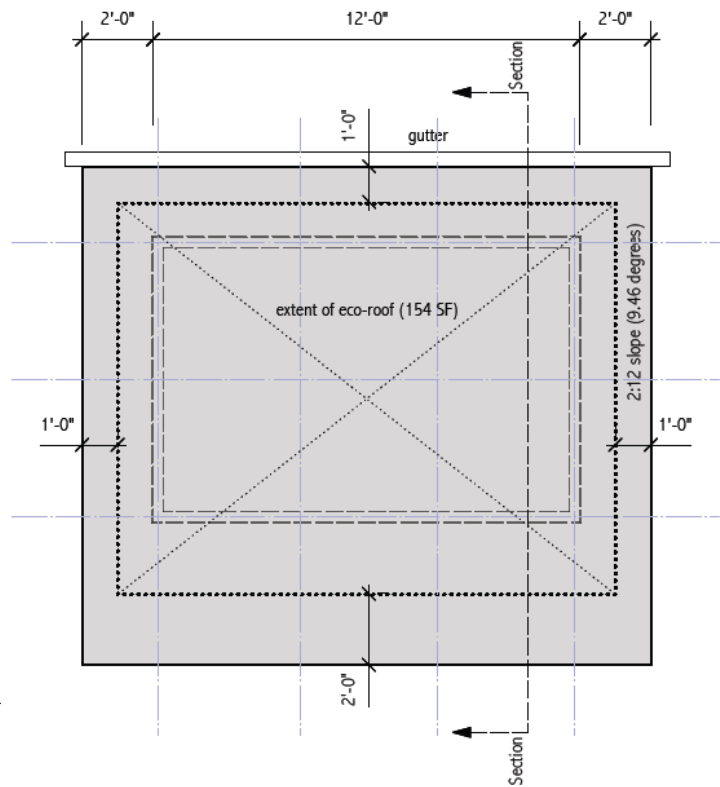


Verde, Ecoroofs Everywhere, and Green Team participants load plants on to the shed roof.

Technical Information:

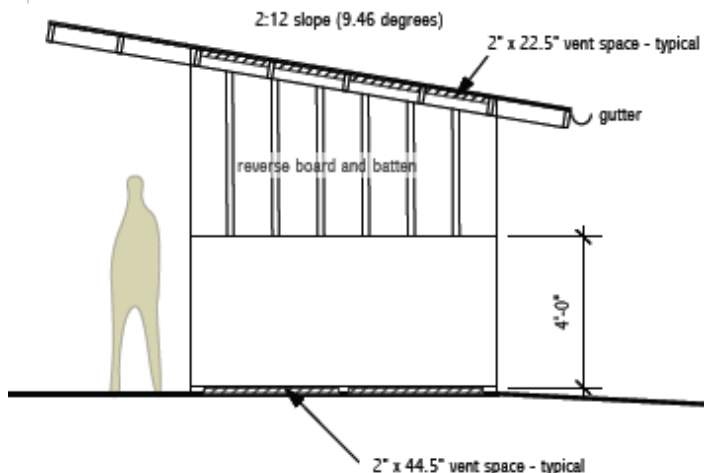
The shed's ecoroof measures 16x14 ft, a total of 224sf. Some plants used include:

Sedum cuttings 200lb/1000sf.

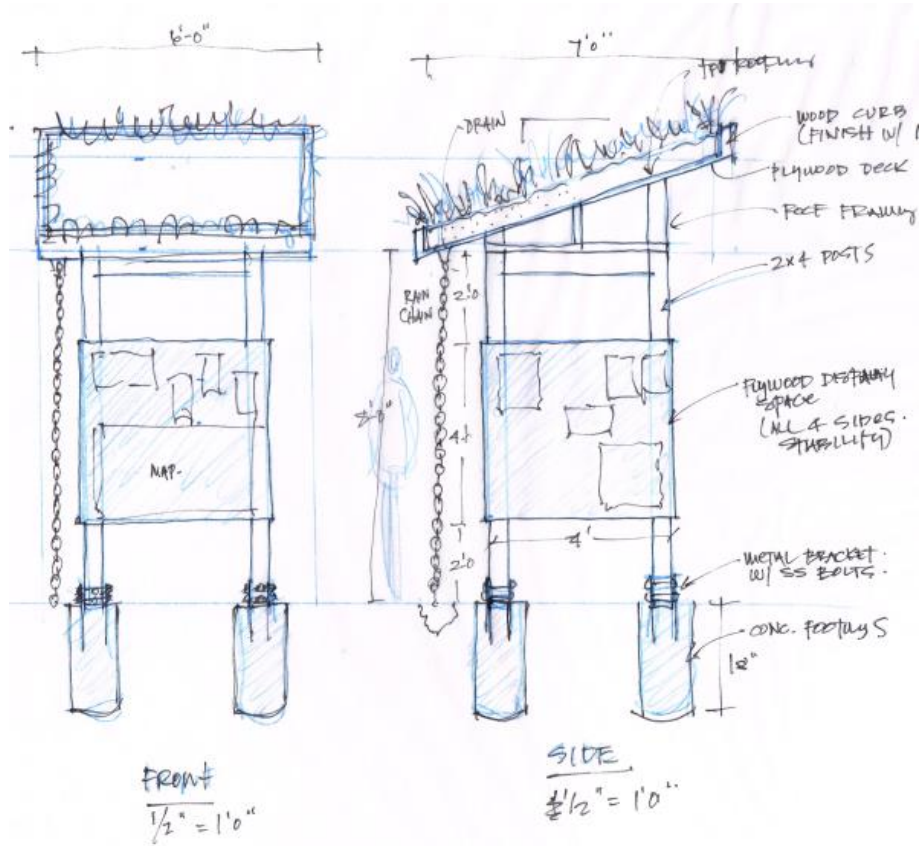


Terrafluxus provided landscape architecture services, including the designs for these structures.

The shed's roof is raised to allow for ventilation, a requirement due to methane gas presence. The park site is a brownfield, and the garden is adjacent to a capped landfill with methane release facilities.



Kiosk rough sketches:



Finished Kiosk ecoroof.



Finished Shed ecoroof.

Project Cost:

item	Description	price
1	Kiosk Green Roof Install 42sf of 60 mil Thermal Plastic roof membrane. Install 42sf of 24oz fiber pad. Install 26lf of galvanized cap flashing 1"x 1-1/8" x 2". Provide and install 6lf of geo-edge edger with rock band. Install 4" deep of progro mix lightweight soil. Install sedum cuttings 200lb/1000sf. Connect downspouts to rain barrels.	\$ 590.00
2	Shed Green Roof Install 224sf of 60 mil Thermal Plastic roof membrane. Install 224sf of 24oz fiber pad. Install 60lf of galvanized cap flashing 1"x 1-1/8" x 2". Provide and install 16lf of geo-edge edger with rock band. Install 4" deep of progro mix lightweight soil. Install sedum cuttings 200lb/1000sf. Connect downspouts to rain barrels	\$ 3,140.00
	Grand Total:	\$ 3,730.00