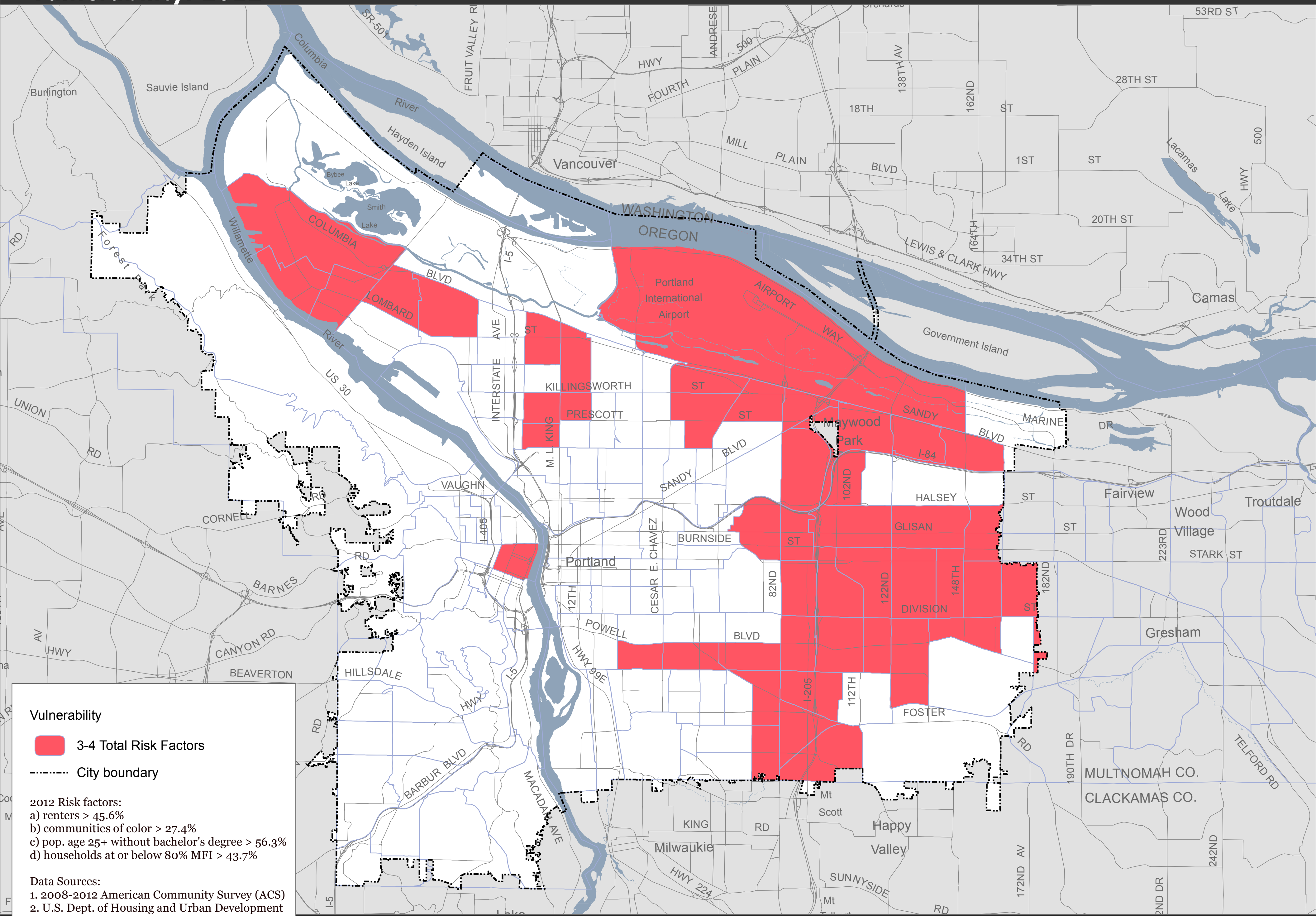


# Vulnerability: 2012



**Vulnerability**

- 3-4 Total Risk Factors
- City boundary

2012 Risk factors:

- a) renters > 45.6%
- b) communities of color > 27.4%
- c) pop. age 25+ without bachelor's degree > 56.3%
- d) households at or below 80% MFI > 43.7%

Data Sources:

1. 2008-2012 American Community Survey (ACS)
2. U.S. Dept. of Housing and Urban Development CHAS Data, 2007-2011



S:\gis\Projects\Gentrification\_Risk\Maps\Vulnerability2012.mxd