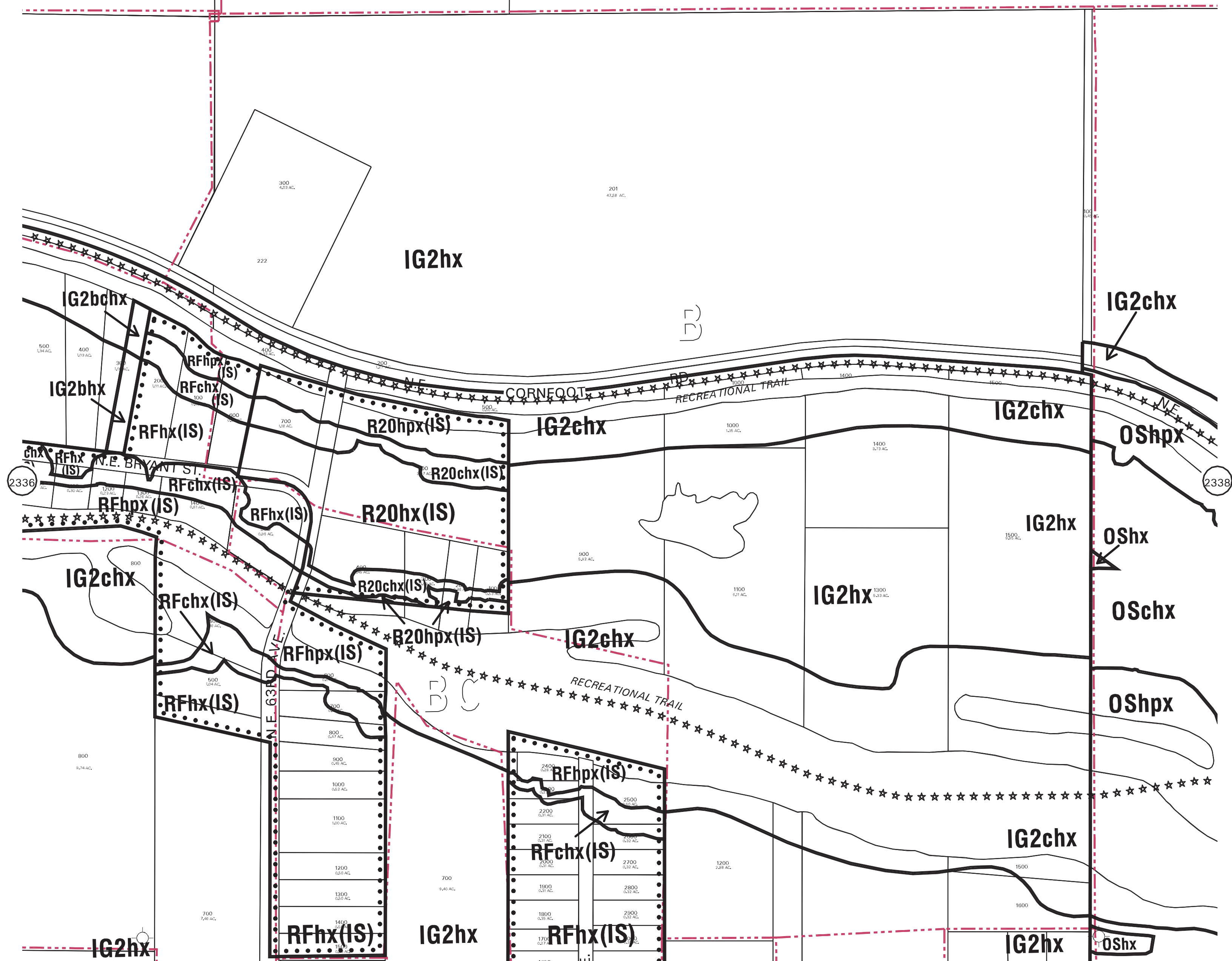


IG2hx



NOTE: This entire 1/4 section lies within the PORTLAND INTERNATIONAL AIRPORT PLAN DISTRICT

Plan District Boundary

Historic or Conservation District or N.R.M.P. Boundary

Zoning Line

NOTE: Zoning designations are subject to change; verify zoning prior to development or sales.

R10 Current Zoning ●●●●● Maximum Potential Zoning as per Comprehensive Plan - - - - State ID Map Boundary	ZONING REVISED: 07-02-2015	CITY OF PORTLAND, BUREAU OF PLANNING & SUSTAINABILITY
	BASEMAP ACQUIRED: 07 - 2010	0' 100' 200' 300' SCALE IN FEET
	LEGAL DESCRIPTION: NW 1/4 SEC. 17 - 1N - 2E	2337