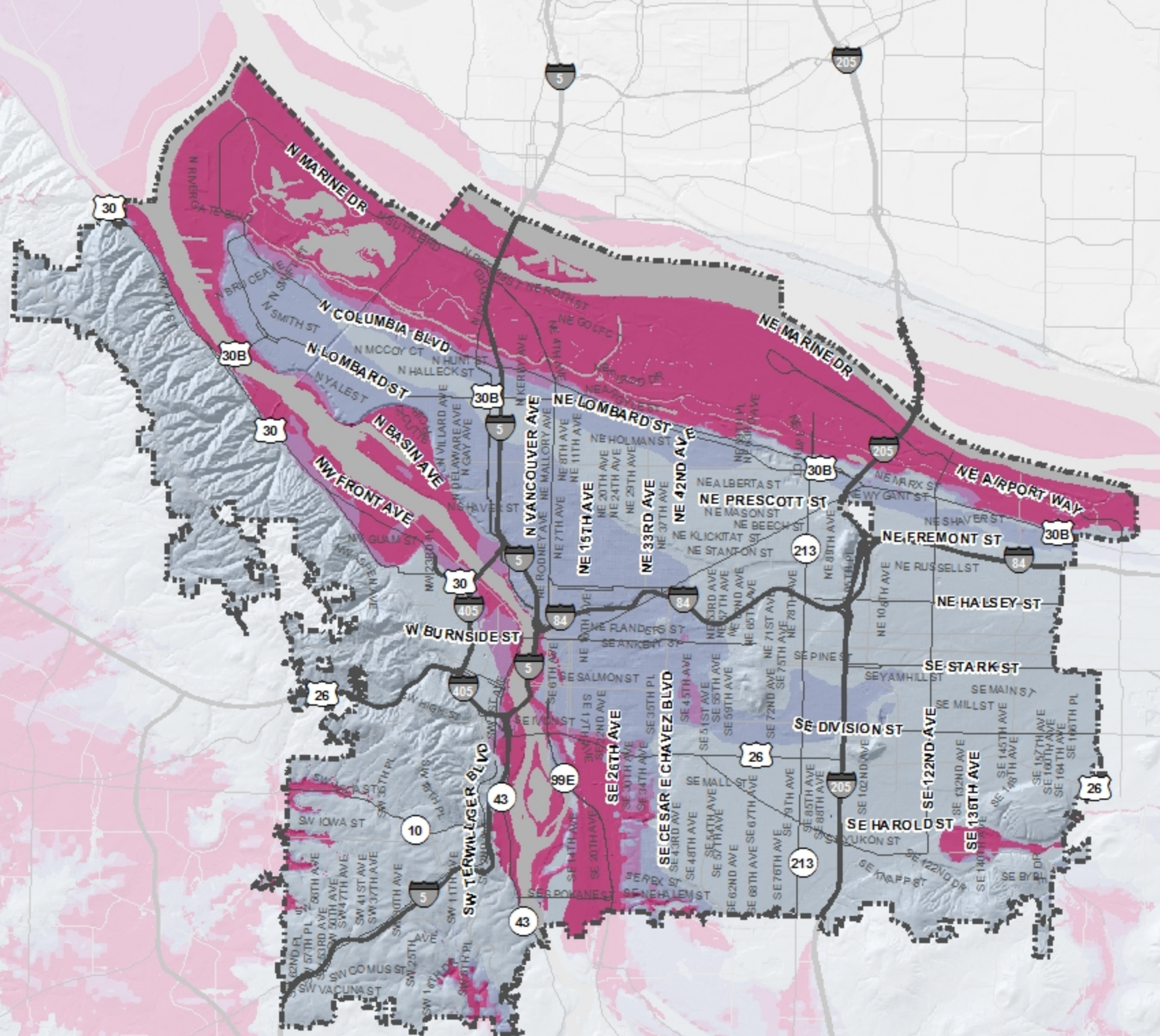


Mitigation Action Plan (MAP)

Liquefaction Susceptibility

Legend

- City Boundary
- Liquefaction Susceptibility Type**
- 0 -- None
- 1 -- Very Low
- 2 -- Low
- 3 -- Moderate
- 4 -- High
- 5 -- Very High



0 0.75 1.5 Miles

Sources: DOGAMI-2013; City of Portland-2018

