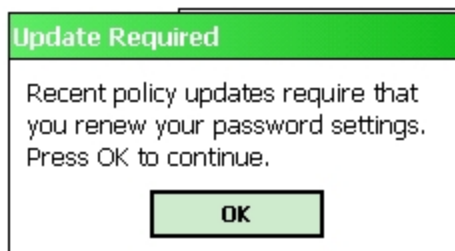


Four Digit Personal Identification Number (PIN) Setup for Windows Mobile Devices

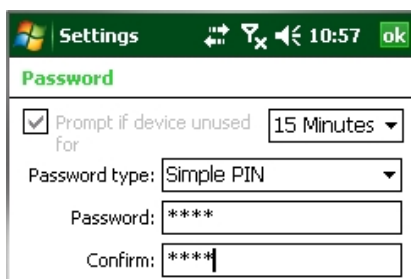
The following applies to all Phones that are part of City Wireless Sync (CWS) using Exchange Active Sync (EAS) and Windows Mobile phones.

Once you have received the policy please follow the following steps

1. Select OK to accept the EAS mailbox Policy Mailbox that will enforce passwords.



2. The Password Policy will enforce the following
 - Prompt if device unused for **15MIN**
 - Password type set to **Simple PIN**
3. Enter & Confirm your device PIN (4 numeric digit minimum)



4. You will now be prompted to authenticate to your device with your numeric password to access your device. Enter your password and select Unlock



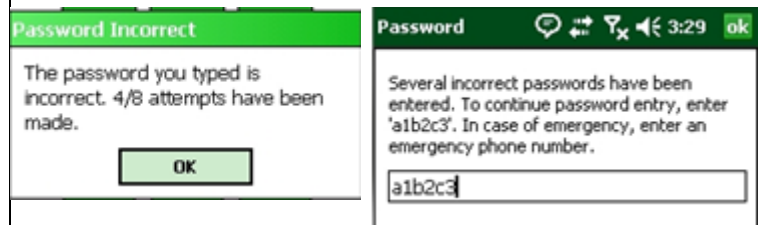
Entering your PIN

The Password PIN can be entered via the touchpad or phone keyboard.

CAUTION: Entering the wrong password 10 consecutive times will result in the Wipe of all data on the device.

Warning before device is wiped.

Windows mobile will count the failed attempts to authenticate and provide a warning half way though the allowed number of failed attempts. Windows Mobile will prompt the user to enter the characters "a1b2c3" in order to proceed.



Windows mobile will offer a final warning before you have reached your last attempt.

