



CJ20N - Set Project User Status

Purpose

Use this procedure to set the project User Status to "Project Completed."

Trigger

Perform this procedure when a project is ready for capitalization to Final Depreciating Assets (FDAs).

Prerequisites

- Settlement rules are set for the AUCs to be capitalized to FDAs using CJ20N
- Project is set to Technically Complete (TECO) using CJ20N

Menu Path

Use the following menu path to begin this transaction:

N/A

Transaction Code

CJ20N

Helpful Hints

- R/O/C column in field entry represents Required, Optional, or Conditional entry.
- Use CJ20N to set System Status; e.g., REL (released), TECO (technically complete), CLSD (Closed) and User Status; e.g., CSET (Project settled to FDA's).
- User Status are used for many purposes. Explore each status to identify which are most useful for certain stages of the capital projects.
- Step list for settling AUCs to FDAs:
 - **Project Manager:** Set User status to CMPL (CJ20N).
 - **Project Manager and Bureau Project Accountant:** Analyze AUCs using the Project Cost Report (S_ALR_87013533).
 - **Fixed Asset Accountant:** Create assets (AS01) and/or subassets (AS11) in FI-AA for FDAs.
 - **Bureau Project Accountant:** Create settlement rules and set Project status to TECO (CJ20N).
 - **Bureau Project Accountant:** Perform settlement of AUCs to FDAs (CJ88).
 - **Project Manager or Bureau Project Accountant:** Deselect CMPL, then set User status to CSET (CJ20N).

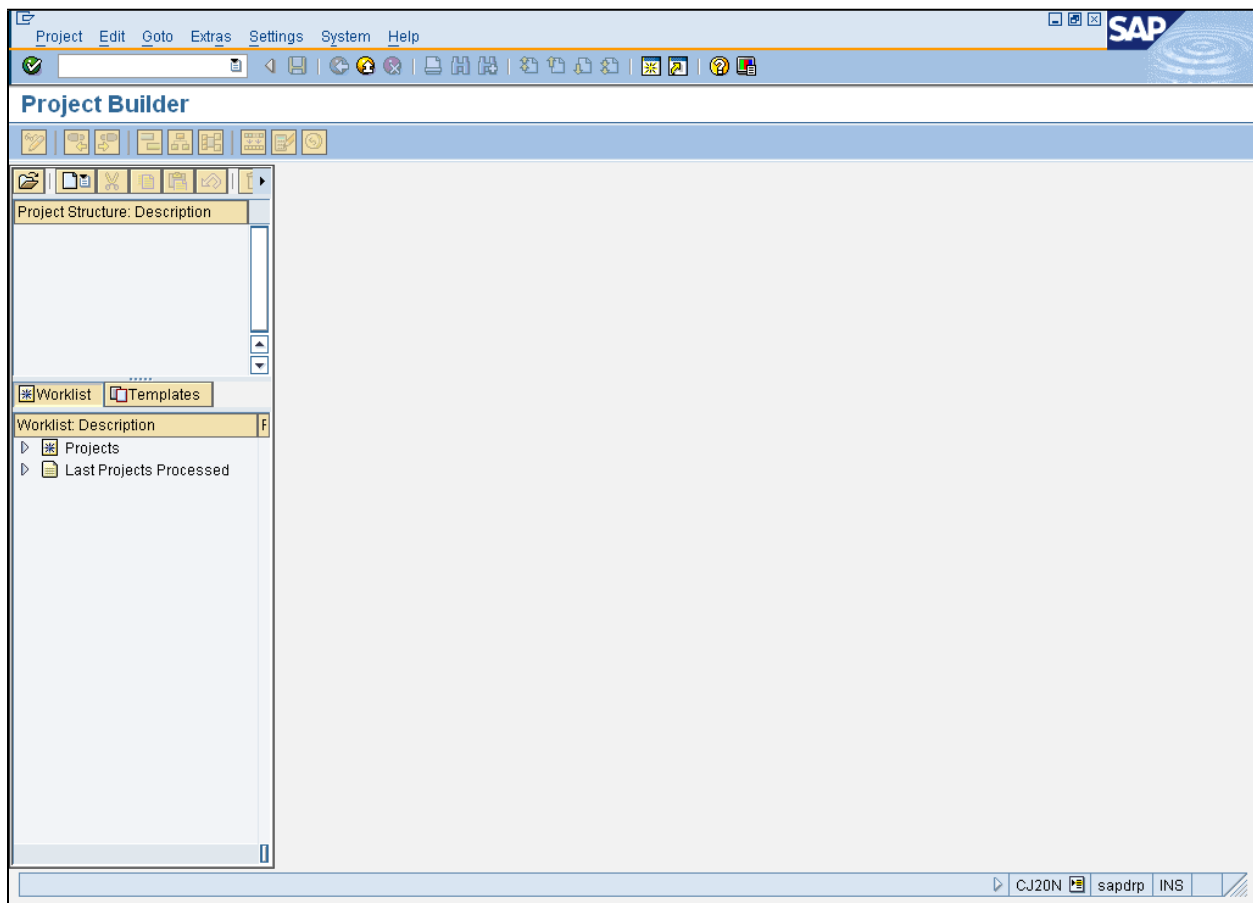


CJ20N - Set Project User Status

Procedure

1. Start the transaction using the menu path or transaction code. The *Project Builder* screen displays.

Project Builder



2. Click **Open** . The *Open Project* dialog box displays.



CJ20N - Set Project User Status

Open Project

3. As required, complete/review the following fields:

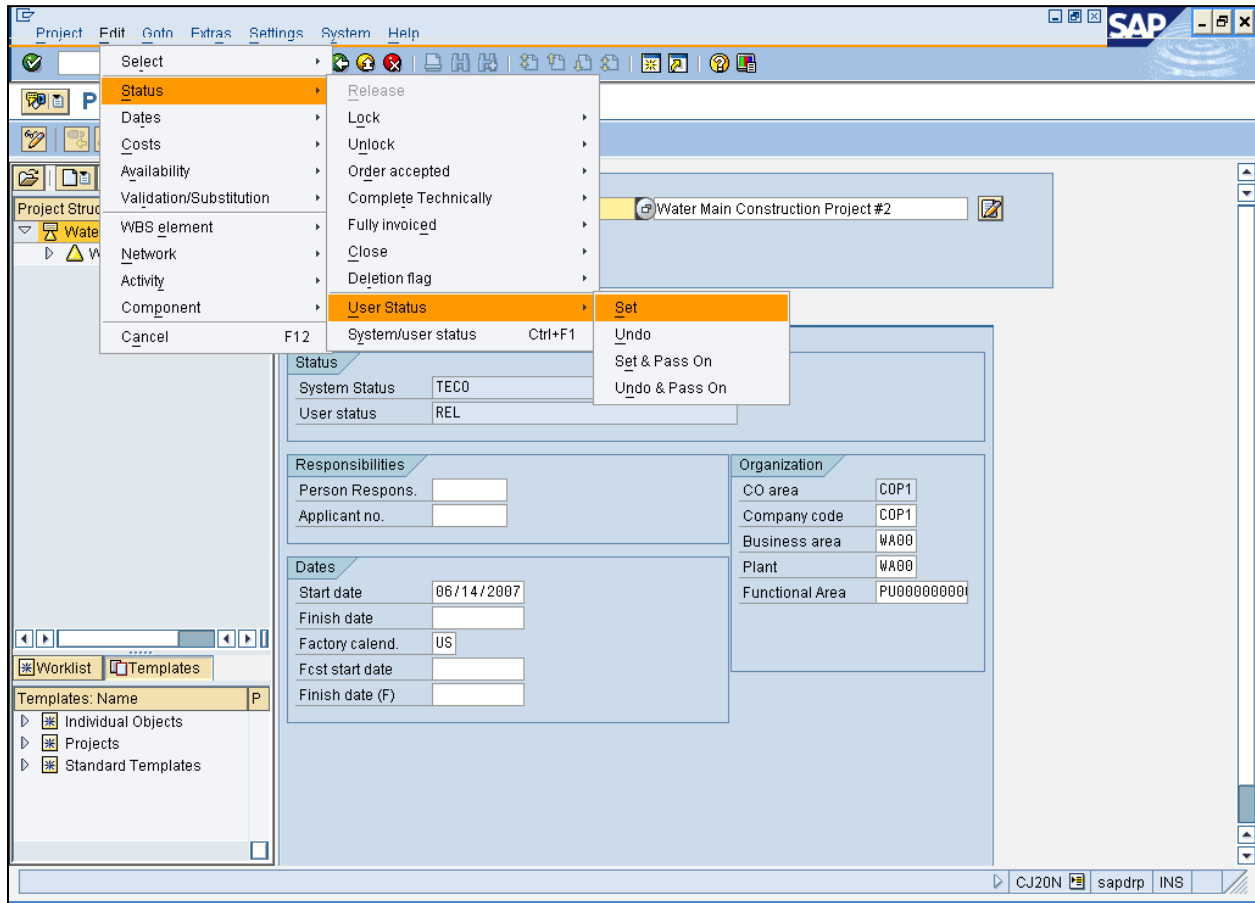
Field	R/O/C	Description
Project Definition	R	Framework of data that is binding to the entire project. Example: WM0002

4. Click **Open** . The Project *Builder: Project XXXX* screen displays.



CJ20N - Set Project User Status

Project Builder: Project WM0002




5. Click **Edit** → **Status** → **User Status** → **Set** menu item **Set**.



CJ20N - Set Project User Status

User Status (XXXX) YYYY Entries found

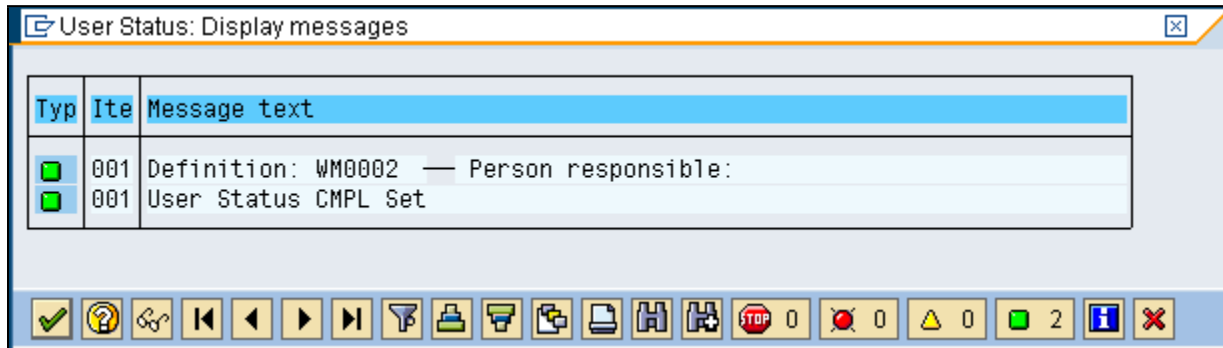
StNo	Stat	Status
	CFIN	Completed – Final
	CMPL	Project Completed
	CNCL	Cancelled
	COCS	Certificate of Completion Sent
	CON	Construction
	COSB	Completed – Outstanding bills
	COSL	Completed – Outstand. lawsuit
	COUT	Close out
	CPLS	Completed – Punch list/retange
	DEPE	Deposit Expected
	DEPR	Deposit Received
	DES	Design
	DONE	Donation Expected
	DONR	Donation Documentation Receive
	FINS	Final Inspection
	LCMP	Punch List Completed
	LCRT	Punch List Created
	NSTR	Not started
	PCNF	Planning Conference
	PLN	Planning
	PMTI	Pernit Issused
	T&M	Time & Manner
	WREL	Work Order Relevant

6. Select **CMPL** row item **CMPL** Project Completed .
7. Click **Copy**  . The *User Status: Display messages* box displays.



CJ20N - Set Project User Status

User Status: Display messages

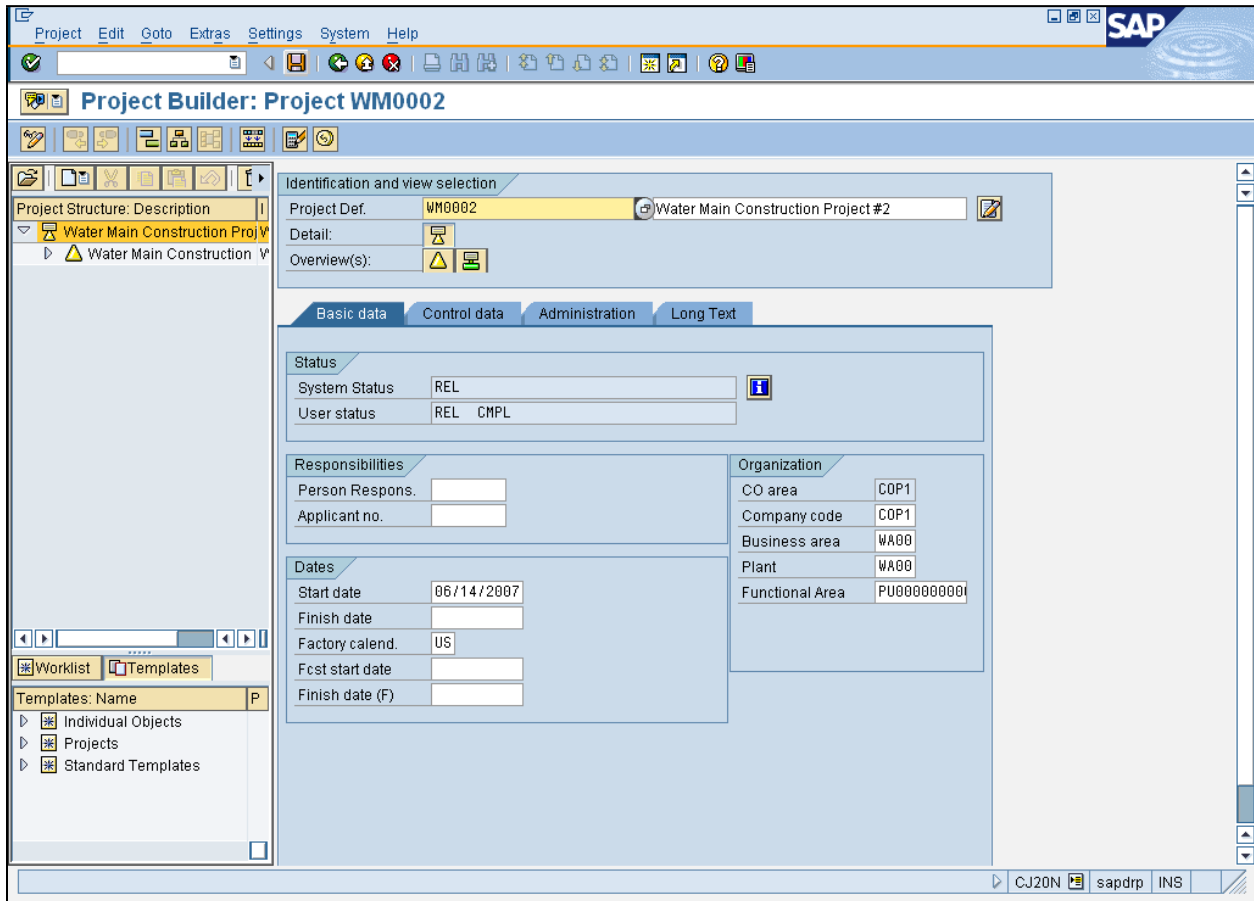


8. Click **Continue** . The *Project Builder: Project XXXX* screen updates to display "REL CMPL" in the *User status* field.




CJ20N - Set Project User Status

Project Builder: Project WM0002



9. Click **Save**  .

 The system displays the message, "*Project XXXX is being changed.*"

10. Click **Exit**  .



CJ20N

Work Instruction

CJ20N - Set Project User Status

Result

You have set the project user status to Project Completed (CMPL).