



# FM\_SETS\_FUNCTION1

Work Instruction

## FM\_SETS\_FUNCTION1 Create Functional Area Group

### Purpose

Use this procedure to create a functional area group for reporting.

### Trigger

Perform this procedure when operations change and/or functional areas must be regrouped to properly report financial information.

### Prerequisites

- Functional Areas to be grouped must exist.
- Know the Functional Area number(s).

### Menu Path

Use the following menu path to begin this transaction:

N/A

### Transaction Code

FM\_SETS\_FUNCTION1

### Helpful Hints

- R/O/C column in tables represents Required, Optional, or Conditional entry.
- The number ranges for Functional Areas are intelligent. Each pair of characters represents a level on the functional area hierarchy.



### FM\_SETS\_FUNCTION1 Create Functional Area Group

#### Procedure

1. Start the transaction using the menu path or transaction code. The *Create Functional Area Group: Initial Screen* displays.

#### Create Functional Area Group: Initial Screen

The screenshot shows the SAP 'Create Functional Area Group: Initial Screen' interface. At the top, there is a menu bar with 'Group', 'Edit', 'Goto', 'Extras', 'Environment', 'System', and 'Help'. Below the menu is a toolbar with various icons. The main area contains a 'Functional Area Group' field with a yellow background and a small icon to its right. Below this is a 'Reference' section with a 'Functional Area Group' label and an empty input field. The bottom status bar shows 'FM\_SETS\_FUNCTION1', 'sapdrp', and 'INS'.

2. As required, complete/review the following fields:

Field	R/O/C	Description
Functional Area Group Name	R	The name of the Functional Area Group. <b>Example:</b> ALL

3. Click **Enter** . The *Create Functional Area Group: Structure* screen displays.

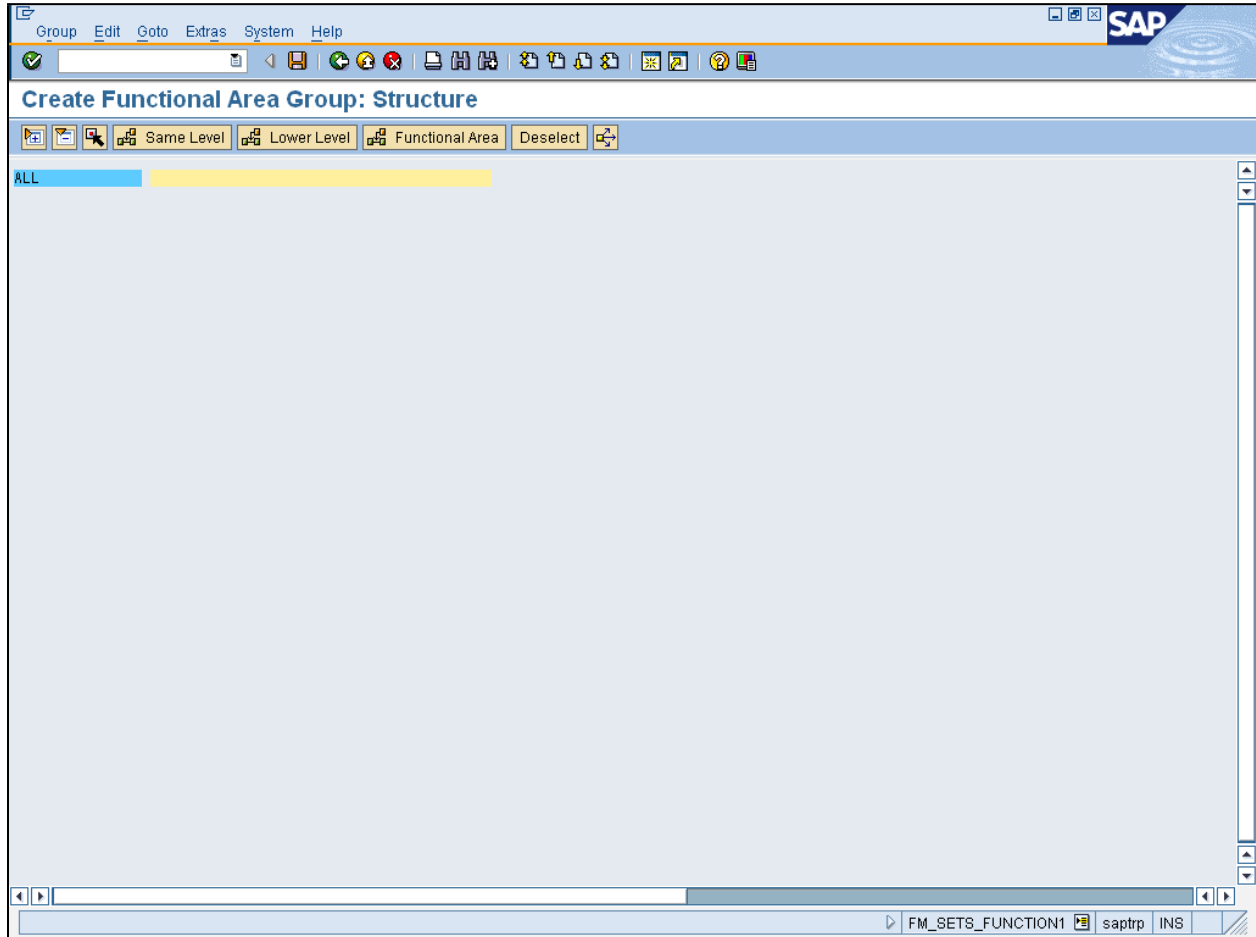


# FM\_SETS\_FUNCTION1

Work Instruction

## FM\_SETS\_FUNCTION1 Create Functional Area Group

### Create Functional Area Group: Structure

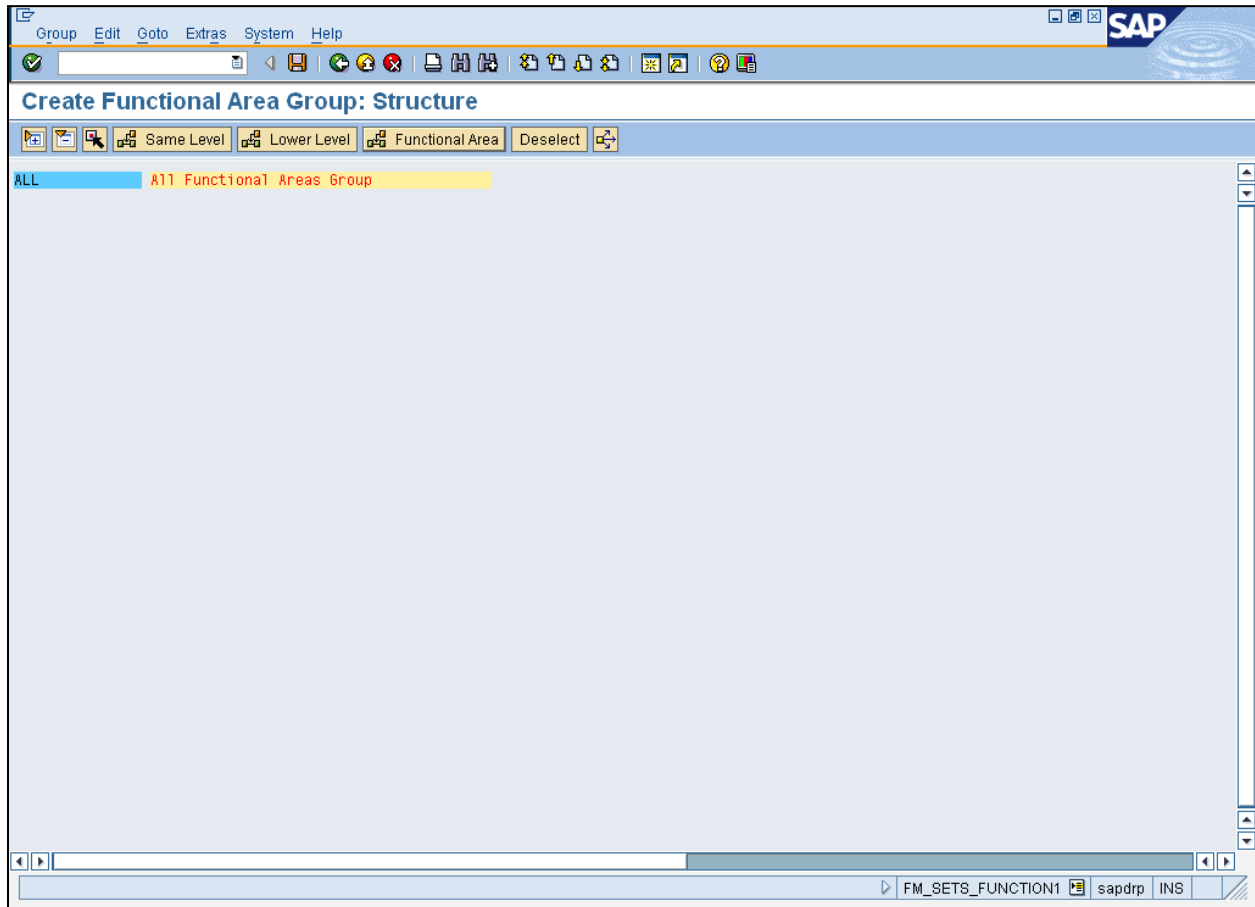


4. Click **Description** field  .



## FM\_SETS\_FUNCTION1 Create Functional Area Group

### Create Functional Area Group: Structure



5. As required, complete/review the following fields:

Field	R/O/C	Description
Description	R	Free text field used to provide additional information or a description. <b>Example:</b> All Functional Areas Group

6. Click **Insert Functional Area**  **Functional Area** to open the hierarchy structure for this group.



# FM\_SETS\_FUNCTION1

Work Instruction

## FM\_SETS\_FUNCTION1 Create Functional Area Group

### Create Functional Area Group: Structure

The screenshot shows the SAP 'Create Functional Area Group: Structure' dialog. The main area displays a tree structure with 'ALL' selected and 'All Functional Areas Group' highlighted in red. Below this, there are several rows of input fields for defining the structure. The status bar at the bottom shows 'FM\_SETS\_FUNCTION1', 'saptrp', and 'INS'.

7. Click **From value** field  .

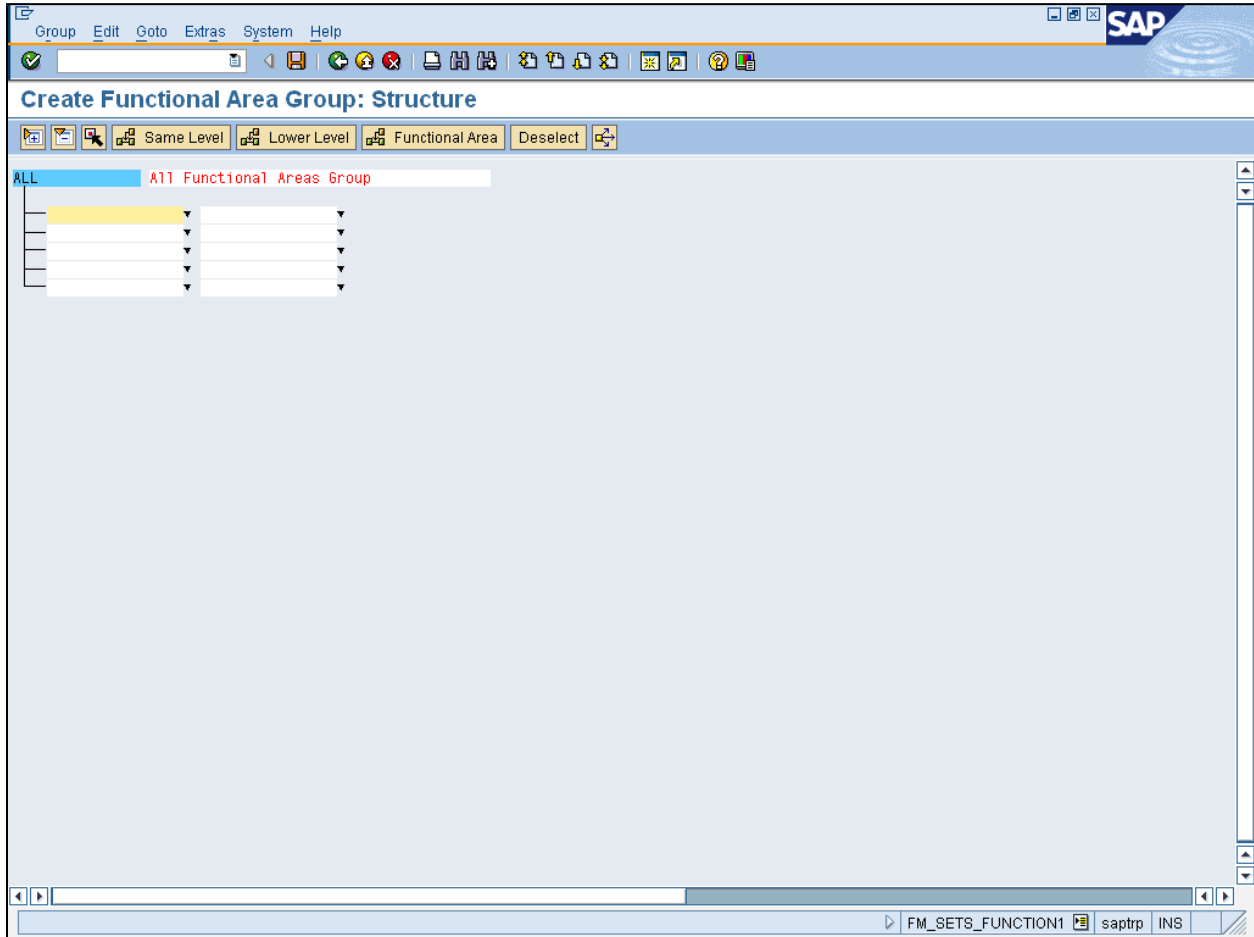


To enter a range use the **From/To value** fields (left/right columns). To enter individual areas (no range) use only the **From value** field (left column).



## FM\_SETS\_FUNCTION1 Create Functional Area Group

### Create Functional Area Group: Structure



8. As required, complete/review the following fields:

Field	R/O/C	Description
From	R	Beginning value to be entered when specifying a range. <b>Example:</b> a000000000000000

9. Click **To value** field

10. As required, complete/review the following fields:

Field	R/O/C	Description
-------	-------	-------------



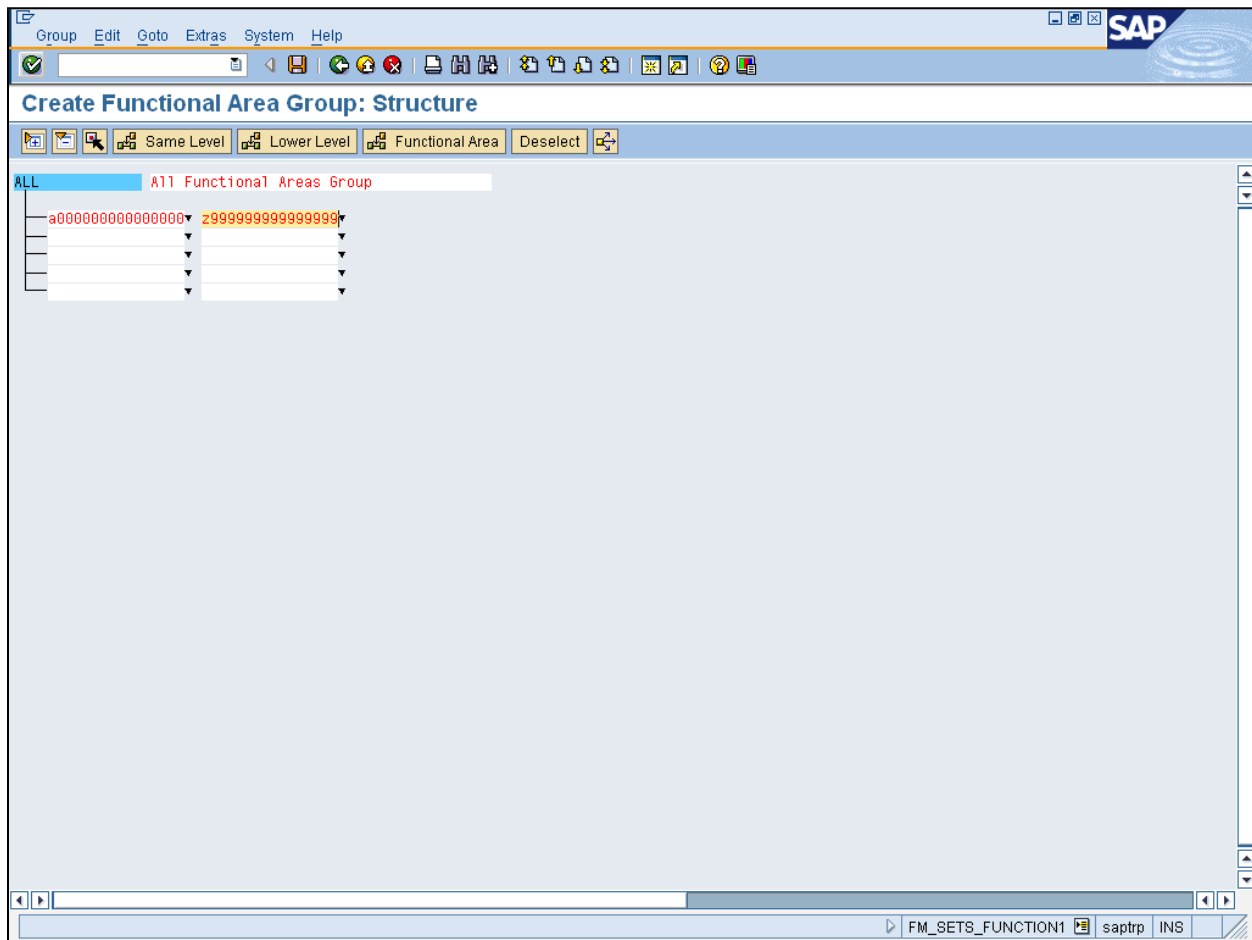
# FM\_SETS\_FUNCTION1

Work Instruction

## FM\_SETS\_FUNCTION1 Create Functional Area Group

Field	R/O/C	Description
to	O	Upper limit of the range of time covered in the report. <b>Example:</b> z9999999999999999

### Create Functional Area Group: Structure

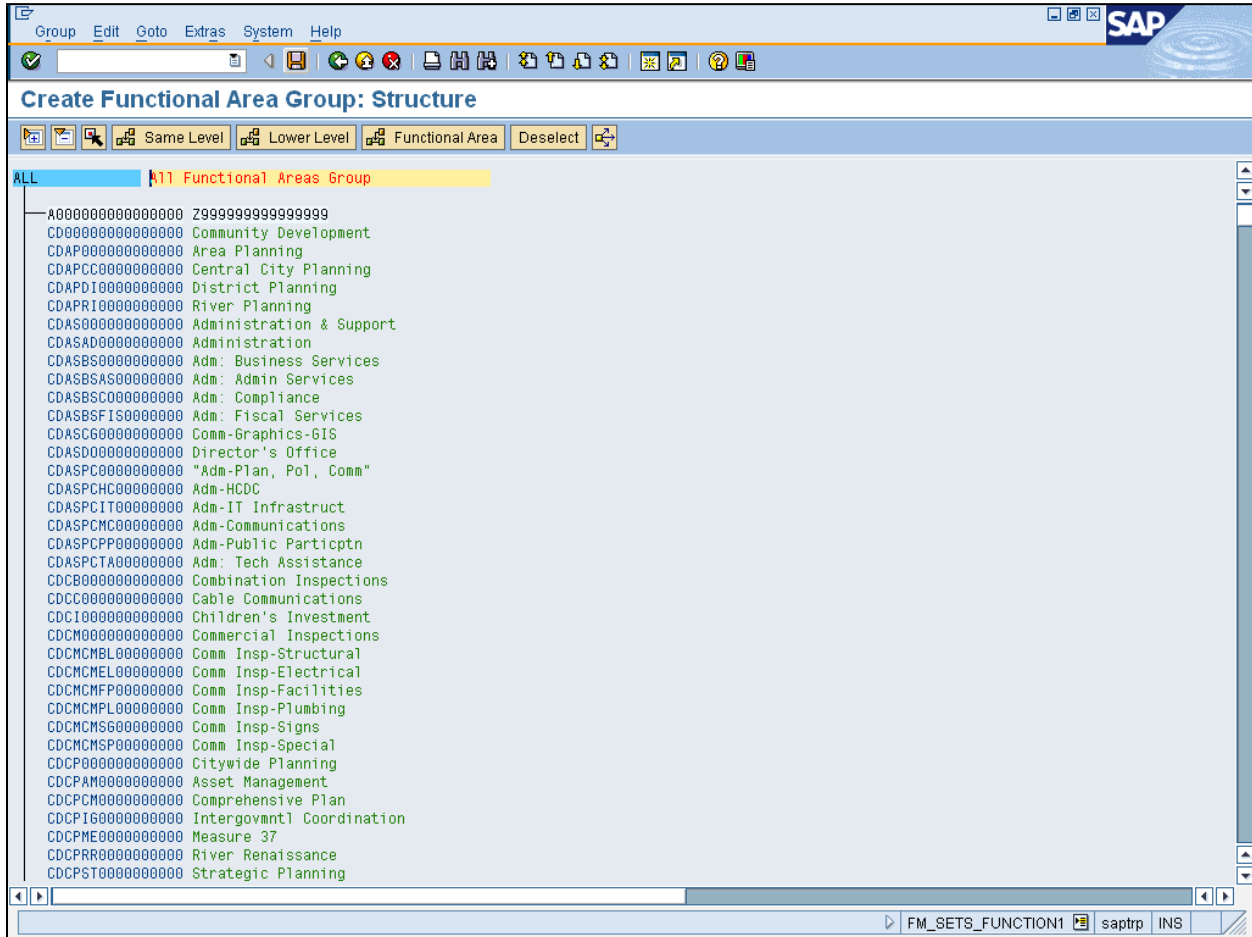


11. Click **Confirm Changes**  . The *Functional Area* titles display.



## FM\_SETS\_FUNCTION1 Create Functional Area Group

### Create Functional Area Group: Structure



12. Click **Save (Ctrl+S)**  .



The system displays the message, "*The changes have been saved*".

13. Click **Exit (Shift+F3)**  to return to *Create Functional Area Group: Initial Screen*.

14. Click **Exit (Shift+F3)**  .





## FM\_SETS\_FUNCTION1

Work Instruction

### FM\_SETS\_FUNCTION1 Create Functional Area Group

#### Result

You have created a Functional Area Group.