



ZFICP01 Mass JV Upload

Purpose

Use this procedure to enter a journal entry using a Tab delimited file or Excel spreadsheet.

Trigger

Perform this procedure when need to enter a journal entry with several lines of input.

Prerequisites

- The upload file must be in Excel or Tab delimited format.
- Only Central Accounting is authorized to post directly.

Menu Path

Use the following menu path to begin this transaction:

N/A

Transaction Code

ZFICP01

Helpful Hints

- R/O/C column in tables represents Required, Optional, or Conditional entry.
- Always run this transaction in test mode until there are no errors.
- Documents can be parked or posted using this transaction.
- To view parked documents use transaction FBV3.
- In this example the document is parked and then viewed with transaction FB03, which displays parked and posted documents.



ZFICP01 Mass JV Upload

Procedure

1. Start the transaction using the menu path or transaction code. The *Mass JV Upload* screen displays.

Mass JV Upload

Use input data from:

Input Format: Tab delimited Excel

Presentation Server:

Application Server:

BDC File location: /usr/sap/tmp/bdc.bt

Test Mode:

Input parameters:

Company Code	COP1
Document Date	08/29/2008
Posting Date	08/29/2008
Posting Period	1
Document Type	SA
Reference	
Document Header Text	
Session Name	JV_UPLOAD

Transaction type:

Post Document(FB01)

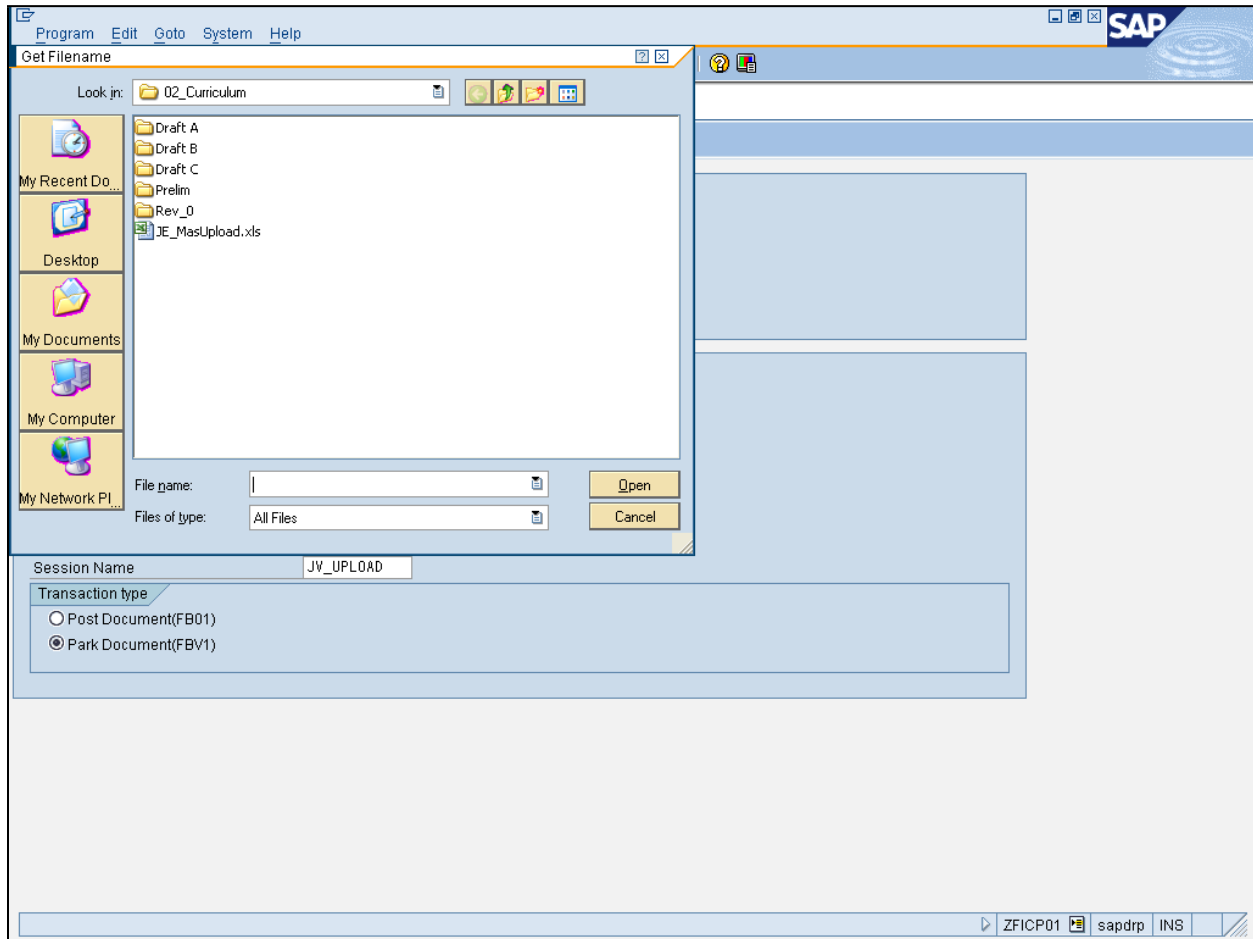
Park Document(FBV1)

2. Deselect the **Test Mode** check box .
3. Click the **Presentation Server** matchcode to attach the Excel file.



ZFICP01 Mass JV Upload

Get Filename



4. Double-click **JE_MasUpload.xls**  JE_MasUpload.xls .



ZFICP01 Mass JV Upload

Mass JV Upload

The screenshot shows the SAP 'Mass JV Upload' dialog box. It is titled 'Mass JV Upload' and has a menu bar with 'Program', 'Edit', 'Goto', 'System', and 'Help'. The SAP logo is in the top right corner. Below the title bar, there are three icons: a clock, a refresh icon, and an information icon. The main area is divided into two sections: 'Use input data from:' and 'Input parameters:'.
 In the 'Use input data from:' section:
 - 'Input Format' has radio buttons for 'Tab delimited' and 'Excel' (selected).
 - 'Presentation Server' has a dropdown menu showing 'Z:\02_EBSP\07_End-User_Training_Team\02_FIL\003_G'.
 - 'Application Server' has an empty dropdown menu.
 - 'BDC File location' has a text field containing '/usr/sap/tmp/bdc.bt'.
 - 'Test Mode' has an unchecked checkbox.
 In the 'Input parameters:' section:
 - 'Company Code' is 'COP1'.
 - 'Document Date' is '08/29/2008'.
 - 'Posting Date' is '08/29/2008'.
 - 'Posting Period' is '1'.
 - 'Document Type' is 'SA'.
 - 'Reference' is an empty text field.
 - 'Document Header Text' is an empty text field.
 - 'Session Name' is 'JV_UPLOAD'.
 Below this is the 'Transaction type' section with radio buttons for 'Post Document(FB01)' and 'Park Document(FBV1)' (selected).
 At the bottom right of the dialog, there is a status bar showing 'ZFICP01', 'sapdpr', and 'INS'.


5. As required, complete/review the following fields:


Field	R/O/C	Description
Document Type	R	Key that identifies to which group of documents this document will be assigned. Documents of the same type contain common information which is relevant to posting and update of the value fields in the data base. Example: CR

6. Click the **Execute** button  .

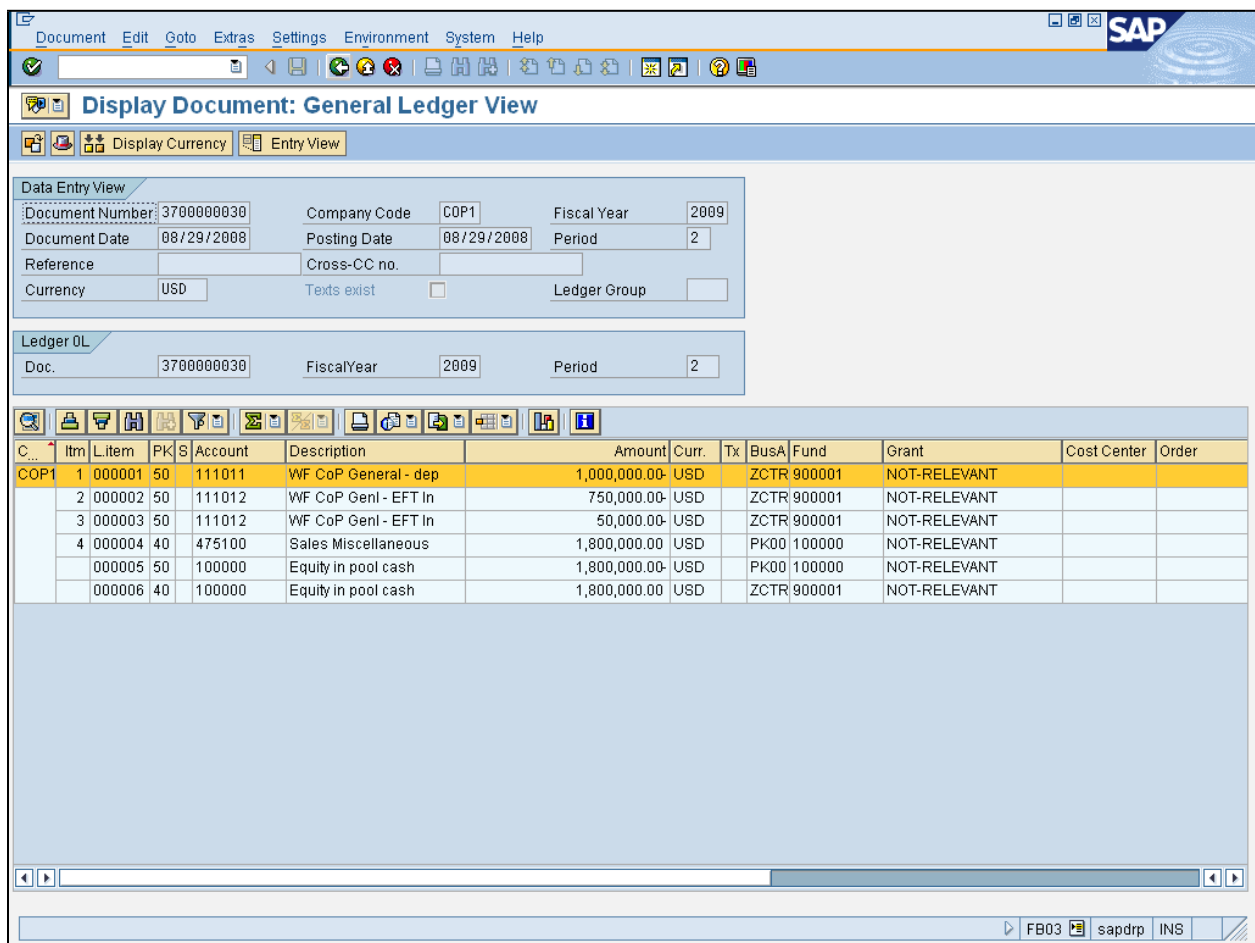


ZFICP01 Mass JV Upload

- 7. Click the **Exit** button  and go to transaction FB03 to display the document line items.

 Note that the documents have been parked successfully.

Display Document: General Ledger View



The screenshot shows the SAP 'Display Document: General Ledger View' window. The 'Data Entry View' section contains the following fields:

- Document Number: 3700000030
- Company Code: COP1
- Fiscal Year: 2009
- Document Date: 08/29/2008
- Posting Date: 08/29/2008
- Period: 2
- Reference: (empty)
- Cross-CC no.: (empty)
- Currency: USD
- Texts exist:
- Ledger Group: (empty)

The 'Ledger OL' section shows:

- Doc.: 3700000030
- Fiscal Year: 2009
- Period: 2

The main table displays document line items with the following data:

C...	Item	L.item	PK	S	Account	Description	Amount	Curr.	Tx	BusA	Fund	Grant	Cost Center	Order
COP1	1	000001	50		111011	WF CoP General - dep	1,000,000.00	USD		ZCTR	900001	NOT-RELEVANT		
	2	000002	50		111012	WF CoP Genl - EFT In	750,000.00	USD		ZCTR	900001	NOT-RELEVANT		
	3	000003	50		111012	WF CoP Genl - EFT In	50,000.00	USD		ZCTR	900001	NOT-RELEVANT		
	4	000004	40		475100	Sales Miscellaneous	1,800,000.00	USD		PK00	100000	NOT-RELEVANT		
		000005	50		100000	Equity in pool cash	1,800,000.00	USD		PK00	100000	NOT-RELEVANT		
		000006	40		100000	Equity in pool cash	1,800,000.00	USD		ZCTR	900001	NOT-RELEVANT		

The status bar at the bottom right shows transaction FB03, user sapdrp, and system INS.

- 8. Click the **Exit** button .



ZFICP01

Work Instruction

ZFICP01 Mass JV Upload

Result

You have processed a mass JV upload.