

Logging in to the SAP Desktop GUI

1

Logging in to the Desktop GUI



01

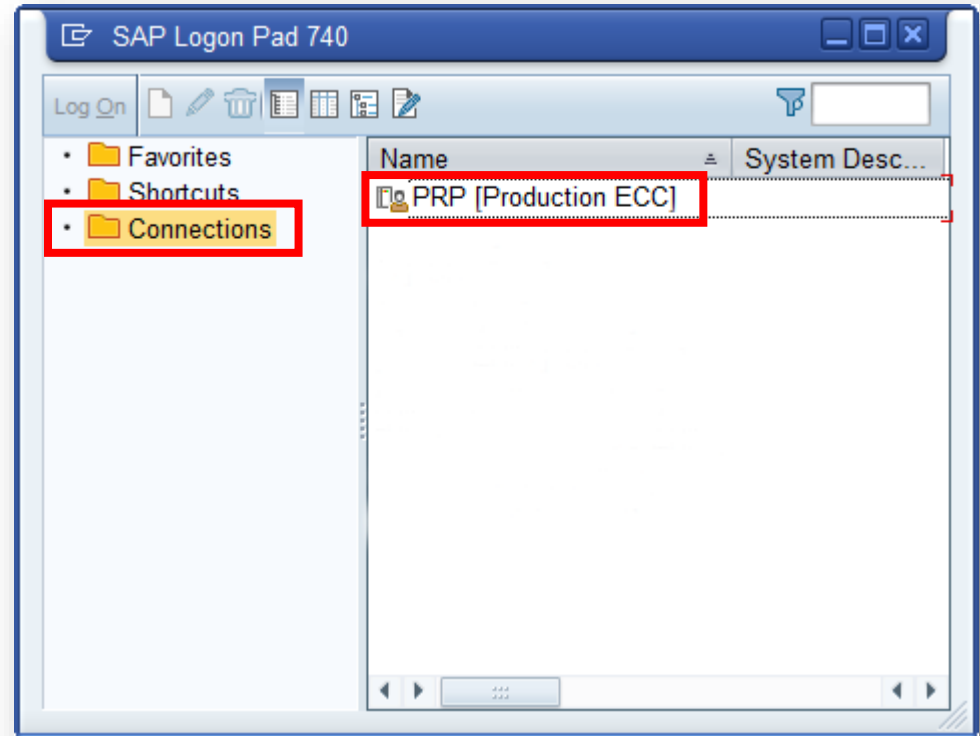
Locate the SAP Logon Pad icon on your Desktop. Double-click it.

GUI = Graphical User Interface. Here it references the SAP application used on the desktop.

02

When the logon pad appears, make sure **Connections** is selected.

Then double-click **PRP [Production ECC]** to login to the City's real-time SAP "production" system.



Note: If you are missing your SAP Logon Pad icon or if there is not a PRP client listed in your Connections, contact the Help Desk at 3-5199 for help.

Logging in to the Desktop GUI

The screenshot shows the SAP Desktop GUI login window. The menu bar includes 'User', 'System', and 'Help'. The toolbar contains various icons, with a green circle containing a checkmark highlighted by a red box. The main area is titled 'SAP' and contains the following fields:

- New password
- Client: 100
- User: [input field with a checkmark icon]
- Password: [input field with dots]
- Logon Language: EN

03

Enter your SAP UserID into the **User** field.

Enter your SAP Password into the **Password** field.

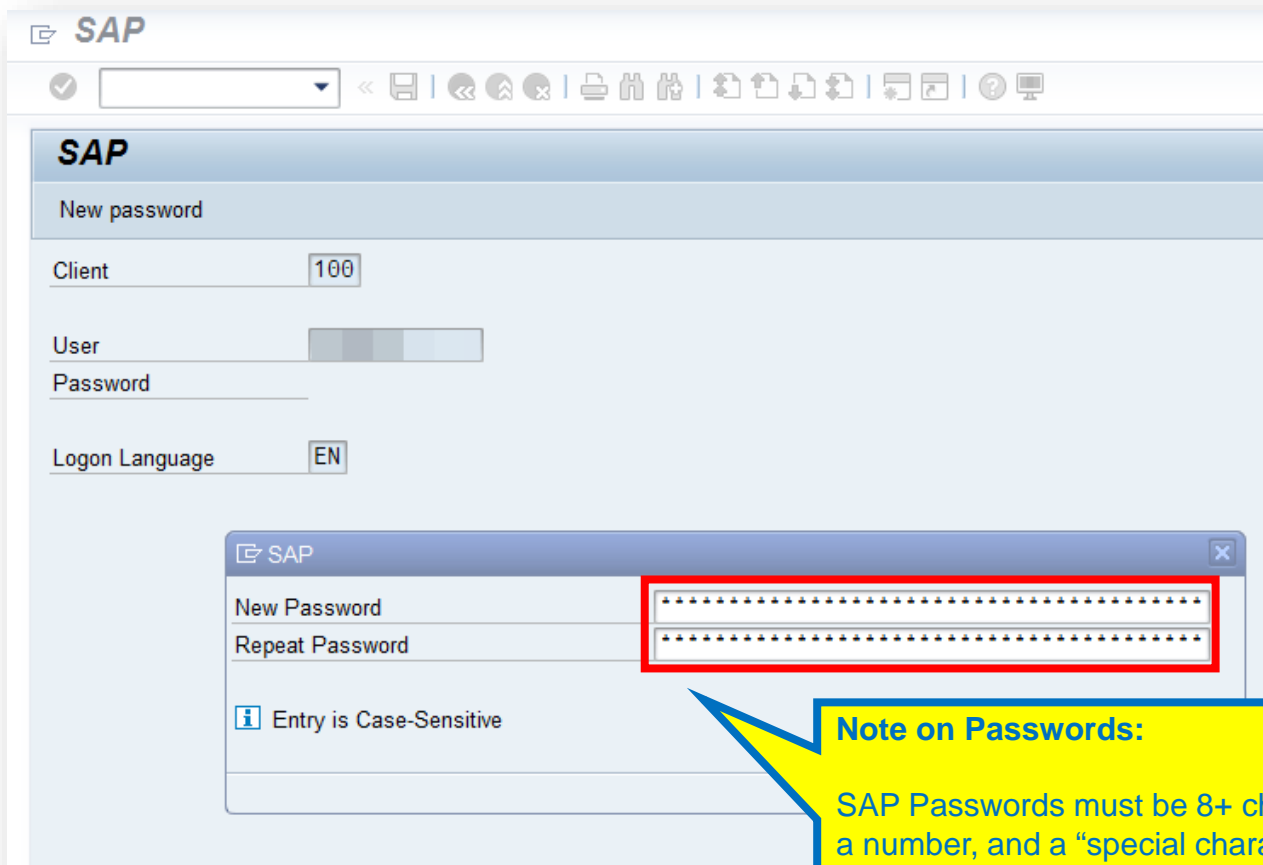
Press **Enter** or click the **SAP Enter Button** (green circle with a checkmark).

New Employees

SAP UserID: This should have been given to you by your hiring manager or bureau HR personnel when you received your e-mail details and network access information. If not, contact the HelpDesk (3-5199) for your User ID.

Password: Call the Help Desk at 3-5199 to obtain a temporary password once you have your SAP User ID.

Logging in to the Desktop GUI



03.A. (New Users only)

If you are logging on for the first time, SAP will require you to create a New Password.

Enter your new **Password** in both fields and click the **Green Check** or hit **Enter**.

You will be logged in to the system and able to use the SAP Desktop GUI.

– END –

Note on Passwords:

SAP Passwords must be 8+ characters long, contain a capital letter, a number, and a "special character". Special characters are the characters above the number keys on your keyboard.

So **tree123** would not be acceptable, but **Treehouse!12** would be.



City of Portland

EBS Training & Development

Author: Charlie Dudley, J.D.

2016