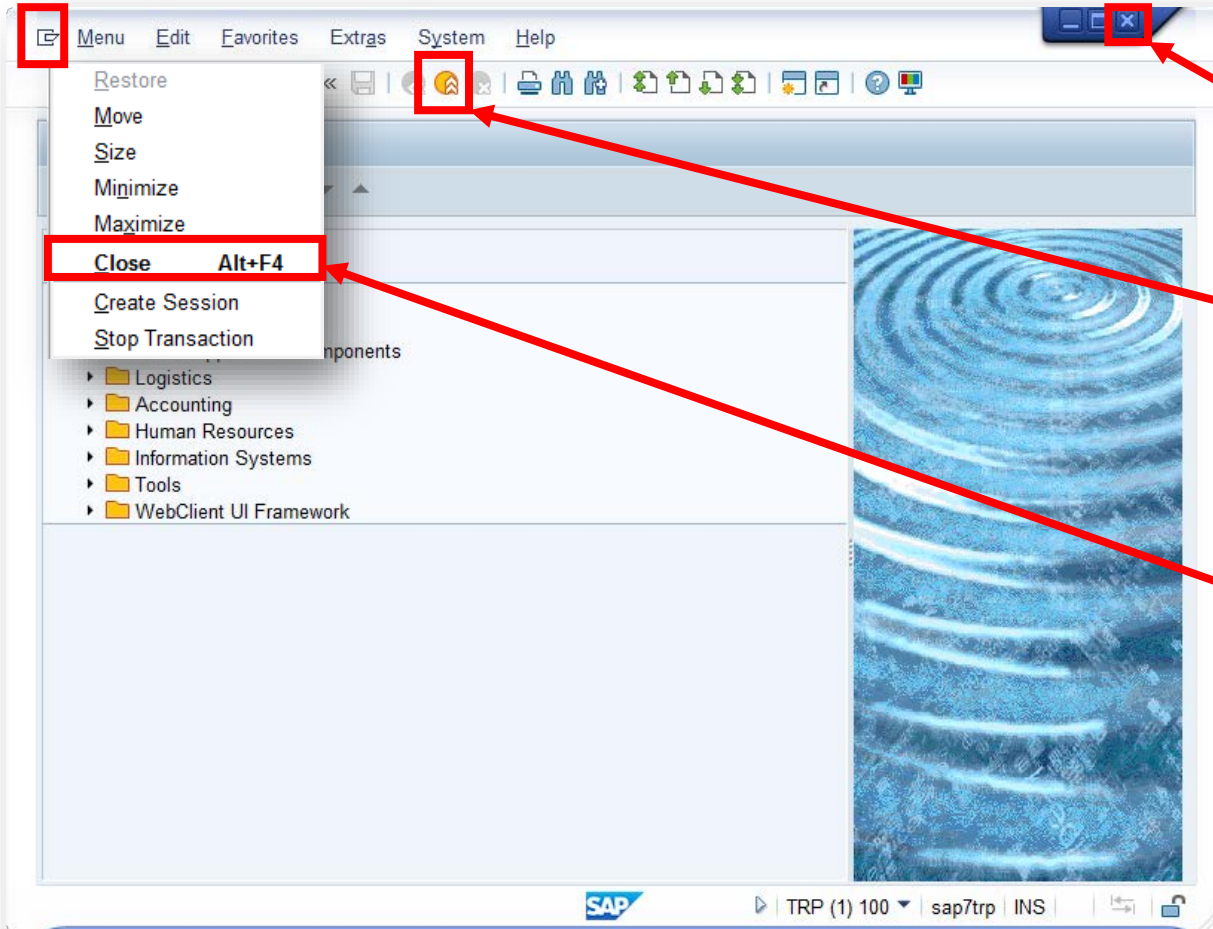


# Logging Out of the SAP Desktop GUI

8

## Logging Out of the SAP Desktop GUI



Exiting SAP is easy and can be done multiple ways.

### 01

Easiest: Just close your active SAP window.

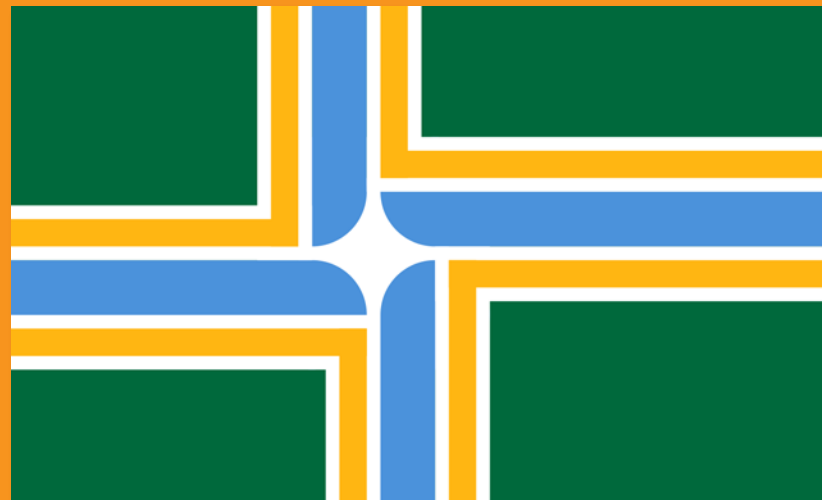
### 02

Use the **Exit button** from the main screen (or if within a t-code keep pushing Exit until you are logged out).

### 03

Click on the **Command button** and then select **Close**.

– END –



# City of Portland

EBS Training & Development

Author: Charlie Dudley, J.D.

2016