



FM_SETS_FIPEX1 Create New Commitment Item Group

Purpose

Use this procedure to create a new commitment item group that rolls up several similar commitment items into one group.

Trigger

Perform this procedure when a new commitment item group is required for posting or allocation.

Prerequisites

- Commitment items must exist (FMCIA - Create Commitment Item).
- The associated G/L accounts and cost elements have a one to one relationship.
- The need for the group has been determined and approved.
- The commitment items, or groups of commitment items, to be included in the new group have been determined.

Menu Path

Use the following menu path to begin this transaction:

N/A

Transaction Code

FM_SETS_FIPEX1

Helpful Hints

- R/O/C column in tables represents Required, Optional, or Conditional entry.
- The associated G/L accounts and cost elements must be created prior to creating a Commitment item group.
- A commitment item group can be made up of individual commitment items or other groups. In this example, a group is created that comprises two previously created sub-groups.



FM_SETS_FIPEX1 Create New Commitment Item Group

Procedure

1. Start the transaction using the transaction code FM_SETS_FIPEX1. The *Create Commitment item group: Initial Screen* displays.

Create Commitment item group: Initial Screen

The screenshot shows the SAP 'Create Commitment item group: Initial Screen'. The main area contains two input fields: 'FM Area' with the value 'COP1' and 'Commitment item group' which is currently empty. Below these fields is a 'Template' section with two rows: 'FM Area' and 'Commitment item group', each with an empty input field. The SAP status bar at the bottom shows the transaction code 'FM_SETS_FIPEX1', user 'sapdrp', and session 'INS'.

2. As required, complete/review the following fields:

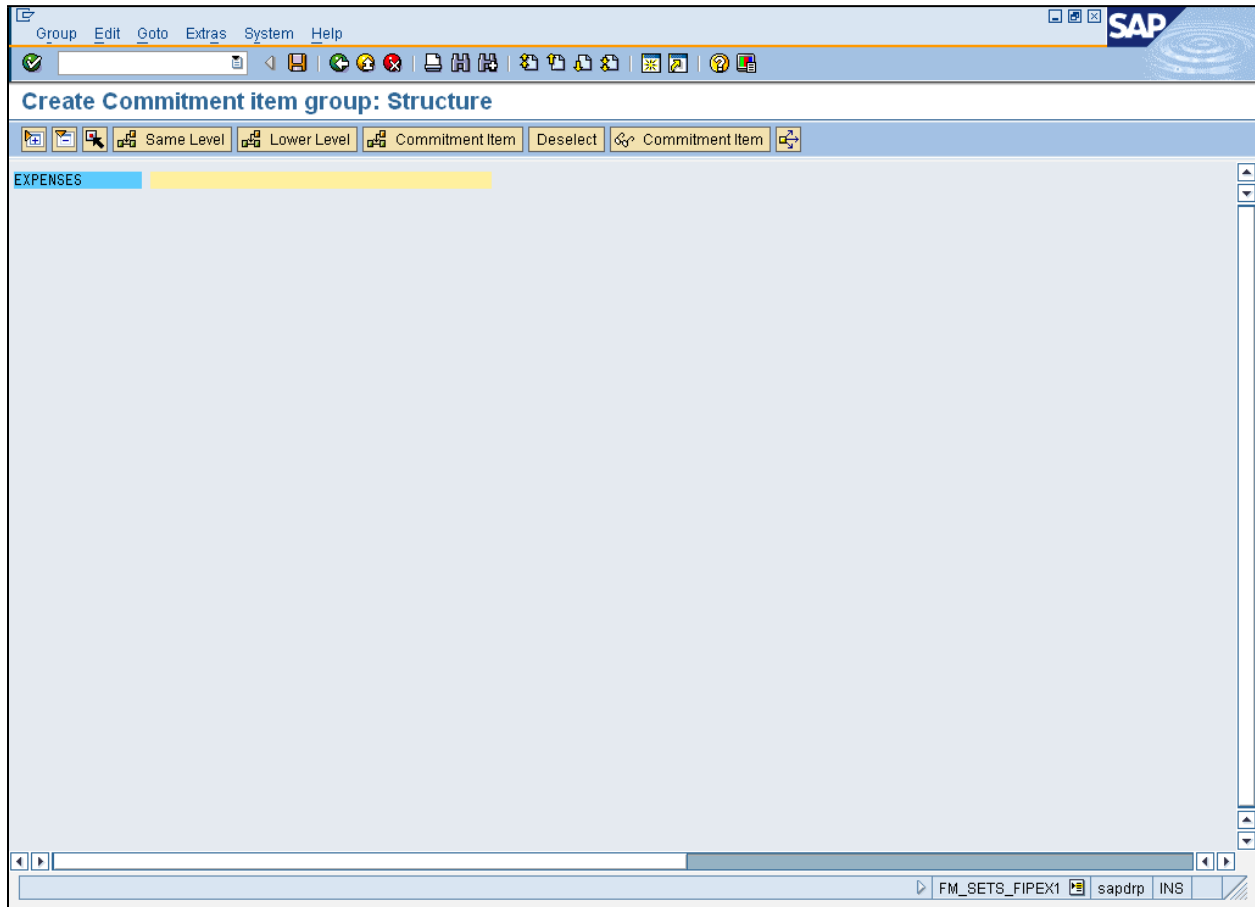
Field	R/O/C	Description
Commitment item group	R	A title or number representing a grouping of commitment items for the purpose of reporting and analysis. Example: expenses

3. Click **Hierarchy (F6)** to create the hierarchy structure for this group.



FM_SETS_FIPEX1 Create New Commitment Item Group

Create Commitment item group: Structure

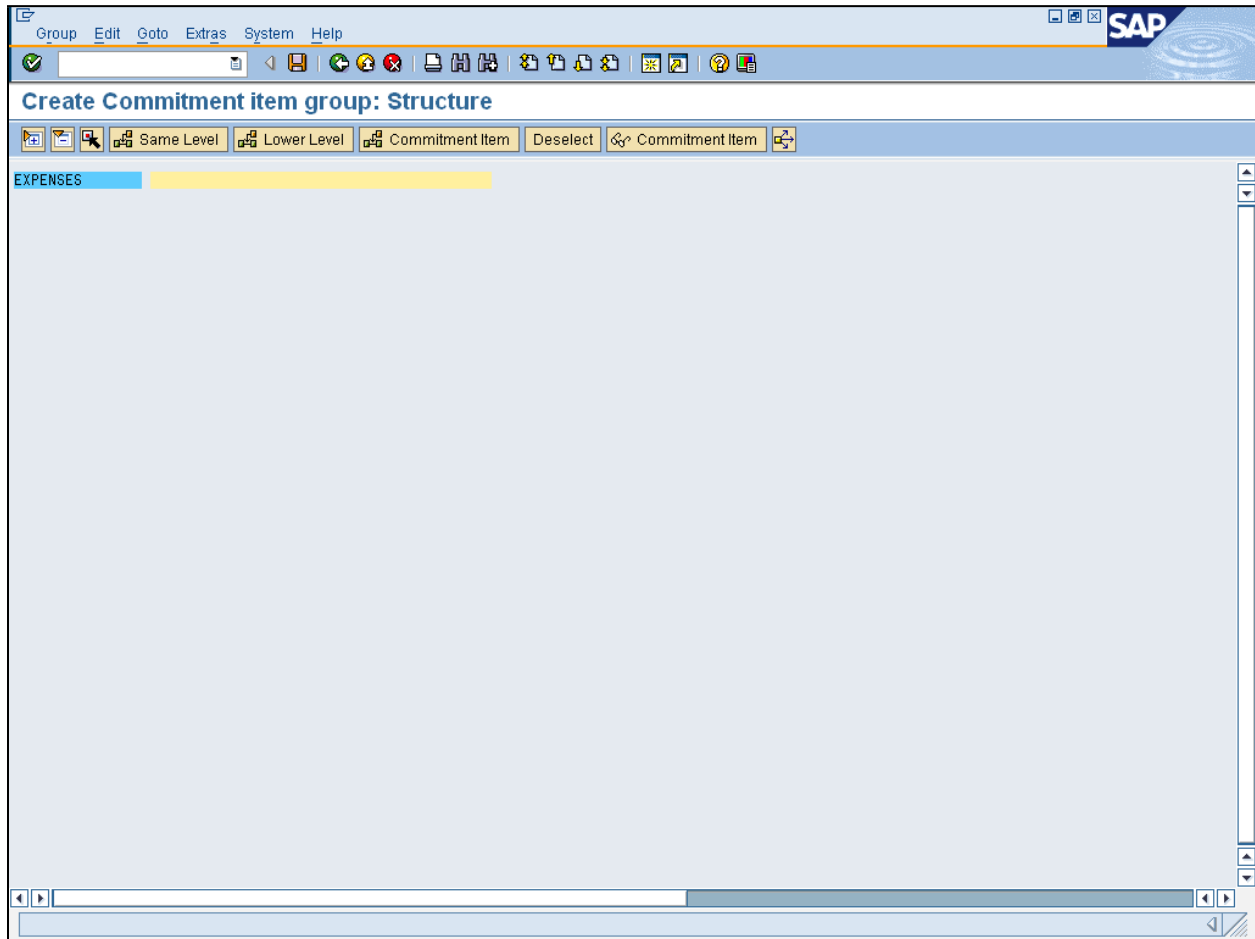


4. Click **Set description** field .



FM_SETS_FIPEX1 Create New Commitment Item Group

Create Commitment item group: Structure



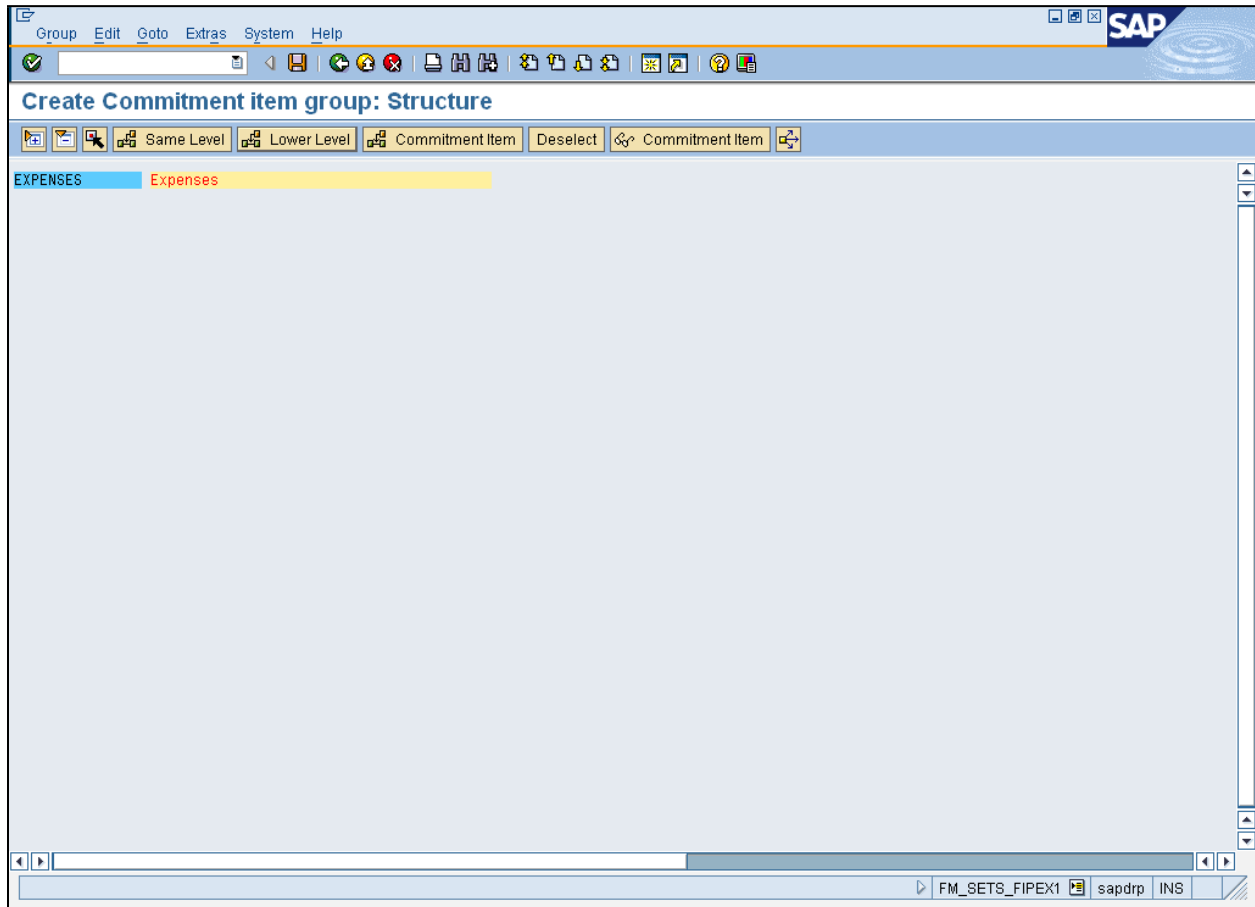
5. As required, complete/review the following fields:


Field	R/O/C	Description
	R	Example: Expenses



FM_SETS_FIPEX1 Create New Commitment Item Group

Create Commitment item group: Structure

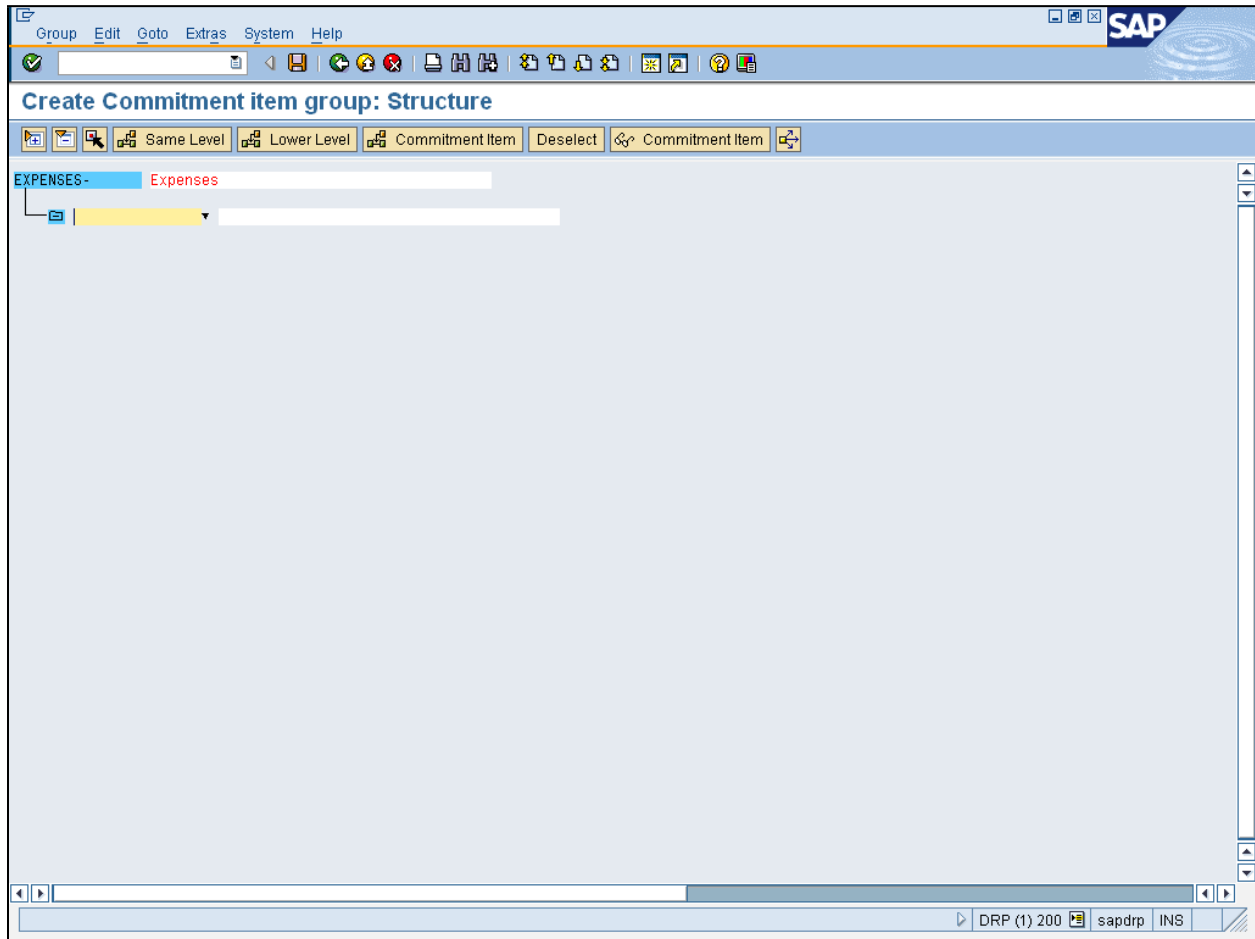


6. Click **Lower Level**  **Lower Level** to open a subgroup field and insert a Commitment Item group.



FM_SETS_FIPEX1 Create New Commitment Item Group

Create Commitment item group: Structure



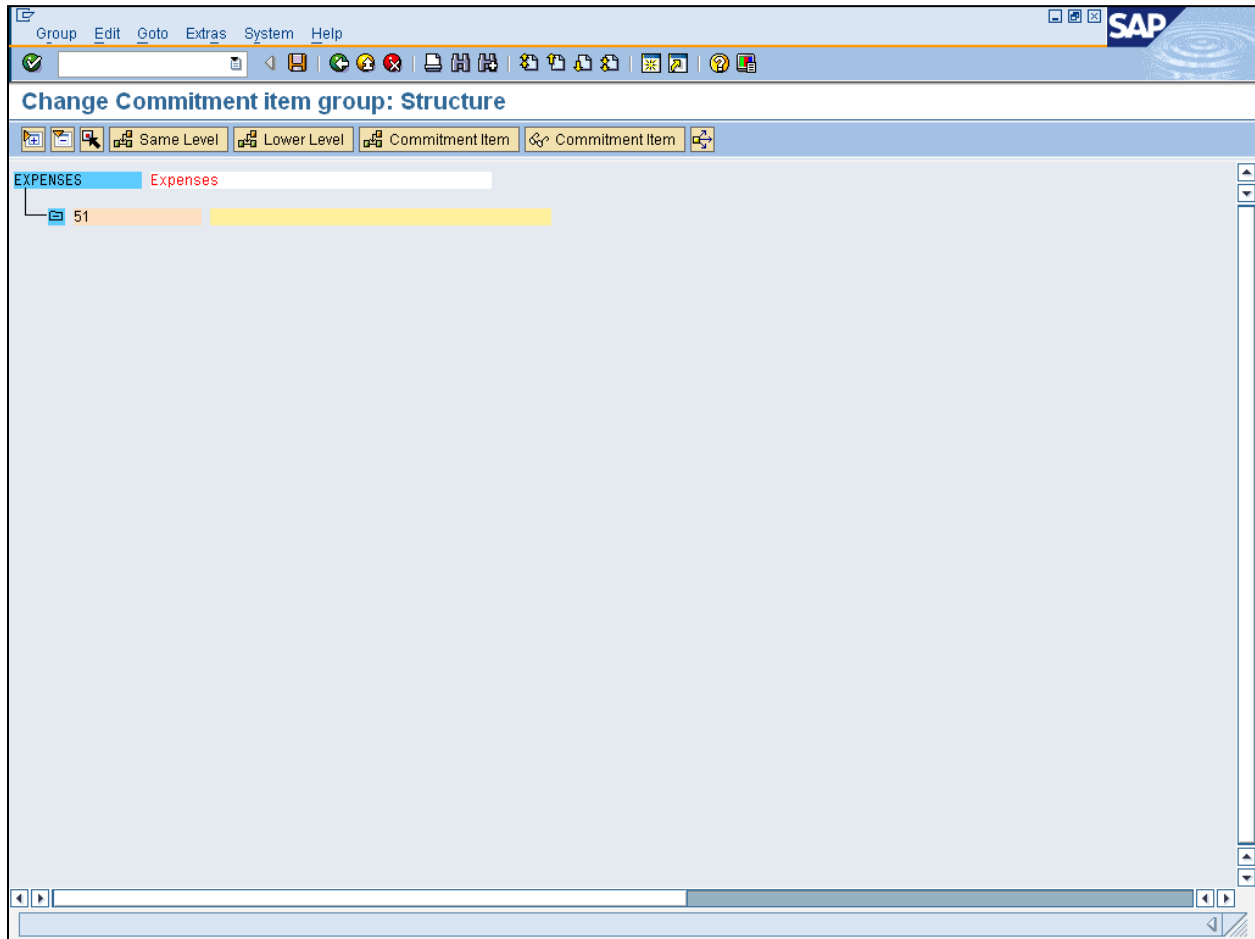
7. Click **Set Name** field .
8. As required, complete/review the following fields:

Field	R/O/C	Description
	R	Example: 51



FM_SETS_FIPEX1 Create New Commitment Item Group

Change Commitment item group: Structure



9. Click **Set description field** .

10. As required, complete/review the following fields:

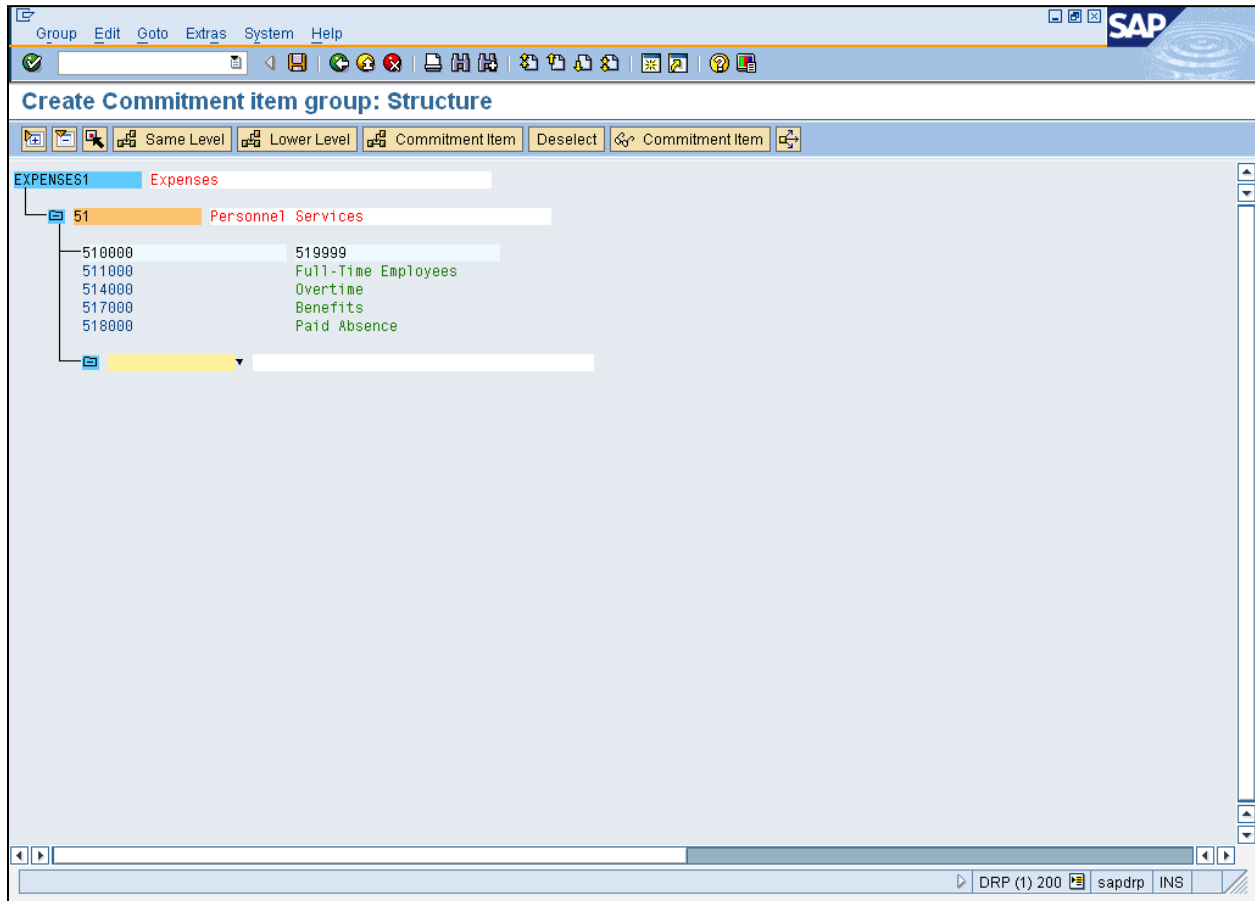
Field	R/O/C	Description
	R	Example: Personal Services

11. Click **Lower Level** Lower Level to display all the accounts in this group and insert a Commitment item group.



FM_SETS_FIPEX1 Create New Commitment Item Group

Create Commitment item group: Structure



12. Click **Set name** **51** .
13. Click **Same Level** **Same Level** to display all accounts in this group and insert a Commitment Item group.



FM_SETS_FIPEX1 Create New Commitment Item Group

Create Commitment item group: Structure

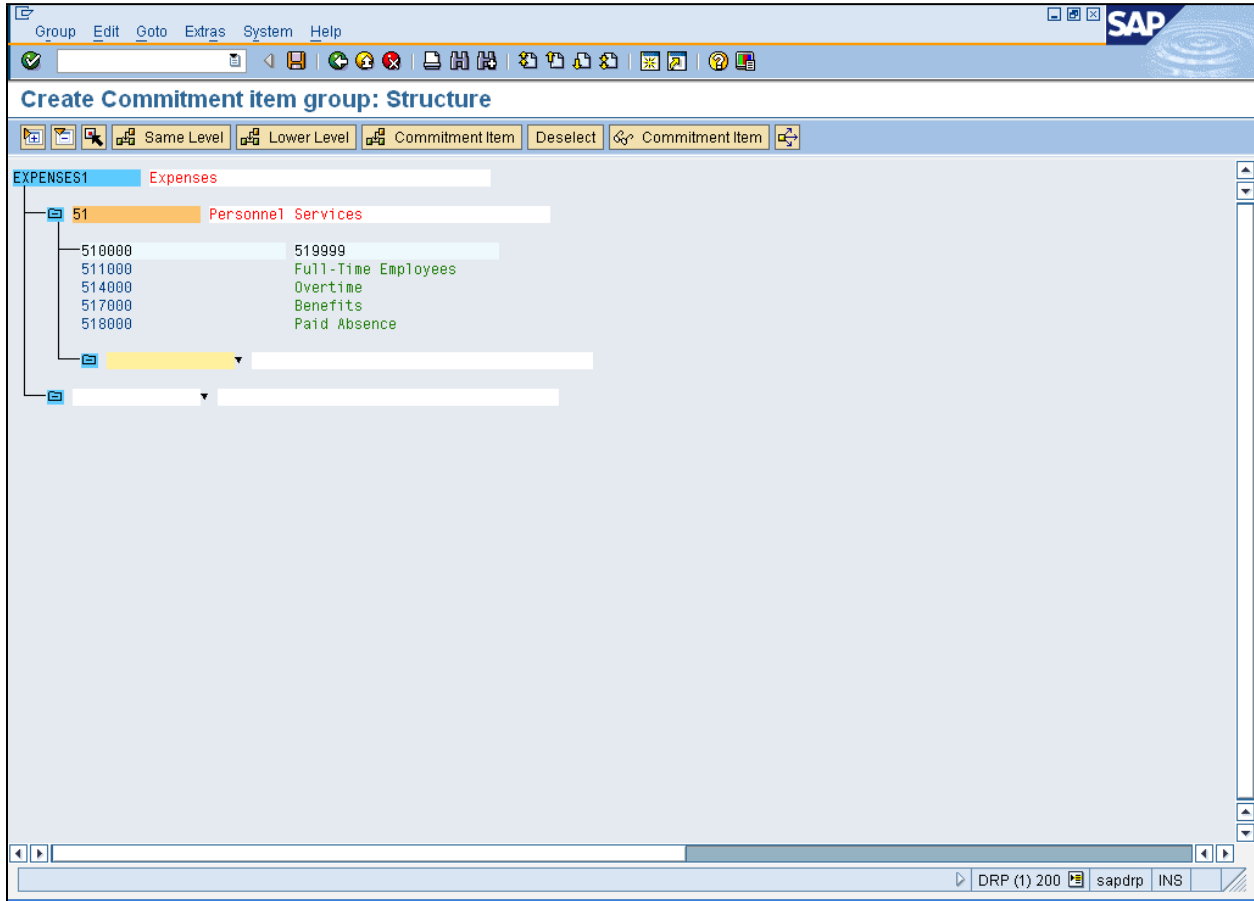
The screenshot displays the SAP 'Create Commitment item group: Structure' window. The main area shows a hierarchical tree structure. The root node is 'EXPENSES1 Expenses'. Underneath it, the '51 Personnel Services' group is expanded, revealing several sub-items: '510000', '511000 Full-Time Employees', '514000 Overtime', '517000 Benefits', and '518000 Paid Absence'. To the right of this tree, the '519999' group is also visible. The interface includes a menu bar at the top with options like 'Group', 'Edit', 'Goto', 'Extras', 'System', and 'Help'. A toolbar with various icons is located below the menu bar. The status bar at the bottom of the window displays 'DRP (1) 200 sapdrp INS'.

14. Click **Set Name** field .




FM_SETS_FIPEX1 Create New Commitment Item Group

Create Commitment item group: Structure



15. As required, complete/review the following fields:

Field	R/O/C	Description
	R	Example: 52


16. Click **Lower Level**  **Lower Level** to display all the accounts in this group and insert a Commitment Item group.



FM_SETS_FIPEX1 Create New Commitment Item Group

Create Commitment item group: Structure

17. Click **Save**  .

18. Click **Exit (Shift+F3)**  to return to the *Create Commitment item group: Initial Screen*.



SAP displays the message, "*The changes have been saved.*"



FM_SETS_FIPEX1

Work Instruction

FM_SETS_FIPEX1 Create New Commitment Item Group

Result

You have successfully created a Commitment Item Group.