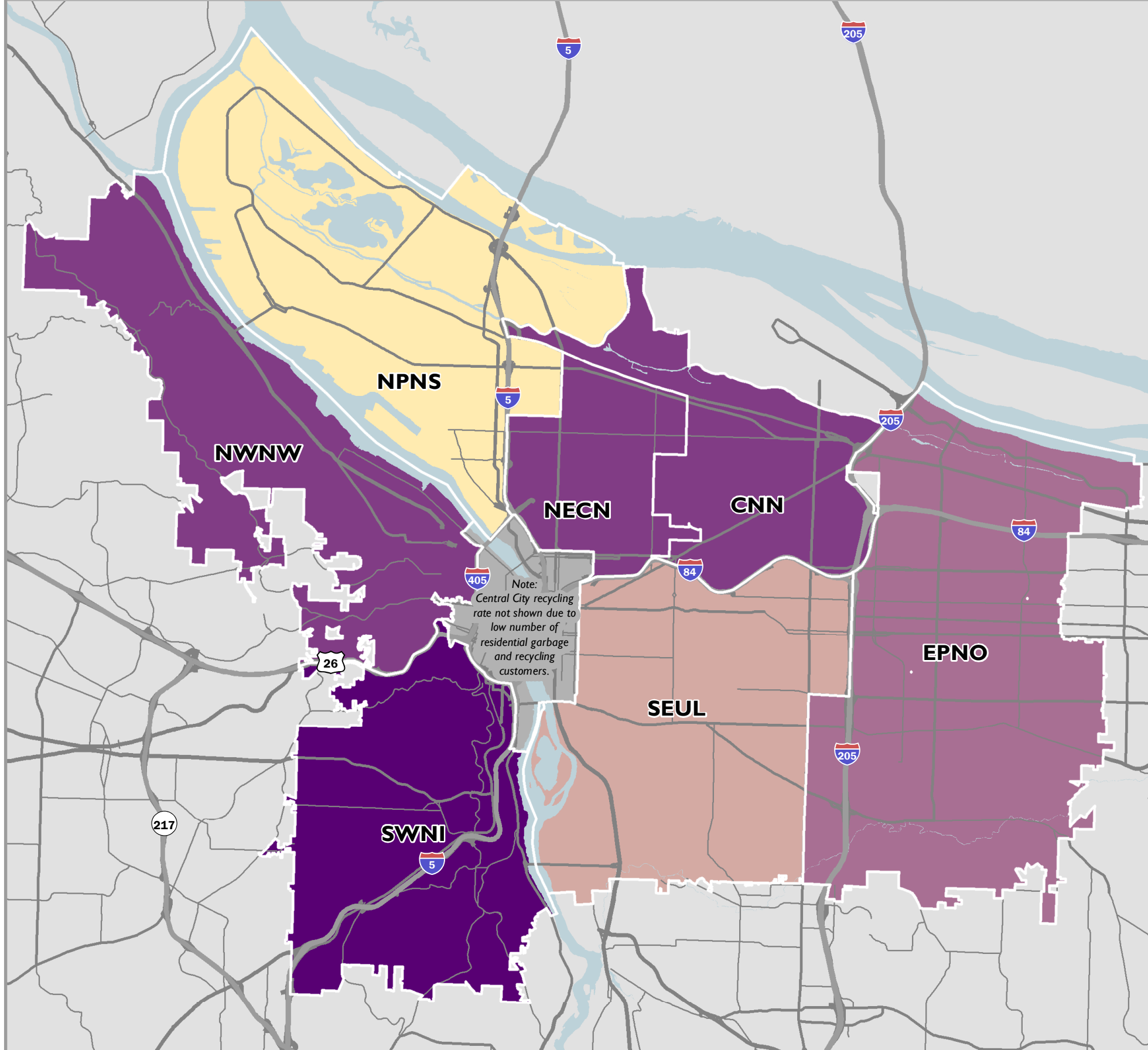


CURBSIDE RECOVERY RATE

FY2012-13 PORTLAND BUREAU OF PLANNING & SUSTAINABILITY



BUREAU NOTES

Curbside Recovery Rate

	Total Tons Collected	Total Tons Recovered	Recovery Rate (%)
CENT	NA	NA	NA
CNN	17,362	12,383	71.3%
EPNO	39,605	27,752	70.1%
NWNW	6,803	4,878	71.7%
NPNS	23,326	16,041	68.8%
NECN	23,572	16,815	71.3%
SEUL	58,460	40,792	69.8%
SWNI	24,209	17,722	73.2%

The 2007 Portland Recycles! Plan and the 2009 Climate Action Plan set citywide waste recovery goals (75 percent by 2015 and 90 percent by 2030, respectively). These objectives include waste generated in both the residential and commercial sectors. Portland businesses generate close to 80 percent of Portland's total waste, but the information is not reported geographically. In the residential sector, garbage and recycling companies in Portland serve geographic areas that do not correspond to neighborhood boundaries, and in many cases companies serve multiple areas that are not contiguous.

This map shows the total material recycled and composted through Portland's residential curbside program, as a percentage of all material collected curbside, measured by weight. The curbside recovery rate is calculated for each residential garbage and recycling company using the tonnage they report collecting from their single family households and smallplex (2-4 units) customers. The estimated recovery rates for each neighborhood coalition are calculated by averaging the percent of each coalition served by a given garbage and recycling company by that company's overall recovery rate.

The curbside recovery rates on this map are calculated based only on materials collected curbside and do not take into account material recycled through the bottle bill, dropped off at depots, or other means. Thus the recovery rates shown on this map are lower than the actual residential recovery rate calculated for the city.

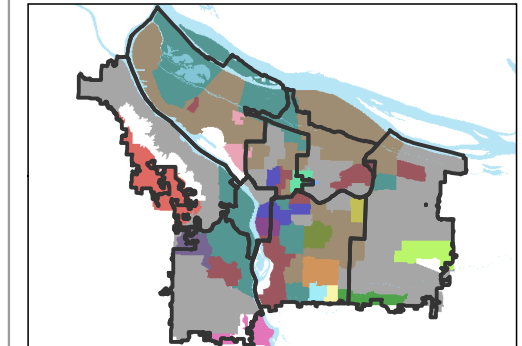
LEGEND

Percentage (%) of Total Curbside Material Recovered, 2012

- 69% or less
- 69.1% - 70%
- 70.1% - 71%
- 71.1% - 72%
- greater than 72%

GIS Data Classification Method - Equal Interval
Data Ranges by Coalition: 68.8% through 73.2%
Source: Bureau of Planning & Sustainability

Hauler Collection Areas



Mapping Geographies

- CENT** - Central City
- CNN** - Central Northeast Neighborhood
- EPNO** - East Portland Neighborhood Office
- NECN** - Northeast Coalition of Neighborhoods
- NPNS** - North Portland Neighborhood Services
- NWNW** - Neighbors West/Northwest
- SEUL** - Southeast Uplift Neighborhood Coalition
- SWNI** - Southwest Neighbors, Inc.

The information on this map was derived from City of Portland GIS databases. Care was taken in the creation of this map but it is provided "as-is". The City of Portland cannot accept any responsibility for error, omissions, or positional accuracy, and therefore, there are no warranties which accompany this product. However, notification of any errors will be appreciated.

