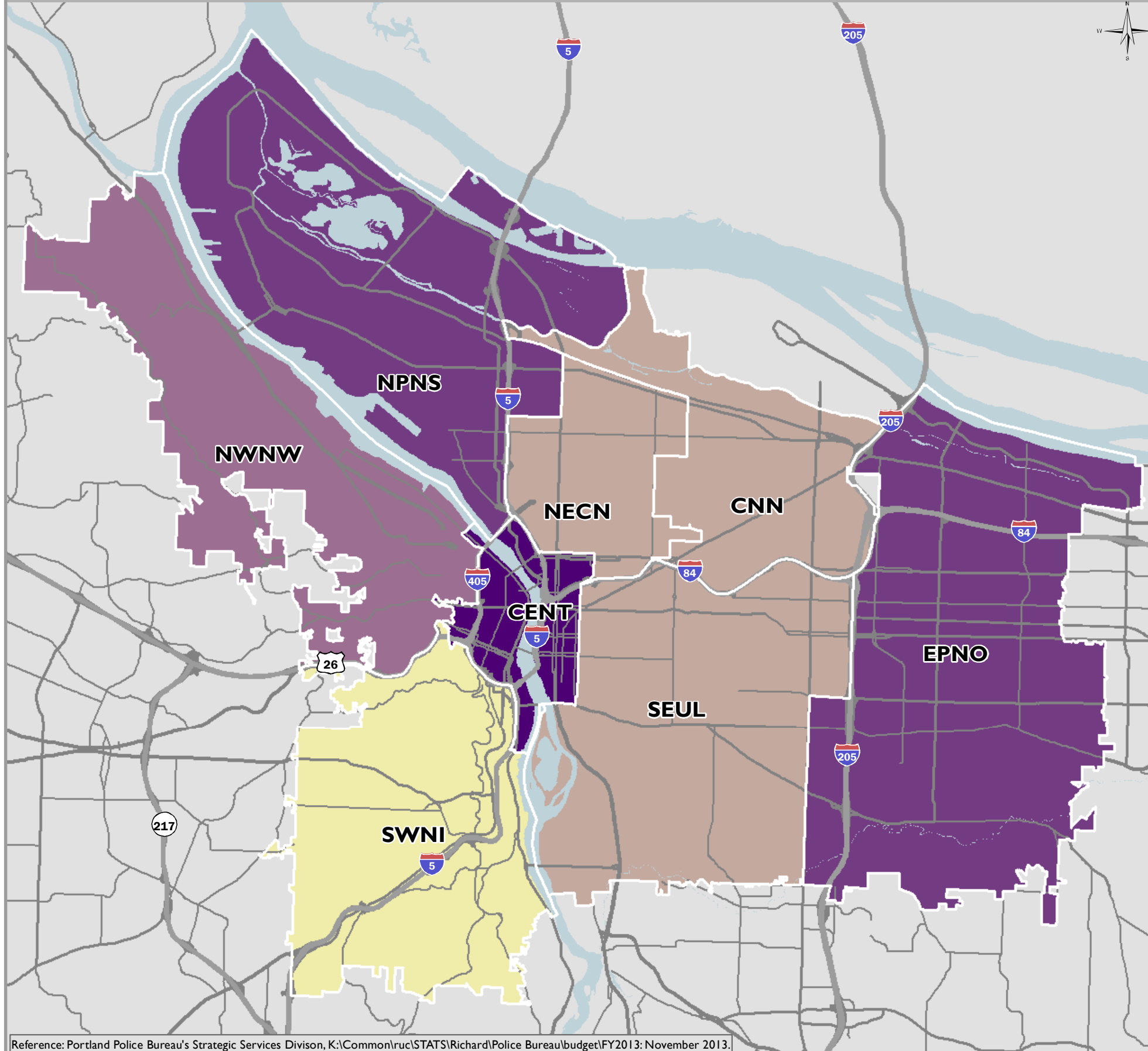


PART I CRIMES PER 1,000 RESIDENTS JULY 1, 2012 THROUGH JUNE 30, 2013

FY2012-13 PORTLAND POLICE BUREAU



BUREAU NOTES

Portland Police Bureau

The Portland Police Bureau serves the residents of Portland and the business community utilizing a three precinct (Central, East, and North) configuration. In the adopted FY 2013-14 budget there are 1,168 sworn and non-sworn full-time positions. 653 of these positions are Police Officers, and another 134 are Sergeants. In FY 2012-13 there were 699 Police Officer positions.

Level of Service

More than 30,000 Part I crimes are reported each year. In FY 2012-13 the rate was 56 Part I crimes per 1,000 residents. The main contributor to this number has been the property crimes of burglary, larceny, and motor vehicle theft. By contrast, the Person Part I crimes per 1,000 residents was 5, which has remained at this rate for several years.

Map Explanation

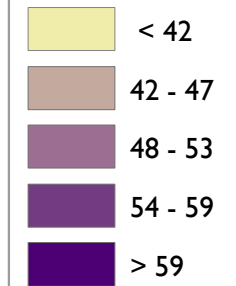
The crime rate is derived via the residential population, not employment, so the Central City's rate can be impacted by the workforce downtown and as its status as an economic and transportation hub and the location of social service providers. The Northwest area rate is also impacted by the workforce numbers relative to the residential population. The map also reflects the eastward movement of gang activity and related crime.

Information Source

Part I crimes are based on a classification system developed by the FBI and establishes a national standard. Part I person crimes: murder, rape, robbery, and aggravated assault; Part I property crimes: burglary, larceny, motor vehicle theft, and arson. The data represent Part I crimes for the most serious crime per case. Citywide numbers include crimes in Portland where an exact location was not available. For example, a child reports being a victim of a crime but is not sure of the location. Geographic area populations are from the Bureau of Planning and Sustainability and are 2012 estimates.

LEGEND

Part I Crimes Per 1,000 Residents



GIS Data Classification Method - Modified Equal Intervals

Part I Crimes Per 1,000 Residents Per Geographic Area

CENT:	163
CNN:	42
EPNO:	56
NECN:	42
NPNS:	57
NWNW:	51
SEUL:	46
SWNI:	22
Citywide:	56

Mapping Geographies

- CENT** - Central City
- CNN** - Central Northeast Neighbors
- EPNO** - East Portland Neighborhood Office
- NECN** - Northeast Coalition of Neighborhoods
- NPNS** - North Portland Neighborhood Services
- NWNW** - Neighbors West/Northwest
- SEUL** - Southeast Uplift Neighborhood Program
- SWNI** - Southwest Neighbors, Inc.

The information on this map was derived from City of Portland GIS databases. Care was taken in the creation of this map but it is provided "as-is". The City of Portland cannot accept any responsibility for error, omissions, or positional accuracy, and therefore, there are no warranties which accompany this product. However, notification of any errors will be appreciated.



Date 11-25-2013