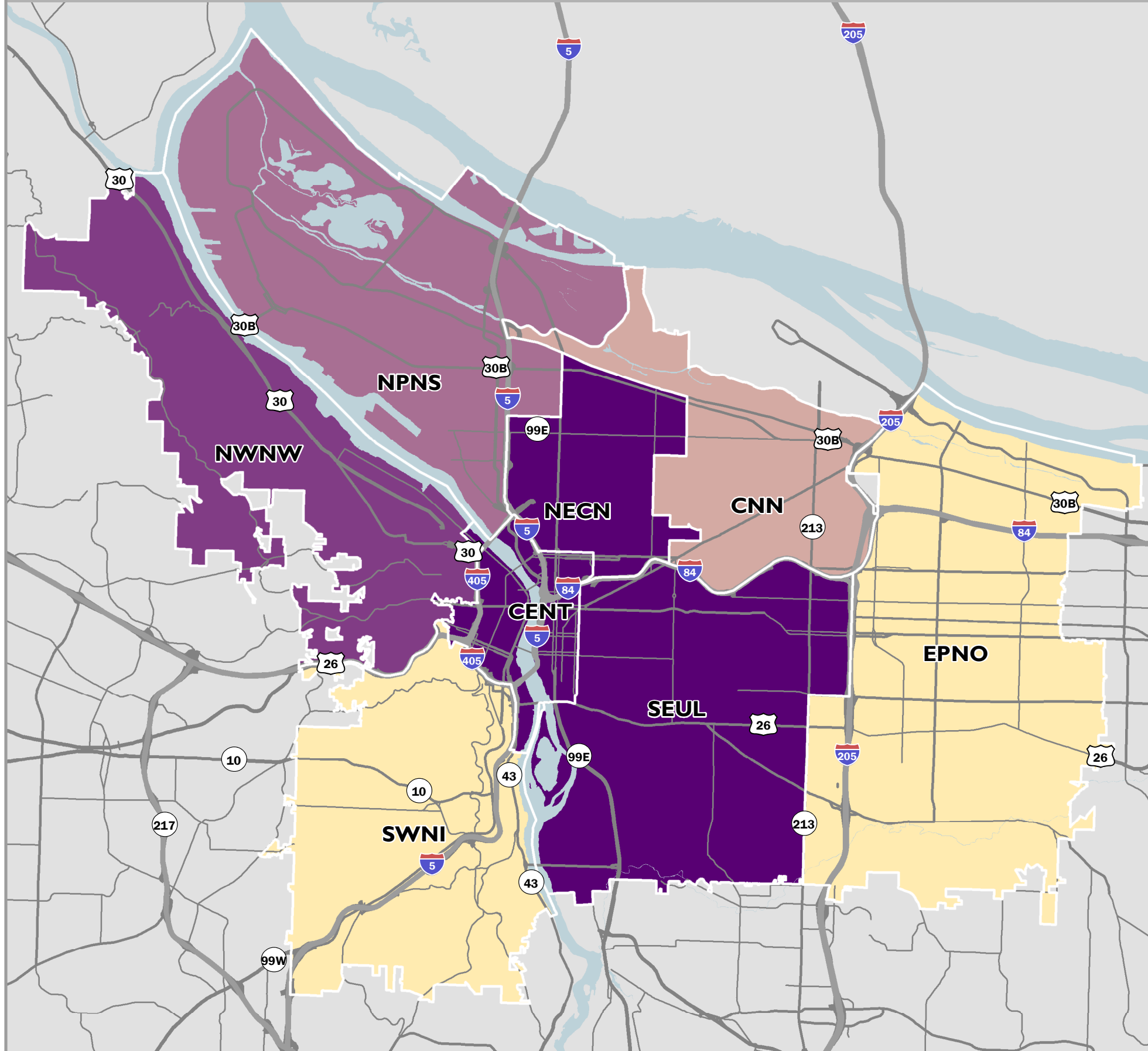


PERCENTAGE OF HOUSEHOLDS WITHIN HEALTHY, CONNECTED NEIGHBORHOODS

FY2014-15 PORTLAND BUREAU OF PLANNING & SUSTAINABILITY



BUREAU NOTES

Healthy, Connected Neighborhoods

	Total * Households	HH in Complete Neighborhoods	Percent(%) Households
CENT	26,591	21,318	80.2%
CNN	20,023	9,604	48.0%
EPNO	56,793	14,666	25.8%
NWNW	15,596	10,065	64.5%
NPNS	27,971	17,651	63.1%
NECN	27,443	22,529	82.1%
SEUL	72,162	50,897	70.5%
SWNI	30,912	4,089	13.2%

The 2012 Portland Plan set citywide goals for the number of households in complete neighborhoods (80% of total households within a complete neighborhood by 2035). This goal encompasses expanding access to active transportation options, recreation opportunities, and commercial services that enable people to meet their needs locally. Creating more complete neighborhoods throughout the city is a key direction to increase health outcomes, reduce automobile trips and carbon emissions, and expand access to goods and services.

The map shows the total number of households that live within a complete neighborhood, as a percentage of all households. The completeness index is calculated based on the relative proximity (1/4-mile to 1 mile) to the following features; 1-food access (grocery stores, independent markets, farmer's markets and community gardens); 2-recreation access (parks, community centers and natural areas); 3-transit access (light rail, frequent, and standard service); 4-bike connectivity (trails, neighborhood greenways, bike lanes, and local streets); 5-commercial services access(i.e. banks, neighborhood-serving retail, etc.); 6-street and sidewalk connectivity; and 7-elementary school proximity. To meet the completeness threshold, an area must have at least 5 of the 7 features. Areas within the Inner Neighborhoods benefit from high levels of transit service, vibrant neighborhood business districts, street connectivity, and a range of developed parks. The Eastern and Western neighborhoods generally lack transportation infrastructure and community services, but there are pockets that score high enough to be considered "complete".

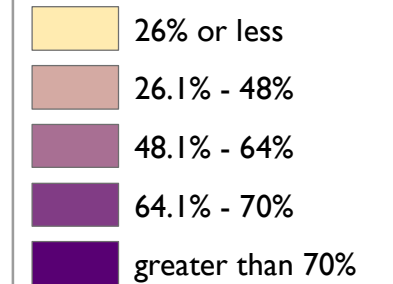
For more information, see the 20-minute Neighborhoods Report:

<http://www.portlandoregon.gov/bps/20min>

WWW.PORTLANDOREGON.GOV/BPS
Contact: Tom Armstrong, tom.armstrong@portlandoregon.gov

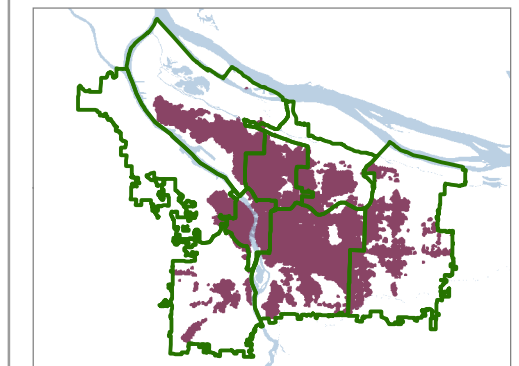
LEGEND

Percent (%) of Total Households in Healthy, Connected Neighborhood Areas



GIS Data Classification Method - Natural Breaks
Data Ranges by Coalition: 13.2% through 80.2%
Source: U.S. Census & BPS *BLI Allocation Model

Healthy, Connected Neighborhood Areas



Mapping Geographies

- CENT** - Central City
- CNN** - Central Northeast Neighborhood
- EPNO** - East Portland Neighborhood Office
- NECN** - Northeast Coalition of Neighborhoods
- NPNS** - North Portland Neighborhood Services
- NWNW** - Neighbors West/Northwest
- SEUL** - Southeast Uplift Neighborhood Coalition
- SWNI** - Southwest Neighbors, Inc.

The information on this map was derived from City of Portland GIS databases. Care was taken in the creation of this map but it is provided "as-is". The City of Portland cannot accept any responsibility for error, omissions, or positional accuracy, and therefore, there are no warranties which accompany this product. However, notification of any errors will be appreciated.

