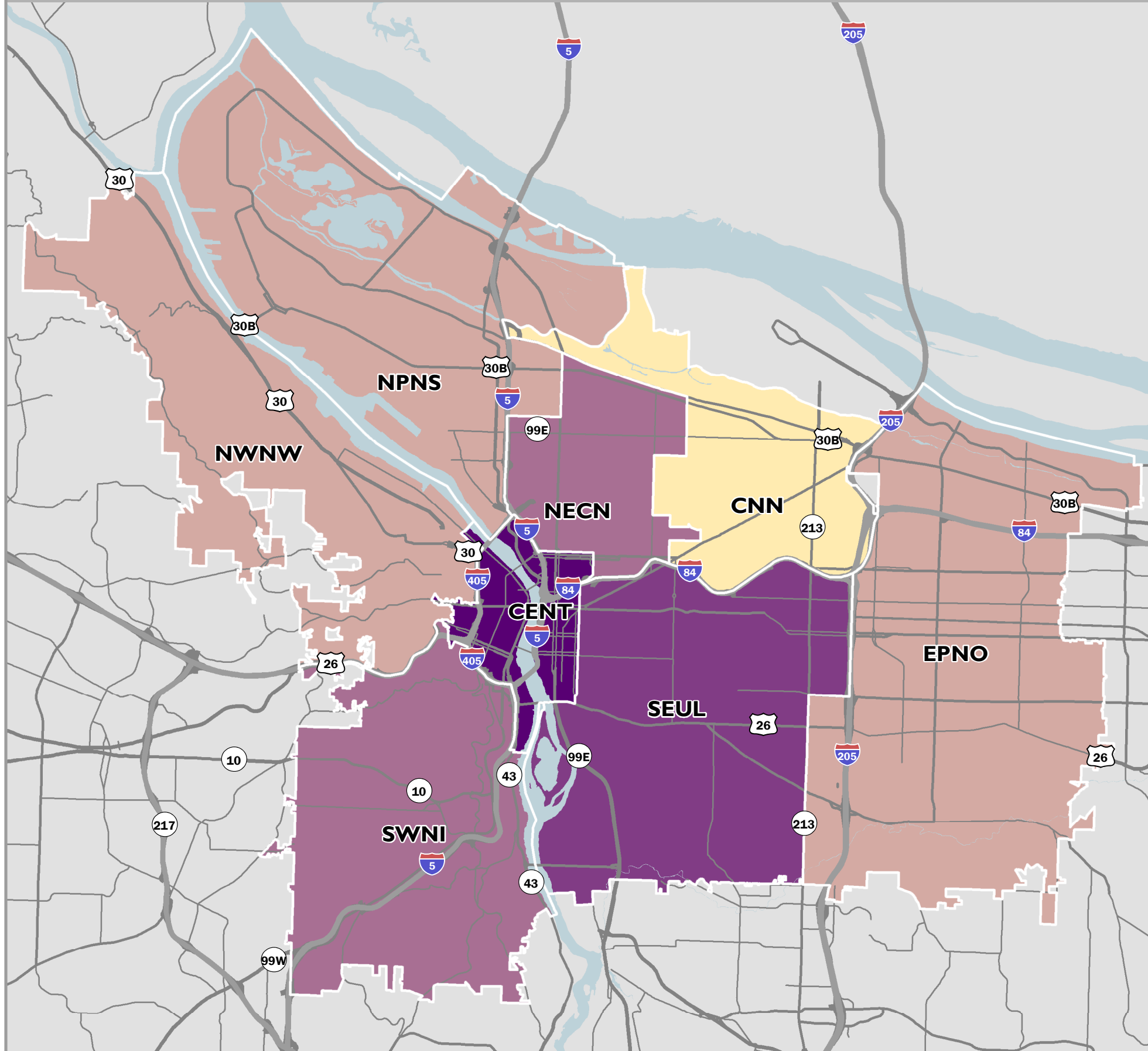


NEW RESIDENTIAL DWELLING UNITS

FY2014-15 PORTLAND BUREAU OF PLANNING & SUSTAINABILITY



BUREAU NOTES

New Residential Units

	Number of Permits	New Units Created	Percent of City Total
CENT	13	1,687	35%
CNN	77	79	2%
EPNO	148	255	5%
NWNW	34	289	6%
NPNS	156	434	9%
NECN	197	612	13%
SEUL	422	938	19%
SWNI	149	586	12%

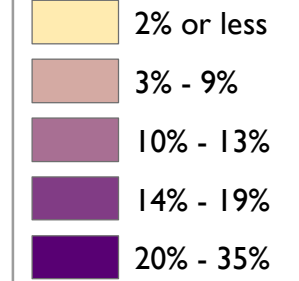
In FY2014-15, residential dwelling permit activity continued to be strong with permit applications for 4,900 units citywide. This level of activity shows continued recovery from the downturn of the Great Recession.

Two-thirds of the permit activity is located in the Central City and the close-in eastside neighborhoods of NECN and SEUL – reflecting strong market demand for housing in walkable neighborhoods with a wide range of amenities that are close to Central City jobs. The high levels of development activity also correspond to the neighborhoods with the highest scores for being a Healthy, Connected Neighborhoods.

The outer northeast neighborhoods of CNN saw the lowest level of development activity. EPNO also saw a relatively low level of development activity compared to their share of Portland households. The other neighborhoods have development activity levels commensurate with their share of Portland households.

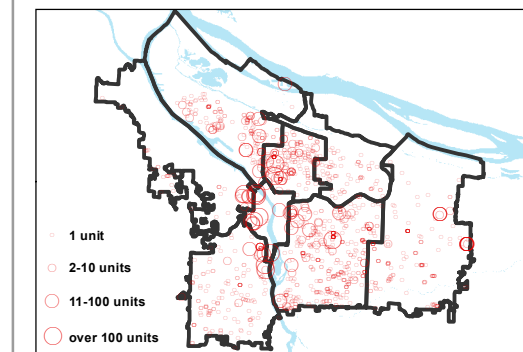
LEGEND

Percentage (%) of Total Residential Units Created



GIS Data Classification Method - Natural Breaks.
Data Ranges by Coalition: 1.6% through 34.6%
Source: Bureau of Development Services;
prepared by Bureau of Planning & Sustainability

Residential Permits by Number of Units



Mapping Geographies

- CENT** - Central City
- CNN** - Central Northeast Neighborhood
- EPNO** - East Portland Neighborhood Office
- NECN** - Northeast Coalition of Neighborhoods
- NPNS** - North Portland Neighborhood Services
- NWNW** - Neighbors West/Northwest
- SEUL** - Southeast Uplift Neighborhood Coalition
- SWNI** - Southwest Neighbors, Inc.

The information on this map was derived from City of Portland GIS databases. Care was taken in the creation of this map but it is provided "as-is". The City of Portland cannot accept any responsibility for error, omissions, or positional accuracy, and therefore, there are no warranties which accompany this product. However, notification of any errors will be appreciated.

