

working for clean rivers



# Portland Harbor Superfund Site

February 7, 2017

Annie Von Burg

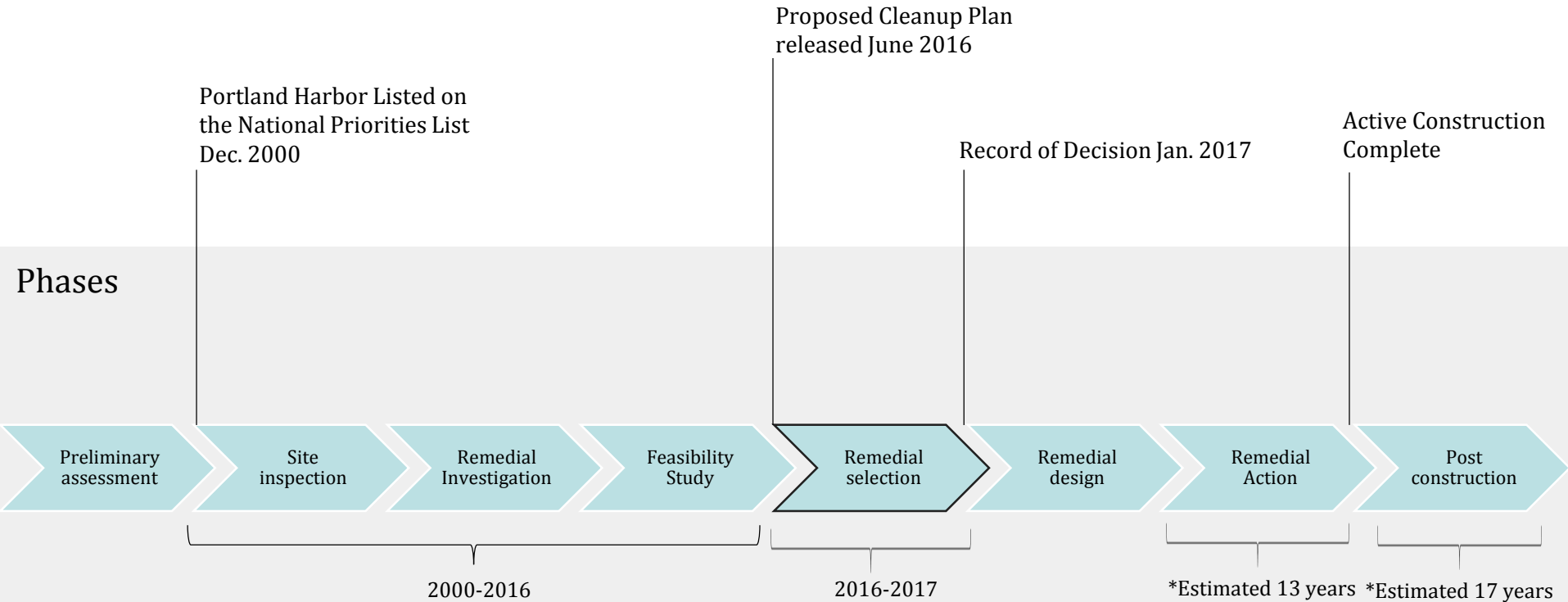


ENVIRONMENTAL SERVICES  
CITY OF PORTLAND

NICK FISH, COMMISSIONER  
MICHAEL JORDAN, DIRECTOR

# Superfund Process

## Milestones



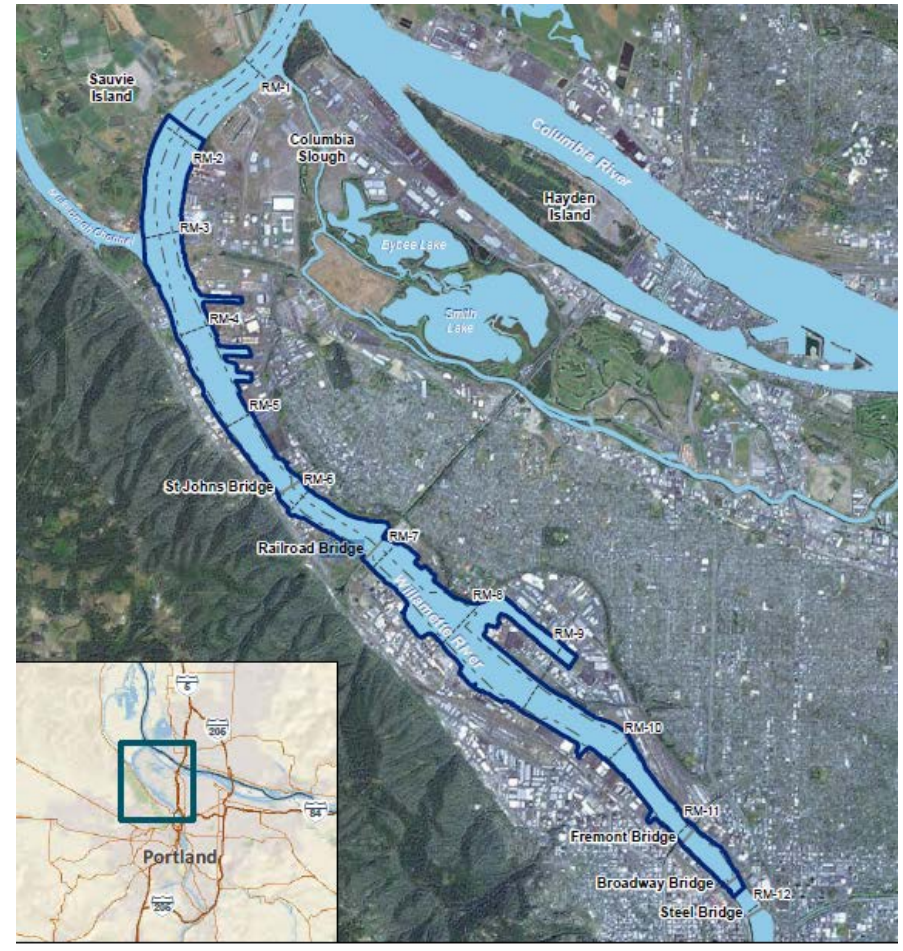
# Portland Harbor Superfund Site

Location:

10 mile stretch from Sauvie island to the Steel Bridge

Main contaminants of concern:

- PCB's
- PAH's
- DDx
- Dioxins/Furans



LEGEND  
■ Portland Harbor Study Area  
— River miles  
- - - Navigation Channel



# Summary of significant changes

	Proposed Cleanup Plan (Alternative I)	Final Cleanup Plan (Alternative F modified)	Change
<b>Cost</b>	\$746 million	1.05 billion	\$304 million (41%) increase
<b>Time</b>	7 years active construction (4 months/year)	13 years of active construction (4 months/year)	6 year (86%) increase
<b>In-River Dredging</b>	150 acres	215 acres	65 acre (43%) increase
<b>In-River Capping</b>	64 acres	118 acres	54 acre (84%) increase
<b>Monitored Natural recovery</b>	1,876 acres	1,774 acres	102 acre (5%) decrease
<b>Excavate/cap river bank</b>	19,471 lineal ft.	23,305 lineal ft.	3,834 (20%) increase
<b>Total in-river cubic yard excavated</b>	1,752,000 cubic yards	3,017,000 cubic yards	1,265,000 (72%) increase
<b>Allowable fish meals per year</b>	13 fish meals a year	16 fish meals a year	3 meals (23%) increase



# Notable changes in the final cleanup plan

- A confined disposal facility (CDF) is not included
- Consistency in remedial action levels (RALs)
- Cost estimates
- Schedule
- Smaller units will be considered
- Much more flexibility



# Priorities moving forward

---

## *Shifting focus from investigation to implementation*

1. Work with the State and interested parties to get remedial design started as soon as possible.
2. Facilitate a multi-agency approach to public involvement and community benefits.
3. Explore opportunities for early action in public access areas and areas that help the cleanup move forward.
4. Work with other public agencies to coordinate key cleanup functions for site-wide implementation.

