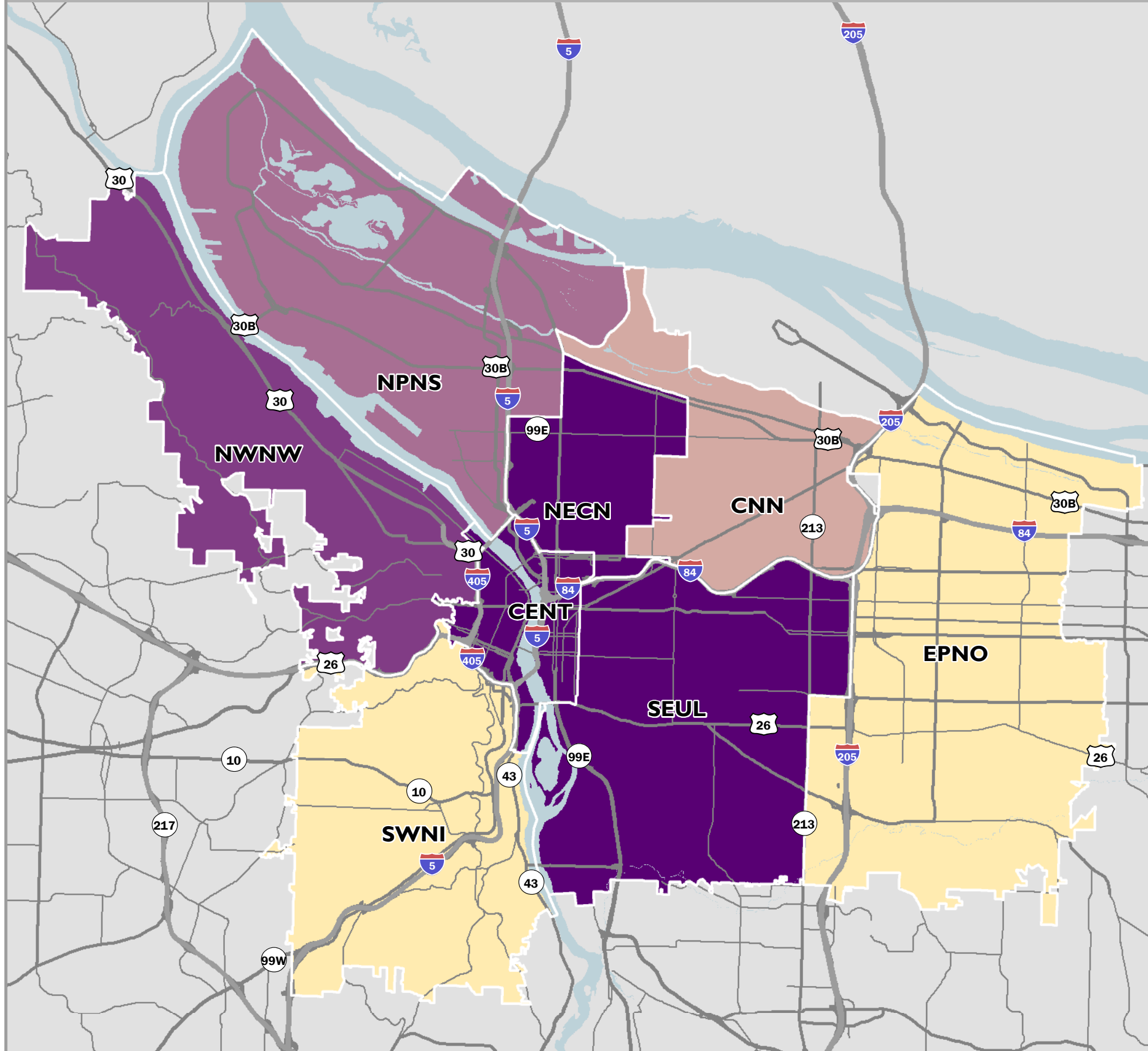


PERCENTAGE OF HOUSEHOLDS WITHIN HEALTHY, CONNECTED NEIGHBORHOODS

FY2015-16 PORTLAND BUREAU OF PLANNING & SUSTAINABILITY



BUREAU NOTES

Healthy, Connected Neighborhoods

	Total* Households	HH in Complete Neighborhoods	Percent (%) Households
CENT	30,103	23,963	80%
CNN	20,188	9,691	48%
EPNO	57,339	14,778	26%
NWNW	16,199	10,646	66%
NPNS	28,804	18,167	63%
NECN	28,530	23,590	83%
SEUL	73,976	52,343	71%
SWNI	31,788	4,128	13%

The 2012 Portland Plan set citywide goals for the number of households in complete neighborhoods (80% of total households within a complete neighborhood by 2035). This goal encompasses expanding access to active transportation options, recreation opportunities, and commercial services that enable people to meet their needs locally. Creating more complete neighborhoods throughout the city is a key direction to increase health outcomes, reduce automobile trips and carbon emissions, and expand access to goods and services.

The map shows the total number of households that live within a complete neighborhood, as a percentage of all households. The completeness index is calculated based on the relative proximity (1/4-mile to 1 mile) to the following features; 1-food access (grocery stores, independent markets, farmer's markets and community gardens); 2-recreation access (parks, community centers and natural areas); 3-transit access (light rail, frequent, and standard service); 4-bike connectivity (trails, neighborhood greenways, bike lanes, and local streets); 5-commercial services access (i.e. banks, neighborhood-serving retail, etc.); 6-street and sidewalk connectivity; and 7-elementary school proximity. To meet the completeness threshold, an area must have at least 5 of the 7 features. Areas within the Inner Neighborhoods benefit from high levels of transit service, vibrant neighborhood business districts, street connectivity, and a range of developed parks. The Eastern and Western neighborhoods generally lack transportation infrastructure and community services, but there are pockets that score high enough to be considered "complete".

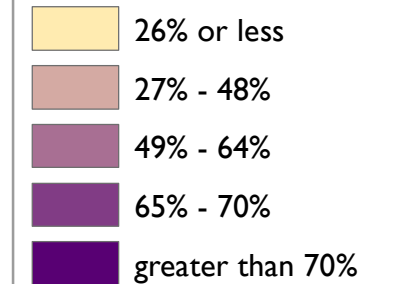
For more information, see the 20-minute Neighborhoods Report:

<http://www.portlandoregon.gov/bps/20min>

WWW.PORTLANDOREGON.GOV/BPS
Contact: Tom Armstrong, tom.armstrong@portlandoregon.gov

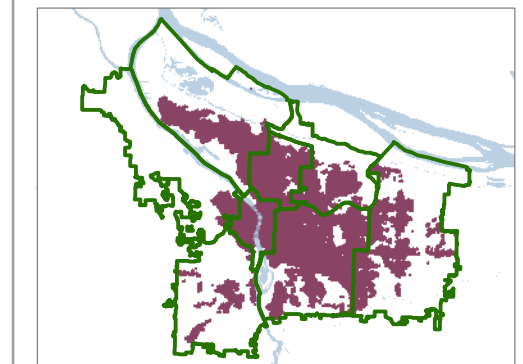
LEGEND

Percent (%) of Total Households in Healthy, Connected Neighborhood Areas



GIS Data Classification Method - Natural Breaks
Data Ranges by Coalition: 12.9% through 82.7%
Source: U.S. Census & BPS *BLI Allocation Model

Healthy, Connected Neighborhood Areas



Mapping Geographies

- CENT** - Central City
- CNN** - Central Northeast Neighborhood
- EPNO** - East Portland Neighborhood Office
- NECN** - Northeast Coalition of Neighborhoods
- NPNS** - North Portland Neighborhood Services
- NWNW** - Neighbors West/Northwest
- SEUL** - Southeast Uplift Neighborhood Coalition
- SWNI** - Southwest Neighbors, Inc.

The information on this map was derived from City of Portland GIS databases. Care was taken in the creation of this map but it is provided "as-is". The City of Portland cannot accept any responsibility for error, omissions, or positional accuracy, and therefore, there are no warranties which accompany this product. However, notification of any errors will be appreciated.

