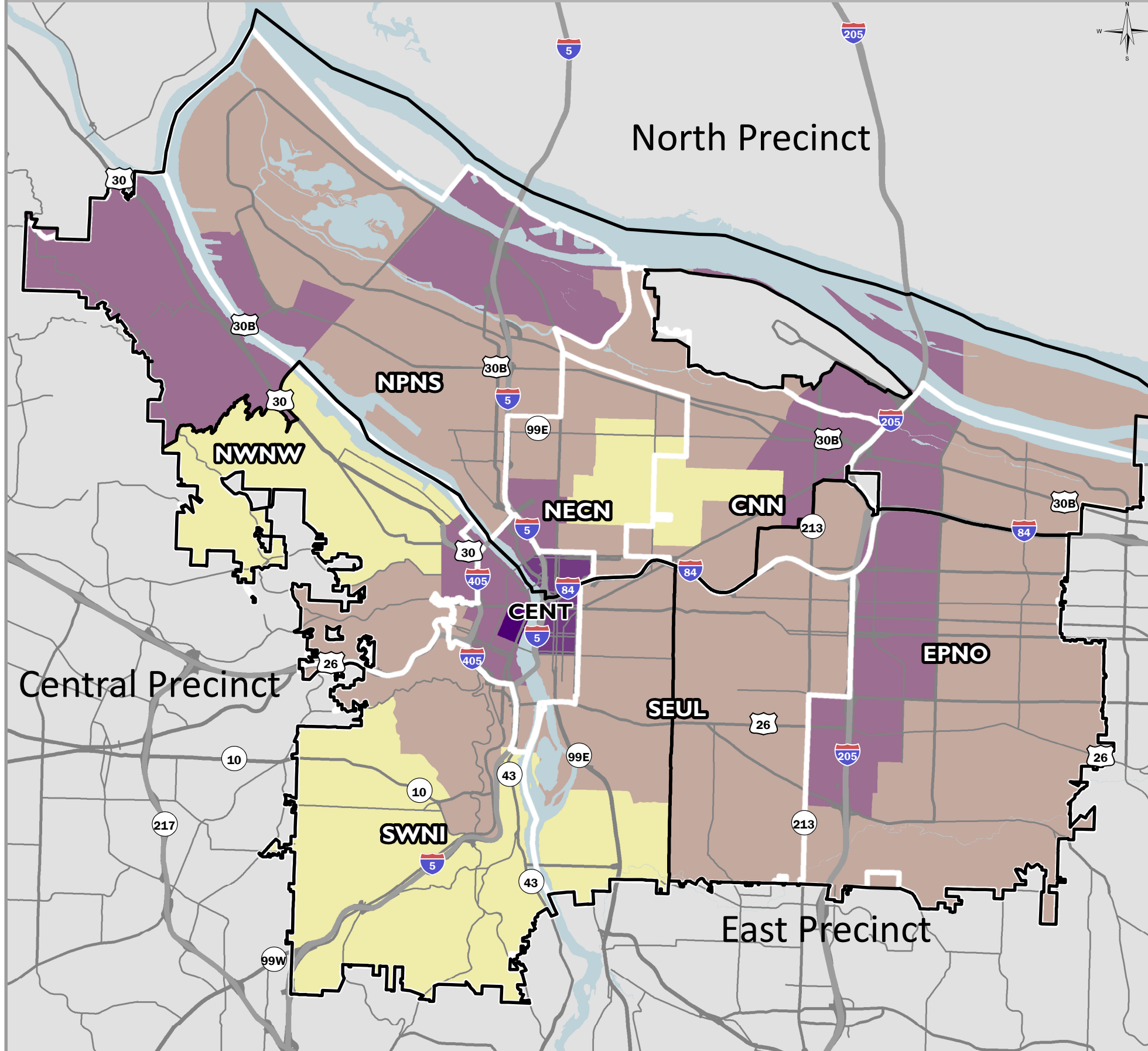


REPORTED OFFENSES PER 1,000 RESIDENTS JULY 1, 2015 THROUGH JUNE 30, 2016

FY2015-16 PORTLAND POLICE BUREAU



BUREAU NOTES

Portland Police Bureau

The Portland Police Bureau (PPB) serves the residents and the business community of Portland. The PPB uses a three precinct configuration (Central, East, and North) comprised of 60 patrol districts. The adopted budget for fiscal year 2016-17 includes 1,213 full-time positions, 944 of these positions are sworn. The budgeted position for sworn members includes 651 officers and 135 sergeants. Actual staffing as of January 2017 included 616 officers and 116 sergeants. Difficulties recruiting, hiring, and retaining officers has led to staffing shortages.

Level of Service

The National Incident-Based Reporting System (NIBRS) provides a standard process for law enforcement agencies to report crime statistics. NIBRS was designed to provide a more comprehensive view of the occurrence of crime when compared to traditional reporting systems. NIBRS does this by reporting all unique offenses within an incident rather than just the most serious offense and by reporting more offense types.

Group A offenses are comprised of the most serious and/or prevalent crimes against persons, property, or society. Group A includes 51 offense types grouped into 24 offense categories. Approximately 56,000 Group A Offenses were reported in FY 2015-16. The majority (81%) were Crimes Against Property. Larceny Offenses (44%) was the most common offense category and Theft from Motor Vehicle (18%) was the most common offense type.

Map Discussion

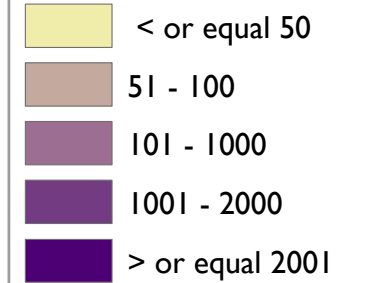
The map displays Group A Offenses by police district per 1,000 residents (Crime Rate).

Police districts vary in population and area. Crime rate is based on residential population and does not account for the influence of non-residential populations. Areas such as Downtown and the Lloyd District have low residential populations and high reported crime. The crime rate in these areas are impacted by the non-residents who frequent the areas for employment, entertainment, or transportation.

PPB adopted the National Incident-Based Reporting System (NIBRS) in April 2015. NIBRS offense statistics are not comparable to Summary Reporting System (Part I/II Crime) statistics. FY 2015-16 was the first full year using the NIBRS reporting system.

LEGEND

OFFENSES Crime Rate per Police District



GIS Data Classification Method - Equal Intervals

Crime Rate Per Police Precinct

FY2015-16

| | |
|-------------------|-----|
| NORTH PRECINCT: | 94 |
| CENTRAL PRECINCT: | 105 |
| EAST PRECINCT: | 86 |
| Citywide: | 94 |

Mapping Geographies

- CENT** - Central City
- CNN** - Central Northeast Neighbors
- EPNO** - East Portland Neighborhood Office
- NECN** - Northeast Coalition of Neighborhoods
- NPNS** - North Portland Neighborhood Services
- NWNW** - Neighbors West/Northwest
- SEUL** - Southeast Uplift Neighborhood Program
- SWNI** - Southwest Neighbors, Inc.

The information on this map was derived from City of Portland GIS databases. Care was taken in the creation of this map but it is provided "as-is". The City of Portland cannot accept any responsibility for error, omissions, or positional accuracy, and therefore, there are no warranties which accompany this product. However, notification of any errors will be appreciated.

