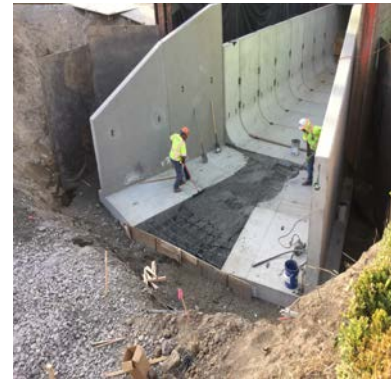




PORTLAND BUREAU OF ENVIRONMENTAL SERVICES

working for clean rivers



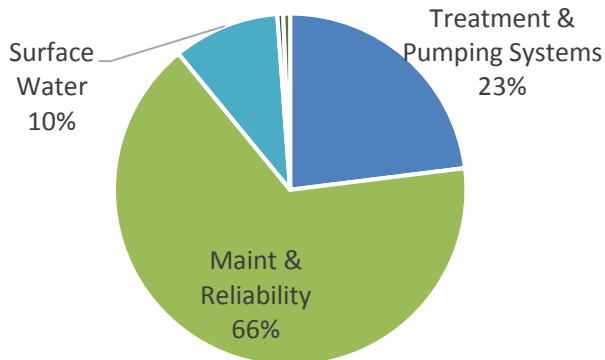
CIP Program Update FY17-18, April 2018

Through February, \$40M have been spent on Capital programs and major projects. The bureau's year-end projection is to spend \$81.4M or roughly 71% of the annual budget. Major accomplishments and Upcoming work are listed in the next pages.

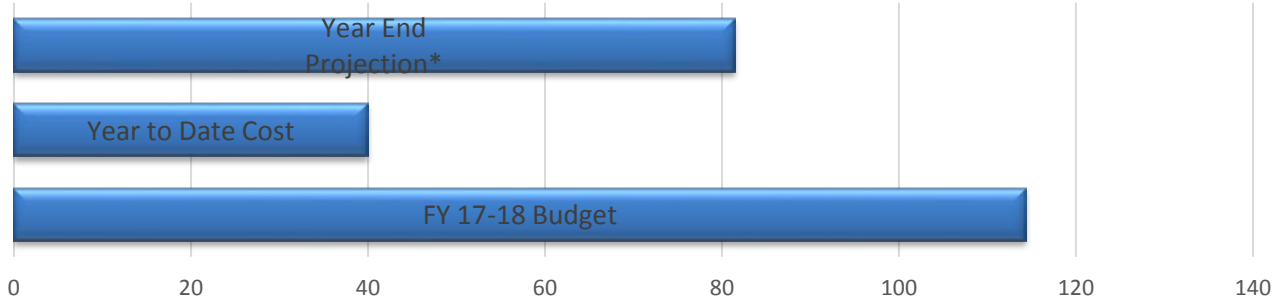
BES MAJOR CIP PROGRAMS

- Maintenance and Reliability
- Sewage Treatment
- Surface Water Management
- Systems Development

FY 18 Expenditure



FY18 Budget vs Expenditure



2017-2018 – Major Accomplishments

- Opened compressed natural gas fueling station in March 2018 at Columbia Blvd Water Treatment Plant (CBWTP). Facility will eventually provide renewable CNG for city fleet.



- Selected design, and program support firms and short-listed contractors for Secondary Treatment Expansion at CBWTP.
- Submitted land use applications covering all CBWTP work for the next ten years.
- Completed 30% design of the large plant improvement program at Tryon Creek Water Treatment Plant.
- Removed two culverts at Catkin Marsh to improve hydrology and water quality.
- Began construction to reconnect Oaks Bottom to the Willamette River and enhance the 75-acre wetland for salmon and wildlife. The project is a partnership with the U.S. Army Corps of Engineers.
- Designed, permitted, and bid Oxbow Permanent Scour Repair to restore essential fish habitat and protect adjacent roads and property from erosion.
- Replaced SW 45th Ave. Culvert on Fanno Creek to improve capacity and allow fish movement
- Daylighted a tributary of Fanno Creek through a section of Albert Kelly Park.



- Completed construction of SW 19th Ave joint BES/PBOT transportation and stormwater management project.
- Constructed Woodlawn King Alleys; lined 15,165 LF of existing pipe and 250 laterals, and installed 763 LF of new pipe and 540 LF of laterals.
- Constructed CSO Pressure Relief which installed three vaults to release pressure surges from the CSO storage system.
- Slabtown Sewer Replacement: Completed design, issued construction NTP; project will build 8,400-ft of new and replacement combined and storm sewers, and a structural saddle and two diversion structures for the Northwest Interceptor in a rapidly developing area north of Pearl District, totaling approx. \$9M in improvements

- Sunnyside East: Completed design and Ad Phase. Project will build 2,800 new and replacement combined and sanitary sewers, and 16 vegetated stormwater facilities in Southeast Portland’s Sunnyside Neighborhood, totaling \$2.7M in improvements.
- 30th & Klickitat: Lined 440’ of 8” CSP sewer, 165’ of 6” sewer laterals, 11 cleanouts.
- SW Flower & Kelly: Lining 271’ of 22” VSP sewer, 23’ spot repair, 1 cleanout.

2018-2019 – Upcoming Work

- CBWTP secondary treatment expansion design will kick-off and contractor is scheduled to be under contract
- CBWTP Biogas Treatment Facility construction will kick off. This will provide the renewable component to the CNG facility.
- TCWTP headworks project will continue to progress into final design.



- Completing the design of stormwater treatment for Parkrose neighborhood as part of the Columbia Corridor Neighborhoods to the River Program.
- Complete design and initiate construction of the Boones Ferry Road Bridge project on Tryon Creek.
- Construction of two major outfall repair projects in Stephens Creek
- Construction on a major stormwater management/retrofit project at SW Beaverton Hillsdale Hwy. and Shattuck Rd.
- Constructed Woodlawn King Streets which installs new pipe and service laterals.
- Southeast Interceptor; Do spot repairs on a sewer main via injection grouting and liner repair on two sections of mainline pipe.
- Montavilla North and South: Install and repair neighborhood sewers by installing new pipe and service laterals using pipe bursting, CIPP and or lined laterals.
- Complete Pre-Design of Goose Hollow Sewer Rehabilitation to plan the repair, replacement and upgrade of the existing neighborhood sewer system.
- SW Capitol Hwy Stormwater Improvements – joint City project (PBOT, BES, PWB) that will build multi-modal transportation, install new stormwater collection, conveyance, and treatment

systems, and upgrade existing water infrastructure along a one-mile stretch of SW Capitol Hwy between Taylor’s Ferry and Multnomah Blvd.

- SW Hamilton Terr: Construct new sewer using pipe bursting, private plumbing modifications, resolve NCS lateral.
- NE 8th/Braze: 340’ of 12” pipe burst, 125’ of 6” sewer laterals
- Burlingame Phase 1 & 2: Complete design/advert of Phase 1 and near completion of design.
- NE 10th & Cleveland – Rehab/reconstruct VSP and laterals.
- Slough Out Fall 104B construction should be completed in FY18-19. Part of the Columbia Slough cleanup effort in which 53 stormwater facilities will be built to clean stormwater prior to reaching the slough. Part of a Record of Decision(ROD) with DEQ.
- SE 10th Ave and SE Salmon capacity improvement project. The project will upsize 384LF of combination sewer and up size 5 inlets to reduce flooding in a low area that has historic flooding problems.
- Slough Out Fall 100 will be a collaborative effort between BES and PBOT to improve the quality of stormwater that discharges into the Columbia Slough in accordance to a ROD with DEQ. Proposed construction to be FY19-20.
- Beaverton-Hillsdale Highway, stormwater retrofit to improve the water quality of runoff that discharges into Fanno Creek. The project that will install seven stormwater filter catch basins and four stormwater facilities, construction in FY18-19. The stormwater catch basins are part of a pilot program to evaluate the storm filter for future use within the city.

