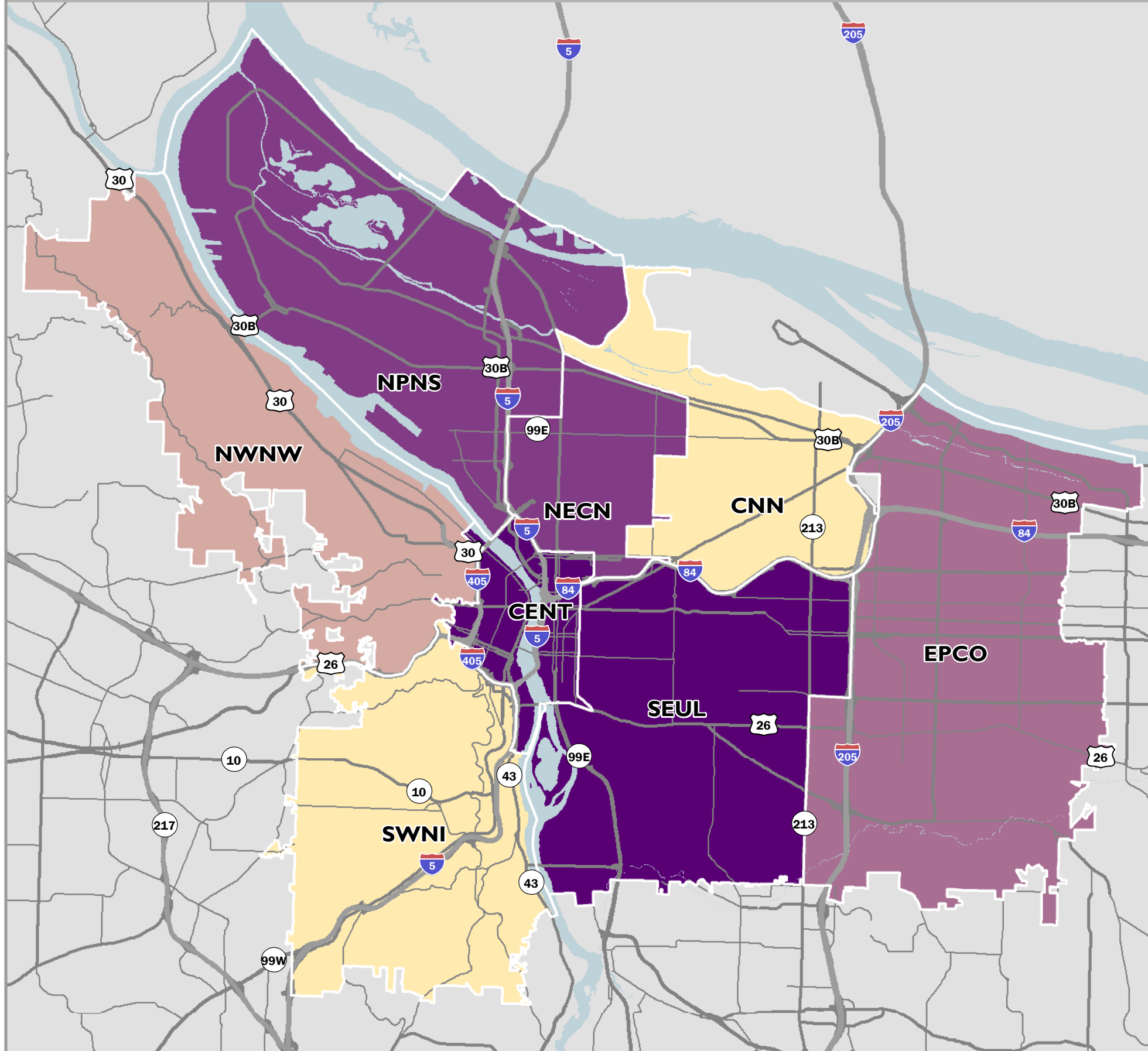


NEW RESIDENTIAL DWELLING UNITS

FY2017-18 PORTLAND BUREAU OF PLANNING & SUSTAINABILITY



BUREAU NOTES

New Residential Units

	New Residential Permits	New Units Created	Percent of Total
CENT	16	1,589	23%
CNN	132	181	3%
EPCO	209	567	8%
NWNW	24	342	5%
NPNS	221	819	12%
NECN	206	890	13%
SEUL	445	2,402	34%
SWNI	96	235	3%

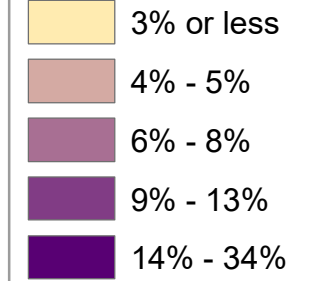
In FY2017-18, residential dwelling permit activity continued to be strong with building permits issued for 7,025 units citywide. This level of activity shows continued recovery from the downturn of the Great Recession.

Three-quarters of the permit activity (5,223 units) is located in the Central City and the close-in inner neighborhoods of NWNW, NECN and SEUL – reflecting strong market demand for housing in walkable neighborhoods with a wide range of amenities that are close to Central City jobs. The high levels of development activity also correspond to the neighborhoods with the highest scores for being a Healthy, Connected Neighborhoods.

The SWNI (235 units) and CNN (181 units) saw the lowest level of development activity. EPCO also saw a relatively low level of development activity compared to their share of Portland households. The other neighborhoods have development activity levels roughly commensurate with their share of Portland households.

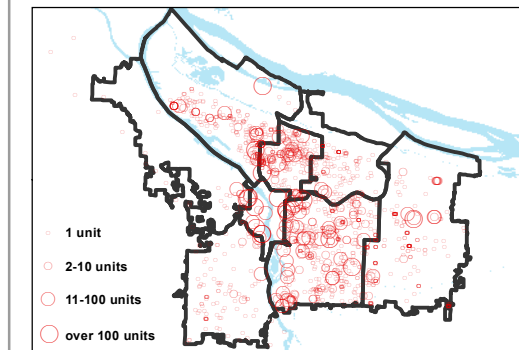
LEGEND

Percentage (%) of Total Residential Units Created



GIS Data Classification Method - Natural Breaks
Data Ranges by Coalition: 2.6% through 34.2%
Source: Bureau of Development Services;
prepared by Bureau of Planning and Sustainability

Residential Permits by Number of Units



Mapping Geographies

- CENT** - Central City
- CNN** - Central Northeast Neighborhood
- EPCO** - East Portland Community Office
- NECN** - Northeast Coalition of Neighborhoods
- NPNS** - North Portland Neighborhood Services
- NWNW** - Neighbors West/Northwest
- SEUL** - Southeast Uplift Neighborhood Coalition
- SWNI** - Southwest Neighbors, Inc.

The information on this map was derived from City of Portland GIS databases. Care was taken in the creation of this map but it is provided "as-is". The City of Portland cannot accept any responsibility for error, omissions, or positional accuracy, and therefore, there are no warranties which accompany this product. However, notification of any errors will be appreciated.

