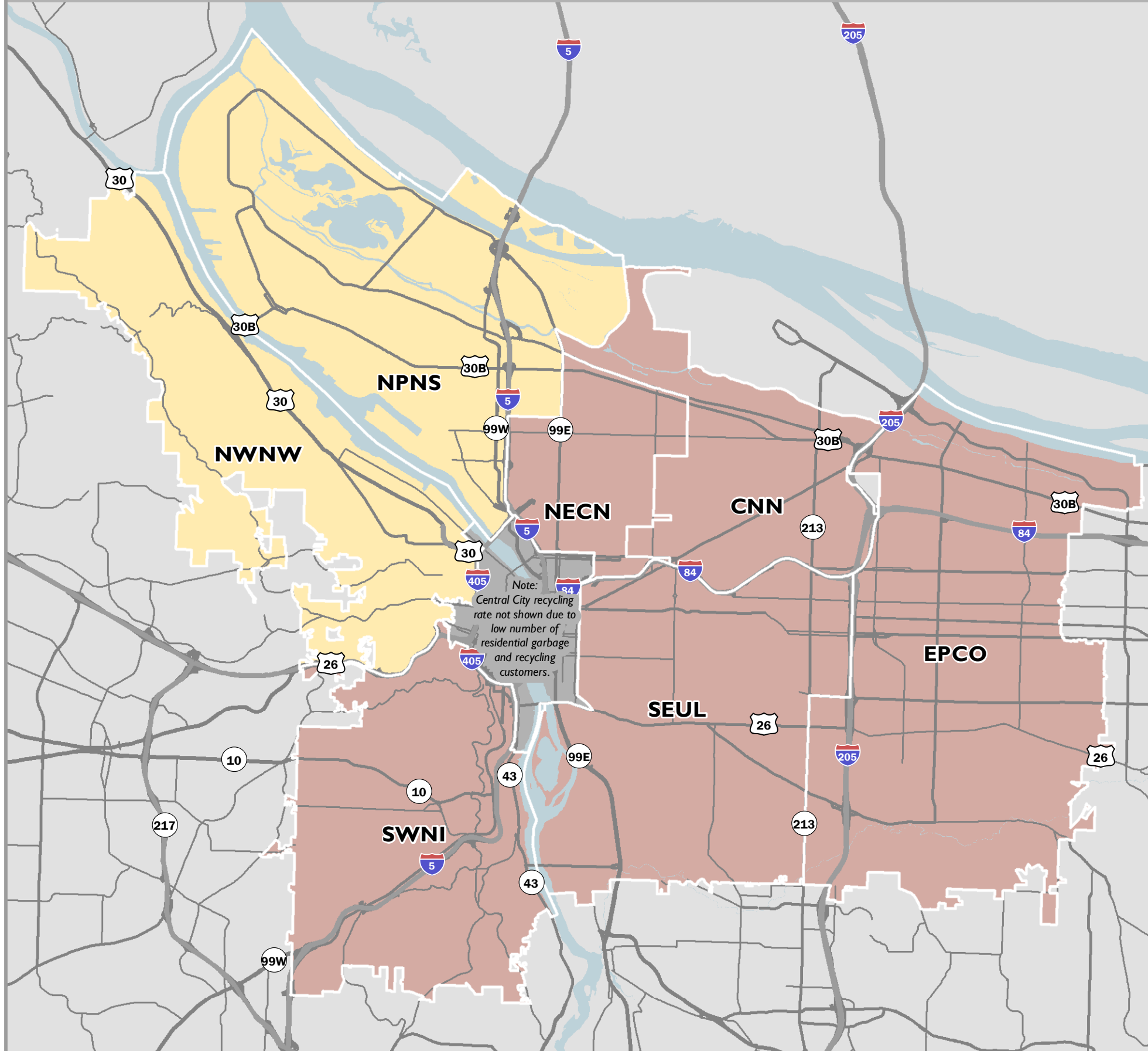


# RESIDENTIAL CURBSIDE RECOVERY RATE (recycling plus composting)

FY2018-19 PORTLAND BUREAU OF PLANNING & SUSTAINABILITY



Note:  
Central City recycling rate not shown due to low number of residential garbage and recycling customers.

## BUREAU NOTES

### Residential Curbside Recovery Rate

	Total Tons Collected	Total Tons Recovered	Recovery Rate (%)
CENT	NA	NA	NA
CNN	18,938	12,450	65.6%
EPCO	40,308	26,350	65.4%
NWNW	7,708	4,894	64.1%
NPNS	22,562	14,301	63.4%
NECN	21,428	13,894	64.8%
SEUL	56,725	37,099	65.4%
SWNI	24,670	16,095	65.7%
CITYWIDE	192,338	125,083	65.0%

Portland's Climate Action Plan set a goal to recover 90 percent of citywide waste by 2030. Portland businesses generate close to 80 percent of Portland's total waste, but the information is not reported geographically. In the residential sector, 11 garbage and recycling companies in Portland serve geographic areas that do not correspond to neighborhood boundaries, and in many cases companies serve multiple areas that are not contiguous.

This map shows the total material recycled and composted through Portland's residential curbside program, as a percentage of all material collected curbside, measured by weight. The curbside recovery rate is calculated for each residential garbage and recycling company using the tonnage they report collecting from their single family households and smallplex (2-4 units) customers. The estimated recovery rates for each neighborhood coalition are calculated by averaging the percent of each coalition served by a given garbage and recycling company by that company's overall recovery rate.

The curbside recovery rates on this map are calculated based only on materials collected curbside and do not take into account material recycled through the bottle bill, dropped off at depots, or other means. Thus the recovery rates shown on this map are different than the actual residential recovery rate calculated for the city. Compared to the national average recovery rate of 35%, all areas of Portland are doing very well.

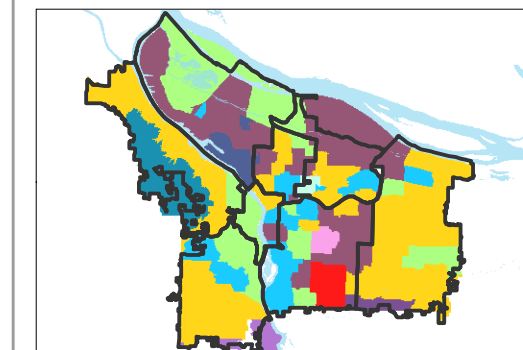
## LEGEND

### Percentage (%) of Total Residential Curbside Material Recovered, 2018-19

- 63.4% - 64.1%
- 64.2% - 66.2%

GIS Data Classification Method - Natural Breaks  
2 classes illustrate the consistency across the City Data Ranges by Coalition: 63.4% through 66.2%  
Source: Bureau of Planning and Sustainability

### Hauler Collection Areas



### Mapping Geographies

- CENT** - Central City
- CNN** - Central Northeast Neighborhood
- EPCO** - East Portland Community Office
- NECN** - Northeast Coalition of Neighborhoods
- NPNS** - North Portland Neighborhood Services
- NWNW** - Neighbors West/Northwest
- SEUL** - Southeast Uplift Neighborhood Coalition
- SWNI** - Southwest Neighbors, Inc.

The information on this map was derived from City of Portland GIS databases. Care was taken in the creation of this map but it is provided "as-is". The City of Portland cannot accept any responsibility for error, omissions, or positional accuracy, and therefore, there are no warranties which accompany this product. However, notification of any errors will be appreciated.

