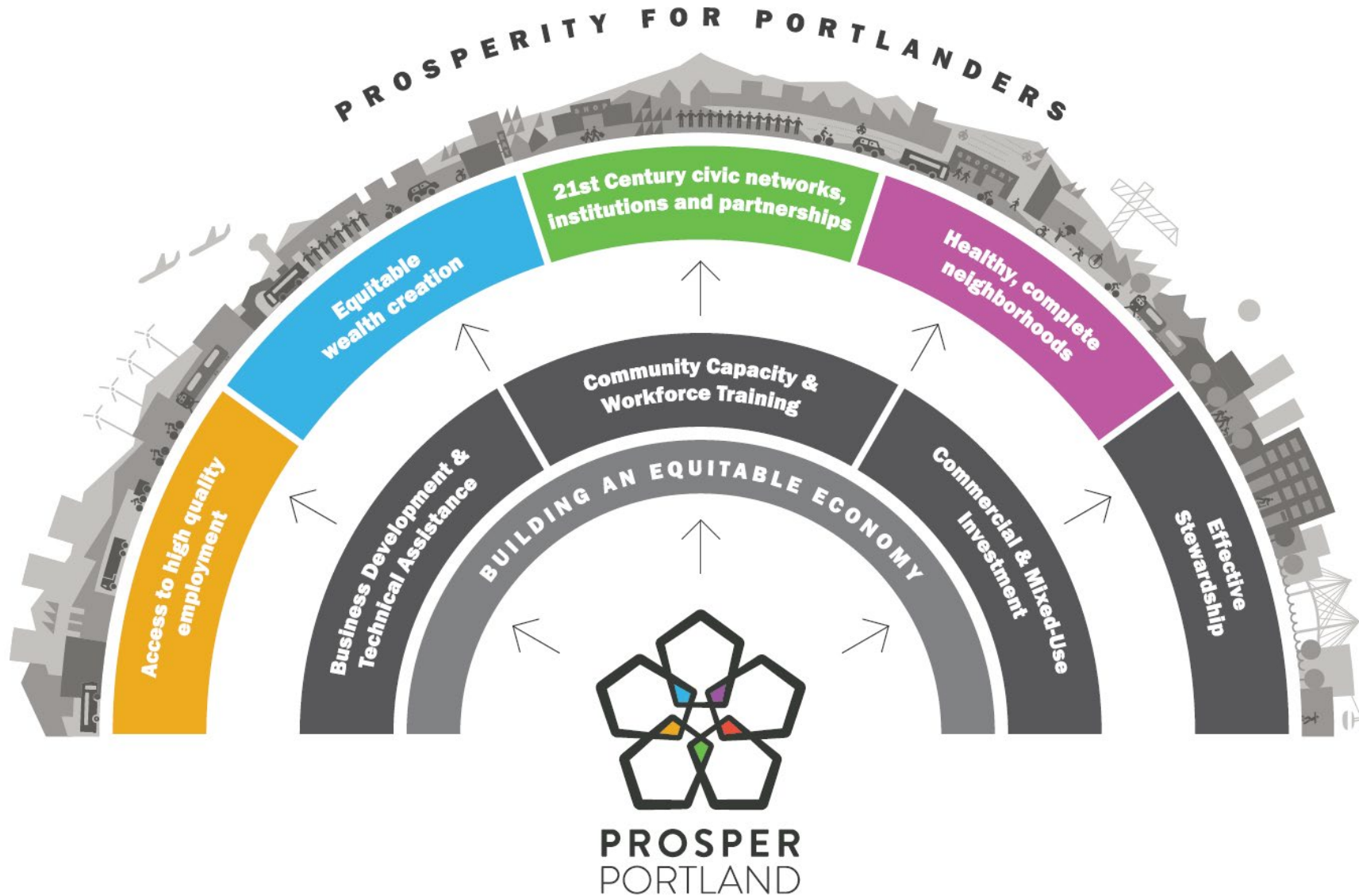


Prosper Portland Requested Budget FY2020-21

City Council Work Session - March 12, 2020



2020 Strategic Plan





Why Inclusive Economic Development?

+30%

revenue generated per employee for companies with inclusive talent practices

67%

of interns in the U.S. are offered employment after internship completion

142%

average a Portland-metro, traded sector worker earns per year compared to a local-sector worker

98%

of firms in Oregon are small businesses

50%

of workforce are employed at small businesses

#8

Highest income in U.S

3X

Poverty rates in Native American community vs. white communities

13X

Median net worth of white households vs. black households

47%

of Portland youth are people of color

12K

Businesses owned by BIPOC in Portland



Helping Businesses Thrive

Inclusive Business Resource Network & Traded Sector Business Development

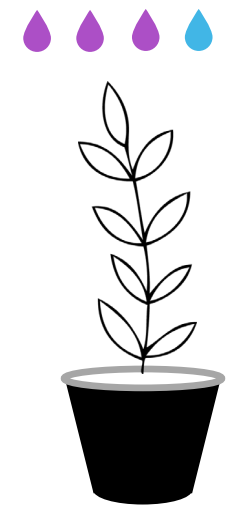


- Inclusive Business Resource Network
- Traded Sector Business Development
- Workforce Development
- Neighborhood Prosperity Network



**Micro/Startup/
Neighborhood**

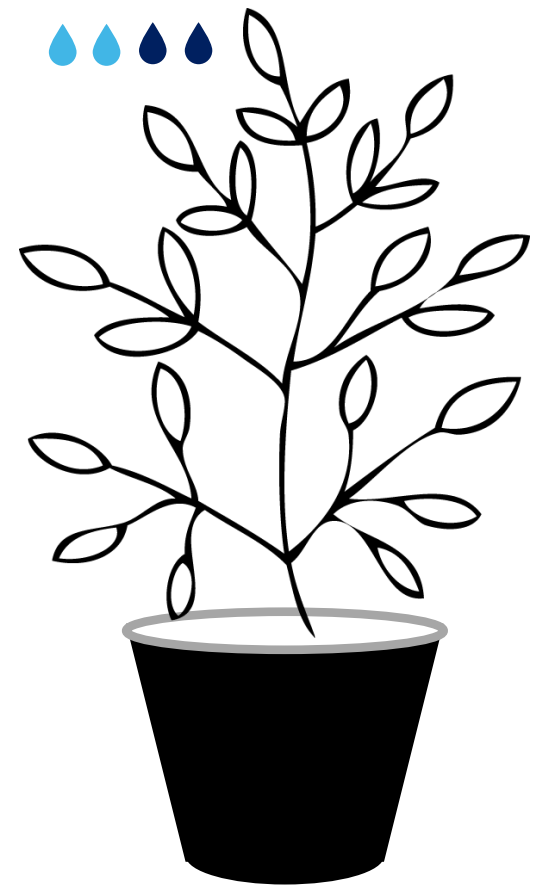
1-3 years of support



**Pre-Traded
Sector Growth**



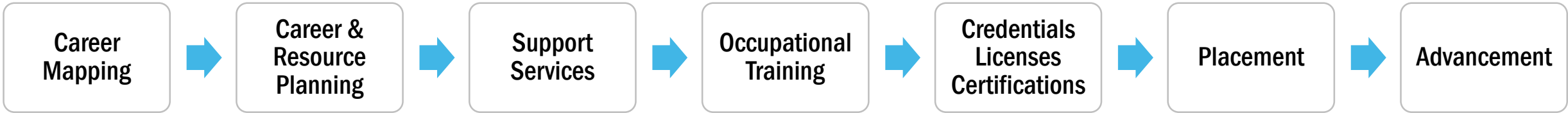
**Early Stage
Traded Sector**



**Large Scale or Established
Traded Sector**

Helping People Improve Skills & Advance in Careers

Adult & Youth Workforce Development Program

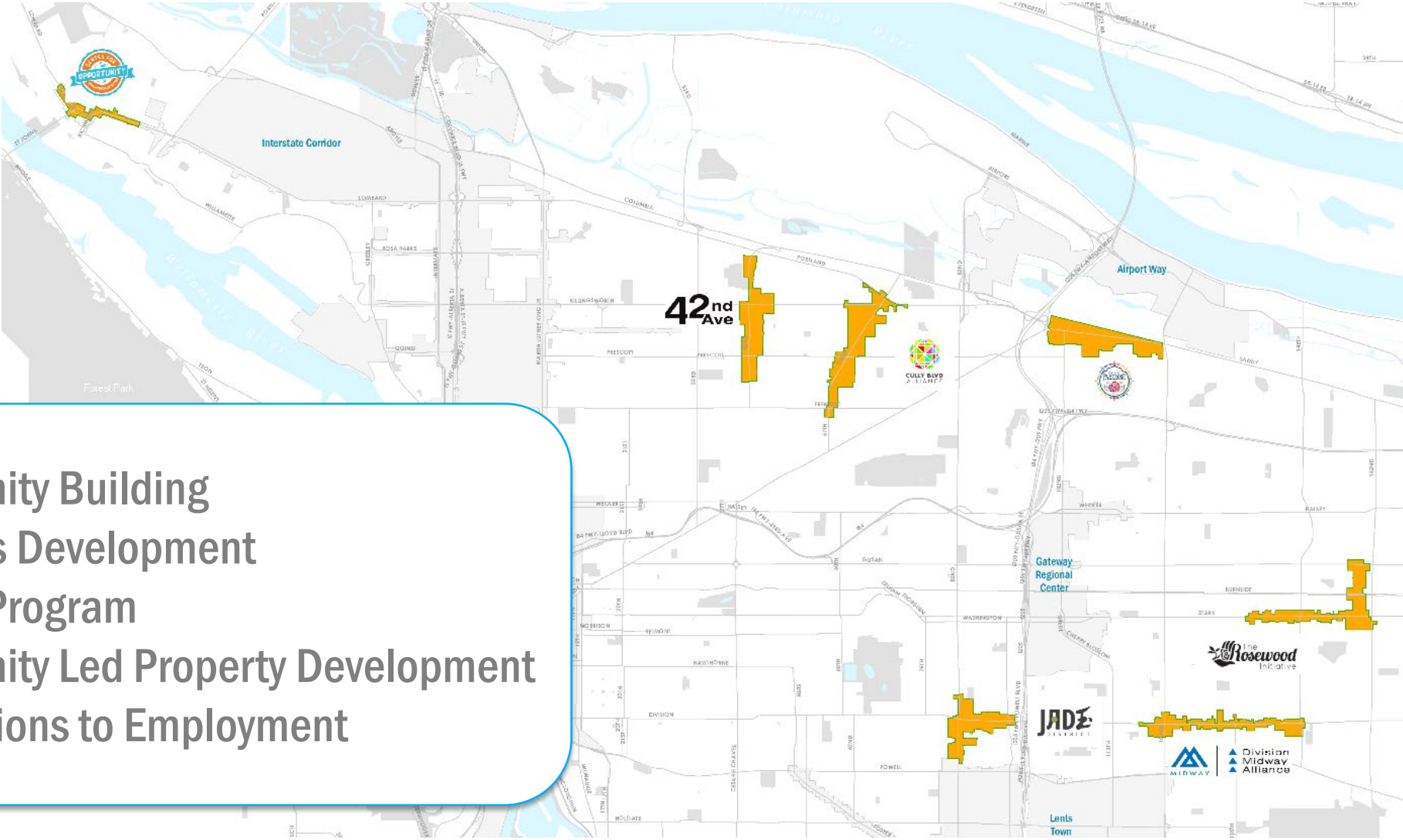


CAREER COACHING





Community-Driven, Equity-Centered Economic Development Neighborhood Prosperity Network

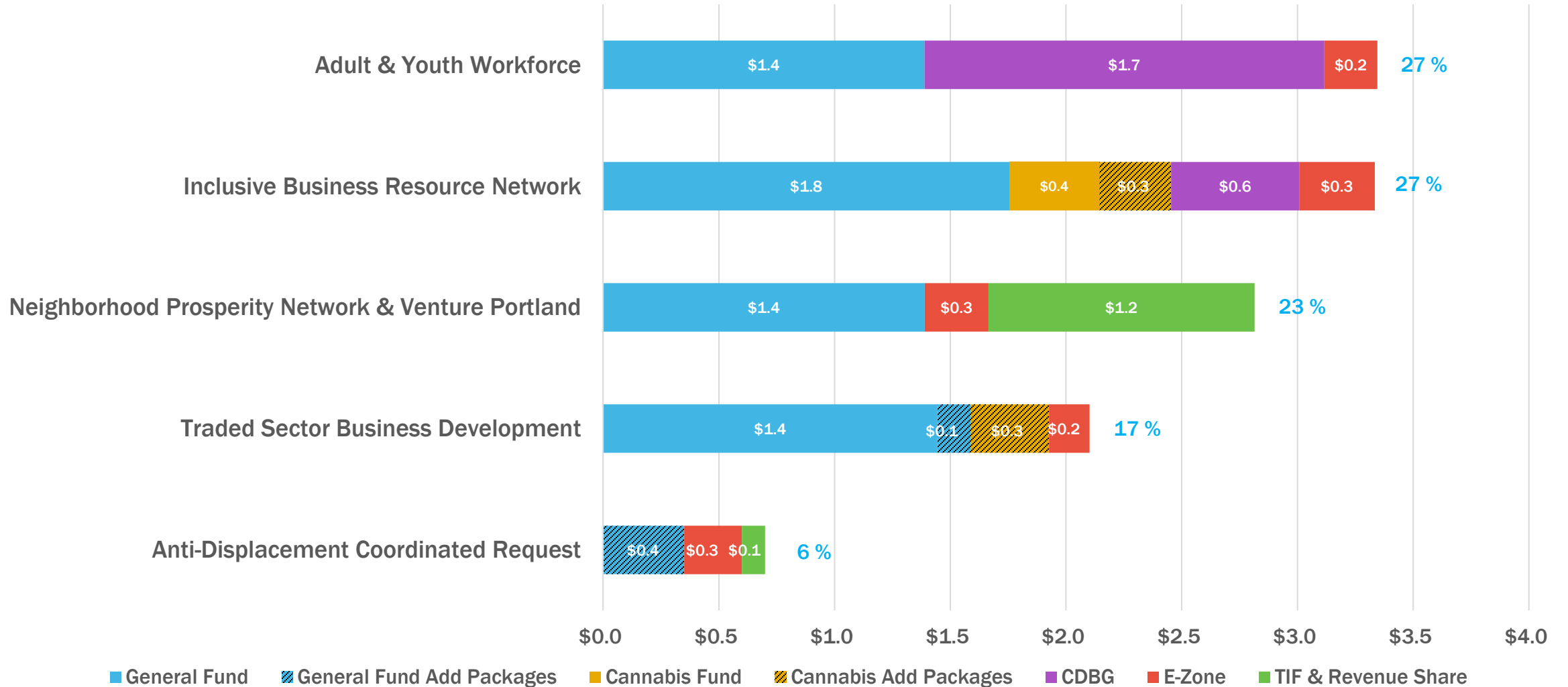


Community Building
Business Development
District Program
Community Led Property Development
Connections to Employment



Economic Development Programs

* Graph numbers are reflected in millions





Program Offer Anticipated Outcomes

TRADED SECTOR BUSINESS DEVELOPMENT

1,000

middle wage jobs
created from
expansions or
relocations

105

Increase in companies
participating in a Public
Benefit Agreement or public
pledge

INCLUSIVE BUSINESS RESOURCE NETWORK

850

businesses receiving
assistance

75%

businesses served
owned by People of Color

NEIGHBORHOOD PROSPERITY NETWORK

\$500K

leveraged

20

net businesses

30,000

volunteer hours

WORKFORCE DEVELOPMENT

2,000

participants served

60%

adults advance in employment

65%

participants are
People of Color

65%

youth advance in employment or
post-secondary training



Decision Packages

PORTLAND HARBOUR CLEANUP

\$364,600

One-time General Fund resources for half Prosper Portland’s FY 2020-21 share of citywide contribution to the Portland Harbor Restoration Trust Fund.

PORTLAND FILM OFFICE

\$142,000

1.00 FTE

One-time General Fund resources to continue operation of the Portland Film Office. In FY 20-21, PFO will initiate the centralized permitting function for filming in Portland.

COMMUNITY DEVELOPMENT MITIGATING DISPLACEMENT

\$350,000

Expands IBRN programming in East Portland to include retail navigation and maintains existing business TA services in NPN districts and the outer Division Corridor.

NEW CANNABIS ASKS IN FY 20/21

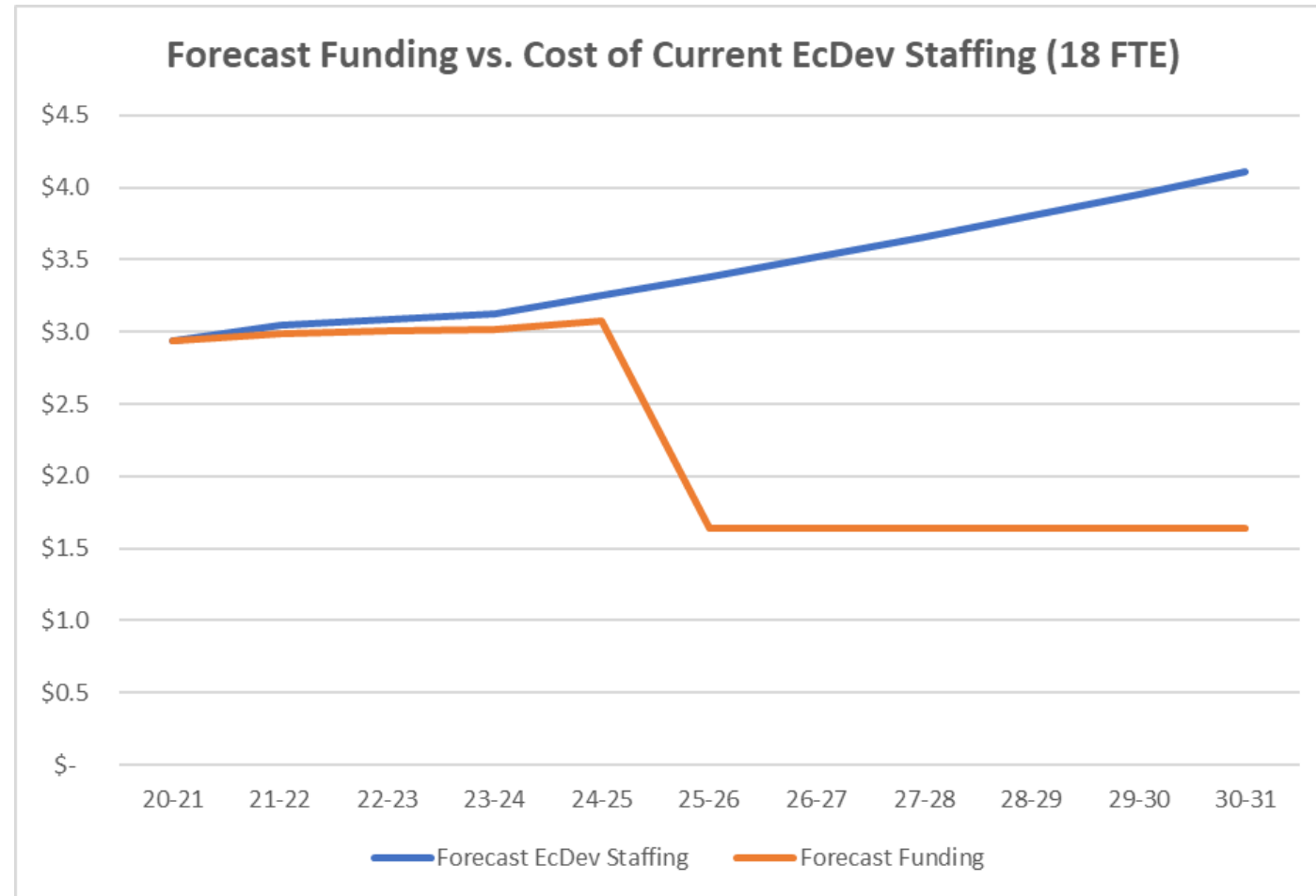
\$650,000

Supports BIPOC-focused programs: Cannabis Business Development Program, Mercatus, Portland Means Progress/Emerging Leaders Alignment, and other potential initiatives.

Key Risks & Notable Trends

- Economic slowdown >> Impact to businesses, hiring, E-Zone fund
- Uncertainty of Federal CDBG funding
- Increased personnel costs vs. forecast funding (TIF, General Fund)

2017 thru 2031	New Funding	No New Funding
WORKFORCE		
Total Participants	20,733	10,600
Participants of Color	13,975	6,748
BUSINESSES		
BUS. OF COLOR	5,471	2,014
	3,718	1,262
Ec Dev Staff	22	8



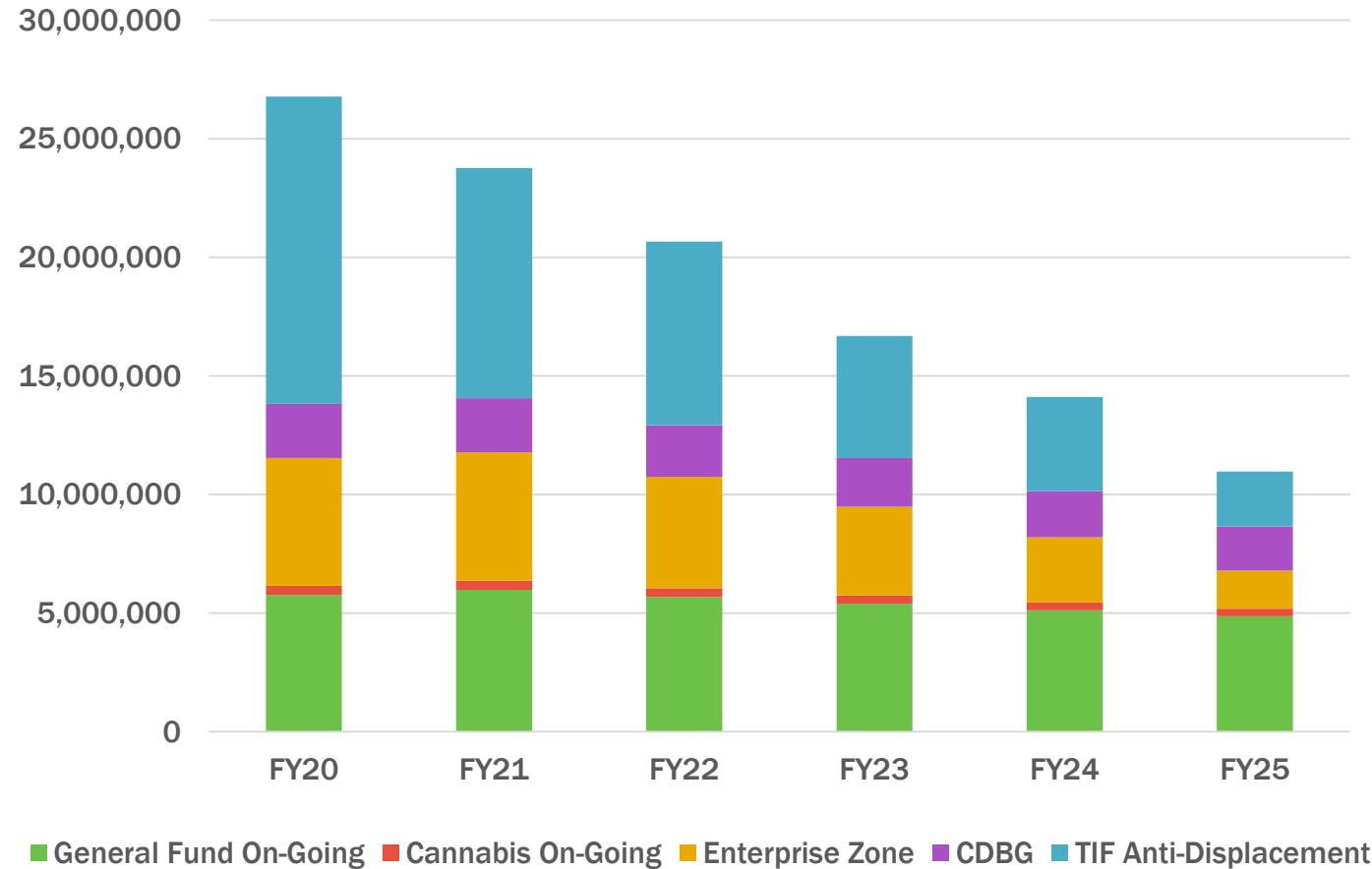
Questions



Key Risks & Notable Trends

- **Economic slowdown >> Impact to businesses, hiring, E-Zone fund**
- **Annual increase of staffing costs**
- **Uncertainty of CDBG funding**
- **TIF Cliff**

Anti-Displacement Resources

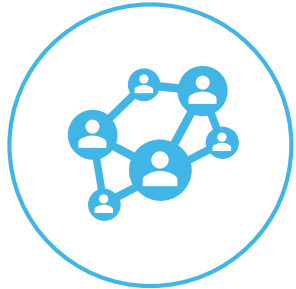




What companies, startups & small business need to thrive.



**Access to
Business
Know-How**



**Access to
New Markets**



**Access to
Capital**



**Access to
Talented,
Diverse
Workforce**

Economic Development Programs



Grow People

Help people improve their skills and advance their careers



Grow Business

Strengthen businesses and increase access to inclusive business support services



Grow Neighborhoods

Build community capacity through social equity-based economic development at the neighborhood level