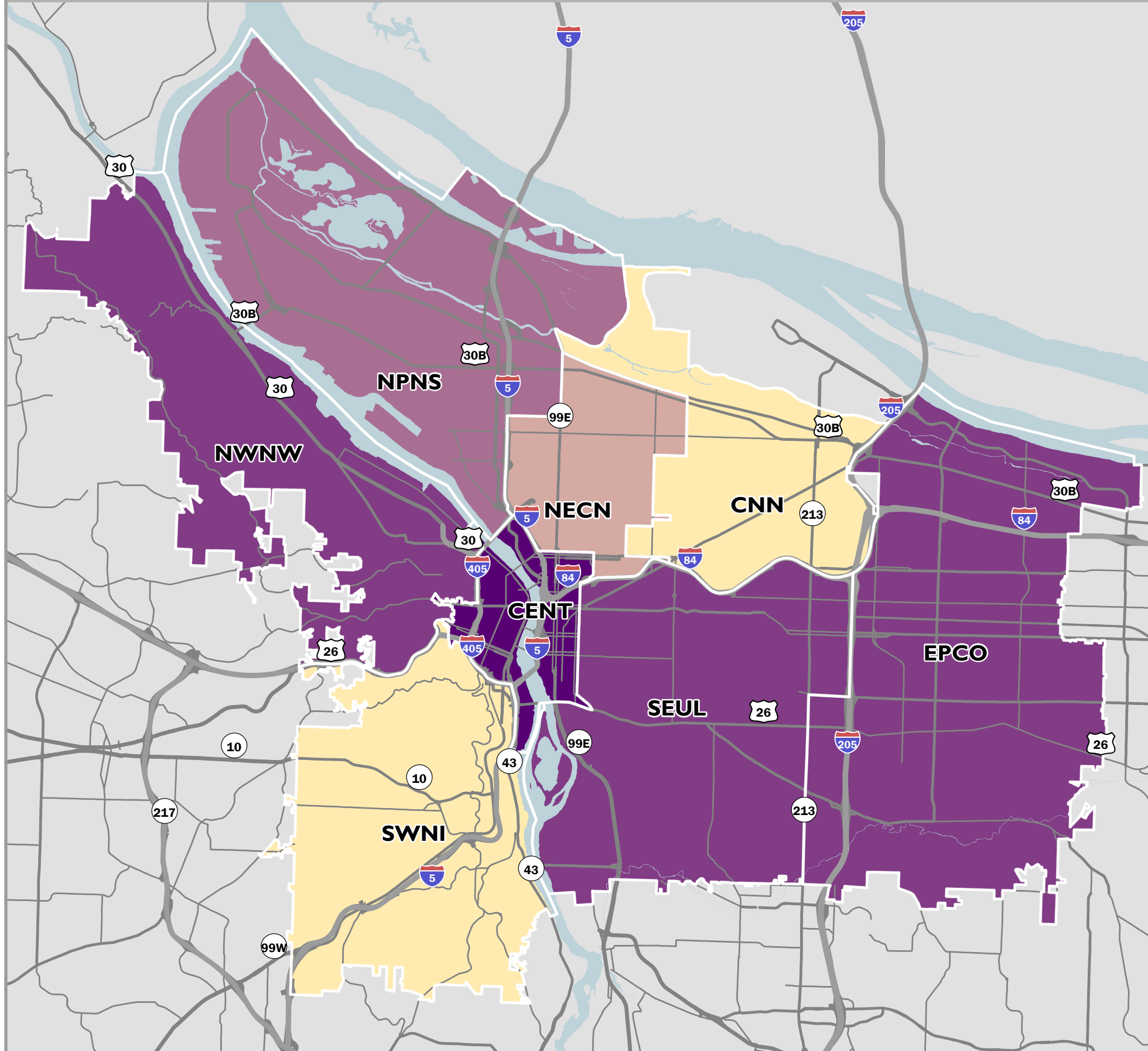


NEW RESIDENTIAL DWELLING UNITS

FY2019-20 PORTLAND BUREAU OF PLANNING & SUSTAINABILITY



BUREAU NOTES

New Residential Units

	New Residential Permits	New Units Created	Percent (%) of Total Permits
CENT	8	1,096	28%
CNN	72	188	5%
EPCO	166	569	14%
NWNW	26	554	14%
NPNS	139	532	13%
NECN	101	314	8%
SEUL	293	602	15%
SWNI	57	127	3%
CITYWIDE	862	3,982	100%

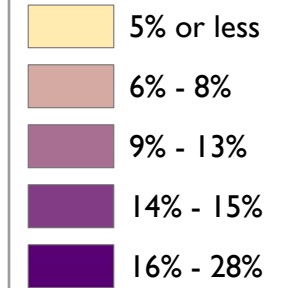
Building permits for 3,982 residential dwelling units were issued in FY2019-20, which is a significant decline from previous years. The decline is primarily due to the disruption caused by the COVID-19 pandemic citywide.

Two-thirds of the permit activity (2,566 units) is located in the Central City and the close-in inner neighborhoods of NWNW, NECN and SEUL – consistent with previous years and reflecting strong market demand for housing in walkable neighborhoods with a wide range of amenities that are close to Central City jobs. The high levels of development activity also correspond to the neighborhoods with the highest scores for being a Healthy, Connected Neighborhood.

The SWNI (127 units) and CNN (188 units) saw the lowest level of development activity. EPCO also saw a relatively low level of development activity compared to their share of Portland households. The Central City (CENT) and Northwest (NWNW) neighborhoods saw development activity levels that exceeded their share of Portland households.

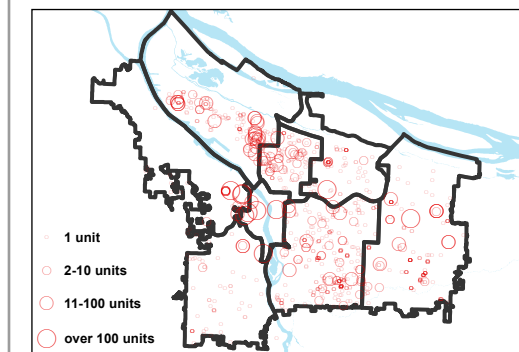
LEGEND

Percentage (%) of Total Residential Units Created



GIS Data Classification Method - Natural Breaks
Data Ranges by Coalition: 3.2% through 27.5%
Source: Bureau of Development Services;
prepared by Bureau of Planning and Sustainability

Residential Permits by Number of Units



Mapping Geographies

- CENT** - Central City
- CNN** - Central Northeast Neighborhood
- EPCO** - East Portland Community Office
- NECN** - Northeast Coalition of Neighborhoods
- NPNS** - North Portland Neighborhood Services
- NWNW** - Neighbors West/Northwest
- SEUL** - Southeast Uplift Neighborhood Coalition
- SWNI** - Southwest Neighbors, Inc.

The information on this map was derived from City of Portland GIS databases. Care was taken in the creation of this map but it is provided "as-is". The City of Portland cannot accept any responsibility for error, omissions, or positional accuracy, and therefore, there are no warranties which accompany this product. However, notification of any errors will be appreciated.

