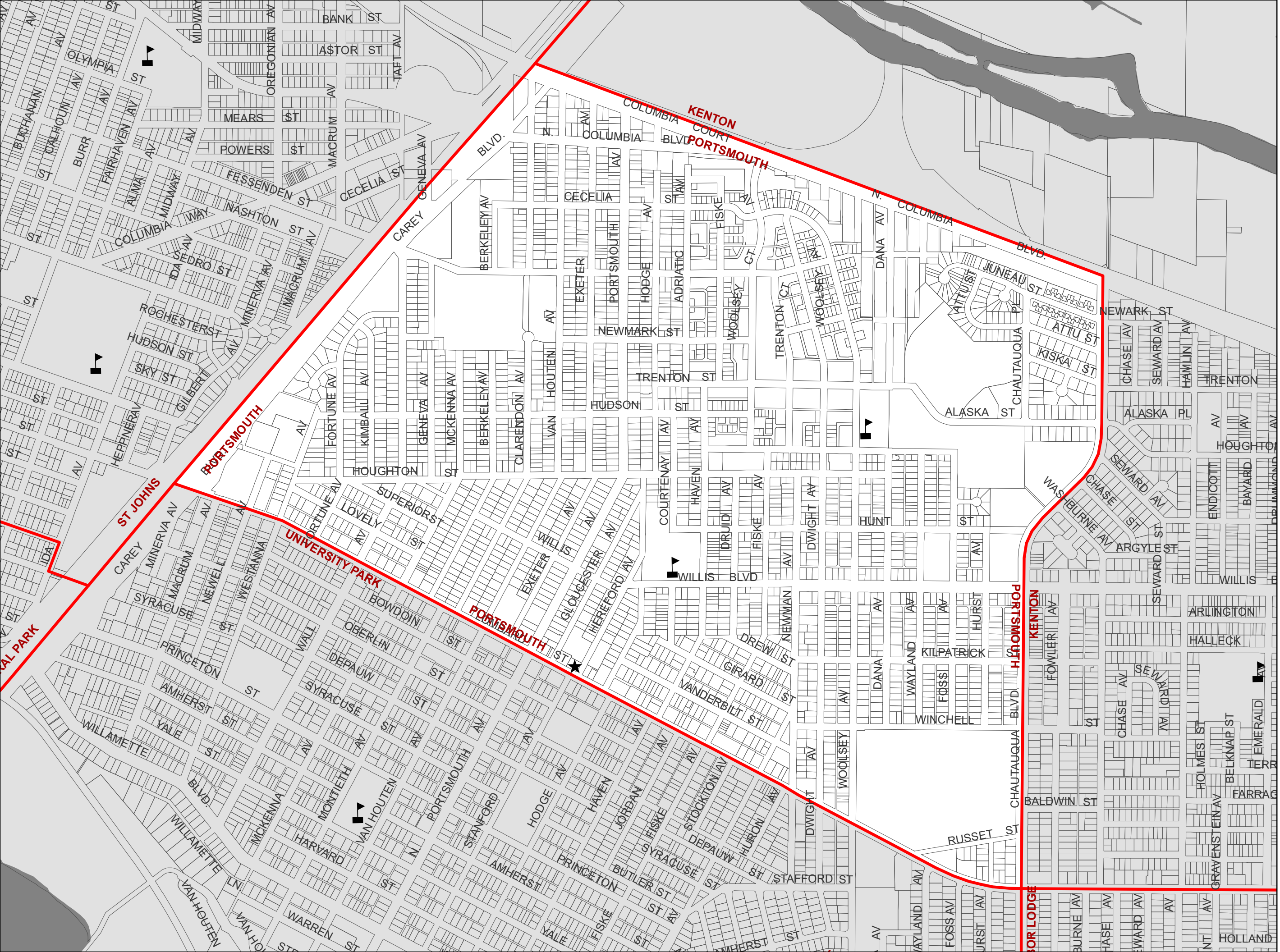


# Portsmouth



- Neighborhood Boundary
- Overlapping Boundary
- Fire Stations
- Schools
- City Boundary



INFORMATION SOURCES:

Taxlots: Originally produced by Oregon Dept. of Revenue. Modified and updated by Multnomah County Assessment & Taxation and Portland Dept. of Transportation. Updated weekly by City of Portland. Accuracy +/- .1 feet.

Neighborhood Association Boundaries: Originally digitized by Portland Department of Transportation. Updated by Bureau of Planning and Sustainability for the Office of Community & Civic Life, December 2018. Registered to taxlot base maps.

All data compiled from source materials at different scales. For more detail, please refer to the source materials or City of Portland, Bureau of Planning & Sustainability.

The information on this map was derived from City of Portland GIS databases. Care was taken in the creation of this map but it is provided "as is". The City of Portland cannot accept any responsibility for error, omissions, or positional accuracy, and therefore, there are no warranties which accompany this product. However, notification of any errors will be appreciated.

March 5, 2019  
Scale 1:8,700