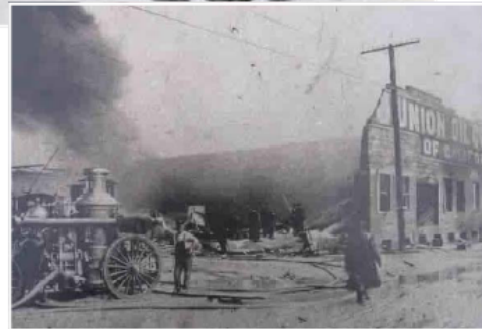
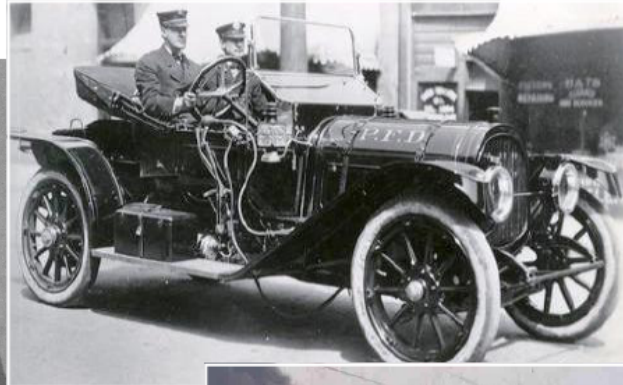


*You are Cordially Invited*

# Wine & Cheese Reception

*Campbell Memorial Design Unveiling*




Chief David Campbell  
1881-1911

Please join the Campbell Board of Trustees, Portland Fire & Rescue, and Portland State University's Department of Architecture for the unveiling of designs submitted for the Campbell Memorial Design Competition.

Located at the east end of the Hawthorne Bridge, the Campbell Memorial will be a lasting tribute to honor Portland firefighters' bravery and sacrifice in the line of duty. Come support our local architecture community's dedication to this project and vote for your favorite design.

**What:** A Wine & Cheese Reception  
**Where:** Portland State University,  
Shattuck Hall, SW Broadway / Hall Streets  
2nd Floor  
**When:** Monday, October 19<sup>th</sup>  
5:30 to 8:30 pm



 Portland State  
UNIVERSITY

For more information, visit [www.portlandfirefightersmemorial.org](http://www.portlandfirefightersmemorial.org)