



JUNE 3, 2013

CITY OF PORTLAND
DRAFT Facility Report
Fire and Rescue

Intentionally Left Blank

INTERNAL REVIEW DRAFT

Facilities

Station 01 - Skidmore (F&R-01)

55 SW Ash Street Portland Oregon

Station 09 - Hawthorne District (F&R-09)

1706 SE Cesar E Chavez Blvd Portland Oregon

Station 12 - Sandy Blvd. (F&R-12)

8645 NE Sandy Boulevard Portland Oregon

Station 16 - Sylvan (F&R-16)

1715 SW Skyline Boulevard Portland Oregon

Station 18 - Multnomah Village (F&R-17)

8720 SW 30th Avenue Portland Oregon

Station 27 - Forest Heights (F&R-26)

3130 NW Skyline Boulevard Portland Oregon

Belmont Learning Center (F&R-31)

900 SE 35th Ave Portland Oregon

FMO (F&R-36)

1280 SE Gideon St Portland Oregon

INTERNAL REVIEW DRAFT

Intentionally Left Blank

INTERNAL REVIEW DRAFT

Intentionally Left Blank

INTERNAL REVIEW DRAFT

Exterior		Priority:
1 - 1	Parking Area	Priority:
Provide an accessible path of travel		\$0
Notes: When cars are parked along the southern edge of the parking lot, the access aisle is potentially blocked. Accessible space is required to go behind cars to access the building.		
State: ---, 1106.7.1		
Federal: 502.3, 502.7		
Provide or modify accessible spaces		\$85
Notes: The accessible parking space is not the one closest to the accessible entrance. Access aisle striping on outside edge is 2' shorter than the parking space markings.		
State: 1106.6, 1106.7.2		
Federal: 208.3.1, 502.3.2		
Install sign		\$250
Notes: Sign is mounted 28-1/4" above parking surface (60" min.). Blue and white ISA sign. Required: A "Reserved Parking" sign, 12" wide by 18" high on a white background, with a green legend, and a white ISA on blue symbol, all retroreflective.		
State: 1106.7.2		
Federal: 502.6, 703.7.2.1		
Provide or modify accessible access aisles		\$250
Notes: Bench located in the access aisle reduces access aisle width to 7'6" (8' min. for van access aisle).		
State: 1106.7.1		
Federal: 502.3.1		
Install van parking sign		\$250
Notes: Blue and white van accessible sign provided. Required: A "Van Accessible" sign that is 18" wide by 9" high on a white retroreflective background and green retroreflective lettering is provided at each van accessible space.		
State: 1106.5		
Federal: 208.2.4, 502.6		

INTERNAL REVIEW DRAFT

Floor 1		
8 - 1	Door/Gate	Priority:
Adjust door closer		\$75
Notes: Operating effort is 7 lbs (5 lbs max.)		
State: 1101.2.2.5		
Federal: 404.2.9		
8 - 2	Door/Gate	Priority:
Adjust door closer		\$75
Notes: Sweep time of door is 2 seconds (5 seconds min.)		
State: ---		
Federal: 404.2.8.1		
8 - 3	Door/Gate	Priority:
Adjust door closer		\$75
Notes: Operating effort is 11 lbs (5 lbs max.)		
State: 1101.2.2.5		
Federal: 404.2.9		
8 - 4	Door/Gate	Priority:
Adjust door closer		\$75
Notes: Operating effort is 15 lbs (5 lbs max.) Sweep time is 2 seconds (5 seconds min.)		
State: ---, 1101.2.2.5		
Federal: 404.2.8.1, 404.2.9		
Provide or modify door kickplate		\$100
Notes: Door stop is mounted in the kickplate.		
State: ---		
Federal: 404.2.10		
8 - 5	Door/Gate	Priority:
Adjust door closer		\$75
Notes: Operating effort is 8 lbs (5 lbs max.)		
State: 1101.2.2.5		
Federal: 404.2.9		

INTERNAL REVIEW DRAFT

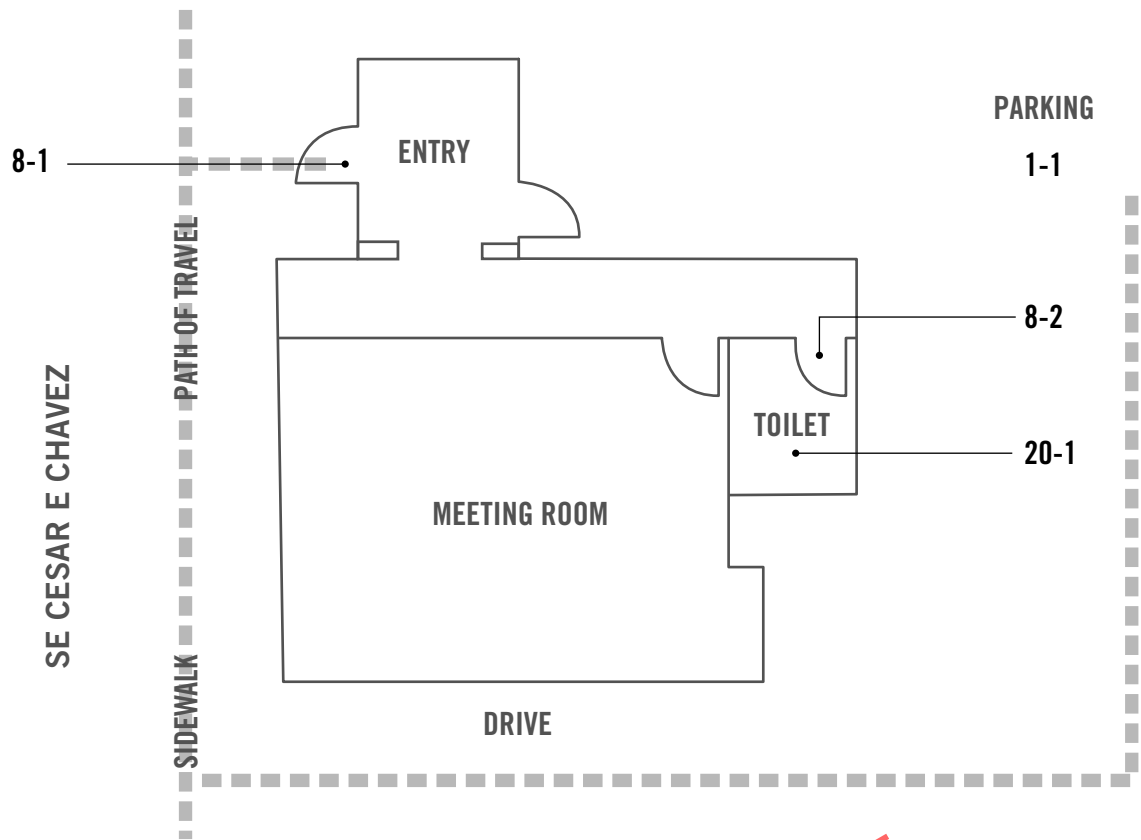
Floor 1		
8 - 6	Door/Gate	Priority:
Adjust door closer		\$75
Notes: Operating effort is 8 lbs (5 lbs max.)		
State: 1101.2.2.5		
Federal: 404.2.9		
Modify door window or side light		\$500
Notes: Window in door is located 48-3/4" AFF (43" max.)		
State: ---		
Federal: 404.2.11		
8 - 7	Door/Gate	Priority:
Adjust door closer		\$75
Notes: Operating effort is 8 lbs (5 lbs max.)		
State: 1101.2.2.5		
Federal: 404.2.9		
8 - 8	Door/Gate	Priority:
Adjust door closer		\$75
Notes: Operating effort is 10 lbs (5 lbs max.)		
State: 1101.2.2.5		
Federal: 404.2.9		
20 - 1	Single User Restroom	Priority:
Replace or modify grab bars		\$250
Notes: Grab bars are mounted 36-3/4" AFF (33-36" req.)		
State: ---		
Federal: 609.4		
20 - 2	Single User Restroom	Priority:
Replace or modify grab bars		\$250
Notes: Grab bars are mounted 37" AFF (33-36" req.)		
State: ---		
Federal: 609.4		

INTERNAL REVIEW DRAFT

Intentionally Left Blank

INTERNAL REVIEW DRAFT

F&R-09: STATION 9 - HAWTHORNE DISTRICT
1706 SE SE CESAR E CHAVEZ BLVD., PORTLAND OR



INTERNAL REVIEW DRAFT

Intentionally Left Blank

INTERNAL REVIEW DRAFT

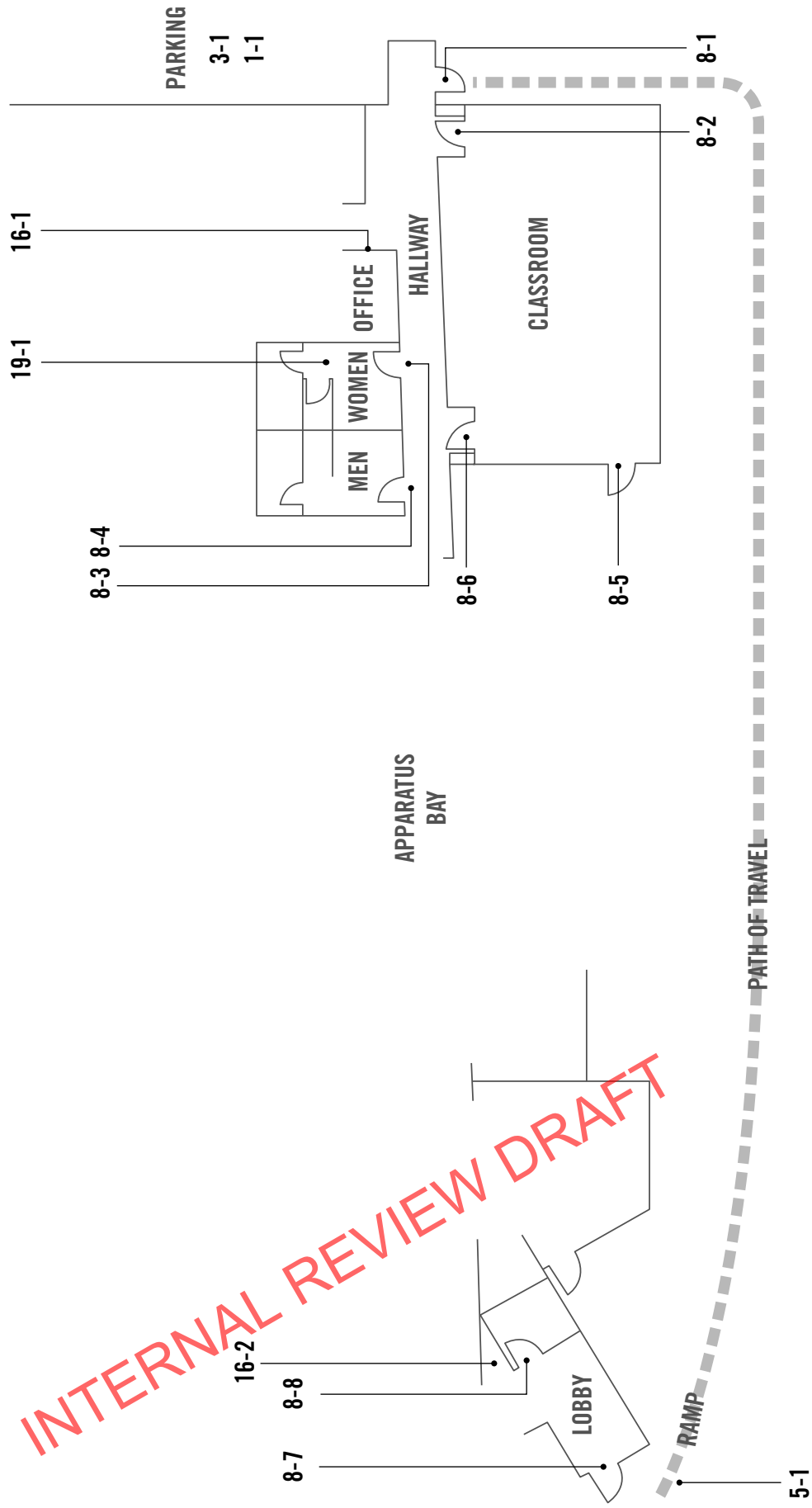
Exterior		
1 - 1	Parking Area	Priority:
Provide or modify accessible spaces		\$85
Notes: A yellow ISA pavement stencil with 2-1/4" to 3-3/4" stroke. Required: white retroreflective paint with 3" stroke at a min. size 24" wide by 28" in height. Parking space is marked with 3-1/4" stripes (4" req.). Van parking required - space 8'5" (9' req.).		
State: 1106.6, 1106.7.1, 1106.7.2		
Federal: ---, 502.2, 502.6		
Provide or modify accessible access aisles		\$210
Notes: Van access aisle is 7'8" (8' req.).		
State: 1106.7.1		
Federal: 502.3.1		
Install sign		\$250
Notes: No signs designating accessible parking spaces is provided.		
State: 1106.7.2		
Federal: 502.6, 703.7.2.1		
Install van parking sign		\$250
Notes: No van accessible sign provided. Required when only one accessible parking space is required.		
State: 1106.5		
Federal: 208.2.4, 502.6		

INTERNAL REVIEW DRAFT

Floor 1		
8 - 1	Door/Gate	Priority:
Provide sign(s) indicating accessible entries and facilities		\$250
Notes: Primary accessible entrance is not marked with the International Symbol of Accessibility.		
State: ---		
Federal: 216.6		
Adjust door closer		\$75
Notes: Exterior door operating effort is 10 lbs (8.5 lbs max.)		
State: 1101.2.2.5		
Federal: 404.2.9		
Install or modify permanent room signs		\$125
Notes: Tactile and Braille EXIT sign is not provided.		
State: ---		
Federal: 703.4.1		
8 - 2	Door/Gate	Priority:
Provide additional strike edge clearance		\$3,000
Notes: Strike edge clearance on the pull side of the door is 17" (18" min.)		
State: ---		
Federal: 404.2.4.1		
20 - 1	Single User Restroom	Priority:
Install sign		\$250
Notes: Restroom sign is located 46-1/2" AFF (60" req.)		
State: ---		
Federal: 703, 703.4.1, 703.4.2		

INTERNAL REVIEW DRAFT

F&R-12: STATION 12 - SANDY BLVD
8645 NE SANDY BLVD., PORTLAND OR



Intentionally Left Blank

INTERNAL REVIEW DRAFT

Exterior		
1 - 1	Parking Area	Priority:
Install sign		\$250
Notes: White on blue ISA sign. Required: No 'Reserved Parking' sign on white retroreflective background, with green retroreflective legend, and a white ISA symbol on blue retroreflective symbol.		
State: 1106.7.2		
Federal: 502.6, 703.7.2.1		
Install van parking sign		\$250
Notes: A separate Van Accessible sign is not provided.		
State: 1106.5		
Federal: 208.2.4, 502.6		
Regrade surface		\$5,202
Notes: Slope of parking and access aisle 2.3% to 2.5% (2% max.)		
State: ---		
Federal: 502.4, 504.4		
3 - 1	Curb Ramp	Priority:
Install, replace or modify curb ramp		\$2,460
Notes: Slope of curb ramp is 8.7% (8.33% max.) Cross slope is 2.5% (2% max.)		
State: ---		
Federal: 405.2, 405.3, 406.1		
Provide level landing		\$153
Notes: Level landing provided at the top of the curb ramp is 2.2% (2% max.)		
State: ---		
Federal: 406.4, 406.7		
5 - 1	Ramp	Priority:
Provide level landing		\$340
Notes: Bottom landing slope ranges from 4.2-4.6% (2% max.)		
State: ---		
Federal: 302, 405.7.1		

INTERNAL REVIEW DRAFT

Floor 1		
8 - 1	Door/Gate	Priority:
Provide sign(s) indicating accessible entries and facilities		\$250
Notes: Primary entrance does not have International Symbol of Accessibility.		
State: ---		
Federal: 216.6		
Adjust door closer		\$75
Notes: Exterior door operating effort is 12.5 lbs. (8.5 lbs. max.).		
State: 1101.2.2.5		
Federal: 404.2.9		
Provide additional strike edge clearance		\$3,000
Notes: Strike edge clearance on the pull side of the door is 15" (18" min.)		
State: ---		
Federal: 404.2.4.1		
Install or modify permanent room signs		\$125
Notes: Tactile and Braille EXIT sign is not provided.		
State: ---		
Federal: 703.4.1		
8 - 2	Door/Gate	Priority:
Modify door window or side light		\$500
Notes: Window in door is located at 53-3/4" AFF (43" max.)		
State: ---		
Federal: 404.2.11		
Provide additional strike edge clearance		\$3,000
Notes: Strike edge clearance on the pull side of the door is 16-3/4" (18" min.)		
State: ---		
Federal: 404.2.4.1		
Install or modify permanent room signs		\$125
Notes: Tactile and Braille EXIT sign is not provided.		
State: ---		
Federal: 703.4.1		
8 - 3	Door/Gate	Priority:
Adjust door closer		\$75
Notes: Operating effort for the women's restroom door is 14 lbs (5 lbs max.)		
State: 1101.2.2.5		
Federal: 404.2.9		

INTERNAL REVIEW DRAFT

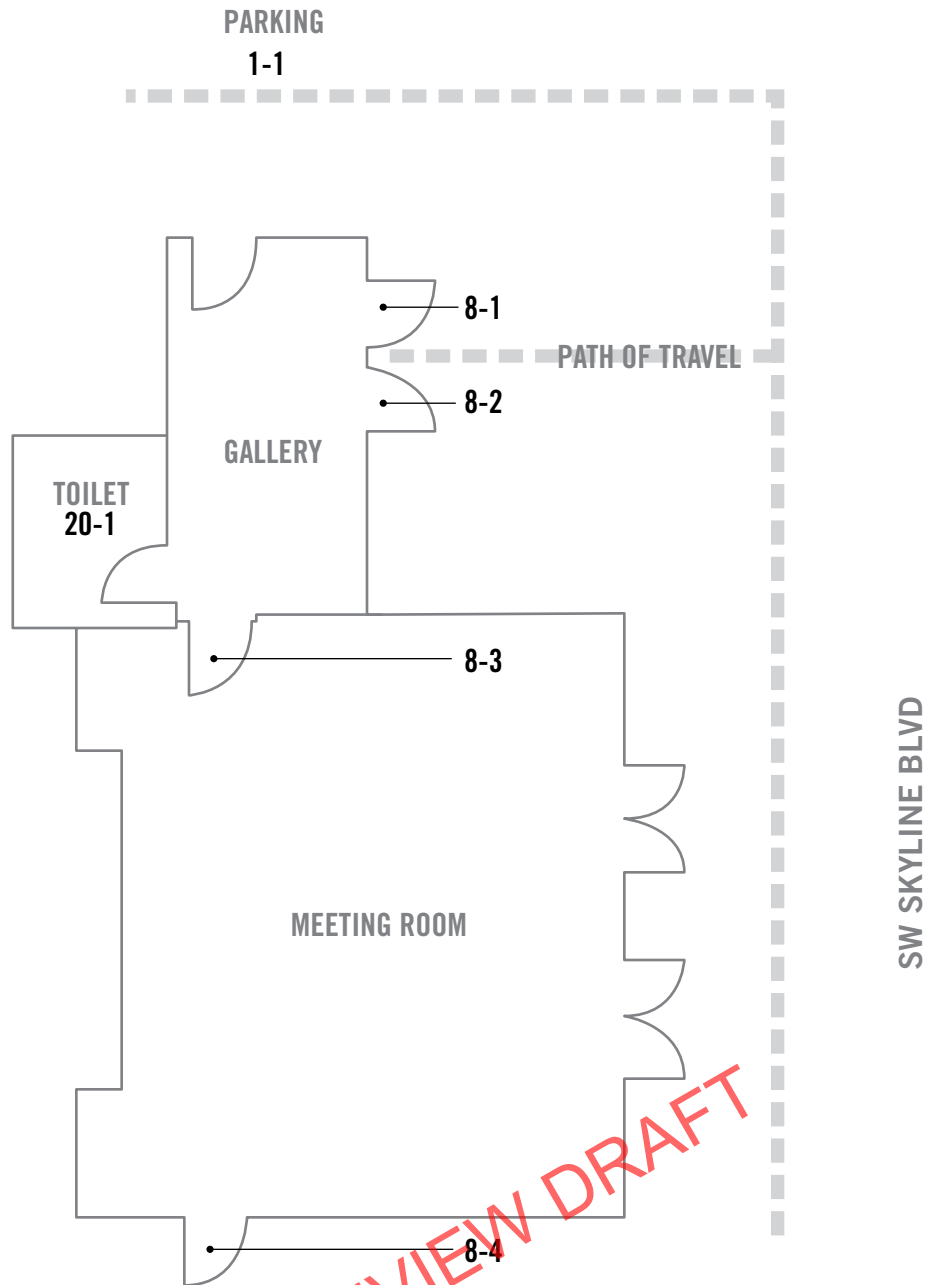
Floor 1		
8 - 4	Door/Gate	Priority:
Adjust door closer		\$75
Notes: Operating effort for the men's restroom door is 13 lbs (5 lbs max.)		
State: 1101.2.2.5		
Federal: 404.2.9		
8 - 5	Door/Gate	Priority:
Adjust door closer		\$75
Notes: Exterior door operating effort is 13 lbs. (8.5 lbs max.)		
State: 1101.2.2.5		
Federal: 404.2.9		
Install or modify permanent room signs		\$125
Notes: Tactile and Braille EXIT sign is not provided.		
State: ---		
Federal: 703.4.1		
8 - 6	Door/Gate	Priority:
Modify door window or side light		\$500
Notes: Window in door is located at 54-3/4" AFF (43" max.)		
State: ---		
Federal: 404.2.11		
8 - 7	Door/Gate	Priority:
Provide sign(s) indicating accessible entries and facilities		\$250
Notes: Primary accessible entrance is not marked by the International Symbol of Accessibility.		
State: ---		
Federal: 216.6		
Adjust door closer		\$75
Notes: Exterior door operating effort is 12 lbs (8.5 lbs max.) Sweep time is 2 seconds (5 seconds min.)		
State: ---, 1101.2.2.5		
Federal: 404.2.8.1, 404.2.9		
Regrade surface		\$340
Notes: Slope ranges from 4.2-4.6% on the swing side of the door. (2% max.)		
State: ---		
Federal: 404.2.4.4		

INTERNAL REVIEW DRAFT

Floor 1		
8 - 8	Door/Gate	Priority:
Adjust door closer		\$75
Notes: Operating effort is 17 lbs (5 lbs max.)		
State: 1101.2.2.5		
Federal: 404.2.9		
16 - 1	Built-in Elements	Priority:
Provide an accessible counter		\$2,500
Notes: Counter height is 39-1/4" (36" max.)		
State: ---		
Federal: 904.4		
16 - 2	Built-in Elements	Priority:
Provide an accessible counter		\$2,500
Notes: Counter height is 42" (36" max.)		
State: ---		
Federal: 904.4		
19 - 1	Multiple User Restroom	Priority:
Modify lavatory or counter clearances		\$0
Notes: Knee space and toe clearance are not provided due to removable metal rod under the lavatory of the women's restroom.		
State: ---		
Federal: 306.2, 306.2.3, 306.3, 306.3.3		
Provide or replace compartment door hardware		\$250
Notes: U-shaped handles are not provided on the front and back of the compartment door. Strike edge clearance on the pull side of the door is 8-1/2" (18" min.)		
State: ---		
Federal: 309.4, 404.2.7		

INTERNAL REVIEW DRAFT

F&R-16: STATION 16 - SYLVAN
1715 SW SKYLINE BLVD., PORTLAND OR



INTERNAL REVIEW DRAFT

Intentionally Left Blank

INTERNAL REVIEW DRAFT

Exterior		Priority:
1 - 1	Parking Area	Priority:
Provide or modify accessible spaces		\$85
Notes: Pavement ISA stencil with 2-1/4" to 4" stroke (3" min.)		
State: 1106.6, 1106.7.1, 1106.7.2		
Federal: ---, 502.2, 502.6		
Install van parking sign		\$250
Notes: No van accessible sign provided. Required when only one accessible parking space is required.		
State: 1106.5		
Federal: 208.2.4, 502.6		
Regrade surface		\$1,836
Notes: Access aisle slope is 2.2% (2% max.)		
State: ---		
Federal: 502.4, 504.4		
Install sign		\$250
Notes: Sign is white ISA on blue background. Required: "Reserved Parking" sign on a white retroreflective background 12" wide by 18" high, with a green retroreflective legend, and a white ISA symbol on blue retroreflective symbol.		
State: 1106.7.2		
Federal: 502.6, 703.7.2.1		

INTERNAL REVIEW DRAFT

Floor 1		
8 - 1	Door/Gate	Priority:
Provide sign(s) indicating accessible entries and facilities		\$250
Notes: Primary entrance is not identified with International Symbol of Accessibility.		
State: ---		
Federal: 216.6		
Install or modify permanent room signs		\$125
Notes: The door has no tactile and Braille EXIT sign.		
State: ---		
Federal: 703.4.1		
Adjust door closer		\$75
Notes: Exterior door operating effort is 20 lbs. (8.5 lbs. max.).		
State: 1101.2.2.5		
Federal: 404.2.9		
8 - 2	Door/Gate	Priority:
Provide sign(s) indicating accessible entries and facilities		\$250
Notes: Primary entrance is not identified with International Symbol of Accessibility.		
State: ---		
Federal: 216.6		
Install or modify permanent room signs		\$125
Notes: The door has no tactile and Braille EXIT sign.		
State: ---		
Federal: 703.4.1		
Adjust door closer		\$75
Notes: Exterior door operating effort is 20 lbs. (8.5 lbs. max.).		
State: 1101.2.2.5		
Federal: 404.2.9		
8 - 3	Door/Gate	Priority:
Install or modify permanent room signs		\$125
Notes: The door has no tactile and Braille EXIT sign.		
State: ---		
Federal: 703.4.1		

INTERNAL REVIEW DRAFT

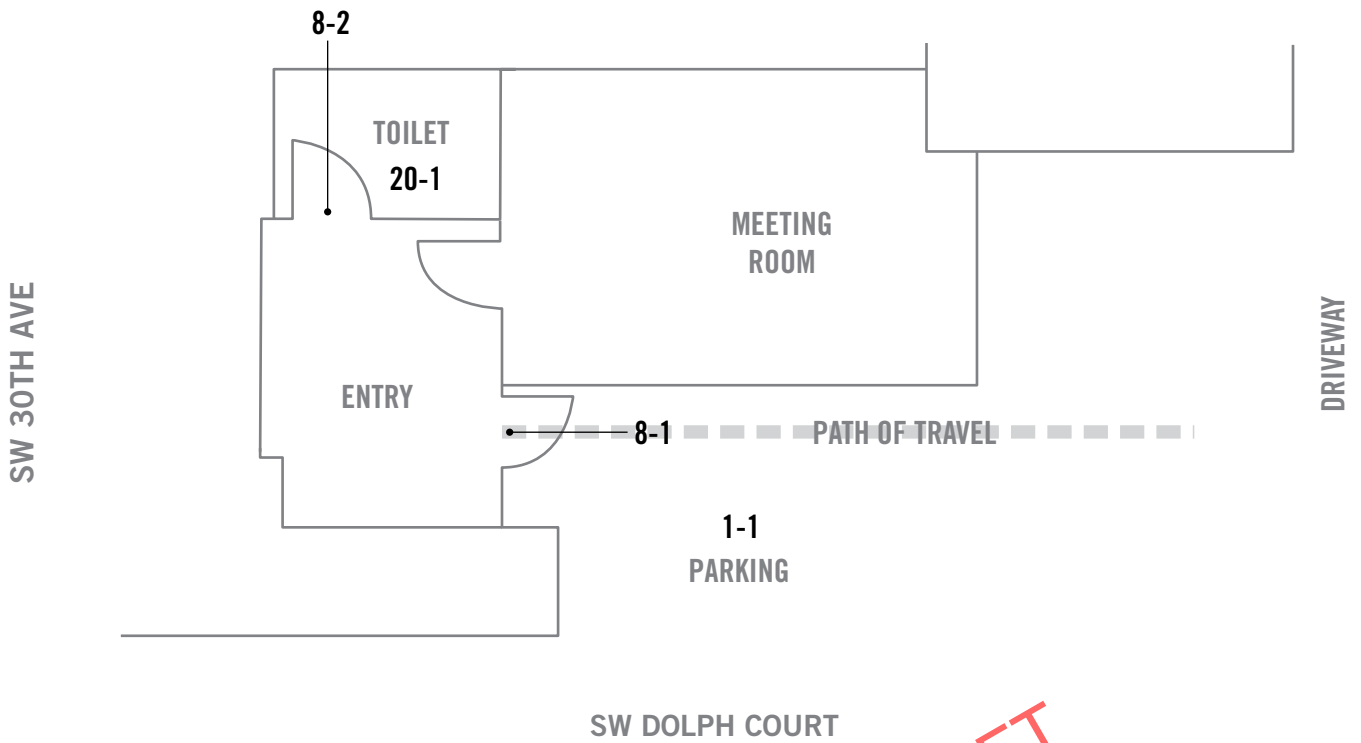
Floor 1		
8 - 4	Door/Gate	Priority:
Install or modify permanent room signs		\$125
Notes: The door has no tactile and Braille EXIT sign.		
State: ---		
Federal: 703.4.1		
Adjust door closer		\$75
Notes: Exterior operating effort is 11 lbs. (8.5 lbs. max.).		
State: 1101.2.2.5		
Federal: 404.2.9		
20 - 1	Single User Restroom	Priority:
Replace or reposition fixtures		\$1,500
Notes: Centerline of water closet is 19-3/4" (16-18" req.).		
State: ---		
Federal: 604.2		
Replace toilet or adjust toilet seat height		\$1,000
Notes: Toilet seat height 19-1/2" (17-19" req.).		
State: ---		
Federal: 604.4		
Modify lavatory or counter clearances		\$2,500
Notes: Knee space is 26-1/2" (27" min.) when measured 8" deep at centerline of lavatory.		
State: ---		
Federal: 306.3, 306.3.3		

INTERNAL REVIEW DRAFT

Intentionally Left Blank

INTERNAL REVIEW DRAFT

F&R-17: STATION 18 - MULTNOMAH VILLAGE
8720 SW 30TH AVE., PORTLAND OR



INTERNAL REVIEW DRAFT

Intentionally Left Blank

INTERNAL REVIEW DRAFT

Exterior		
1 - 1	Parking Area	Priority:
Provide or modify accessible spaces		\$85
Notes: International Symbol of Accessibility stencil is not provided. Accessible parking space is not striped.		
State: 1106.6, 1106.7.2		
Federal: ---, 502.6		
Provide or modify accessible access aisles		\$210
Notes: Access aisle is provided, but not striped.		
State: 1106.7.2		
Federal: 502.3.3		
Regrade surface		\$5,202
Notes: Slope of parking spaces and access aisles range from 3.1-4.2% (2% max.)		
State: ---		
Federal: 502.4, 504.4		
Install sign		\$250
Notes: Signs are mounted 30-36" above the parking space (60" min.)		
State: 1106.7.2		
Federal: 502.6		
Install van parking sign		\$250
Notes: Van Accessible sign is 12"x6" (18"x9" min.) The lettering for the word VAN is 1-1/2" high (2" min.) and the word ACCESSIBLE is 1" high (1-1/2" min.)		
State: 1106.5		
Federal: 208.2.4, 502.6		

INTERNAL REVIEW DRAFT

Floor 1		
8 - 1	Door/Gate	Priority:
	Provide sign(s) indicating accessible entries and facilities	\$250
Notes: Primary accessible entrance is not marked with the International Symbol of Accessibility.		
State: ---		
Federal: 216.6		
	Install or modify permanent room signs	\$125
Notes: Braille EXIT sign is not provided.		
State: ---		
Federal: 703.4.1		
	Adjust door closer	\$75
Notes: Exterior door operating effort is 10 lbs (8.5 lbs max.)		
State: 1101.2.2.5		
Federal: 404.2.9		
8 - 2	Door/Gate	Priority:
	Provide additional strike edge clearance	\$3,000
Notes: Grab bars obstruct the strike edge clearance on the pull side of the door.		
State: ---		
Federal: 404.2.4.1		
	Adjust door closer	\$75
Notes: Operating effort is 11 lbs (5lbs max.)		
State: 1101.2.2.5		
Federal: 404.2.9		

INTERNAL REVIEW DRAFT

Floor 1	
20 - 1	Single User Restroom
Priority:	
Replace or reposition fixtures	\$1,500
Notes: Centerline of the water closet from the wall is 21-1/2" (16-18" req.)	
State: ---	
Federal: 604.2	
Replace or reposition dispensers or mirrors	\$300
Notes: Reflecting surface of mirror is mounted at 43" AFF (40" max.) Paper towel dispenser is mounted at 57" AFF (48" max.)	
State: ---	
Federal: 603.3	
Modify lavatory or counter clearances	\$2,500
Notes: Centerline of the lavatory from the wall is 11-1/2" (15" min.)	
State: ---	
Federal: 606.2	
Insulate water lines	\$250
Notes: Hot water pipes are not insulated.	
State: ---	
Federal: 606.5	
Install sign	\$250
Notes: Restroom signage is mounted 68" AFF (60" req.)	
State: ---	
Federal: 703, 703.4.1, 703.4.2	

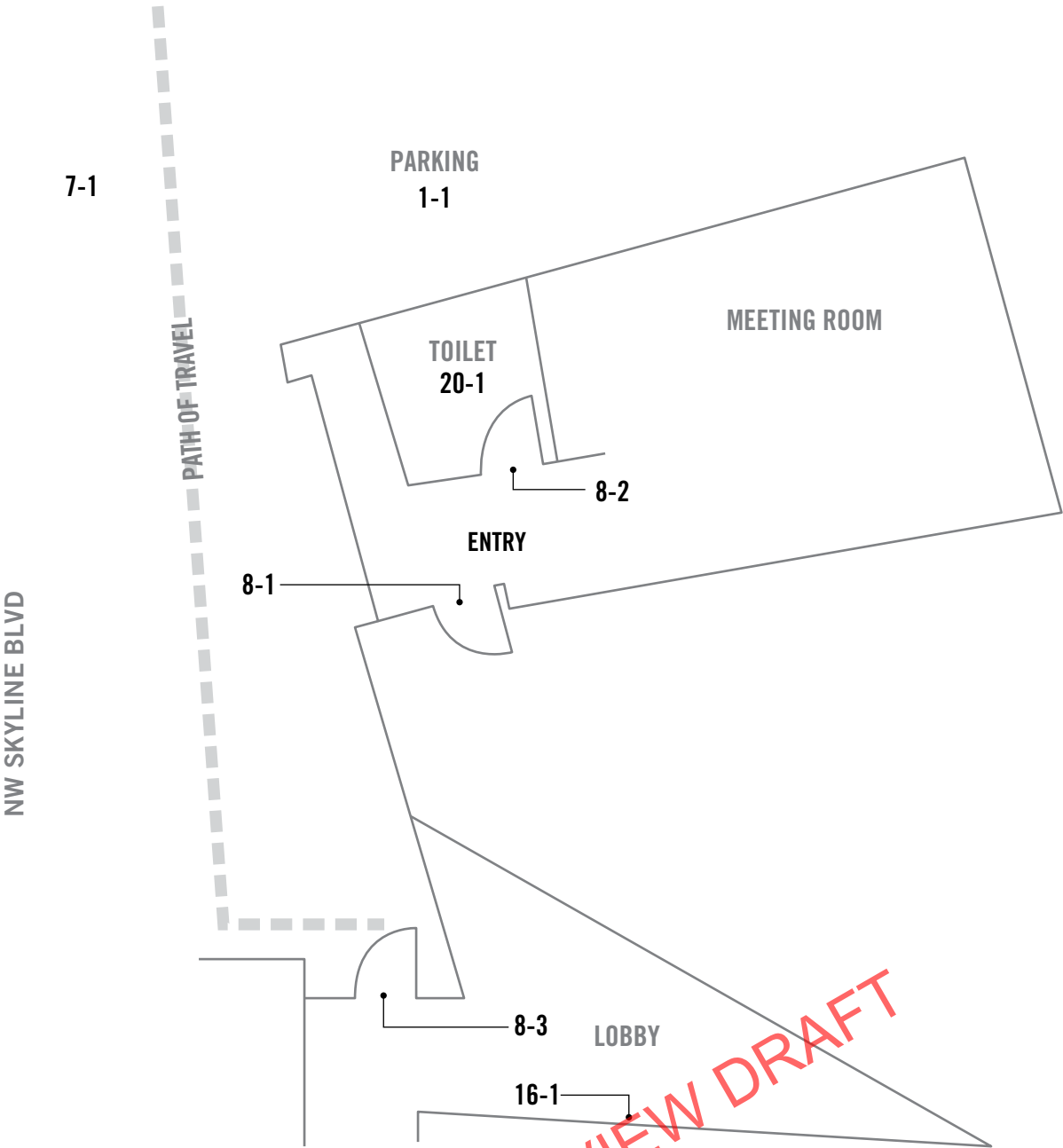
INTERNAL REVIEW DRAFT

Intentionally Left Blank

INTERNAL REVIEW DRAFT

F&R-26: STATION 27 - FOREST HEIGHTS

3130 NW SKYLINE BLVD., PORTLAND OR



INTERNAL REVIEW DRAFT

Intentionally Left Blank

INTERNAL REVIEW DRAFT

Exterior		
1 - 1	Parking Area	Priority:
Provide or modify accessible access aisles		\$210
Notes: Van access aisle is 6'10" (8' req.).		
State: 1106.7.1		
Federal: 502.3.1		
Install sign		\$250
Notes: Sign is white ISA on blue background. Required: "Reserved <input type="checkbox"/> Parking" sign on a white retroreflective background 12" <input type="checkbox"/> wide by 18" high, with a green retroreflective legend, and a <input type="checkbox"/> white ISA symbol on blue retroreflective symbol		
State: 1106.7.2		
Federal: 502.6, 703.7.2.1		
Install van parking sign		\$250
Notes: White on blue van access sign is 12" x 3". Required: White retroreflective background and green retroreflective lettering 18" wide by 9" high. The lettering height for the word "VAN" is 2" and for the word "ACCESSIBLE" is 1-1/2".		
State: 1106.5		
Federal: 208.2.4, 502.6		
7 - 1	Hazard	Priority:
Replace or reorient grate		\$1,000
Notes: Storm drain openings 1-1/2" by 6-1/4" (1/2" max. in any direction).		
State: ---		
Federal: 302.3		

INTERNAL REVIEW DRAFT

Floor 1		
8 - 1	Door/Gate	Priority:
	Replace or modify door threshold	\$125
Notes: Threshold is 3/4" vertical (1/4" max.)		
State: ---		
Federal: 404.2.5		
	Adjust door closer	\$75
Notes: Exterior door operating effort is 9 lbs (8.5 lbs max.)		
State: 1101.2.2.5		
Federal: 404.2.9		
8 - 2	Door/Gate	Priority:
	Adjust door closer	\$75
Notes: Restroom door operating effort is 10 lbs (5 lbs max.)		
State: 1101.2.2.5		
Federal: 404.2.9		
	Provide additional strike edge clearance	\$3,000
Notes: Strike edge clearance on the swing side of the door is 16" (18" min.) due to wall mounted sink.		
State: ---		
Federal: 404.2.4.1		
8 - 3	Door/Gate	Priority:
	Provide sign(s) indicating accessible entries and facilities	\$250
Notes: Primary accessible entrance is not marked with the International Symbol of Accessibility.		
State: ---		
Federal: 216.6		
16 - 1	Built-in Elements	Priority:
	Provide an accessible counter	\$2,500
Notes: Counter height is 43-1/4" AFF (36" max.)		
State: ---		
Federal: 904.4		

INTERNAL REVIEW DRAFT

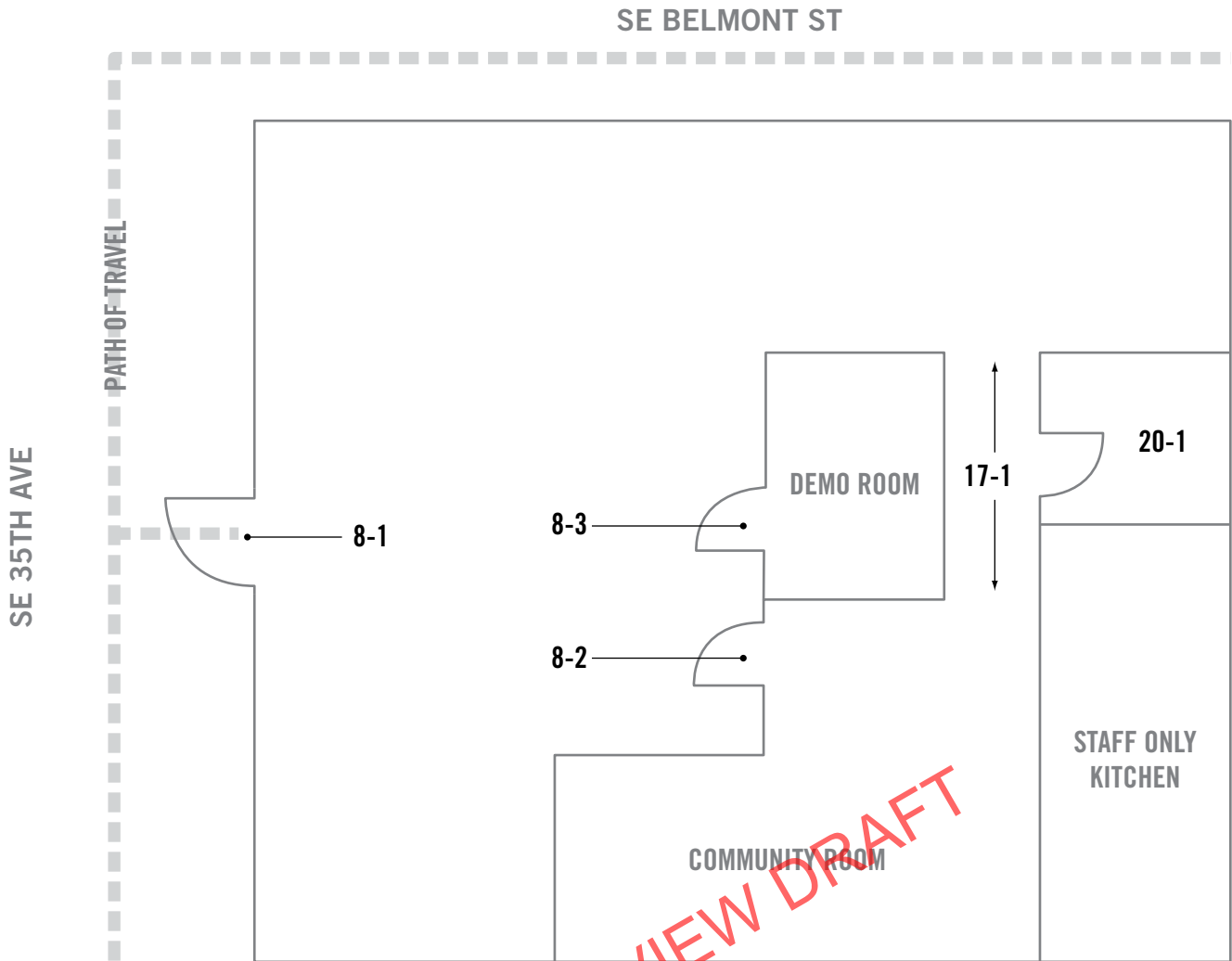
Floor 1	
20 - 1	Single User Restroom Priority:
Replace or reposition dispensers or mirrors	\$150
Notes: Reflecting surface of the mirror is mounted 50" AFF (40" max.)	
State: ---	
Federal: 603.3	
Modify lavatory or counter clearances	\$2,500
Notes: Knee space is 26-1/2" (27" min.) when measured 8" deep at the centerline of lavatory.	
State: ---	
Federal: 306.3, 306.3.3	

INTERNAL REVIEW DRAFT

Intentionally Left Blank

INTERNAL REVIEW DRAFT

F&R-31: BELMONT LEARNING CENTER
900 SE 35TH AVE., PORTLAND OR



INTERNAL REVIEW DRAFT

Intentionally Left Blank

INTERNAL REVIEW DRAFT

Floor 1		
8 - 1	Door/Gate	Priority:
Provide sign(s) indicating accessible entries and facilities		\$250
Notes: Primary accessible entrance is not marked with the International Symbol of Accessibility.		
State: ---		
Federal: 216.6		
Adjust door closer		\$75
Notes: Exterior door operating effort is 12 lbs (8.5 lbs max.)		
State: 1101.2.2.5		
Federal: 404.2.9		
Replace or modify door threshold		\$500
Notes: Door threshold is patched with asphalt. Slope in threshold area is 8.3% (2% max.)		
State: ---		
Federal: 404.2.5		
Install or modify permanent room signs		\$125
Notes: Tactile and Braille EXIT sign is not provided.		
State: ---		
Federal: 703.4.1		

INTERNAL REVIEW DRAFT

Floor 1		
8 - 2	Door/Gate	Priority:
	Enlarge door opening	\$1,650
Notes: Clear width of opening is 29-1/2" (32" min.)		
State: ---		
Federal: 404.2.3		
	Modify door window or side light	\$500
Notes: Window in door is located 48-1/2" AFF (43" max.)		
State: ---		
Federal: 404.2.11		
	Replace or adjust door hardware	\$1,000
Notes: Door hardware is a knob that requires grasping and twisting.		
State: ---		
Federal: 309.4		
	Provide or modify door kickplate	\$100
Notes: There is a door stop mounted in the kick plate.		
State: ---		
Federal: 404.2.10		
	Provide additional strike edge clearance	\$3,000
Notes: Strike edge clearance on the pull side of the door is 4-1/2" (18" min.). Strike edge clearance on the push side of the door is 3-1/2" (12" min.)		
State: ---		
Federal: 404.2.4.1		
8 - 3	Door/Gate	Priority:
	Enlarge door opening	\$1,650
Notes: Clear width of opening is 29-1/2" (32" min.)		
State: ---		
Federal: 404.2.3		
	Replace or adjust door hardware	\$1,000
Notes: Door hardware is a knob that requires grasping and twisting.		
State: ---		
Federal: 309.4		
	Provide or modify door kickplate	\$100
Notes: Door stop is mounted in the kick plate.		
State: ---		
Federal: 404.2.10		

INTERNAL REVIEW DRAFT

F&R-31: Belmont Learning Center

Floor 1		
17 - 1	Corridor / Aisle	Priority:
Widen corridor		\$5,000
Notes: Corridor width narrows to 28-1/4" (36" min.) Approx. 6 ft.		
State: ---		
Federal: 403.5.1		
20 - 1	Single User Restroom	Priority:
Renovate restroom		\$75,000
Notes: This single user restroom is not accessible and will require a complete renovation.		
State: ---		
Federal: 604.8.1.2		

INTERNAL REVIEW DRAFT

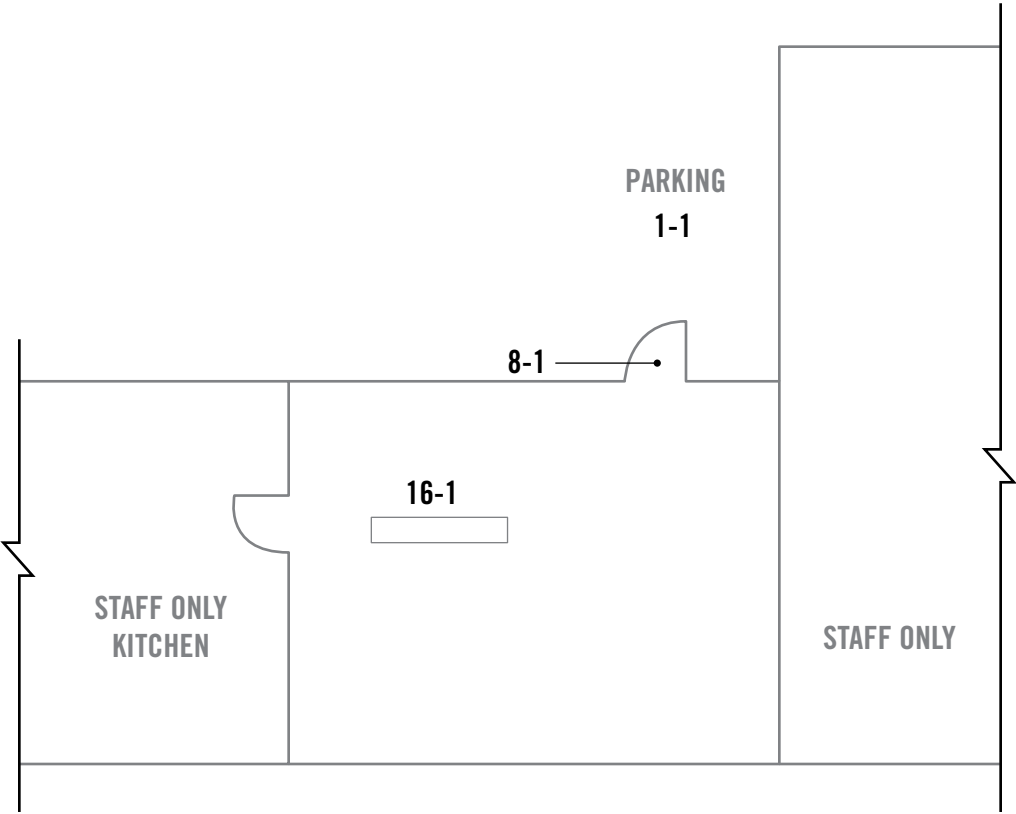
Intentionally Left Blank

INTERNAL REVIEW DRAFT

F&R-36: FIRE MARSHAL'S OFFICE
1280 SE GIDEON PORTLAND OR



GIDEON ST



INTERNAL REVIEW DRAFT

Intentionally Left Blank

INTERNAL REVIEW DRAFT

Exterior		Priority:
1 - 1	Parking Area	Priority:
Provide or modify accessible access aisles		\$210
Notes: Access aisle is not provided.		
State: 1106.7.2		
Federal: 502.3.3		
Provide or modify accessible spaces		\$85
Notes: Pavement stencil too faded to measure. Required: 28" high by a min. 24" wide ISA, painted with a min. 3" stroke width of retroreflective white paint on an optional blue retroreflective background.		
State: 1106.7.2		
Federal: 502.6		
Install sign		\$250
Notes: Sign is white ISA on blue background. Req.: "Reserved <input type="checkbox"/> Parking" sign on a white retroreflective background 12" <input type="checkbox"/> wide by 18" high, with a green retroreflective legend, and a <input type="checkbox"/> white ISA symbol on blue retroreflective symbol. Sign is mounted 58-3/4" (60" min.)		
State: 1106.7.2		
Federal: 502.6, 703.7.2.1		

INTERNAL REVIEW DRAFT

Floor 1		
8 - 1	Door/Gate	Priority:
	Provide sign(s) indicating accessible entries and facilities	\$250
Notes: Primary accessible entrance is not marked with the International Symbol of Accessibility.		
State: ---		
Federal: 216.6		
	Replace or modify door threshold	\$125
Notes: Threshold is 1/2" (1/4" max.)		
State: ---		
Federal: 404.2.5		
16 - 1	Built-in Elements	Priority:
	Provide an accessible counter	\$2,500
Notes: Counter height is 41-3/4" (36" max.)		
State: ---		
Federal: 904.4		

INTERNAL REVIEW DRAFT