



JANUARY 13, 2014

CITY OF PORTLAND
DRAFT Facility Report
Bureau of Transportation

This page intentionally left blank.

**INTERNAL REVIEW DRAFT
NOT FOR PUBLIC DISTRIBUTION**

Facilities

KERBY BUILDING (BOT-01)

2929 N Kerby Avenue Portland Oregon

STREET CAR BUILDING (BOT-06)

1516 NW Northrup Portland Oregon

NAITO & DAVIS PARKING GARAGE (BOT-09)

33 NW Davis Avenue Portland Oregon

O'BRYANT SQUARE GARAGE (BOT-10)

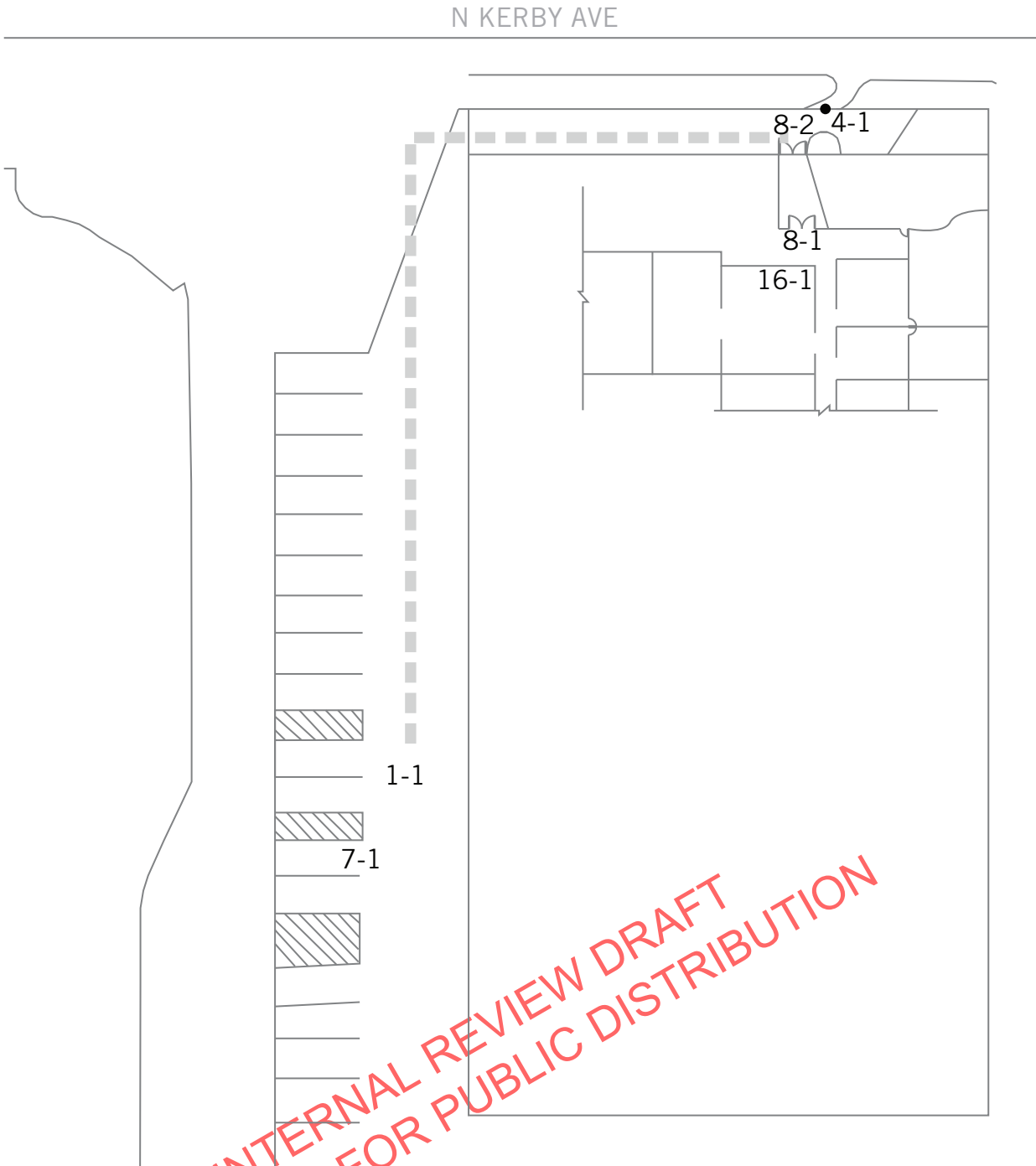
808 SW Stark Portland Oregon

INTERNAL REVIEW DRAFT
NOT FOR PUBLIC DISTRIBUTION

This page intentionally left blank.

**INTERNAL REVIEW DRAFT
NOT FOR PUBLIC DISTRIBUTION**

BOT-01: KERBY BUILDING
2929 N KERBY AVENUE, PORTLAND OR



**INTERNAL REVIEW DRAFT
NOT FOR PUBLIC DISTRIBUTION**

This page intentionally left blank.

**INTERNAL REVIEW DRAFT
NOT FOR PUBLIC DISTRIBUTION**

Building	
1 - 1	Parking Area
Category:	
Provide an accessible path of travel	\$1,140
<p>Notes: Travel from the closest accessible space to the front building entrance requires navigating behind nine parked cars. Path of travel over asphalt parking surface from farthest accessible space to the front entrance has three separate sections with cross slopes exceeding 2.0% and up to 4.0%, for a total of 33-1/2 linear feet. Path of travel to the front entrance over concrete around northeast corner and east side of building has two separate sections with cross slopes exceeding 2.0%, and up to 3.8%, for a total of 42-1/2 linear feet.</p>	
<p>State: --- Federal: 502.3</p>	
Provide or modify accessible spaces	\$0
<p>Notes: Parking area with less than 25 parking spaces has seven designated accessible spaces. Of the seven accessible spaces, two are lacking an accessible aisle (min of one accessible space that is van accessible). Designated accessible spaces provided are the closest ones to the staff entrance, but they are not the closest parking spaces to the front building entrance used by the general public.</p>	
<p>State: 1106.6, 1106.7.1 Federal: 208.2.4, 208.3.1</p>	
Regrade parking space or access aisle	\$11,200
<p>Notes: Slopes of five accessible parking spaces and the two westernmost access aisle exceed 2.0% max, with slopes up to 7.5%.</p>	
<p>State: 1106.7.1 Federal: 502.4, 504.4</p>	
Provide adequate striping	\$30
<p>Notes: One parking space has its striping covered in asphalt sealant (4" min wide stripes).</p>	
<p>State: 1106.6 Federal: ---</p>	
Install reserved parking sign	\$2,625
<p>Notes: Signs are mounted on posts 33-1/2" to 40-3/4" above the parking surface (60" min). Blue and white ISA signs are provided. Required: A "Reserved Parking" sign 12" wide by 18" high, with a green legend and a white ISA on blue symbol, all on a white retroreflective background.</p>	
<p>State: 1106.7.2, 1106.7.1 Federal: 502.6, 703.7.2.1</p>	
Provide or modify accessible access aisles	\$420
<p>Notes: Easternmost van access aisle width is 5' 11-1/2" (8' min).</p>	
<p>State: 1106.7.1 Federal: 502.3.1</p>	

Building		
4 - 1	Walk	Category:
Regrade surface		\$150
Notes: Cross slope of concrete path is up to 4.1% for 5 linear feet (2.0% max).		
State: ---		
Federal: 403.3		
7 - 1	Hazard	Category:
Install an accessible grate		\$250
Notes: Grate openings are 14-1/2" by 1-1/2" (1/2" max).		
State: ---		
Federal: 302.3		
8 - 1	Door/Gate	Category:
Install sign or modify sign		\$250
Notes: A tactile and Braille EXIT sign is not provided in passageway for emergency exit.		
State: ---		
Federal: 216.4.1, 703.4.1		
Adjust door closer		\$250
Notes: Door closer sweep times are 3 and 4 seconds (5 seconds min). Door opening force is 9 lbs on both leaves of the double door (5 lbs max).		
State: ---, 1101.2.2.5		
Federal: 404.2.8.1, 404.2.9		
Provide or modify door kickplate		\$450
Notes: A smooth and uninterrupted kick plate surface is not provided due to the top leading edge of the horizontal joint where window meets door frame with in the 10" space above the finished floor.		
State: -		
Federal: 404.2.10		

INTERNAL REVIEW DRAFT
NOT FOR PUBLIC DISTRIBUTION

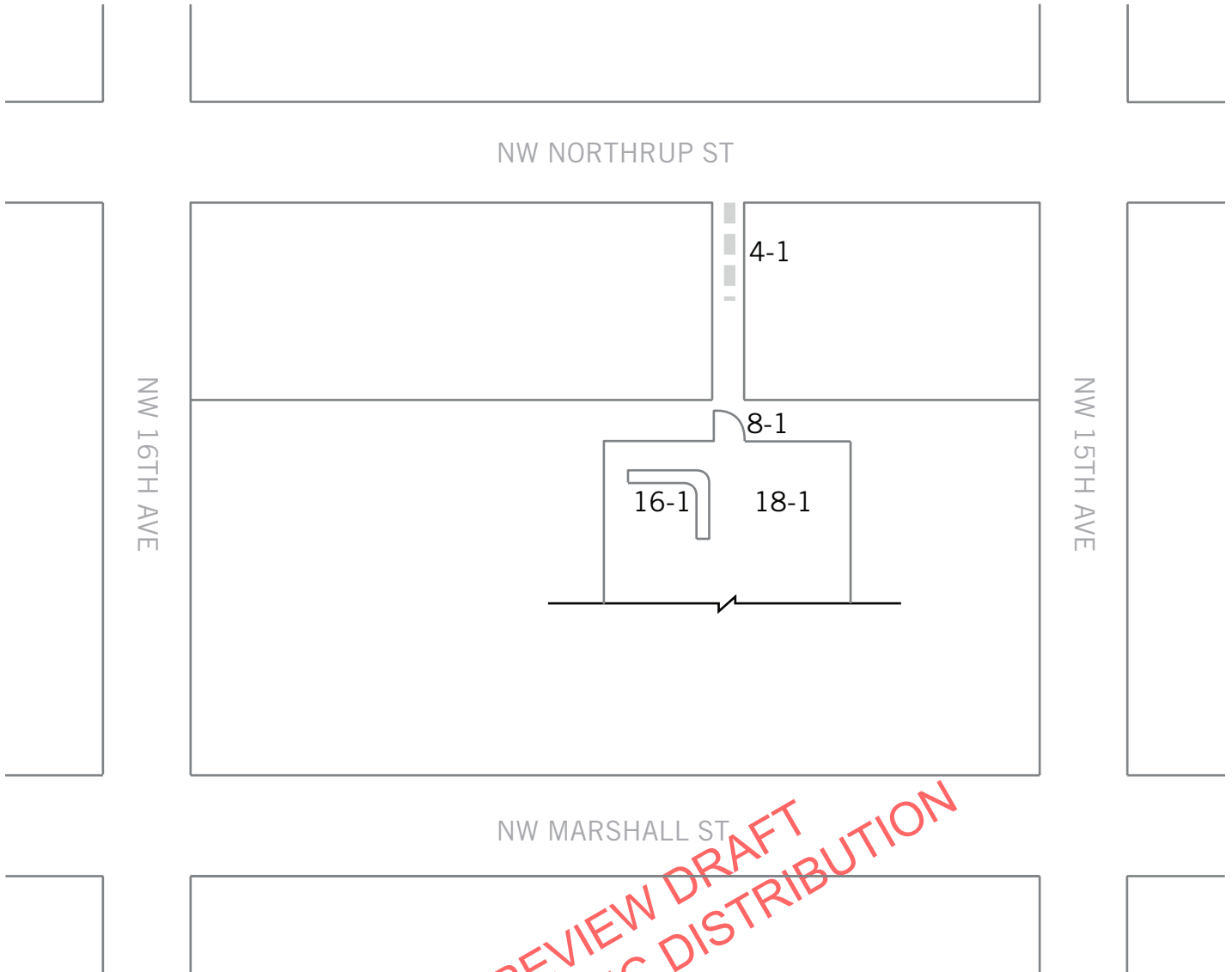
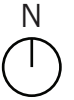
Building		
8 - 2	Door/Gate	Category:
Adjust door closer		\$125
Notes: Door closer sweep time is 3 seconds (5 seconds min). Door opening force is 12 lbs (8-1/2 lbs max for exterior door).		
State: ---, 1101.2.2.5		
Federal: 404.2.8.1, 404.2.9		
Provide or modify door kickplate		\$225
Notes: A smooth and uninterrupted kick plate surface is not provided due to the top leading edge of the horizontal joint where window meets door frame with in the 10" space above the finished floor.		
State: -		
Federal: 404.2.10		
Provide an accessible entrance		\$0
Notes: Barriers to accessing the building have been identified (at least 60% of all public entrances are accessible).		
State: -		
Federal: 206.4.1		
16 - 1	Built-in Elements	Category:
Provide an accessible counter		\$1,500
Notes: Service counter height is 43-1/4" above the floor surface (36" max).		
State: ---		
Federal: 904.4.1		

INTERNAL REVIEW DRAFT
NOT FOR PUBLIC DISTRIBUTION

This page intentionally left blank.

**INTERNAL REVIEW DRAFT
NOT FOR PUBLIC DISTRIBUTION**

BOT-06: STREET CAR BUILDING
1516 NW NORTHROP STREET, PORTLAND OR



INTERNAL REVIEW DRAFT
NOT FOR PUBLIC DISTRIBUTION

This page intentionally left blank.

**INTERNAL REVIEW DRAFT
NOT FOR PUBLIC DISTRIBUTION**

Building	
4 - 1	Walk Category:
Regrade surface	\$630
Notes: Cross slope of concrete path is up to 2.8% for 21 linear feet (2.0% max).	
State: ---	
Federal: 403.3	
8 - 1	Door/Gate Category:
Install sign or modify sign	\$250
Notes: A tactile and Braille EXIT sign is not provided in passageway for emergency exit.	
State: ---	
Federal: 216.4.1, 703.4.1	
16 - 1	Built-in Elements Category:
Provide an accessible counter	\$1,500
Notes: The service counter is 43-3/4" AFF (36" max).	
State: ---	
Federal: 904.4.1	
18 - 1	Room Category:
Attach carpet or tile to the floor surface	\$250
Notes: There are two loose floor rugs inside and outside the room (carpet or tile needs to be securely fastened to the floor).	
State: ---	
Federal: 302.2	

INTERNAL REVIEW DRAFT
NOT FOR PUBLIC DISTRIBUTION

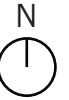
This page intentionally left blank.

**INTERNAL REVIEW DRAFT
NOT FOR PUBLIC DISTRIBUTION**

BOT-09: NAITO & DAVIS PARKING GARAGE

33 NW DAVIS AVENUE, PORTLAND OR

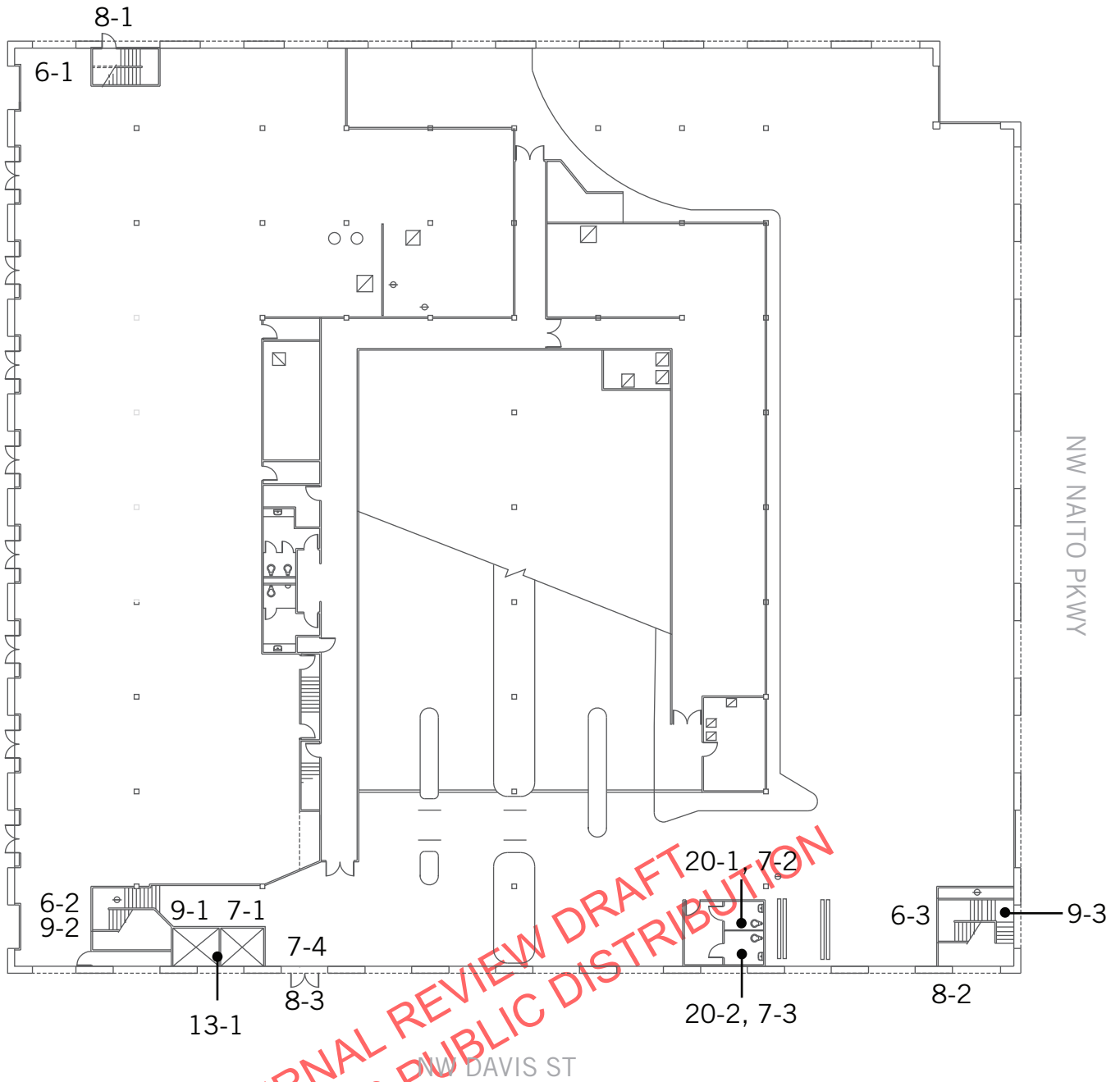
FIRST FLOOR



NW EVERETT ST

NW 1ST AVE

NW NAITO PKWY



INTERNAL REVIEW DRAFT
NOT FOR PUBLIC DISTRIBUTION

This page intentionally left blank.

**INTERNAL REVIEW DRAFT
NOT FOR PUBLIC DISTRIBUTION**

Floor 1		Category:
6 - 1	Stairway	
Replace stairs		\$6,300
<p>Notes: Stairway 1st to 2nd floor has 21 risers and two stair runs (7 and 14 risers). The lower run has tread widths ranging from 10-1/2" to 10-7/8" from riser to riser and the upper run has five tread widths that are 10-7/8" (11" min). The riser heights are 6-1/4" to 7-1/4" (4" min to 7" max with uniform heights req). Slopes of five treads are 2.3% to 3.1% (2.0% max).</p>		
<p>State: ---</p> <p>Federal: 504.02, 504.2, 504.3, 504.4</p>		
Install a handrail		\$2,500
<p>Notes: A handrail is not provided on one side of the stairway (handrails on both sides req) on the upper stair run. A parallel extension is not provided at the top of the handrail (12" min) on one side of the lower and upper stair run. A sloped extension is not provided at the bottom of the handrail (one tread-width min) on the lower stair run.</p>		
<p>State: ---</p> <p>Federal: 505.10.2, 505.10.3, 505.2, 505.3</p>		
Raise or lower existing handrail		\$1,400
<p>Notes: Handrail top surface is mounted 30-1/2" to 31-3/8" above the stair nosing (34" min to 38" max).</p>		
<p>State: ---</p> <p>Federal: 505.4</p>		
Install or modify stairway signage		\$250
<p>Notes: Floor level sign does not state the terminus of the exit enclosure or the story of and the direction to the exit discharge (signs provided at each floor landing in an exit enclosure connecting more than three stories). Sign is 15-1/4" square (18" by 12" min). Lettering identifying the stair enclosure is 1" to 1-3/8" (1-1/2" min). Sign is located in the intermediate landing of the stairway (sign located on each floor landing).</p>		
<p>State: ---, 1022.8, 1022.8.1, 1110.2, ANSI 504.9</p> <p>Federal: ---, 216.4.1</p>		

INTERNAL REVIEW DRAFT
NOT FOR PUBLIC DISTRIBUTION

Floor 1		Category:
6 - 2	Stairway	
Replace stairs		\$3,000
Notes: Stairway 1st to 2nd floor has 28 risers with three stair runs (11, 8 and 9 risers). The lowest tread on the bottom run has a tread width of 10-3/4" (11" min) and the slopes of the two bottom treads are 2.6% to 2.9% (2.0% max). The middle run tread widths range from 10-5/8" to 10-3/4" on seven of the eight risers (11" min).		
State: ---		
Federal: 504.02, 504.2, 504.3, 504.4		
Install a handrail		\$875
Notes: A 12" parallel extension is not provided at the top of the handrail on one side on the bottom and middle stair runs, and extensions are not provided on both sides of the top stair run. A sloped extension of 10-1/2" is provided at the bottom of the handrail on one side of the middle stair run, and none are provided on the lower stair run (one tread-width min).		
State: ---		
Federal: 505.10.2, 505.10.3, 505.3		
Raise or lower existing handrail		\$2,800
Notes: Handrail top surface is mounted 30-5/8" to 32" above the stair nosing (34" min to 38" max).		
State: ---		
Federal: 505.4		
Install or modify stairway signage		\$250
Notes: The stairway is an exit enclosure connecting more than three stories. A sign designating the floor level, the terminus of the top and bottom of the exit enclosure, identification of the stairway, the story of and direction to the exit discharge, and the availability of roof access is not provided.		
State: 1022.8, 1110.2		
Federal: ---		

INTERNAL REVIEW DRAFT
NOT FOR PUBLIC DISTRIBUTION

Floor 1		Category:
6 - 3	Stairway	Category:
Install a handrail		\$750
Notes: Stairway 1st to 2nd floor has 31 risers and four runs (4, 9, 9 and 9 risers). A parallel extension is not provided at the top of the handrail on one side of the stairway (12" min) on all four stair runs. A sloped extension is not provided at the bottom of the handrail (one tread-width min) on the lower run.		
State: ---		
Federal: 505.10.2, 505.10.3		
Raise or lower existing handrail		\$3,100
Notes: Handrail top surface is mounted 31-3/8" to 32-1/4" above the stair nosing (34" min to 38" max).		
State: ---		
Federal: 505.4		
Install or modify stairway signage		\$250
Notes: Floor level sign does not state the terminus of the exit enclosure or the story of and the direction to the exit discharge (signs provided at each floor landing in an exit enclosure connecting more than three stories). Sign is 15-1/4" square (18" by 12" min). Lettering identifying the stair enclosure is 1" to 1-3/8" (1-1/2" min). Sign is located in the intermediate landing of the stairway (sign located on each floor landing).		
State: ---, 1022.8, 1022.8.1, 1110.2, ANSI 504.9		
Federal: ---, 216.4.1		
7 - 1	Hazard	Category:
Repair or modify floor surface		\$250
Notes: There are two mats not securely attached to the floor surface (carpet or tile needs to be securely fastened to the floor).		
State: ---		
Federal: 302.2		
7 - 2	Hazard	Category:
Remove overhanging or protruding objects		\$125
Notes: Hand dryer protrudes 5-1/2" from wall at 40-5/8" AFF (protrusion more than 4" must be mounted below 27" or above 80").		
State: ---		
Federal: 307.2		

INTERNAL REVIEW DRAFT
NOT FOR PUBLIC DISTRIBUTION

Floor 1		
7 - 3	Hazard	Category:
Remove overhanging or protruding objects		\$125
Notes: Hand dryer protrudes 5-1/2" from wall at 40-3/8" AFF (protrusion more than 4" must be mounted below 27" or above 80").		
State: ---		
Federal: 307.2		
7 - 4	Hazard	Category:
Repair or modify floor surface		\$125
Notes: There is one mat not securely attached to the floor surface.		
State: ---		
Federal: 302.2		
8 - 1	Door/Gate	Category:
Replace door hardware		\$425
Notes: Door to stairwell. The door handle requires grasping and twisting to operate.		
State: ---		
Federal: 309.4		
8 - 2	Door/Gate	Category:
Adjust door closer		\$125
Notes: Door to stairwell. The door closer sweep time is 3 seconds (5 seconds min). Door opening force is 12 lbs (8-1/2 lbs max for exterior door).		
State: ---, 1101.2.2.5		
Federal: 404.2.8.1, 404.2.9		
Replace door hardware		\$425
Notes: Door handle requires grasping and twisting to operate.		
State: ---		
Federal: 309.4		
8 - 3	Door/Gate	Category:
Install sign or modify sign		\$250
Notes: A tactile and Braille EXIT sign is not provided in passageway for emergency exit.		
State: ---		
Federal: 216.4.1, 703.4.1		
Adjust door closer		\$125
Notes: Door closer sweep time is 3 seconds on the west leaf of the double door (5 seconds min).		
State: ---		
Federal: 404.2.8.1		

INTERNAL REVIEW DRAFT
NOT FOR PUBLIC DISTRIBUTION

Floor 1		
9 - 1	Sign	Category:
Relocate existing sign		\$125
Notes: "Attention!" sign lettering is 39" above the ground (40" min).		
State: ---		
Federal: 703.5.6		
9 - 2	Sign	Category:
Relocate existing sign		\$125
Notes: "Have you PAID for your Parking?" sign lettering is 38-7/8" above the ground (40" min).		
State: ---		
Federal: 703.5.6		
9 - 3	Sign	Category:
Relocate existing sign		\$125
Notes: "Have you PAID for your Parking?" sign lettering is 29-1/8" above the ground (40" min).		
State: ---		
Federal: 703.5.6		
13 - 1	Elevator	Category:
Adjust elevator controls and labeling		\$40,000
Notes: Car controls for the fire call button are located 58-1/4 AFF (15" min to 48"max, 54" max for existing elevators) in both elevator cars.		
State: ---		
Federal: 308.2.1, 308.3.1, 407.2.1, 407.4.7.1.3, 703.2.5, 703.3.1		
Adjust or provide elevator signals and indicators		\$5,600
Notes: Hallway signals indicating which car is answering and the direction of travel are not operable. The up arrow on the two cars is not functional.		
State: ---		
Federal: 407.2.2.1		
Install or modify informational and directional signs		\$1,500
Notes: Elevator landings above the ground floor do not provide signage indicating the location of the other means of egress, and which are the accessible means of egress.		
State: 1007.10, 1110.2		
Federal: ---		

INTERNAL REVIEW DRAFT
NOT FOR PUBLIC DISTRIBUTION

Floor 1	
20 - 1	Single User Restroom
Category:	
Provide clear floor or turning space	\$3,000
Notes: A 60" min diameter turning space unobstructed from the floor to a height of 27" min is not provided.	
State: ---	
Federal: 304.3.1, 306.3, 603.3.2.1	
Install restroom sign	\$250
Notes: A tactile and Braille restroom sign is not provided.	
State: ---	
Federal: 703, 703.4.1, 703.4.2	
Modify stall partitions	\$500
Notes: Clear width over water closet is 34-7/8" (60" min) to the lavatory.	
State: ---	
Federal: 604.3.1	
Regrade surface	\$3,000
Notes: Slope near the drain in the center of the room is 2.6% (2.0% max).	
State: ---	
Federal: 305.2	
Insulate hot water lines	\$125
Notes: Lavatory drain pipes are not insulated.	
State: ---	
Federal: 606.5	
Reposition toilet flush controls	\$750
Notes: Operating effort of flush control is 13 lbs (5 lbs max). Flush control is not located on the wide side of the water closet.	
State: ---	
Federal: 604.6	
Replace or modify grab bars	\$600
Notes: Rear grab bar is 29-3/4" long (36" long min, extends 12" and 24" min from centerline of water closet). A side grab bar is not provided (42" long min; starts 12" max from the rear wall and ends 54" min from the rear wall).	
State: ---	
Federal: 604.5.2, 609.5.1	
Modify grab bars	\$0
Notes: Rear grab bar is 36-3/4" AFF (33" min to 36" max).	
State: ---	
Federal: 609.4	

INTERNAL REVIEW DRAFT
NOT FOR PUBLIC DISTRIBUTION

Floor 1	
20 - 2	Single User Restroom
Category:	
Install restroom sign	\$250
Notes: A tactile and Braille restroom sign is not provided.	
State: ---	
Federal: 703, 703.4.1, 703.4.2	
Provide clear floor or turning space	\$3,000
Notes: A 60" min diameter turning space unobstructed from the floor to a height of 27" min is not provided.	
State: ---	
Federal: 304.3.1, 306.3, 603.3.2.1	
Modify grab bars	\$400
Notes: Side grab bar is 36-5/8" to 37-1/4" AFF (33" min to 36" max). Rear grab bar is 37-1/4" AFF (33" min to 36" max).	
State: ---	
Federal: 609.4	
Modify stall partitions	\$500
Notes: Clear width over water closet is 35-1/2" (60" min) to the lavatory.	
State: ---	
Federal: 604.3.1	
Insulate hot water lines	\$125
Notes: Lavatory drain pipes are not insulated.	
State: ---	
Federal: 606.5	
Replace or adjust water controls	\$500
Notes: Operating effort of lavatory faucet is 7 lbs and 8 lbs (5 lbs max). Water flows from faucet for 6 seconds and 8 seconds (10 seconds min).	
State: ---	
Federal: 309.4, 606.4	
Modify operating mechanism	\$250
Notes: Operating effort of hand dryer is 7 lbs (5 lbs max).	
State: ANSI 606.7	
Federal: 309.4	
Reposition toilet flush controls	\$750
Notes: Operating effort of flush control is 19-1/2 lbs (5 lbs max). Flush control is not located on the wide side of the water closet.	
State: ---	
Federal: 604.6	

INTERNAL REVIEW DRAFT
NOT FOR PUBLIC DISTRIBUTION

BOT-09: Naito & Davis Parking Garage

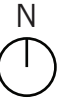
Floor 1	
20 - 2	Single User Restroom
Category:	
Regrade surface	\$3,000
Notes: Slope near the drain in the center of the room is 3.8% (2.0% max).	
State: ---	
Federal: 305.2	
Modify lavatory or counter clearances	\$1,500
Notes: Knee space measured at 8" deep from the centerline of the lavatory is 26-3/4" AFF (27" min).	
State: ---	
Federal: 306.3, 306.3.3	

INTERNAL REVIEW DRAFT
NOT FOR PUBLIC DISTRIBUTION

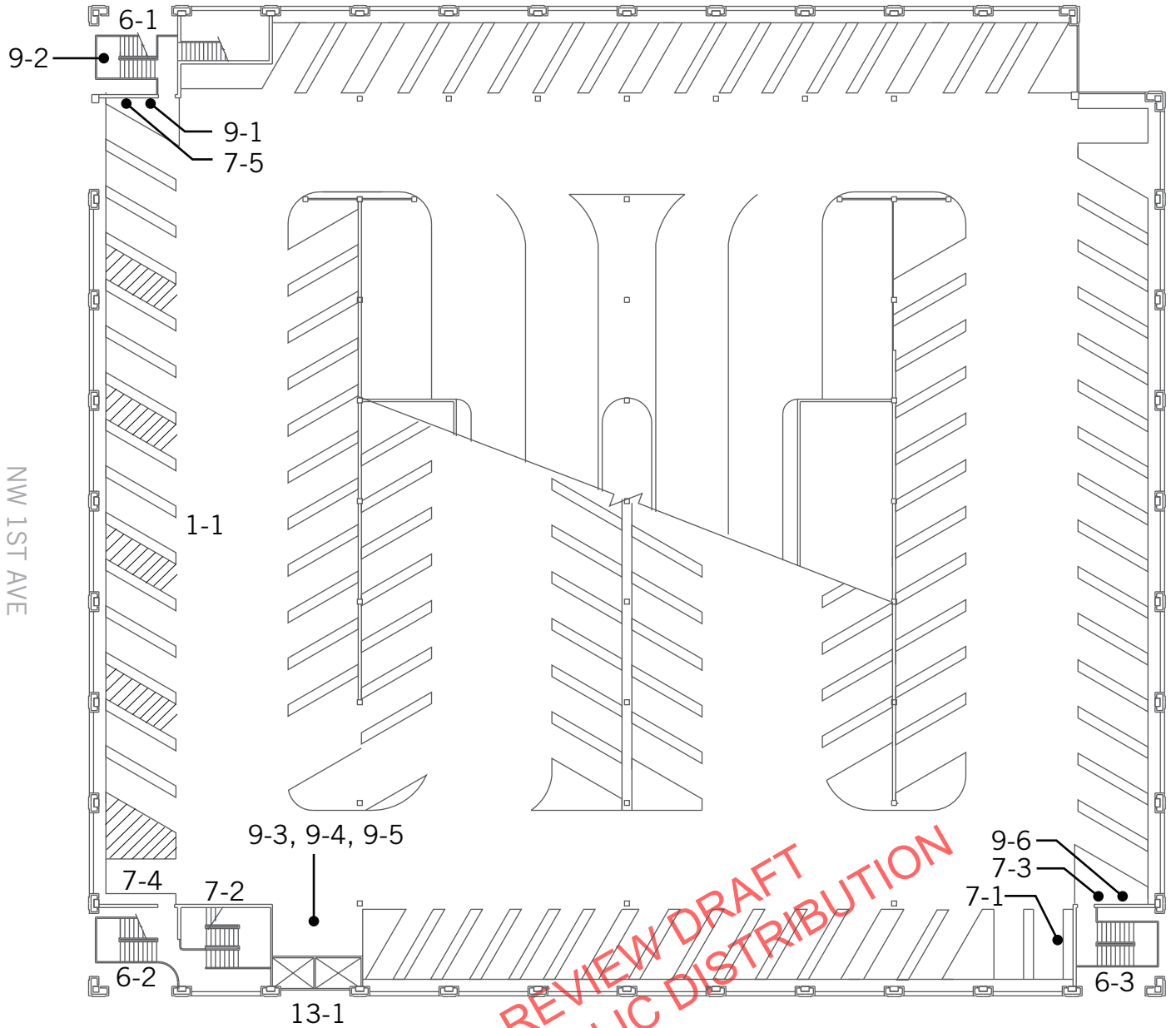
BOT-09: NAITO & DAVIS PARKING GARAGE

33 NW DAVIS AVENUE, PORTLAND OR

SECOND FLOOR



NW EVERETT ST



NW 1ST AVE

NW NAITO PKWY

INTERNAL REVIEW DRAFT
NOT FOR PUBLIC DISTRIBUTION

NW DAVIS ST

This page intentionally left blank.

**INTERNAL REVIEW DRAFT
NOT FOR PUBLIC DISTRIBUTION**

Floor 2	
1 - 1	Parking Area
Category:	
Provide or modify accessible spaces	\$5,890
Notes: Total number of parking garage spaces is 449. The total number of accessible parking spaces provided is 10. Van accessible spaces are not provided (2 van accessible spaces min).	
State: 1106.7.1	
Federal: 208.2.4	
Provide a pavement stencil	\$2,100
Notes: A pavement International Symbol of Accessibility, painted with retroreflective white paint is not provided in any of the designated accessible parking spaces.	
State: 1106.7.2	
Federal: 502.6	
Install reserved parking sign	\$3,750
Notes: Blue and white ISA signs provided. Required: A "Reserved Parking" sign 12" wide by 18" high, with a green legend and a white ISA on blue symbol, all on a white retroreflective background.	
State: 1106.7.2	
Federal: 502.6, 703.7.2.1	
Install van accessible sign	\$750
Notes: A "Van Accessible" sign is not provided. Required: A "Van Accessible" sign that is 18" wide by 9" high on a white retroreflective background and green retroreflective lettering provided at each van accessible space.	
State: 1106.5	
Federal: 208.2.4, 502.6	
Remove overhanging or protruding objects	\$0
Notes: Vertical clearance for accessible parking spaces and access aisles and the vehicle route from the entrance is 84-1/2" to 85-1/2" (98" min for one van accessible space).	
State: ---	
Federal: 502.5	

INTERNAL REVIEW DRAFT
NOT FOR PUBLIC DISTRIBUTION

Floor 2	
6 - 1	Stairway
Category:	
Replace stairs	\$3,900
<p>Notes: Stairway 2nd to 3rd floor has 18 risers and two stair runs (9 and 9 risers). The lower run has tread width ranging from 10-3/4" to 10-7/8" from riser to riser (11" min) with riser heights that are 6-1/4" to 7-1/2" (4" min to 7" max). The upper stair run has four treads with slopes ranging from 2.6% to 3.2% (2.0% max).</p>	
<p>State: ---</p> <p>Federal: 504.02, 504.2, 504.3</p>	
Install a handrail	\$500
<p>Notes: A parallel extension is not provided at the top of the handrail on one side of the stairway (12" min) on both the upper and lower stair runs. Sloped extensions are not provided at the bottom of the lower stair run handrails (one tread-width min).</p>	
<p>State: ---</p> <p>Federal: 505.10.2, 505.10.3</p>	
Raise or lower existing handrail	\$1,800
<p>Notes: Handrail top surface is mounted 31-1/4" to 32" above the stair nosing (34" min to 38" max).</p>	
<p>State: ---</p> <p>Federal: 505.4</p>	
Install or modify stairway signage	\$500
<p>Notes: Floor level sign does not state the terminus of the exit enclosure or the story of and the direction to the exit discharge (signs provided at each floor landing in an exit enclosures connecting more than three stories). Sign is 15-1/4" square (18" by 12" min). Lettering identifying the stair enclosure is 1" to 1-3/8" (1-1/2" min). Sign is located in the intermediate landing of the stairway (sign located on each floor landing). A tactile and Braille EXIT sign is not provided.</p>	
<p>State: ---, 1022.8, 1022.8.1, 1110.2</p> <p>Federal: ---, 216.4.1</p>	

INTERNAL REVIEW DRAFT
NOT FOR PUBLIC DISTRIBUTION

Floor 2		Category:
6 - 2	Stairway	
Replace stairs		\$3,300
Notes: Stairway 2nd to 3rd floor has 18 risers and two stair runs (9 and 9 risers). On the lower stair run, the slope of the bottom tread is 4.1% and the top tread is 3.7% (2.0% max). On the upper stair run, the bottom riser height is 5-3/4", while others are 6-1/4" to 6-3/4" (uniform heights req).		
State: ---		
Federal: 504.2, 504.4		
Install a handrail		\$500
Notes: A parallel extension is not provided at the top of the handrail on one side of the stairway (12" min) on both the upper and lower stair runs. Sloped extensions are not provided at the bottom of the lower stair run handrails (one tread-width min).		
State: ---		
Federal: 505.10.2, 505.10.3		
Raise or lower existing handrail		\$1,800
Notes: Handrail top surface is mounted 31-1/8" to 32-1/8" above the stair nosing (34" min to 38" max).		
State: ---		
Federal: 505.4		
Install or modify stairway signage		\$500
Notes: Floor level sign does not state the terminus of the exit enclosure or the story of and the direction to the exit discharge (signs provided at each floor landing in an exit enclosures connecting more than three stories). Sign is 15-1/4" square (18" by 12" min). Lettering identifying the stair enclosure is 1" to 1-3/8" (1-1/2" min). Sign is located in the intermediate landing of the stairway (sign located on each floor landing). A tactile and Braille EXIT sign is not provided.		
State: ---, 1022.8, 1022.8.1, 1110.2		
Federal: ---, 216.4.1		

INTERNAL REVIEW DRAFT
NOT FOR PUBLIC DISTRIBUTION

Floor 2		Category:
6 - 3	Stairway	Category:
Replace stairs		\$900
Notes: Stairway 2nd to 3rd floor has 18 risers and two stair runs (9 and 9 risers). On the lower stair run, the slope of the third tread from the bottom is 2.7% and on the upper stair run the third tread from the bottom and first tread from top are 2.9% and 2.8% (2.0% max).		
State: ---		
Federal: 504.4		
Install a handrail		\$250
Notes: A parallel extension is not provided at the top of the handrail on one side of the stairway (12" min) on both the upper and lower stair runs.		
State: ---		
Federal: 505.10.2		
Raise or lower existing handrail		\$1,800
Notes: Handrail top surface is mounted 31-1/4" to 32" above the stair nosing (34" min to 38" max).		
State: ---		
Federal: 505.4		
Install or modify stairway signage		\$500
Notes: Floor level sign does not state the terminus of the exit enclosure or the story of and the direction to the exit discharge (signs provided at each floor landing in an exit enclosures connecting more than three stories). Sign is 15-1/4" square (18" by 12" min). Lettering identifying the stair enclosure is 1" to 1-3/8" (1-1/2" min). Sign is located in the intermediate landing of the stairway (sign located on each floor landing). A tactile and Braille EXIT sign is not provided.		
State: ---, 1022.8, 1022.8.1, 1110.2		
Federal: ---, 216.4.1		
7 - 1	Hazard	Category:
Remove overhanging or protruding objects		\$125
Notes: Fire extinguisher protrudes 6-1/2" from wall at 37-3/8" AFF (protrusion more than 4" must be mounted below 27" or above 80").		
State: ---		
Federal: 307.2		
7 - 2	Hazard	Category:
Remove overhanging or protruding objects		\$125
Notes: Fire extinguisher protrudes 6-1/2" from wall at 30" AFF (protrusion more than 4" must be mounted below 27" or above 80").		
State: ---		
Federal: 307.2		

Floor 2		
7 - 3	Hazard	Category:
Remove overhanging or protruding objects		\$125
Notes: Water valve protrudes 12" from wall at 54-3/8" AFF (protrusion more than 4" must be mounted below 27" or above 80").		
State: ---		
Federal: 307.2		
7 - 4	Hazard	Category:
Remove overhanging or protruding objects		\$125
Notes: Water valve protrudes 16" from wall at 41-1/4" AFF (protrusion more than 4" must be mounted below 27" or above 80").		
State: ---		
Federal: 307.2		
7 - 5	Hazard	Category:
Remove overhanging or protruding objects		\$125
Notes: Water valve protrudes 13" from wall at 45-1/4" AFF (protrusion more than 4" must be mounted below 27" or above 80").		
State: ---		
Federal: 307.2		
9 - 1	Sign	Category:
Relocate existing sign		\$125
Notes: "Smart Park Level 2" sign lettering is 37-7/8" above the ground (40" min).		
State: ---		
Federal: 703.5.6		
Install or modify permanent room sign		\$250
Notes: "Smart Park Level 2" sign has a high gloss finish (non-glare finish).		
State: ---		
Federal: 703.5.1		
9 - 2	Sign	Category:
Relocate existing sign		\$125
Notes: "Have you PAID for your Parking?" sign lettering is 34-1/2" above the ground (40" min).		
State: ---		
Federal: 703.5.6		

INTERNAL REVIEW DRAFT
NOT FOR PUBLIC DISTRIBUTION

BOT-09: Naito & Davis Parking Garage

Floor 2	
9 - 3	Sign Category:
Relocate existing sign	\$125
Notes: "Smart Park Level 2" sign lettering is 38-1/2" above the ground (40" min).	
State: ---	
Federal: 703.5.6	
9 - 4	Sign Category:
Relocate existing sign	\$125
Notes: "Attention!" sign lettering is 39-1/4" above the ground (40" min).	
State: ---	
Federal: 703.5.6	
9 - 5	Sign Category:
Relocate existing sign	\$125
Notes: "Pay at pay station" sign lettering is 13" to 13-1/4" above the ground (40" min).	
State: ---	
Federal: 703.5.6	
9 - 6	Sign Category:
Relocate existing sign	\$125
Notes: "Smart Park Level 2" sign lettering is 38" above the ground (40" min).	
State: ---	
Federal: 703.5.6	
Install or modify permanent room sign	\$250
Notes: "Smart Park Level 2" sign has a high gloss finish (non-glare finish).	
State: ---	
Federal: 703.5.1	

INTERNAL REVIEW DRAFT
NOT FOR PUBLIC DISTRIBUTION

Floor 2	
13 - 1 Elevator	Category:
Increase or provide clear floor space	\$1,000
Notes: Slope of the clear floor space at the hallway call buttons is 2.4% (2.0% max) on Level 2.	
State: ---	
Federal: 305.2, 407.2.1.3	
Adjust or provide elevator signals and indicators	\$2,500
Notes: Hallway call buttons do not indicate when the call is registered and answered on Level 2.	
State: ---	
Federal: 407.2.1.5	

INTERNAL REVIEW DRAFT
NOT FOR PUBLIC DISTRIBUTION

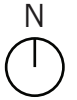
This page intentionally left blank.

**INTERNAL REVIEW DRAFT
NOT FOR PUBLIC DISTRIBUTION**

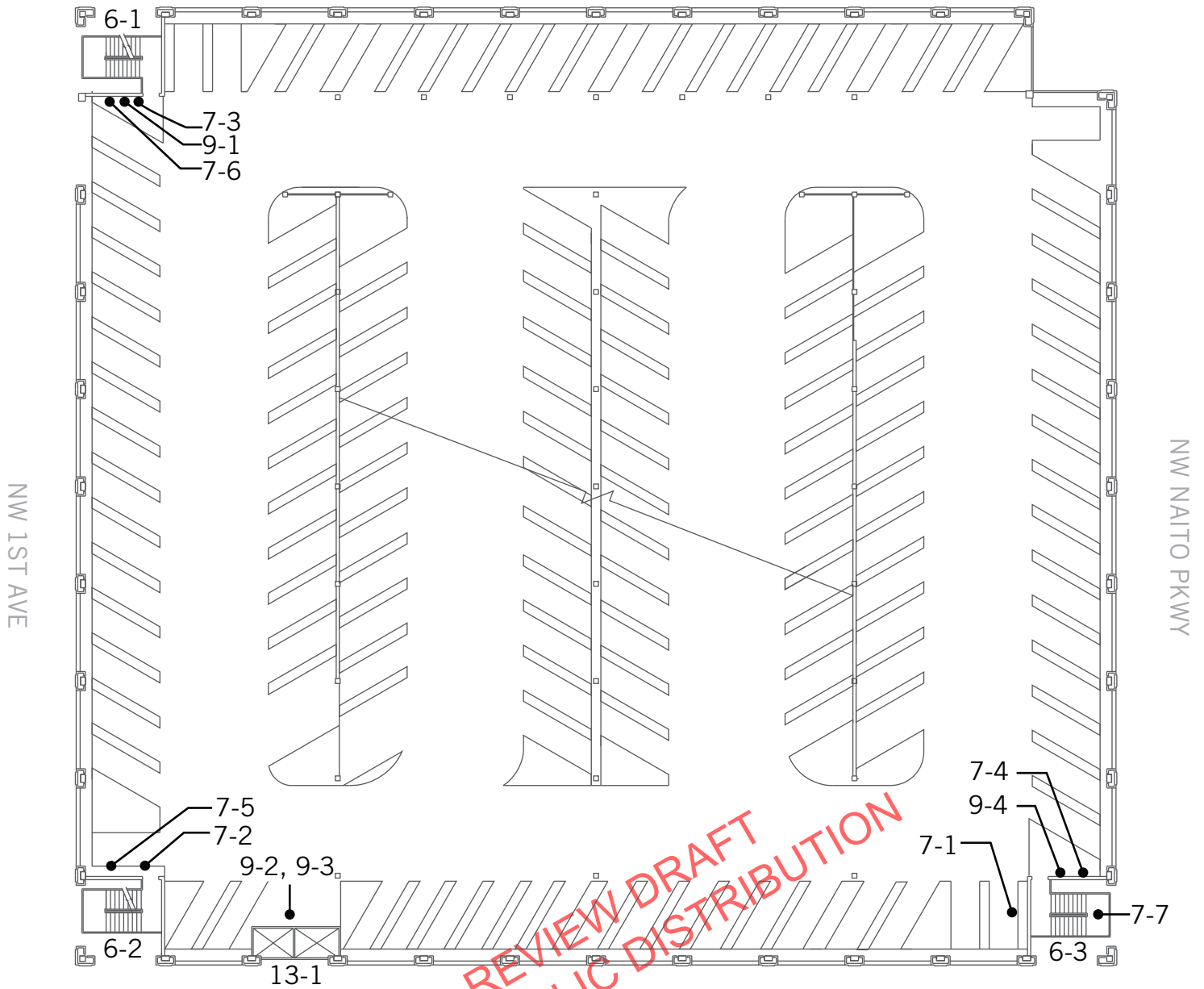
BOT-09:NAITO & DAVIS PARKING GARAGE

33 NW DAVIS AVENUE, PORTLAND OR

THIRD FLOOR



NW EVERETT ST



NW 1ST AVE

NW NAITO PKWY

NW DAVIS ST

**INTERNAL REVIEW DRAFT
NOT FOR PUBLIC DISTRIBUTION**

This page intentionally left blank.

**INTERNAL REVIEW DRAFT
NOT FOR PUBLIC DISTRIBUTION**

Floor 3	
6 - 1	Stairway
Category:	
Replace stairs	\$1,500
Notes: Stairway 3rd to 4th floor has 18 risers and two stair runs (9 and 9 risers). On the lower stair run, slopes of two treads are 3.0% and 3.1% and three of the treads on the upper run are 2.6% to 3.0% (2.0% max).	
State: ---	
Federal: 504.4	
Install a handrail	\$375
Notes: A parallel extension is not provided at the top of the handrail on one side of the stairway (12" min) on both the upper and lower stair run. On the upper stair run a sloped extension is not provided at the bottom of the handrail on one side of the stairway (one tread-width min).	
State: ---	
Federal: 505.10.2, 505.10.3	
Raise or lower existing handrail	\$1,800
Notes: Handrail top surface is mounted 31" to 32-3/4" above the stair nosing (34" min to 38" max).	
State: ---	
Federal: 505.4	
Install or modify stairway signage	\$500
Notes: Floor level sign does not state the terminus of the exit enclosure or the story of and the direction to the exit discharge (signs provided at each floor landing in an exit enclosures connecting more than three stories). Sign is 15-1/4" square (18" by 12" min). Lettering identifying the stair enclosure is 1" to 1-3/8" (1-1/2" min). Sign is located in the intermediate landing of the stairway (sign located on each floor landing). A tactile and Braille EXIT sign is not provided.	
State: ---, 1022.8, 1022.8.1, 1110.2	
Federal: ---, 216.4.1	

INTERNAL REVIEW DRAFT
NOT FOR PUBLIC DISTRIBUTION

Floor 3	
6 - 2	Stairway
Category:	
Install a handrail	\$375
<p>Notes: Stairway 3rd to 4th floor has 18 risers and two stair runs (9 and 9 risers). A parallel extension is not provided at the top of the handrail on one side of the stairway (12" min) on both the upper and lower stair runs. Sloped handrail extension of 10-5/8" is provided on one side of the bottom of the lower stair run (one tread-width min).</p>	
<p>State: ---</p> <p>Federal: 505.10.2, 505.10.3</p>	
Raise or lower existing handrail	\$1,800
<p>Notes: Handrail top surface is mounted 31-1/4" to 32-1/2" above the stair nosing (34" min to 38" max).</p>	
<p>State: ---</p> <p>Federal: 505.4</p>	
Install or modify stairway signage	\$500
<p>Notes: Floor level sign does not state the terminus of the exit enclosure or the story of and the direction to the exit discharge (signs provided at each floor landing in an exit enclosures connecting more than three stories). Sign is 15-1/4" square (18" by 12" min). Lettering identifying the stair enclosure is 1" to 1-3/8" (1-1/2" min). Sign is located in the intermediate landing of the stairway (sign located on each floor landing). A tactile and Braille EXIT sign is not provided.</p>	
<p>State: ---, 1022.8, 1022.8.1, 1110.2</p> <p>Federal: ---, 216.4.1</p>	

INTERNAL REVIEW DRAFT
NOT FOR PUBLIC DISTRIBUTION

Floor 3		6 - 3	Stairway	Category:
Replace stairs				\$300
Notes: Stairway 3rd to 4th floor has 18 risers and two stair runs (9 and 9 risers). The slope of the second tread from top on bottom stair run is 3.3% (2.0% max).				
State: ---				
Federal: 504.4				
Install a handrail				\$375
Notes: A parallel extension is not provided at the top of the handrail on one side of the stairway (12" min) on the lower stair run, and no parallel extensions are provided at the top of the upper stair run.				
State: ---				
Federal: 505.10.2				
Raise or lower existing handrail				\$1,800
Notes: Handrail top surface is mounted 31-1/8" to 32-3/8" above the stair nosing (34" min to 38" max).				
State: ---				
Federal: 505.4				
Install or modify stairway signage				\$500
Notes: Floor level sign does not state the terminus of the exit enclosure or the story of and the direction to the exit discharge (signs provided at each floor landing in an exit enclosures connecting more than three stories). Sign is 15-1/4" square (18" by 12" min). Lettering identifying the stair enclosure is 1" to 1-3/8" (1-1/2" min). Sign is located in the intermediate landing of the stairway (sign located on each floor landing). A tactile and Braille EXIT sign is not provided.				
State: ---, 1022.8, 1022.8.1, 1110.2				
Federal: ---, 216.4.1				
7 - 1	Hazard	Category:		
Remove overhanging or protruding objects				\$125
Notes: Fire extinguisher protrudes 6-1/2" from wall at 32-1/4" AFF (protrusion more than 4" must be mounted below 27" or above 80").				
State: ---				
Federal: 307.2				
7 - 2	Hazard	Category:		
Remove overhanging or protruding objects				\$125
Notes: Fire extinguisher protrudes 6-1/2" from wall at 30-3/8" AFF (protrusion more than 4" must be mounted below 27" or above 80").				
State: ---				
Federal: 307.2				

INTERNAL REVIEW DRAFT
NOT FOR PUBLIC DISTRIBUTION

Floor 3		
7 - 3	Hazard	Category:
Remove overhanging or protruding objects		\$125
Notes: Fire extinguisher protrudes 6-1/2" from wall at 32-5/8" AFF (protrusion more than 4" must be mounted below 27" or above 80").		
State: ---		
Federal: 307.2		
7 - 4	Hazard	Category:
Remove overhanging or protruding objects		\$125
Notes: Water valve protrudes 12" from wall at 44-1/2" AFF (protrusion more than 4" must be mounted below 27" or above 80").		
State: ---		
Federal: 307.2		
7 - 5	Hazard	Category:
Remove overhanging or protruding objects		\$125
Notes: Water valve protrudes 13" from wall at 45" AFF (protrusion more than 4" must be mounted below 27" or above 80").		
State: ---		
Federal: 307.2		
7 - 6	Hazard	Category:
Remove overhanging or protruding objects		\$125
Notes: Water valve protrudes 12-1/2" from wall at 47-1/2" AFF (protrusion more than 4" must be mounted below 27" or above 80").		
State: ---		
Federal: 307.2		
7 - 7	Hazard	Category:
Remove overhanging or protruding objects		\$375
Notes: Three utility boxes protrude 7-1/4" from wall at 54-1/4", 54-1/2" and 54-5/8" AFF (protrusion more than 4" must be mounted below 27" or above 80").		
State: ---		
Federal: 307.2		

INTERNAL REVIEW DRAFT
NOT FOR PUBLIC DISTRIBUTION

Floor 3	
9 - 1	Sign Category:
Relocate existing sign	\$125
Notes: "Smart Park Level 3" sign lettering is 37-5/8" above the ground (40" min).	
State: ---	
Federal: 703.5.6	
Install or modify permanent room sign	\$250
Notes: "Smart Park Level 3" sign has a high gloss finish (non-glare finish).	
State: ---	
Federal: 703.5.1	
9 - 2	Sign Category:
Relocate existing sign	\$125
Notes: "Attention!" sign lettering is 39" above the ground (40" min).	
State: ---	
Federal: 703.5.6	
9 - 3	Sign Category:
Relocate existing sign	\$125
Notes: "Smart Park Level 3" sign lettering is 36-3/8" above the ground (40" min).	
State: ---	
Federal: 703.5.6	
Install or modify permanent room sign	\$250
Notes: "Smart Park Level 3" sign has a high gloss finish (non-glare finish).	
State: ---	
Federal: 703.5.1	
9 - 4	Sign Category:
Relocate existing sign	\$125
Notes: "Smart Park Level 3" sign lettering is 37-7/8" above the ground (40" min).	
State: ---	
Federal: 703.5.6	
Install or modify permanent room sign	\$250
Notes: "Smart Park Level 3" sign has a high gloss finish (non-glare finish).	
State: ---	
Federal: 703.5.1	

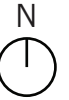
INTERNAL REVIEW DRAFT
NOT FOR PUBLIC DISTRIBUTION

Floor 3	
13 - 1 Elevator	Category:
Adjust or provide elevator signals and indicators	\$2,500
Notes: Hallway call buttons do not indicate when the call is registered and answered on Level 3.	
State: ---	
Federal: 407.2.1.5	

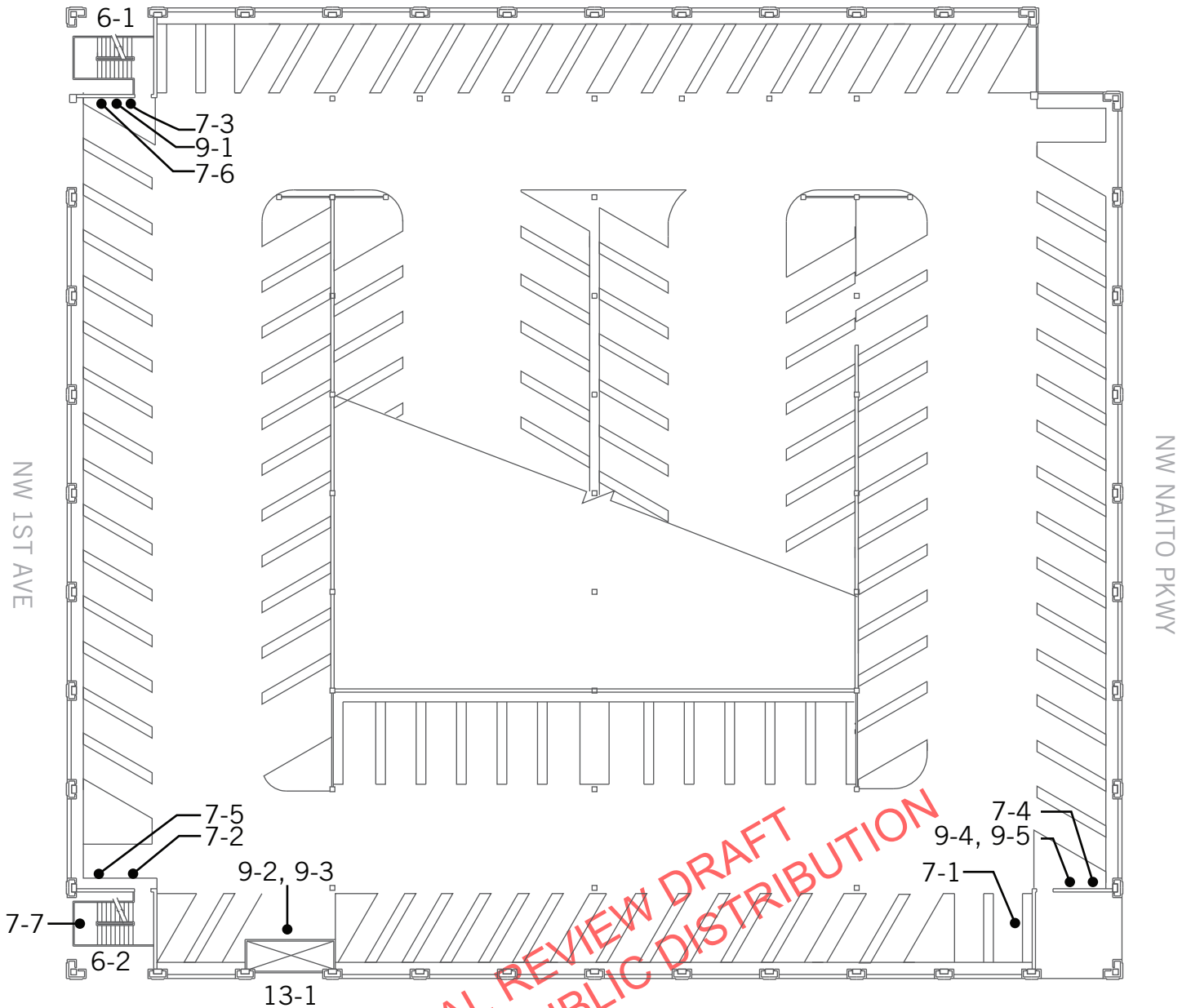
INTERNAL REVIEW DRAFT
NOT FOR PUBLIC DISTRIBUTION

BOT-09: NAITO & DAVIS PARKING GARAGE

33 NW DAVIS AVENUE, PORTLAND OR
FOURTH FLOOR



NW EVERETT ST



NW 1ST AVE

NW NAITO PKWY

**INTERNAL REVIEW DRAFT
NOT FOR PUBLIC DISTRIBUTION**

NW DAVIS ST

This page intentionally left blank.

**INTERNAL REVIEW DRAFT
NOT FOR PUBLIC DISTRIBUTION**

Floor 4		Category:
6 - 1	Stairway	
Replace stairs		\$3,900
Notes: Stairway 4th to 5th floor has 18 risers and two stair runs (9 and 9 risers). On the lower stair run the slopes of four treads range from 2.3% to 2.8%, and on the upper stair run one tread has a slope of 2.3% (2.0% max). Tread widths on the upper run range from 10-3/4" to 10-7/8" from riser to riser (11" min).		
State: ---		
Federal: 504.2, 504.4		
Install a handrail		\$500
Notes: A parallel extension is not provided at the top of the handrail on one side of the stairway (12" min) on the lower stair run, and no parallel extensions are provided at the top of the upper stair run. A sloped handrail extension is not provided at the bottom of the handrail on one side of the lower stair run (one tread-width min).		
State: ---		
Federal: 505.10.2, 505.10.3		
Raise or lower existing handrail		\$1,800
Notes: Handrail top surface is mounted 31" to 32" above the stair nosing (34" min to 38" max).		
State: ---		
Federal: 505.4		
Install or modify stairway signage		\$500
Notes: Floor level sign does not state the terminus of the exit enclosure or the story of and the direction to the exit discharge (signs provided at each floor landing in an exit enclosures connecting more than three stories). Sign is 15-1/4" square (18" by 12" min). Lettering identifying the stair enclosure is 1" to 1-3/8" (1-1/2" min). Sign is located in the intermediate landing of the stairway (sign located on each floor landing). A tactile and Braille EXIT sign is not provided.		
State: ---, 1022.8, 1022.8.1, 1110.2		
Federal: ---, 216.4.1		

INTERNAL REVIEW DRAFT
NOT FOR PUBLIC DISTRIBUTION

Floor 4

6 - 2 Stairway Category:

Replace stairs \$3,600

Notes: Stairway 4th to 5th floor has 18 risers and two stair runs (9 and 9 risers). On the lower stair run the slopes of three treads range from 2.6% to 3.7%, and on the upper stair run five treads have slopes from 2.6% to 4.7% (2.0% max). On the upper stair run, the bottom riser height is 5-1/2", while others are 6-1/4" to 6-1/2" in height (uniform heights req).

State: ---

Federal: 504.02, 504.2, 504.3, 504.4

Install a handrail \$250

Notes: A parallel extension is not provided at the top of the handrail on one side of the stairway (12" min) on both the upper and lower stair runs.

State: ---

Federal: 505.10.2

Raise or lower existing handrail \$1,800

Notes: Handrail top surface is mounted 31-1/4" to 32" above the stair nosing (34" min to 38" max).

State: ---

Federal: 505.4

Install or modify stairway signage \$500

Notes: Floor level sign does not state the terminus of the exit enclosure or the story of and the direction to the exit discharge (signs provided at each floor landing in an exit enclosures connecting more than three stories). Sign is 15-1/4" square (18" by 12" min). Lettering identifying the stair enclosure is 1" to 1-3/8" (1-1/2" min). Sign is located in the intermediate landing of the stairway (sign located on each floor landing). A tactile and Braille EXIT sign is not provided.

State: ---, 1022.8, 1022.8.1, 1110.2

Federal: ---, 216.4.1

7 - 1 Hazard Category:

Remove overhanging or protruding objects \$125

Notes: Fire extinguisher protrudes 6-1/2" from wall at 32-3/4" AFF (protrusion more than 4" must be mounted below 27" or above 80").

State: ---

Federal: 307.2

INTERNAL REVIEW DRAFT
NOT FOR PUBLIC DISTRIBUTION

Floor 4		
7 - 2	Hazard	Category:
Remove overhanging or protruding objects		\$125
Notes: Fire extinguisher protrudes 6-1/2" from wall at 32-1/4" AFF (protrusion more than 4" must be mounted below 27" or above 80").		
State: ---		
Federal: 307.2		
7 - 3	Hazard	Category:
Remove overhanging or protruding objects		\$125
Notes: Fire extinguisher protrudes 6-1/2" from wall at 30" AFF (protrusion more than 4" must be mounted below 27" or above 80").		
State: ---		
Federal: 307.2		
7 - 4	Hazard	Category:
Remove overhanging or protruding objects		\$125
Notes: Water valve protrudes 13" from wall at 35-1/2" AFF (protrusion more than 4" must be mounted below 27" or above 80").		
State: ---		
Federal: 307.2		
7 - 5	Hazard	Category:
Remove overhanging or protruding objects		\$125
Notes: Water valve protrudes 13" from wall at 45" AFF (protrusion more than 4" must be mounted below 27" or above 80").		
State: ---		
Federal: 307.2		
7 - 6	Hazard	Category:
Remove overhanging or protruding objects		\$125
Notes: Water valve protrudes 12" from wall at 45" AFF (protrusion more than 4" must be mounted below 27" or above 80").		
State: ---		
Federal: 307.2		
7 - 7	Hazard	Category:
Remove overhanging or protruding objects		\$250
Notes: Two utility boxes protrude 7-1/4" from wall at 52-3/4" and 53-1/4" AFF (protrusion more than 4" must be mounted below 27" or above 80").		
State: ---		
Federal: 307.2		

INTERNAL REVIEW DRAFT
NOT FOR PUBLIC DISTRIBUTION

Floor 4

9 - 1 Sign Category:

Relocate existing sign \$125

Notes: "Smart Park Level 4" sign lettering is 38" above the ground (40" min).

State: ---

Federal: 703.5.6

Install or modify permanent room sign \$250

Notes: "Smart Park Level 4" sign has a high gloss finish (non-glare finish).

State: ---

Federal: 703.5.1

9 - 2 Sign Category:

Relocate existing sign \$125

Notes: "Smart Park Level 4" sign lettering is 37-7/8" above the ground (40" min).

State: ---

Federal: 703.5.6

Install or modify permanent room sign \$250

Notes: "Smart Park Level 4" sign has a high gloss finish (non-glare finish).

State: ---

Federal: 703.5.1

9 - 3 Sign Category:

Relocate existing sign \$125

Notes: "Attention!" sign lettering is 38-7/8" above the ground (40" min).

State: ---

Federal: 703.5.6

9 - 4 Sign Category:

Relocate existing sign \$125

Notes: "Take Ticket with You" sign lettering is 27-1/2" above the ground (40" min).

State: ---

Federal: 703.5.6

9 - 5 Sign Category:

Relocate existing sign \$125

Notes: "Smart Park Level 4" sign lettering is 37-1/8" above the ground (40" min).

State: ---

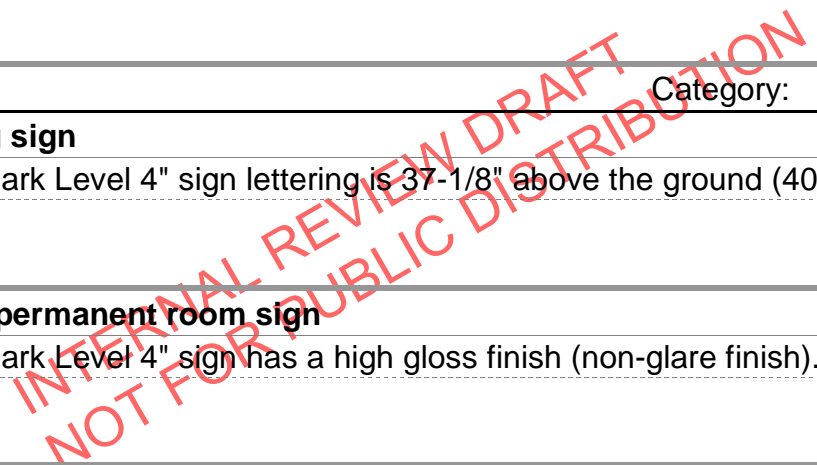
Federal: 703.5.6

Install or modify permanent room sign \$250

Notes: "Smart Park Level 4" sign has a high gloss finish (non-glare finish).

State: ---

Federal: 703.5.1



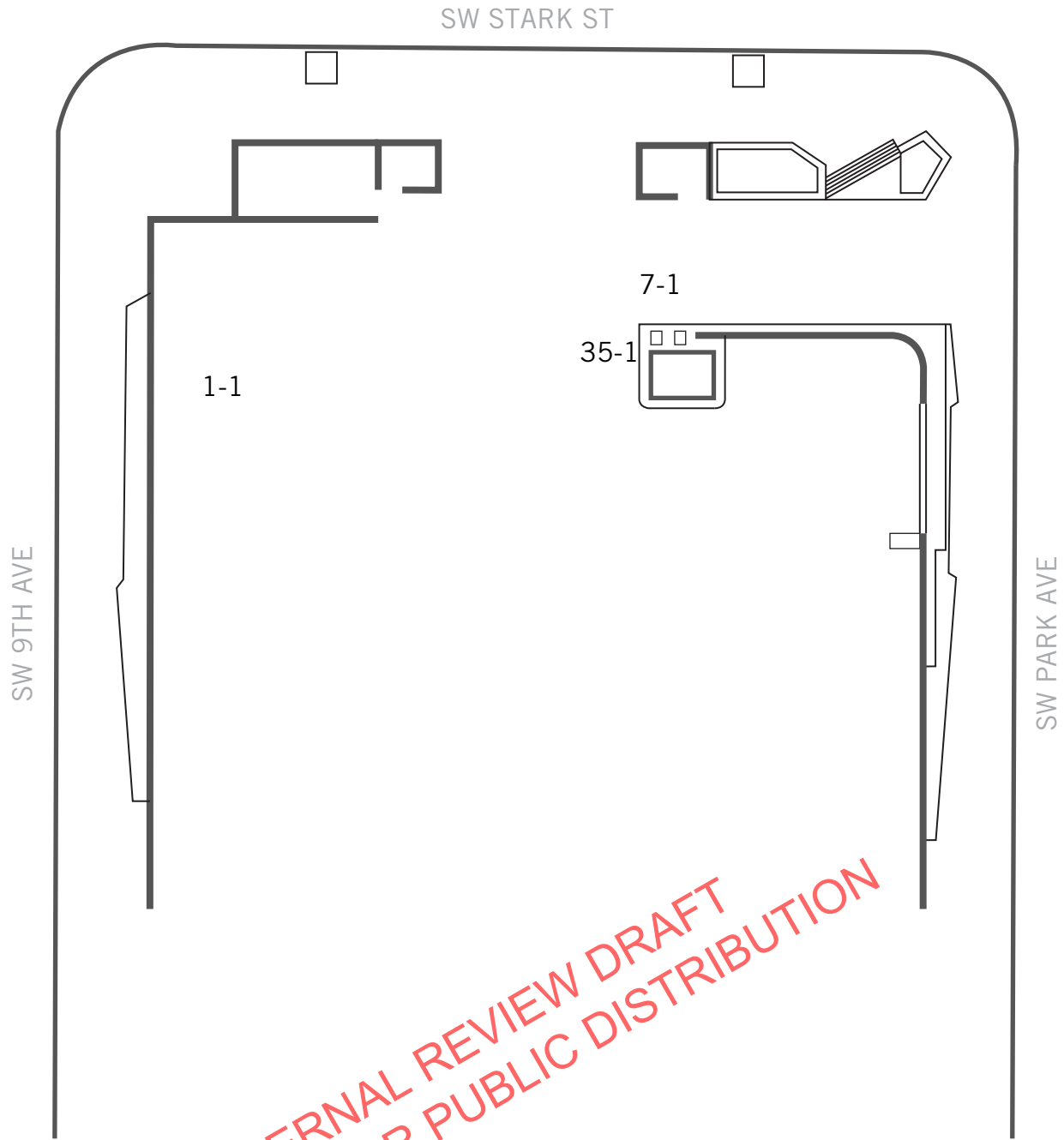
Floor 4	
13 - 1 Elevator	Category:
Increase or provide clear floor space	\$1,000
Notes: Slope of the clear floor space at the hall call buttons is 3.1% (2.0% max) on Level 4.	
State: ---	
Federal: 305.2, 407.2.1.3	
Adjust or provide elevator signals and indicators	\$2,500
Notes: Hallway call buttons do not indicate when the call is registered and answered on Level 4.	
State: ---	
Federal: 407.2.1.5	

INTERNAL REVIEW DRAFT
NOT FOR PUBLIC DISTRIBUTION

This page intentionally left blank.

**INTERNAL REVIEW DRAFT
NOT FOR PUBLIC DISTRIBUTION**

BOT-10: O'BRYANT SQUARE GARAGE
SW PARK AVENUE AND WASHINGTON STREET, PORTLAND OR



**INTERNAL REVIEW DRAFT
NOT FOR PUBLIC DISTRIBUTION**

This page intentionally left blank.

**INTERNAL REVIEW DRAFT
NOT FOR PUBLIC DISTRIBUTION**

1 - 1	Parking Area	Category:
Provide an accessible path of travel		\$3,120
Notes: There is not an accessible route to or from the accessible parking space. At the time of survey the designated accessible parking space was surrounded by cars on both sides and to its front, including a car parked in the access aisle. A passenger loading zone is not provided at this parking facility. Route from the designated accessible space to the ticket kiosk has a running slope up to 8.3% for 49 linear feet (5.0% max). Route from the ticket kiosk to SW Stark St is 26 linear feet with a running slope up to 12.3% (5.0% max). Route from ticket kiosk to SW Park Ave has a running slope up to 12.3% (5.0% max) and a cross slope up to 14.7% (2.0% max) for 29 linear feet and is obstructed by a grate. See Hazard 7-1.		
State: ---		
Federal: 502.3		
Provide or modify accessible spaces		\$8,085
Notes: Parking area has 90 spaces with one designated accessible space (4 spaces min for 76 to 100 spaces). There is no van accessible parking space (one van accessible parking min).		
State: 1106.7.1		
Federal: 208.2.4		
Provide adequate striping		\$30
Notes: Accessible parking space is 8' 7-1/2" wide (9' min).		
State: 1106.7.1		
Federal: 502.2		
Regrade parking space or access aisle		\$3,200
Notes: Slope of parking space and access aisle is up to 6.9% (2.0% max).		
State: 1106.7.1		
Federal: 502.4, 504.4		
Install reserved parking sign		\$375
Notes: Sign is 50-1/4" above the parking surface (60" min).		
State: 1106.71		
Federal: 502.6		
Remove overhanging or protruding objects		\$0
Notes: Vertical clearance measured at the front of the access aisle is 83-3/4" due to concrete support beam (98" min).		
State: -		
Federal: 502.5		

INTERNAL REVIEW DRAFT
NOT FOR PUBLIC DISTRIBUTION

BOT-10: O'Bryant Square Garage

7 - 1 Hazard		Category:
Install an accessible grate		\$500
Notes: Grate has two sections, one with openings 1-1/4" by 11-3/4", and another with openings 1" by 12" (1/2" max).		
State: ---		
Federal: 302.3		
35 - 1 Other		Category:
Increase or provide maneuvering or clear floor area		\$700
Notes: Clear floor space in front of the ticket kiosk a slope of 3.4% (2.0% max).		
State: ---		
Federal: 305.3, 305.5		

INTERNAL REVIEW DRAFT
NOT FOR PUBLIC DISTRIBUTION