



PORTLAND PARKS & RECREATION

Healthy Parks, Healthy Portland

New Local Access Parks

Funded by the 2006 Metro Bond Measure



Commissioner Dan Saltzman
Director Zari Santner

www.PortlandParks.org

2006 Metro Bond Measure

The 2006 Metro Bond Measure for \$227 million included funding for the following throughout the Metro region:

- Acquisition of regionally significant natural areas and trail corridors (\$168 million)
- Capital grant program (\$15 million)
- Local Share pass-through (\$44 million)



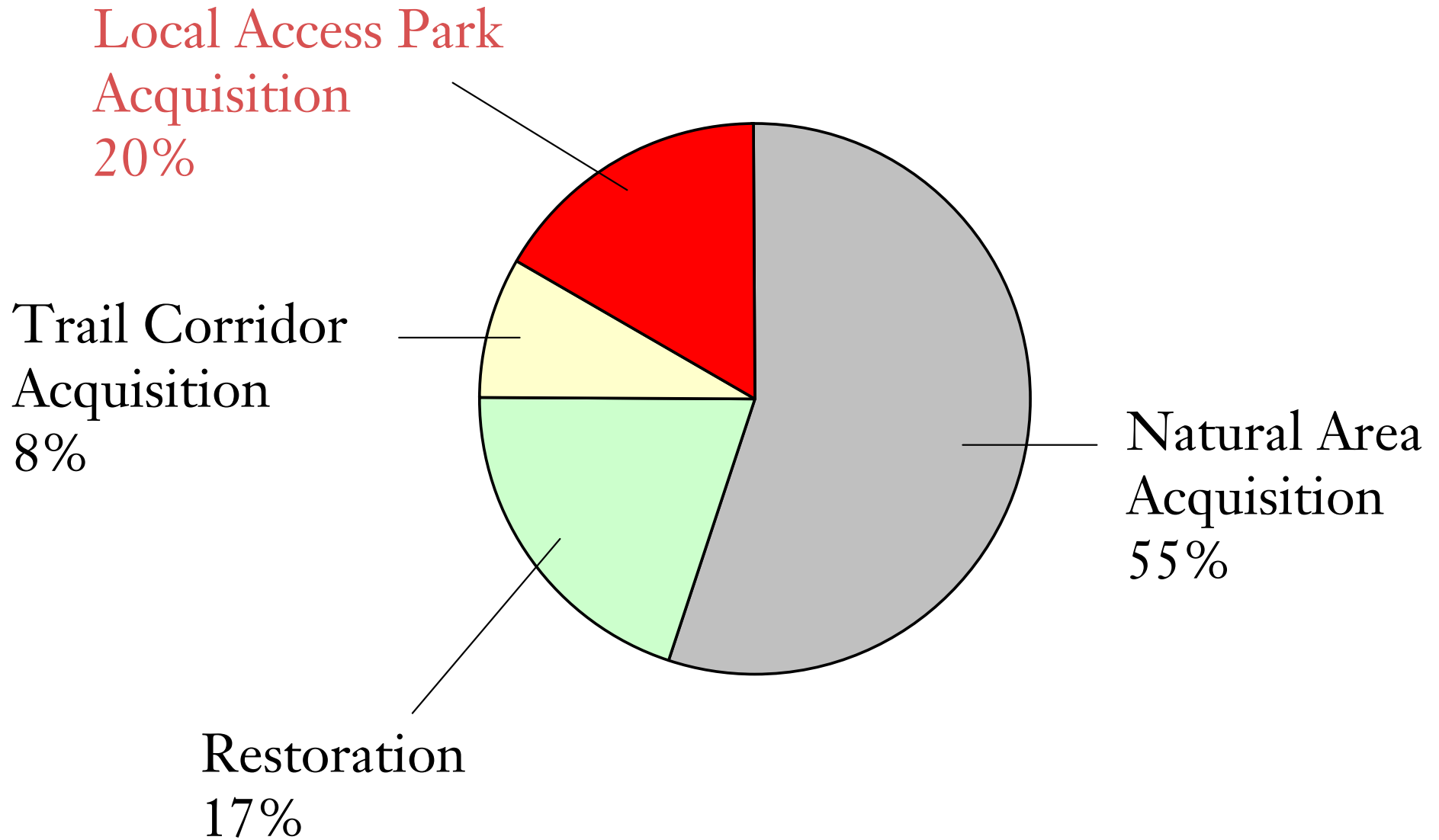
Local Share Projects

(Approximately \$15 Million for use in Portland)

- Natural Area Acquisition
- Trail Corridor Acquisition
- Restoration: Habitat and Soft-surface trails
- **Local Access Park Acquisition**



Allocation Guidelines



Local Access Park Acquisition



- Total of \$3 million for Portland acquisition of these types of park lands

- To acquire land for local access parks in park deficient areas



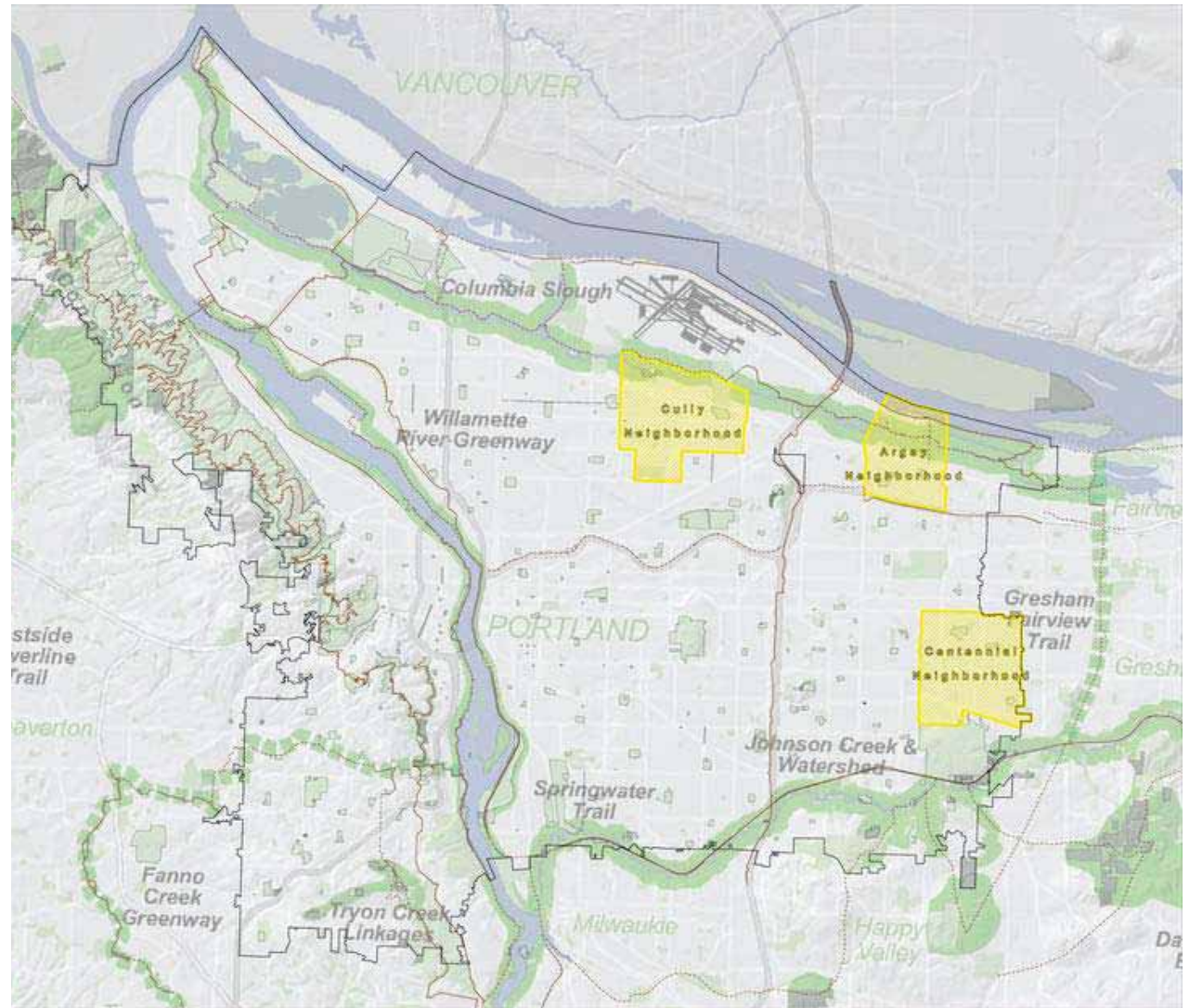
Land, Not Development

- The City has areas deficient in both park **land** and park **facilities** (developed parks).
- This funding source will be used for acquisition, not development of existing properties.



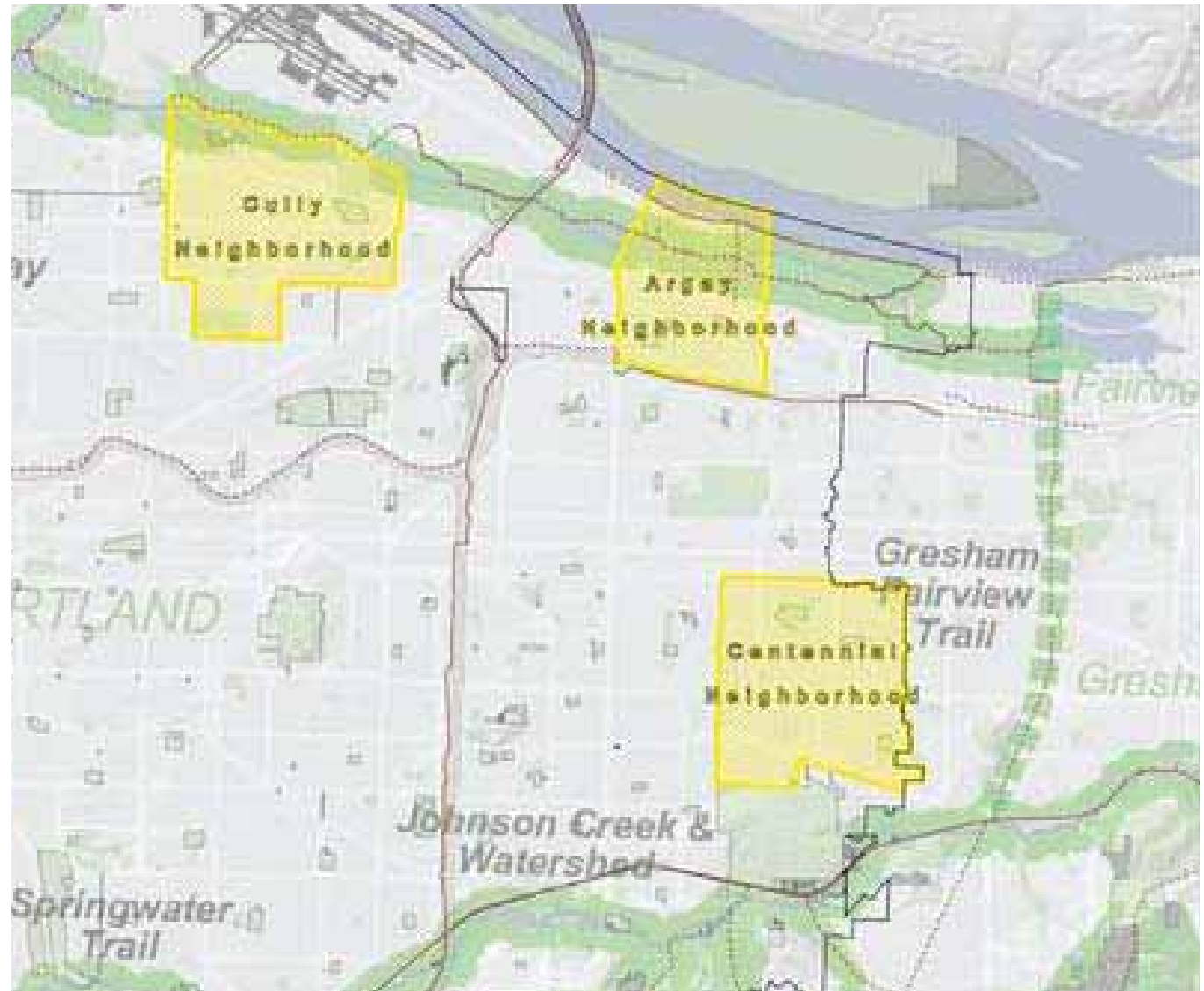
Where Are We Using These Funds ?

- At the time the Bond Measure was written three areas of the City were identified for use of these funds: Argay, Centennial and Cully



Where Are We Using These Funds ?

- At the time the Bond Measure was written three areas of the City were identified for use of these funds: Argay, Centennial and Cully



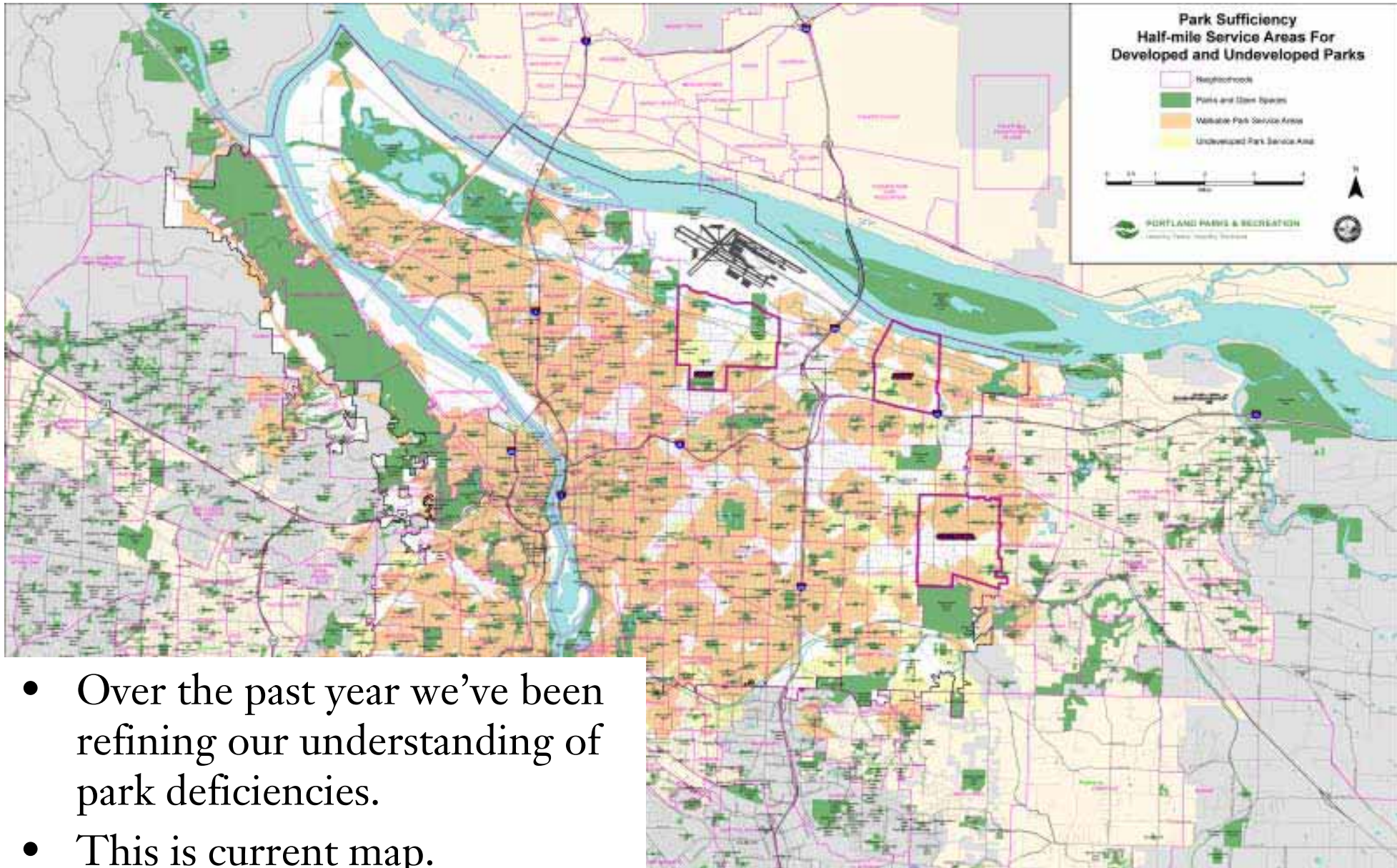
Why These Areas?

Combination of factors

- Park deficiencies of the neighborhoods
- Lower income brackets in the neighborhood
- Potential opportunities
- Limited alternative funding sources (i.e. System Development Charge and Urban Renewal funds)
- Future development or increased density of residents expected in the neighborhood



Refinement of Deficiency Maps



What Now?

- Portland Parks & Recreation is developing a set of selection criteria to help guide our search for appropriate properties
- We want public review and feedback on criteria
- Identify potential sites



Desirable Features and Considerations

- Within walking distance of residents
- Size: *5 acres or more*
- Street frontage
- Eyes on the park
- Usable configuration
- Utilities available
- Public transit nearby
- Connection to trail system



Fixed Criteria

Land for potential acquisition should:

- Serve park deficient areas
- Only be purchased from willing sellers
- Be large enough to be able to maintain efficiently and used flexibly



How Can You Help?

We have lots of questions:

- How important is it to you that we expand existing sites to improve their usefulness and function?
- How important is it to you that we acquire new sites in areas not served by recreational facilities?
- How important is it to you that we find new sites parks within walking distance of residential areas (current or projected)?
- How important is it to you that new sites be near public transit?
- Do you own or know of any particular properties that you would like to talk to us about?



What's on the walls tonight?

- Maps
 - Park deficiency maps
 - Detail of target areas with all public lands highlighted

Please mark the maps:

Where do you live?

Where do you recreate now?

Where would you like to
recreate?



- Comment station at front flipchart

Next steps after tonight:

- We will be looking for feedback through Wednesday, August 15th www.PortlandParks.org
- We will review feedback and amend the Criteria
- We will report back at Neighborhood Association meetings in early fall
- We will begin to research available land



Questions ?



PORTLAND PARKS & RECREATION

Healthy Parks. Healthy Portland

www.PortlandParks.org