

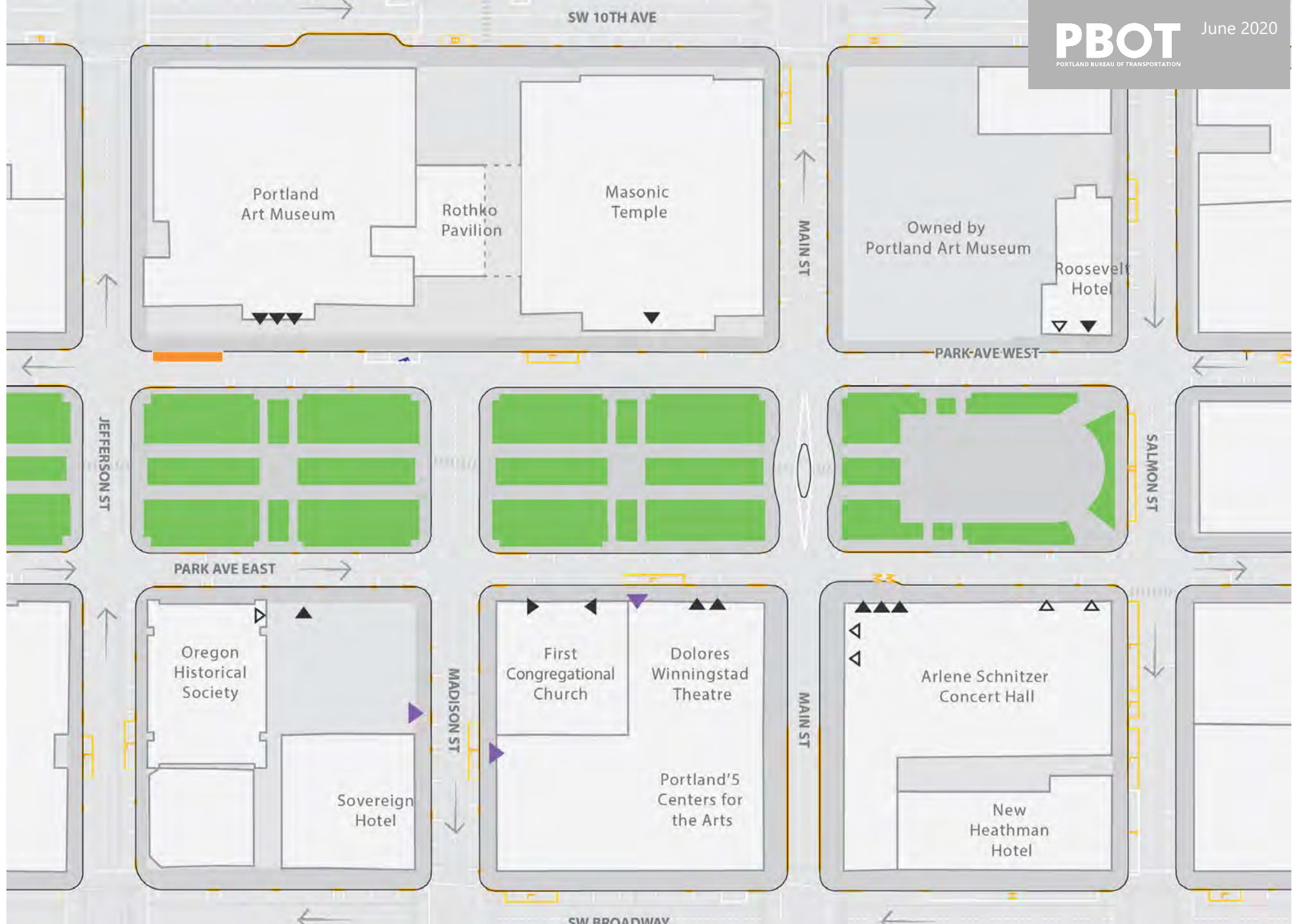
A Concept for a
Connected Cultural District

June 2, 2020 – **South Park Blocks Master Plan Community Advisory Committee**



1

Existing



2

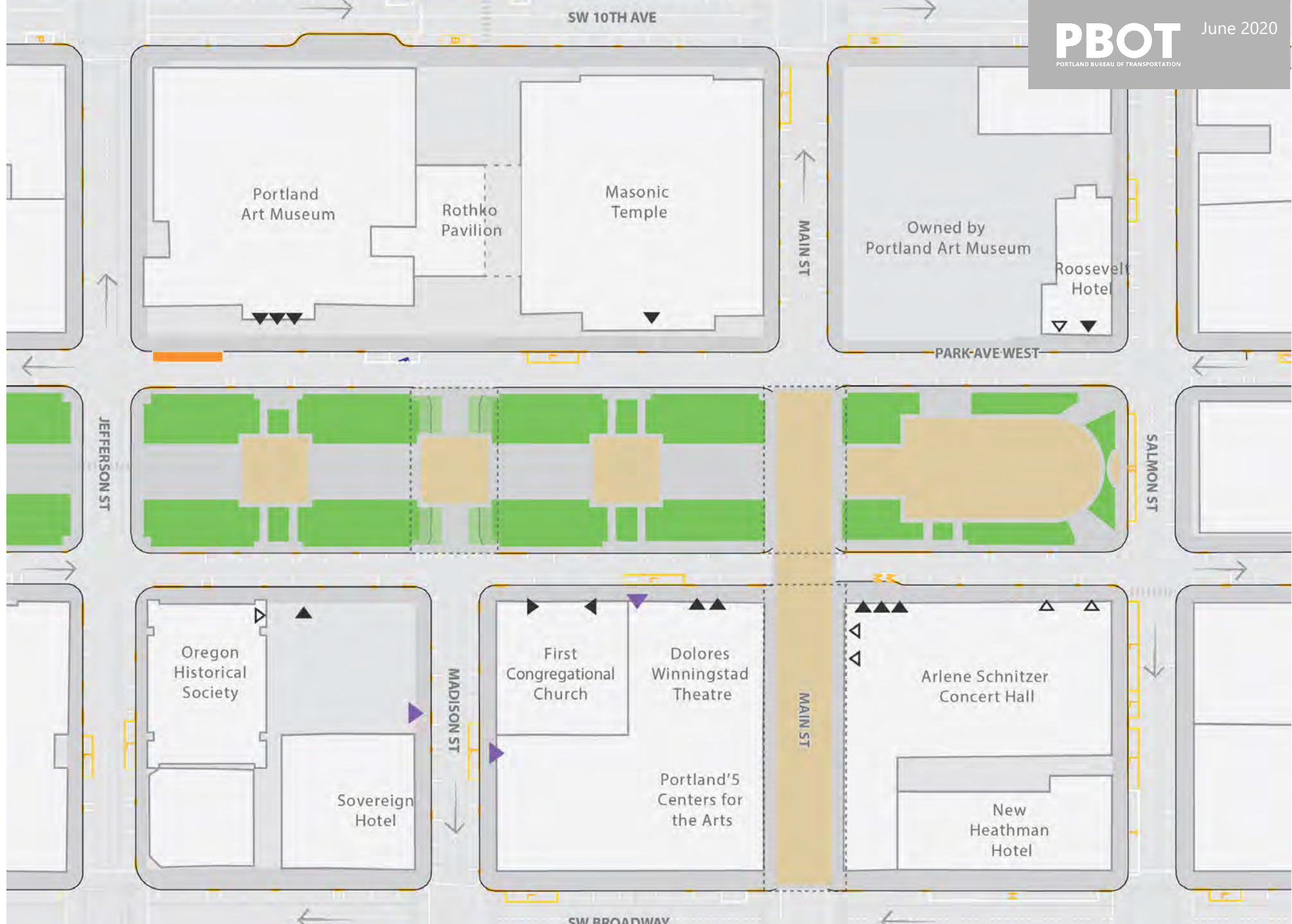
The South Park Blocks Master Plan

Park Blocks connections across:

Madison St
Main St

Pedestrianization:

Main St (Portland'5)



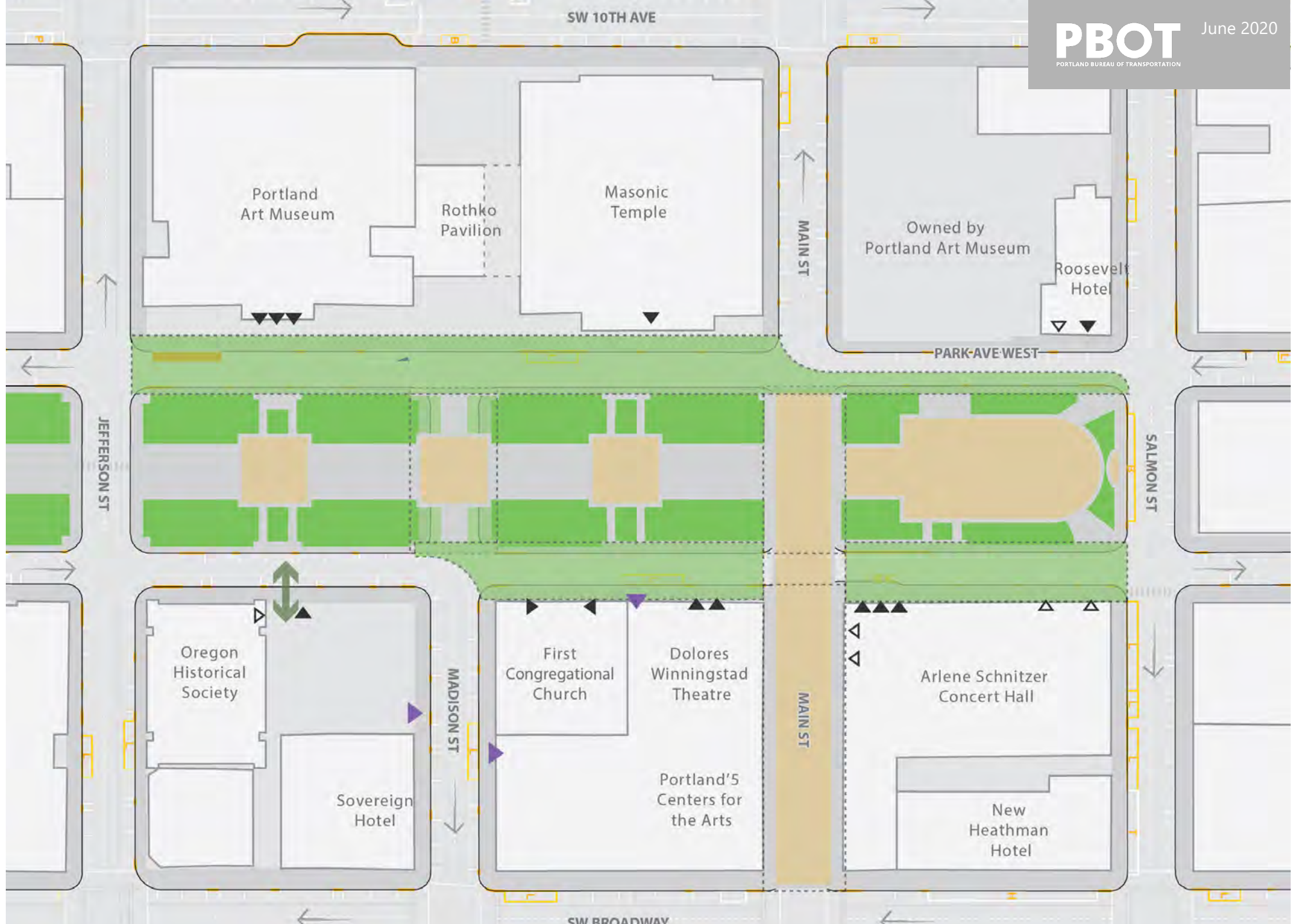
3

Expanded Park Blocks

Park Blocks connection across:

Park Avenue West
Park Avenue East

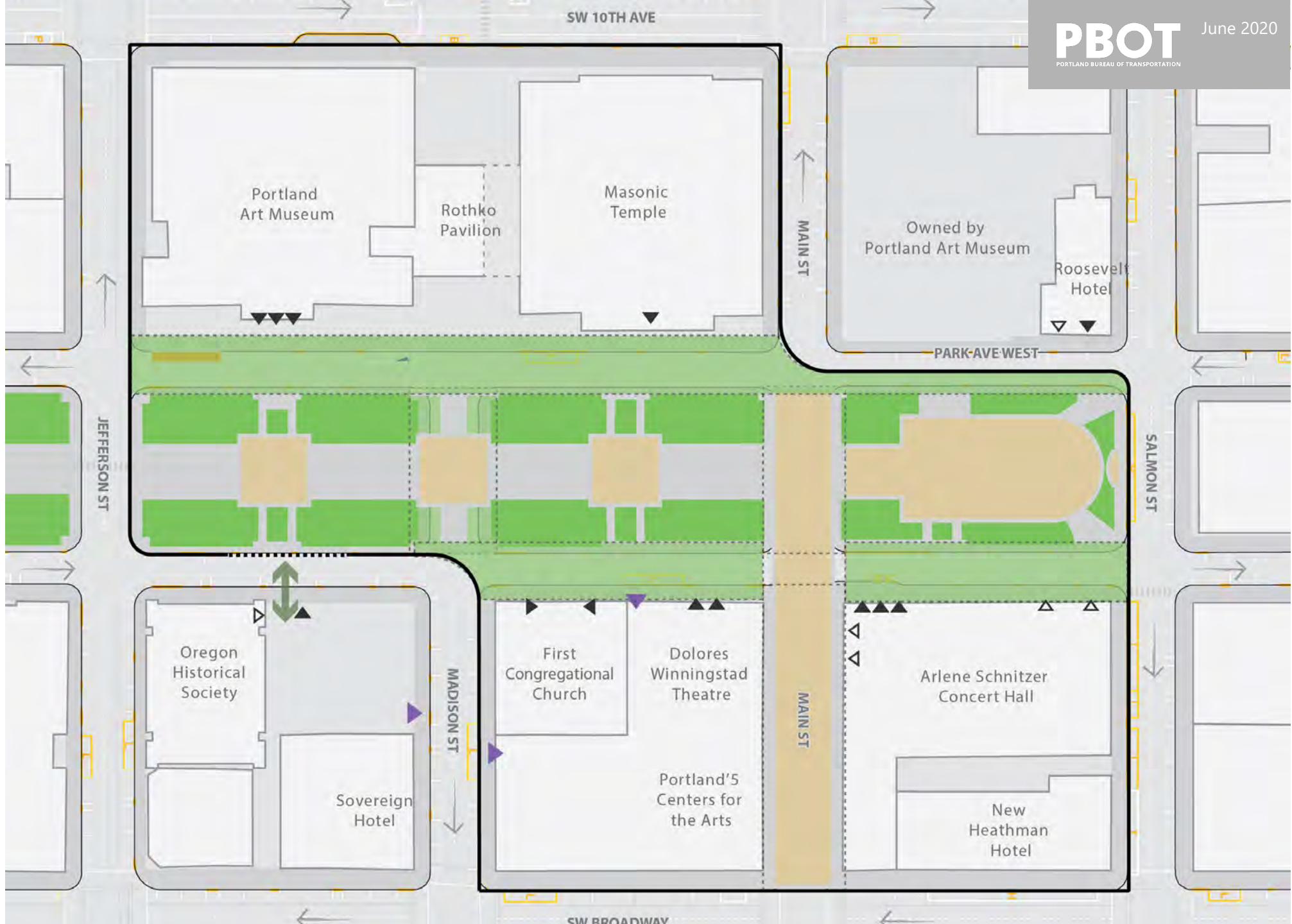
Connection to
Oregon Historical Society



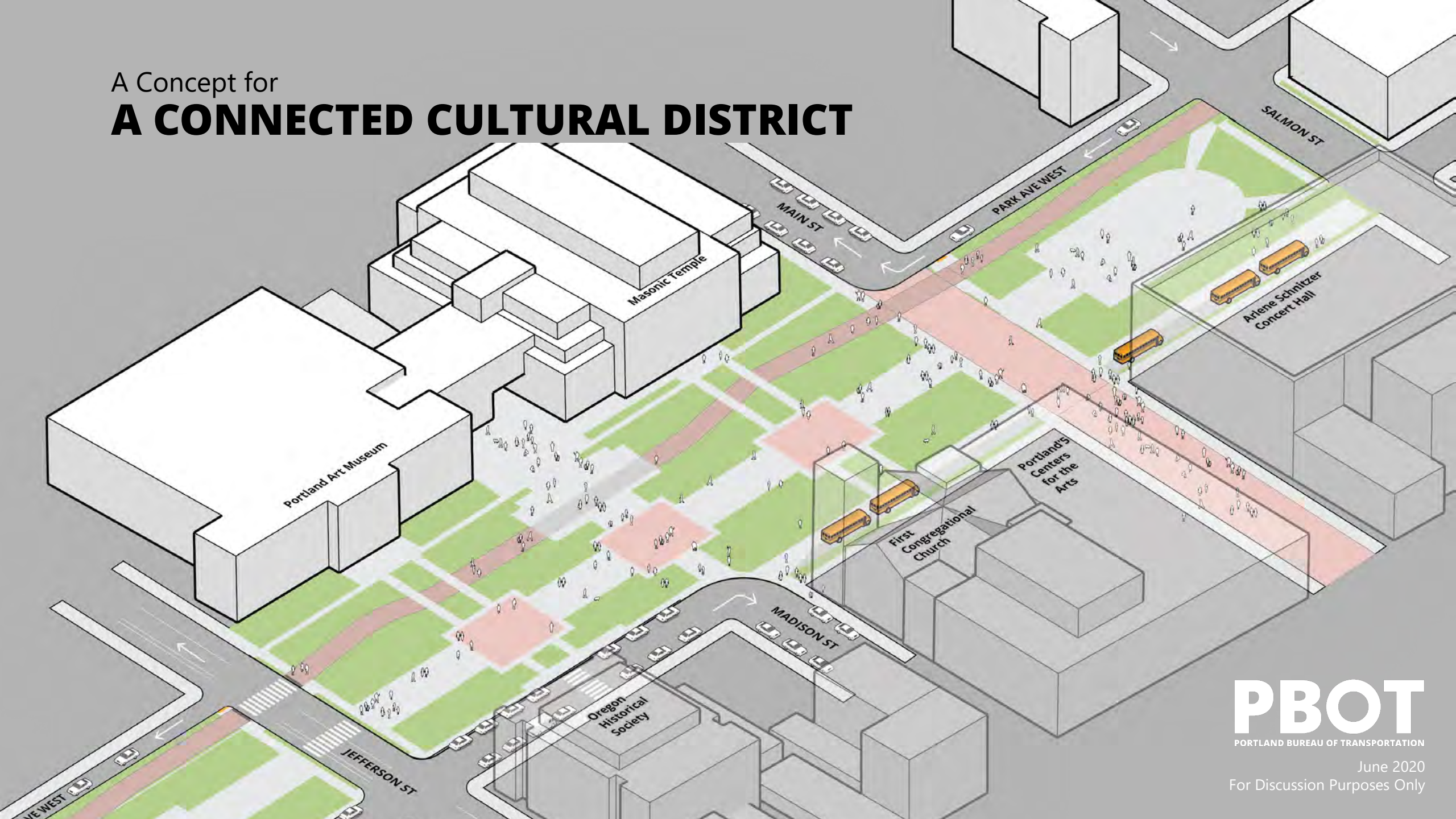
4

Connected Cultural District

A campus for community institutions

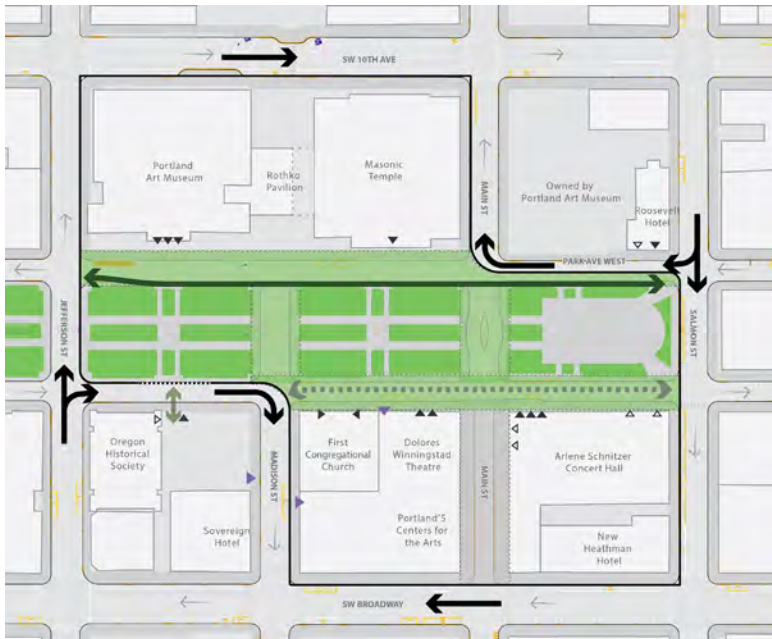


A Concept for
A CONNECTED CULTURAL DISTRICT



Key Considerations

Further discussion and exploration is needed with the community and stakeholders to address key considerations:



ACCESS & CIRCULATION



**SCHOOL BUSES,
ACCESSIBLE PARKING &
LOADING**



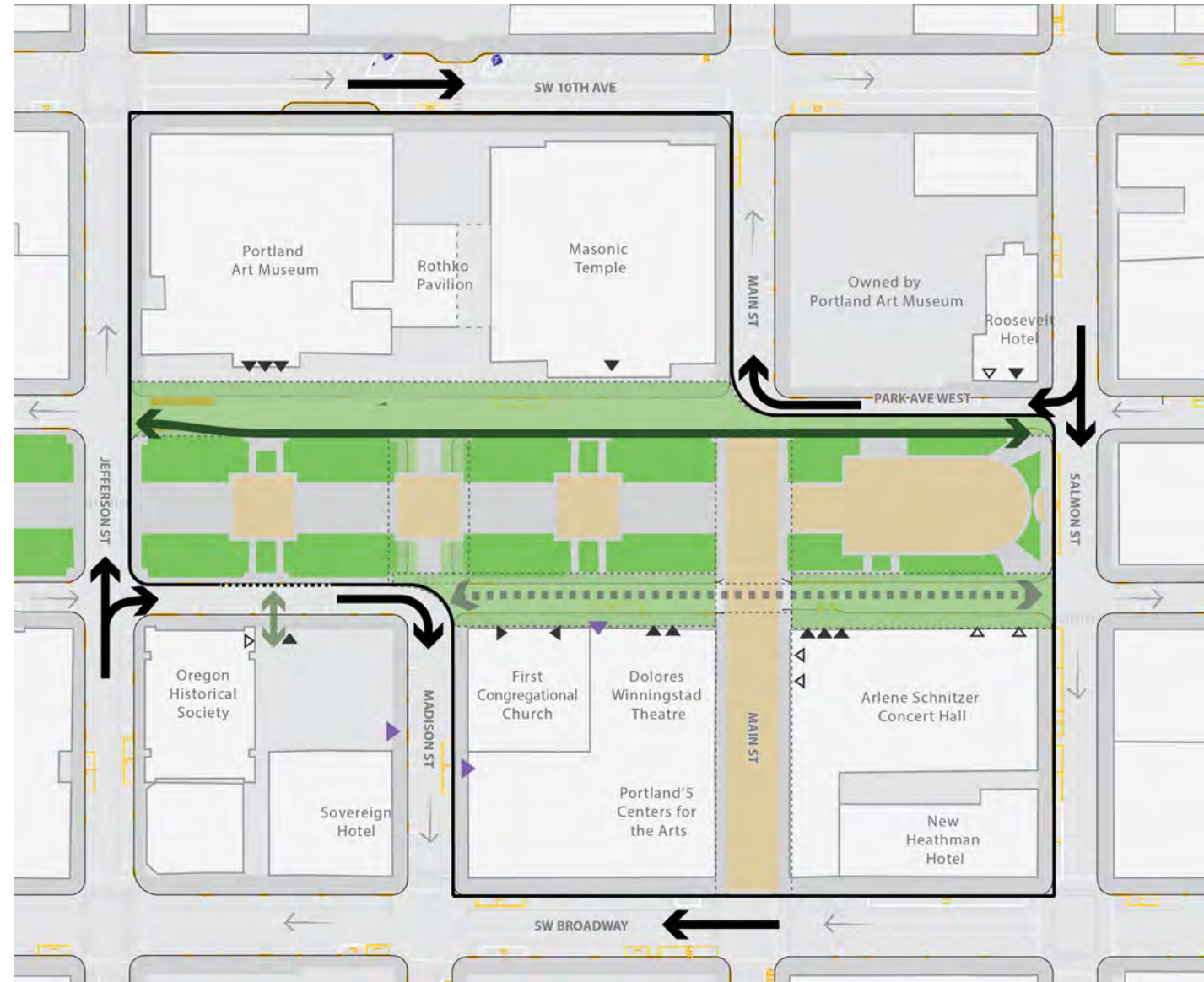
**COMMUNITY
MANAGEMENT &
ACTIVATION**

Access and Circulation

The Connected Cultural District would be directly served by all transportation modes.

Considerations:

- Accessible by major vehicle routes in all directions.
- Well served by transit.
- Green Loop path through the heart of the district.
- Preferential access preserved on Park Ave East for cultural institution needs.



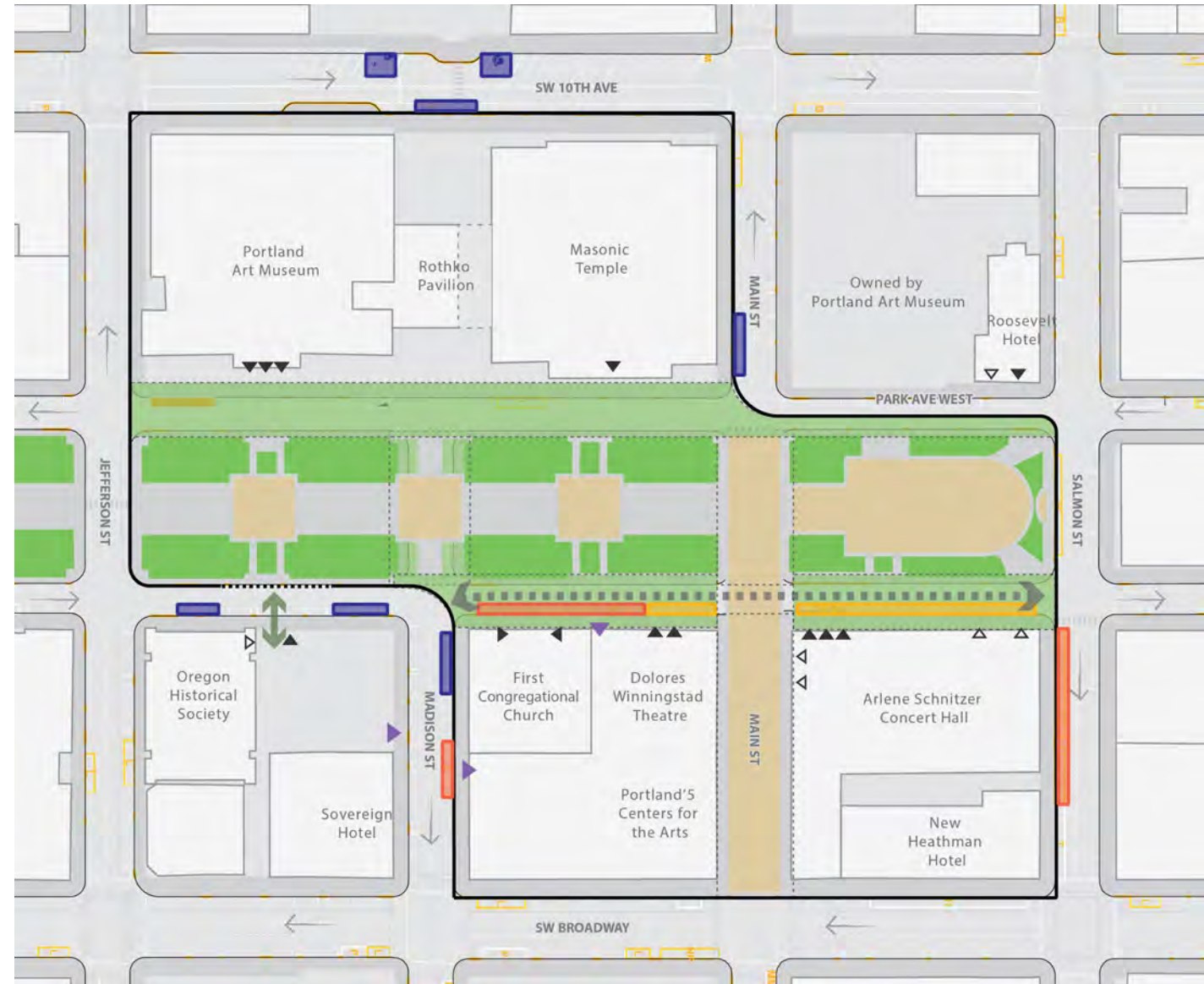
School Busses & Accessible Parking

Community institutions would maintain continued access for priority patrons and critical operations.

Considerations:

- School children pickup/drop off priority.
- Priority for accessible parking.
- Event loading, freight, and waste services.
- On-street parking supply/management.

Figure for illustration purposes only



Accessible Parking

School Bus

Loading

Community Management & Activation

New and expanded open spaces bring opportunities for more community events and community activation.

Considerations:

- Management structure, permitting, and maintenance of new public spaces.
- Coordination between cultural institutions, City bureaus to streamline and manage activation process.
- Coordination of loading and access and active uses.

Figure for illustration purposes only



* Enhanced public spaces

CAC Discussion

Should we **continue to explore** this concept?
Are there other **considerations** to address?
What new **opportunities** can this idea bring?

Nick Falbo

Senior Transportation Planner
Portland Bureau of Transportation
Nick.Falbo@portlandoregon.gov

PBOT
PORTLAND BUREAU OF TRANSPORTATION