

Communications

Priorities

In an emergency deployment, an Amateur Radio Operator (ARO) using VHF radio must accomplish three goals.

- Communicate with the Incident Team Leader.
- Have a means to contact the ECC.
- Relay messages between the Incident Team Leader and the ECC.

The ARO checks in with the Multnomah County Amateur Radio Emergency Service (ARES) Resource Net Controller on the Multnomah County Secondary Repeater MC-2 (see Table 1).

If no contact is possible on the Multnomah County ARES Resource Net via the Multnomah County Secondary Repeater (MC-2), AROs should attempt to make contact with a Multnomah County ARES Controller via the following channels in the order listed on the following frequencies table:

Ch/Name	Freq	Desc
64/MC2	147.280 +0.6 offset 167.9 tone	Multco Secondary Repeater
65/MC5	146.460	Multco Secondary Simplex
66/MC4	146.480	Multco Primary Simplex
68/MC6	147.580	PBEM NET Tac-1
69/MC7	147.540	PBEM NET Tac-2

After checking in with the Resource Net Controller the ARO switches over to the tactical net (MC 6, followed by MC 7 if there is no answer at MC 6).

Important References

Contact	Info
AC NET	TL: Marcel Rodriguez ██████████ Call Sign: KE7IYY
Collins View NET	Maryellen Read ██████████ KE7QBE Bob Fischer ██████████ KG7JKQ
Marshall Park NET	Jim Dockweiler K7JDK
Hillsdale NET	Lisa DeGraaf ██████████ Lynn Rossing ██████████ KE7EQT
SW Hills NET	Kelly Reece ██████████ John Reece ██████████ KF7YWM
PFB Station 10 Burlingame	451 SW Taylors Ferry Rd. Just west of SW Boones Ferry Rd.
PFB Station 18 Multnomah Village	8720 SW 30 th Ave. Just north of SW Barbur Blvd.
PFB Station 5 Hillsdale	1505 SW DeWitt St. Across from Hillsdale Library

Arnold Creek NET Operations Plan

Guiding Principles

- Rescuer Safety and Accountability are top priority.
- Chain of Command – NET members report to, and are accountable to, one NET member.
- Buddy System – always work in teams of no less than two.
- Do the Greatest Good for the Greatest Number of People.

Pre-Deployment Responsibilities

- Secure your own home and family.
- Check in with NET team members via cell/text or FRS/GMRS radio.
- Check on neighbors, do triage and turn off utilities, if appropriate.
- Meet at the Staging Area, ASAP.

Deployment

- No self-deployment (unless a major disaster where communications are disabled)
- Proceed to Staging Area.
- *En route* to the Staging Area, observe and record damage /injuries using the Damage Assessment Form (Form 1).
- Ask unaffiliated volunteers to accompany you to the Staging Area for processing.

Priorities

Stay Safe, plan for the long term, take care of yourself and your team

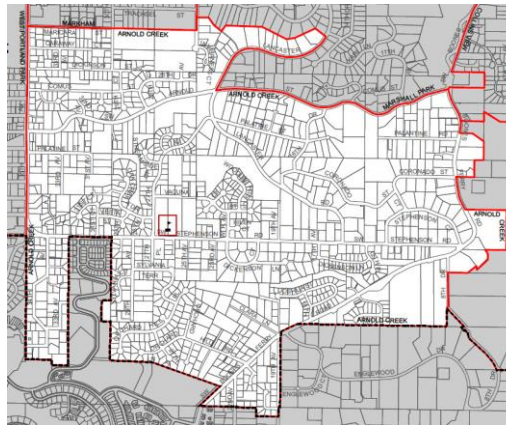
- The first NET member arriving at the Staging Area assumes incident command.
- When the Team Leader arrives, incident command is transferred to Team Leader.
- **Team Leader / Incident Commander** responsibilities include:
 - Ensuring incident safety
 - Establishing incident objectives
 - Delegating authority to others
 - Providing information to internal and external parties
 - Establishing and maintaining liaison with other responders
 - Taking direction from government agencies

Incident Commander assigns functional roles to NET members and establishes incident command structure, using Incident Command System (ICS), maintaining appropriate chain of command and span of control.

- **Operations Coordinator** directs and coordinates incident tactical operations.
- **Logistics Coordinator** assures there are adequate resources to meet incident objectives.
- **SUV Coordinator** processes, orients, and assigns SUVs, under oversight of a NET member.
- **NET members:**
 - Turn in Damage Assessment Forms (#1) at Staging Area.
 - Sign in using Intake Form (#2.a), and are given assignments using Check-In Form (#2.b).
 - Assignments are tracked using Assignment Tracking Log (#3).
 - Receive and review Assignment Briefing (#4) with Operations Coordinator prior to deployment.

The Arnold Creek Neighborhood

The Arnold Creek Neighborhood is in Portland's far southwest corner. It is roughly bordered between SW 35th Ave on the West, SW Stephenson St. on the South, SW Boones Ferry Rd. on the East and SW Arnold on the North.



The Arnold Creek Neighborhood is directly bordered by the West Portland Park (West), Markham (Northwest), Marshall Park (North) and Collins View (Northeast) neighborhoods, as well as Tryon State Park (West) and Lake Oswego's Mountain Park (South) neighborhood.

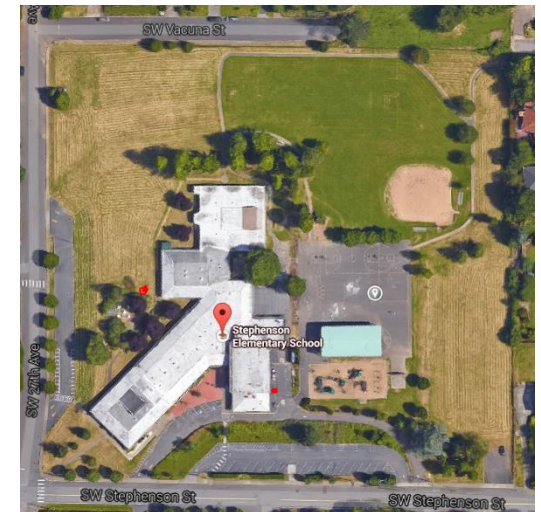
The neighborhood is nearly 100% single-family homes, with a significant number of rural/wooded lots and long flag lots.

Arnold Creek has just over 3,000 residents in approximately 1,200 residences spread over 718 acres.

AC NET Staging Area

Location:

The AC NET Staging Area is located at Stephenson Elementary School, 2627 SW Stephenson St. The primary meeting location is on the blacktop playground (East side of school), under the covered play area. The Secondary Staging Area is the Baseball Diamond.



Assets:

Located at the school are the area's Basic Earthquake Emergency Communications Node (BEECN) equipment box (Located outside the school on the West side of the school) and the AC NET equipment cache (Located in an external storage closet outside of the gym on the West side of the school). The cache includes administrative, medical and extrication equipment.