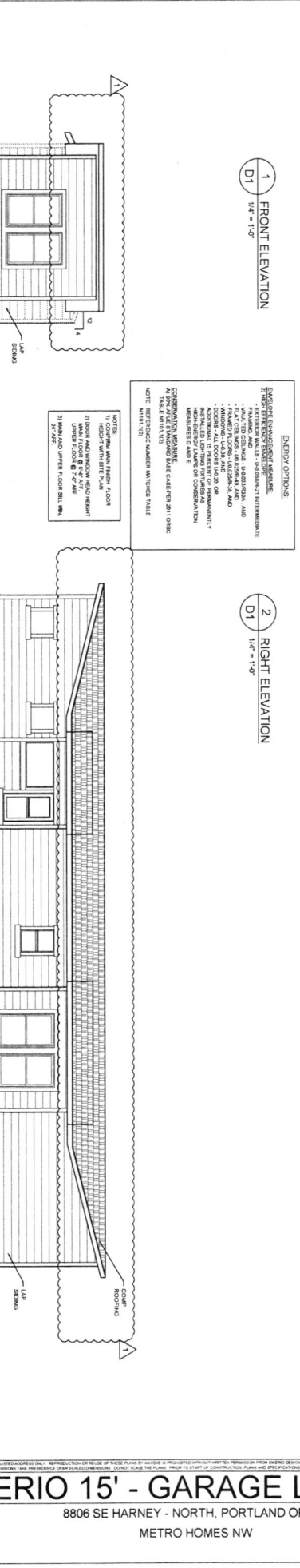
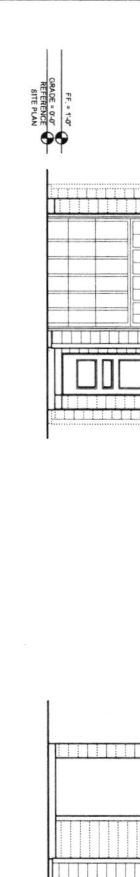


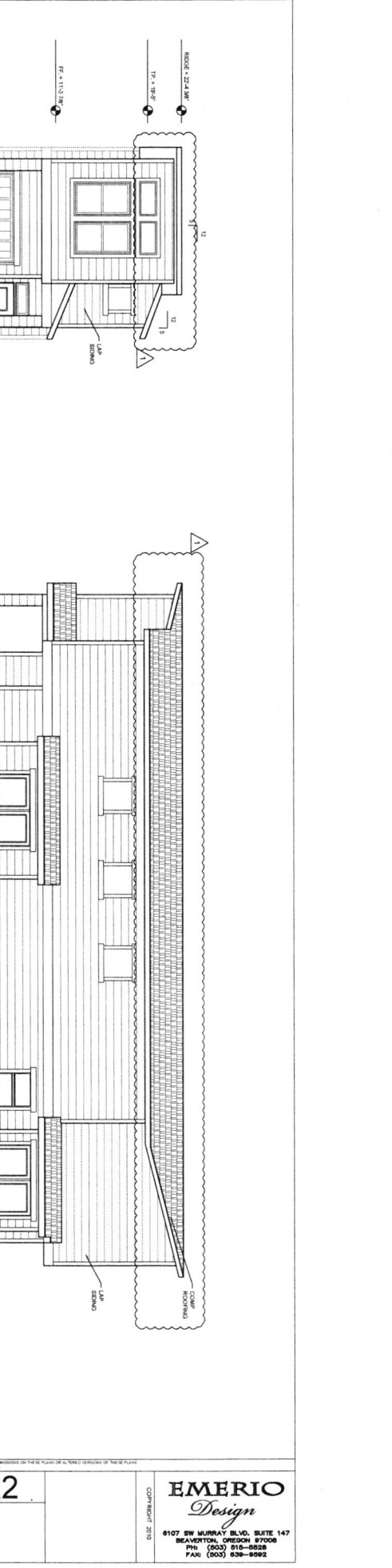
1 FRONT ELEVATION  
D1 1/4" = 1'-0"



2 RIGHT ELEVATION  
D1 1/4" = 1'-0"



3 REAR ELEVATION  
D1 1/4" = 1'-0"



4 LEFT ELEVATION  
D1 1/4" = 1'-0"

**ENERGY OPTIONS**

EMERIO ENERGY DESIGN PARTNER  
 - EXTERIOR WALLS - 1/2" X 6" X 2" INTERLOCKING RIGID POLYURETHANE INSULATION AND FIBERGLASS FIBER GLASS FIBERGLASS  
 - FINISHED FLOORS - INSULATION AND FIBERGLASS FIBERGLASS FIBERGLASS  
 - DOORS - ALL DOORS 1/2" OR MORE TYPICAL ENERGY EFFICIENT WINDOWS AS SPECIFIED BY MANUFACTURER'S DATA SHEET  
 - WINDOWS - ALL WINDOWS 1/2" OR MORE TYPICAL ENERGY EFFICIENT WINDOWS AS SPECIFIED BY MANUFACTURER'S DATA SHEET  
 - ROOFING - AS SPECIFIED BY MANUFACTURER'S DATA SHEET

COMMENTS: REFER TO SHEET D11 FOR ENERGY EFFICIENT WINDOW SCHEDULE.  
 ALL WINDOW SCHEDULES SHALL BE APPROVED BY LOCAL BUILDING DEPARTMENT.  
 A. PERMITTING INFORMATION  
 B. PERMITTING INFORMATION  
 C. PERMITTING INFORMATION  
 D. PERMITTING INFORMATION

**NOTE:** FINISHED FIRST FLOOR HEIGHT WITH SITE PLAN. 2ND FLOOR AND WINDOW HEAD HEIGHT UPPER FLOOR 8' 2" AFF. 3" MIN. AND UPPER FLOOR BELL-WALL 2" AFF.

REVISIONS

SYM	REVISION	DATE	BY	CHK
1	REVISION	06/08/15		
2	PERMIT REVISION	11/24/15		
3				
4				
5				
6				
7				
8				
9				
10				

**EMERIO 15' - GARAGE LEFT- R2**  
 8806 SE HARNEY - NORTH, PORTLAND OR.  
 METRO HOMES NW

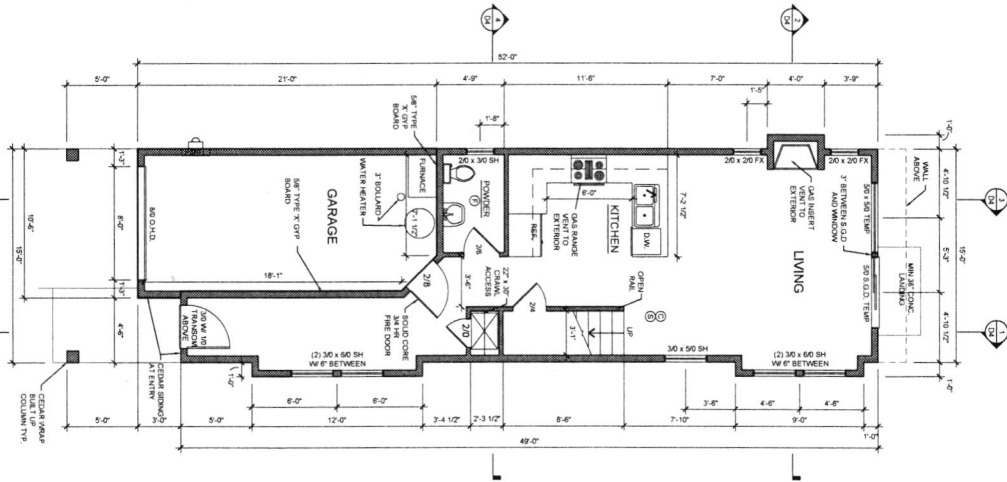
**EMERIO Design**  
 6107 SW MURRAY BLVD, SUITE 147  
 BEAVERTON, OREGON 97008  
 PH. (503) 515-3030  
 FAX (503) 536-8962

DATE: 06/08/15  
 JOB NO: 2004017

DATE: 06/08/15  
 REVISION: PERMIT REVISION  
 DATE: 11/24/15

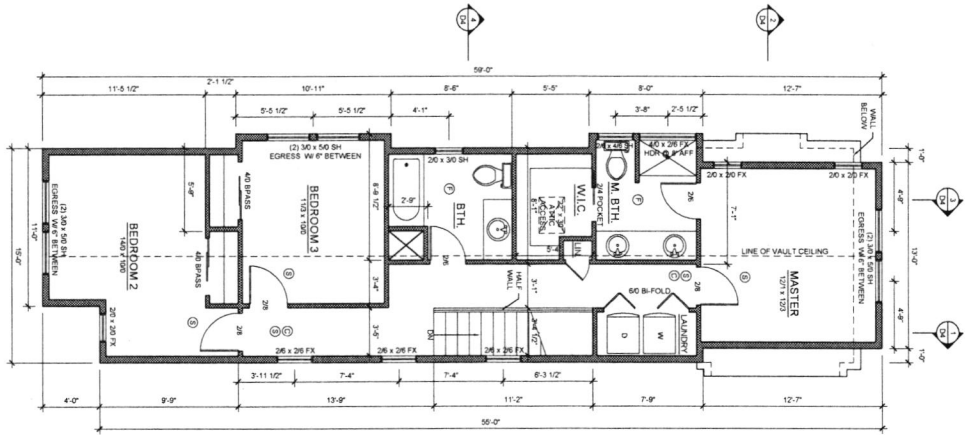
D1

1 MAIN FLOOR PLAN  
1/4" = 1'-0"



- LEGEND
- SMOKE DETECTOR
  - CARBON MONOXIDE ALARM
  - EXHAUST FAN/W/ TIMER ON DEMAND/WHI

2 UPPER FLOOR PLAN  
1/4" = 1'-0"



BUILDING AREA:	582 SQ. FT.
MAIN FLOOR:	823 SQ. FT.
UPPER FLOOR:	209 SQ. FT.
GARAGE:	209 SQ. FT.
TOTAL (including deck):	1,405 SQ. FT.

DATE	REVISION
04/09/15	200
05/09/15	200
06/09/15	200
07/09/15	200
08/09/15	200
09/09/15	200
10/09/15	200
11/09/15	200
12/09/15	200
01/10/16	200
02/10/16	200
03/10/16	200
04/10/16	200
05/10/16	200
06/10/16	200
07/10/16	200
08/10/16	200
09/10/16	200
10/10/16	200
11/10/16	200
12/10/16	200

# EMERIO 15' - GARAGE LEFT- R2

8806 SE HARNEY - NORTH, PORTLAND OR.  
METRO HOMES NW

**EMERIO**  
*Design*

6107 SW MURRAY BLVD, SUITE 147  
BEAVERTON, OREGON 97008  
PH: (503) 615-5528  
FAX: (503) 639-9562

D2