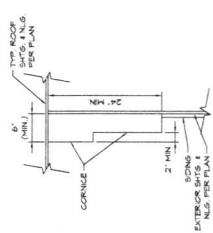




ALL DIMENSIONS ARE SHOWN AND APPROXIMATE. ACTUAL SITE CONDITIONS MAY VARY. THE CONTRACTOR SHALL VERIFY ALL DIMENSIONS AND CONDITIONS PRIOR TO CONSTRUCTION. THE CONTRACTOR SHALL BE RESPONSIBLE FOR OBTAINING ALL NECESSARY PERMITS AND APPROVALS FROM THE APPLICABLE AGENCIES. THE CONTRACTOR SHALL BE RESPONSIBLE FOR OBTAINING ALL NECESSARY PERMITS AND APPROVALS FROM THE APPLICABLE AGENCIES. THE CONTRACTOR SHALL BE RESPONSIBLE FOR OBTAINING ALL NECESSARY PERMITS AND APPROVALS FROM THE APPLICABLE AGENCIES.



CORNICHE GEOMETRY DETAIL
 SCALE: 1" = 1'-0"

NOTE: ALL CORNERED FRAMES MUST COMPLY WITH THE FOLLOWING TABLE

ITEM	DESCRIPTION	MIN. VALUE
1	MIN. INSULATION R-VALUE	R-5
2	MIN. INSULATION R-VALUE	R-5
3	MIN. INSULATION R-VALUE	R-5
4	MIN. INSULATION R-VALUE	R-5
5	MIN. INSULATION R-VALUE	R-5
6	MIN. INSULATION R-VALUE	R-5
7	MIN. INSULATION R-VALUE	R-5
8	MIN. INSULATION R-VALUE	R-5
9	MIN. INSULATION R-VALUE	R-5
10	MIN. INSULATION R-VALUE	R-5

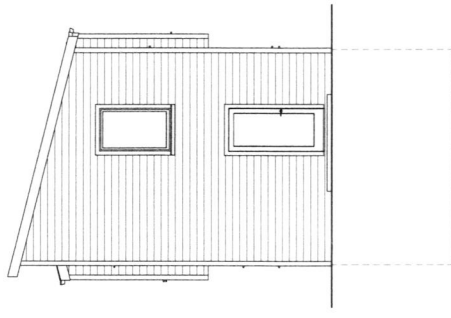
IN ADDITION TO TABLE 101.1, CHECK AN ADDITIONAL CORNER FRAME FROM THE FOLLOWING TABLE

(CHECK ONE BOX)

- 1. HIGH EFFICIENCY WALL SYSTEMS: (CHECK ONE BOX) (SEE TABLE 101.1)
- 2. HIGH EFFICIENCY WALL SYSTEMS: (CHECK ONE BOX) (SEE TABLE 101.1)
- 3. HIGH EFFICIENCY WALL SYSTEMS: (CHECK ONE BOX) (SEE TABLE 101.1)
- 4. HIGH EFFICIENCY WALL SYSTEMS: (CHECK ONE BOX) (SEE TABLE 101.1)
- 5. HIGH EFFICIENCY WALL SYSTEMS: (CHECK ONE BOX) (SEE TABLE 101.1)
- 6. HIGH EFFICIENCY WALL SYSTEMS: (CHECK ONE BOX) (SEE TABLE 101.1)
- 7. HIGH EFFICIENCY WALL SYSTEMS: (CHECK ONE BOX) (SEE TABLE 101.1)
- 8. HIGH EFFICIENCY WALL SYSTEMS: (CHECK ONE BOX) (SEE TABLE 101.1)
- 9. HIGH EFFICIENCY WALL SYSTEMS: (CHECK ONE BOX) (SEE TABLE 101.1)
- 10. HIGH EFFICIENCY WALL SYSTEMS: (CHECK ONE BOX) (SEE TABLE 101.1)

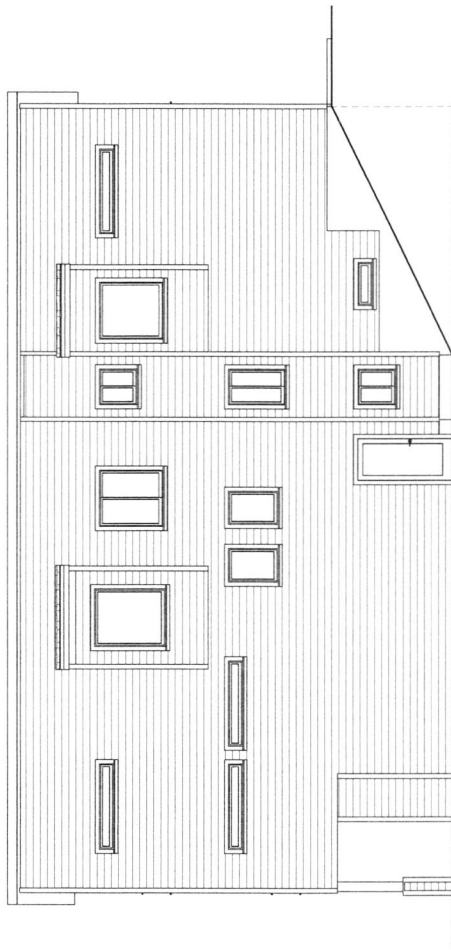
(CHECK ONE BOX)

- 1. HIGH EFFICIENCY WALL SYSTEMS: (CHECK ONE BOX) (SEE TABLE 101.1)
- 2. HIGH EFFICIENCY WALL SYSTEMS: (CHECK ONE BOX) (SEE TABLE 101.1)
- 3. HIGH EFFICIENCY WALL SYSTEMS: (CHECK ONE BOX) (SEE TABLE 101.1)
- 4. HIGH EFFICIENCY WALL SYSTEMS: (CHECK ONE BOX) (SEE TABLE 101.1)
- 5. HIGH EFFICIENCY WALL SYSTEMS: (CHECK ONE BOX) (SEE TABLE 101.1)
- 6. HIGH EFFICIENCY WALL SYSTEMS: (CHECK ONE BOX) (SEE TABLE 101.1)
- 7. HIGH EFFICIENCY WALL SYSTEMS: (CHECK ONE BOX) (SEE TABLE 101.1)
- 8. HIGH EFFICIENCY WALL SYSTEMS: (CHECK ONE BOX) (SEE TABLE 101.1)
- 9. HIGH EFFICIENCY WALL SYSTEMS: (CHECK ONE BOX) (SEE TABLE 101.1)
- 10. HIGH EFFICIENCY WALL SYSTEMS: (CHECK ONE BOX) (SEE TABLE 101.1)

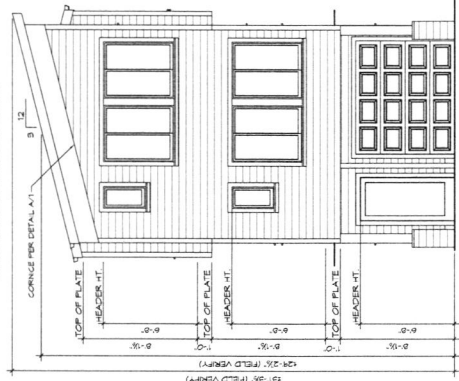


REAR ELEVATION
 SCALE: 1/4" = 1'-0"

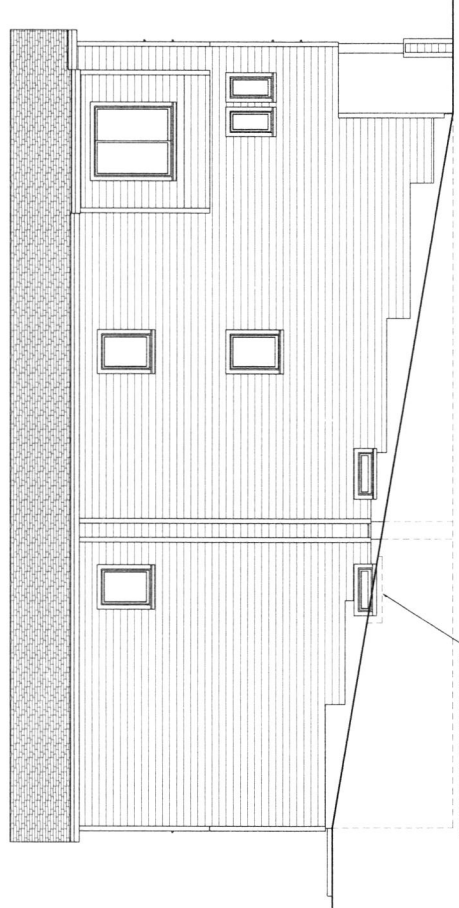
TOTAL FACADE AREA = 488 SF
 MIN. WINDOW/DOOR REQUIRED = 64 SF
 MIN. WINDOW/DOOR PROVIDED = 104 SF



RIGHT ELEVATION
 SCALE: 1/4" = 1'-0"



FRONT ELEVATION
 SCALE: 1/4" = 1'-0"



LEFT ELEVATION
 SCALE: 1/4" = 1'-0"

MINIMUM PER WINDOW (IF REQUIRED)