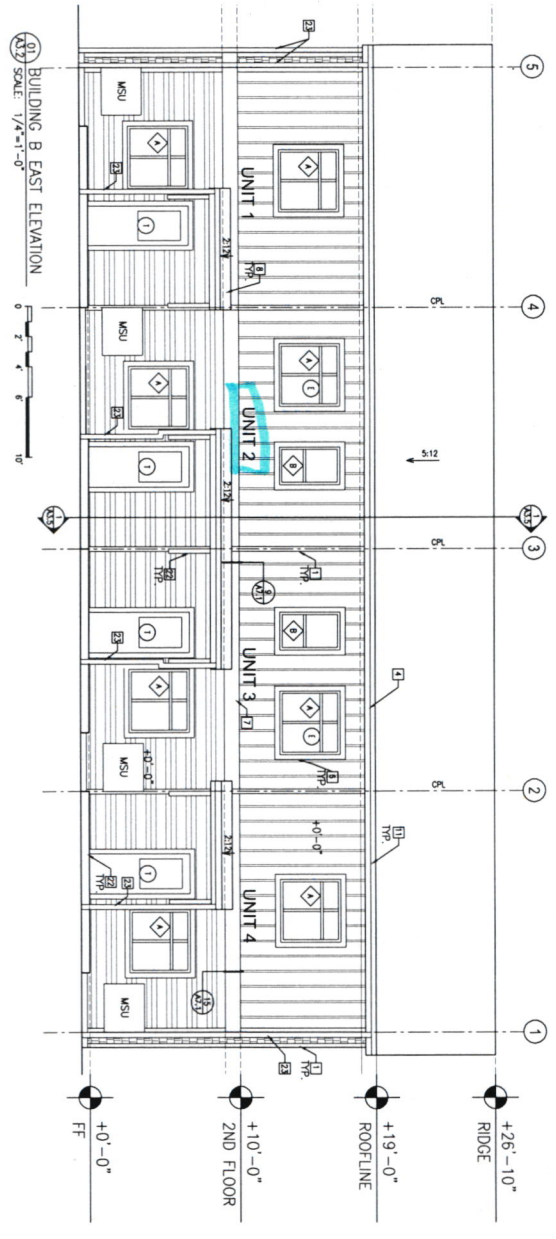


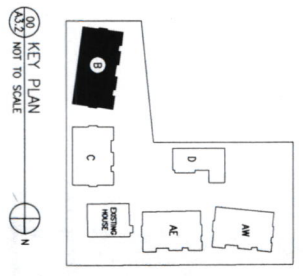
20 BUILDING B EAST ELEVATION  
SCALE: 1/4"=1'-0"



21 BUILDING B WEST ELEVATION  
SCALE: 1/4"=1'-0"

- ELEVATION KEY NOTES**
- 2x4 W/ TRIM, PAINTED
  - BRICK
  - 6x6 W/ POST, PAINTED
  - 2x8 W/ FLOOR, PAINTED
  - 2x8 WINDOW TRIM
  - 2x4 WINDOW TRIM
  - 2x12 W/ BELLY BAND TRIM, PAINTED
  - HEAVY TRIMMER FLOOR COVER WITH COMPOSITE SHINGLE ROOFING
  - NOT USED
  - NOT USED
  - W/EN OUTLET, PAINTED
  - WOOD TRUSS, PAINTED
  - 2x8 W/ FLOOR, PAINTED
  - 2x10 W/ FLOOR, PAINTED
  - 6x4 W/ POST, PAINTED
  - 2x8 W/ BELLY BAND TRIM, PAINTED
  - DOORCASE
  - EXTERIOR ELEMENT SET DENAL 18/4/2
  - COMPOSITE SHINGLE SHAMPOUR ROOF SEE DENAL 20/4/1
  - POST, PAINTED
  - ROOF FINISH BRACKET
  - CONCRETE PUNCH SLAB
  - W/EN DOWNPOUT, PAINTED
  - AGGRESSIVE SLAGGER SHEL CONCREST
  - MINIMUM OF 4" REIN WITH A MINIMUM
  - REINFORCING W/EN OF 7" SET SITE PLAN FOR
  - CONCRETE FINISHES

- ELEVATION LEGEND**
- WOODEN COMPOSITE LANDING WITH 4"X7" W/EN, PAINTED
  - BOARD AND BATTY SINGE WITH BATTENS AT 12" O.C., PAINTED
  - COMPOSITE SHINGLE WITH HEAVY TRIMMER FLOOR FINISH
  - COMPOSITE SHINGLE ROOFING
  - W/EN SHUT OUTSIDE UNIT
  - W/EN TRIM AND INTERIOR W/EN TRIMMING
  - EXTERIOR ELEMENT SET DENAL 18/4/2
  - TEMPERED GLASS
  - EXTERIOR WINDOW
  - COMMON PROJECT LINE
  - MSU
  - MSU



22 KEY PLAN  
SCALE: NOT TO SCALE



**COMMUNITecture**  
ARCHITECTURE/PLANNING/DESIGN

840 SE Main Street | Portland, OR 97214  
T: 503.238.7253 | www.committecture.com

**REGISTERED ARCHITECT**  
STATE OF OREGON  
TOMAS K. LOCKMAN  
#688

**MASON STREET COHOUSING**  
5836 AND 5900 NE MASON ST.  
PORTLAND, OR 97218

DATE: 05.03.16  
SHT: CHECKSHEET  
REVISIONS: 08.25.16

**A3.3**

BUILDING B  
EAST & WEST  
ELEVATIONS